

Dynamics of cytotoxic T cell subsets during immunotherapy predicts outcome in acute myeloid leukemia

Frida Ewald Sander¹, Anna Rydström¹, Elin Bernson¹, Roberta Kiffin¹, Rebecca Riise¹, Johan Aurelius^{1,2}, Harald Anderson³, Mats Brune², Robin Foà⁴, Kristoffer Hellstrand¹, Fredrik B. Thorén¹ and Anna Martner¹

¹ TIMM Laboratory, Sahlgrenska Cancer Center, University of Gothenburg, Gothenburg, Sweden

² Department of Hematology, University of Gothenburg, Gothenburg, Sweden

³ Department of Cancer Epidemiology, University of Lund, Lund, Sweden

⁴ Department of Cellular Biotechnologies and Hematology, Sapienza University of Rome, Rome, Italy

Correspondence to: Anna Martner, **email:** anna.martner@gu.se

Keywords: acute myeloid leukemia, immunotherapy, cytotoxic T cells, antigen-specific T cells, Immunology and Microbiology Section, Immune response, Immunity

Received: December 22, 2015

Accepted: January 26, 2016

Published: February 05, 2016

ABSTRACT

Preventing relapse after chemotherapy remains a challenge in acute myeloid leukemia (AML). Eighty-four non-transplanted AML patients in first complete remission received relapse-preventive immunotherapy with histamine dihydrochloride and low-dose interleukin-2 in an international phase IV trial (ClinicalTrials.gov; NCT01347996). Blood samples were drawn during cycles of immunotherapy and analyzed for CD8⁺ (cytotoxic) T cell phenotypes in blood. During the first cycle of therapy, a re-distribution of cytotoxic T cells was observed comprising a reduction of T effector memory cells and a concomitant increase of T effector cells. The dynamics of T cell subtypes during immunotherapy prognosticated relapse and survival, in particular among older patients and remained significantly predictive of clinical outcome after correction for potential confounders. Presence of CD8⁺ T cells with specificity for leukemia-associated antigens identified patients with low relapse risk. Our results point to novel aspects of T cell-mediated immunosurveillance in AML and provide conceivable biomarkers in relapse-preventive immunotherapy.

INTRODUCTION

Patients diagnosed with acute myeloid leukemia (AML) receive induction chemotherapy aiming at attaining the microscopic disappearance of leukemic cells and the re-appearance of normal hematopoiesis (complete remission, CR). The post-remission phase includes consolidation chemotherapy with the goal of eradicating undetectable leukemic cells. However, relapse in CR is common, in particular in older patients (> 60 years old), and significantly explains why a minority of adult AML patients achieve long-term leukemia-free survival (LFS) [1, 2].

Relapse in the post-consolidation phase of AML in CR likely results from the expansion of leukemic cells that have escaped the initial rounds of chemotherapy. While details regarding the role of cellular immunity for the elimination of residual leukemic cells remain

largely unknown, experience from the use of allogeneic transplantation for relapse prevention in AML strongly implies a role for grafted T cells [2-4]. In non-transplanted AML patients, the role of T cells for the surveillance of leukemic cells is less well documented, but the results of smaller studies suggest that prognosis is favorably impacted by the emergence of anti-leukemic T cells in bone marrow or blood [5] and by the presence of mRNAs encoding leukemia-associated antigens [6]. These results have inspired the design of immunotherapies aiming at achieving T cell-mediated elimination of AML cells e.g. by the adoptive transfer of engineered T cells [NCT01864902, 7], by promoting autologous T cell function by vaccination [8], by use of bispecific antibodies linking T cells to leukemic cells [NCT02152956, 9], by countering mechanisms of T cell suppression [NCT02532231, 9], and by the administration of T cell-activating cytokines [NCT01885897, 10].

CD8⁺ (cytotoxic) T cells differentiate from antigen-inexperienced naïve T cells (T_N) into central memory (T_{CM}), effector memory (T_{EM}) and effector (T_{eff}) cell populations [11]. These T cell subsets are distinguished by phenotype and by their localization: naïve T cells (CD45RA⁺CCR7⁺) and T_{CM} (CD45RO⁺CCR7⁺) are localized mainly in secondary lymphoid organs whereas T_{EM} (CD45RO⁺CCR7⁻) and T_{eff} (CD45RA⁺CCR7⁻) cells circulate through non-lymphoid tissues [12]. Studies using adoptive cell transfer for therapeutic purposes imply that T cells at early stages of differentiation are superiorly efficacious in cancer immunotherapy as these cells are capable of self-renewal and may continuously provide new T_{eff} cells [13]. For the present study, we assessed the distribution of CD8⁺ T cell subsets in the peripheral blood of AML patients undergoing immunotherapy for relapse prevention with histamine dihydrochloride and low-dose interleukin-2 (HDC/IL-2). Our results suggest that the dynamics of T cell phenotypes during immunotherapy heralds remission maintenance and survival in AML.

RESULTS

Dynamics of cytotoxic T cell subsets during immunotherapy

AML patients in first CR received 10 consecutive 3-week cycles of HDC/IL-2 in the post-consolidation phase, as outlined in Figure 1. Peripheral blood collected before and after the first and the third cycles of immunotherapy was analyzed for CD8⁺ T cell content and phenotype. During the treatment cycles, HDC/IL-2 did not alter the absolute counts of CD8⁺ T cells in blood (Figure

2A). Also, the CD8⁺ T cell counts (above or below the median) before or after therapy did not impact on relapse risk (data not shown).

When comparing the distribution of CD8⁺ T_N, T_{CM}, T_{EM} and T_{eff} cells before and after the first treatment cycle, non-relapsing patients showed a distinct reduction of the fraction of T_{EM} cells along with an induction of T_{eff} cells (Figure 2). At onset of therapy, patients with a high percentage (above the median) of T_{EM} cells showed a slightly higher likelihood of LFS, while no significant differences in relapse risk were found for patients with a high or low percentage (by the median) of T_N, T_{CM}, or T_{eff} cells (Figure S1). Patients experiencing a reduction of the frequency of T_{EM} cells or an induction of T_{eff} cells during cycle 1 showed significantly improved LFS and/or OS (Figure 3C-3D with results of multivariate analyses shown in Table 1). Also, induction of the frequency of naïve T cells during the first treatment cycle significantly predicted LFS and OS (Figure 3A, Table 1). The distribution of T_{CM} cells was seemingly unaltered during immunotherapy (Figure 2D) and did not influence relapse risk (Figure 3B). The distribution of T cell subsets was not significantly altered during treatment cycle 3 (data not shown).

Stimulation of CD8⁺ T cells with antigen has been proposed to drive differentiation from T_N → T_{CM} → T_{EM} → T_{eff} cells [14, 15]. We thus speculated that T_{eff} cells were induced from T_{EM} cells during the first treatment cycle of HDC/IL-2. Indeed, a correlation was observed between an induction of T_{eff} and a reduction of T_{EM} during cycle 1 (Figure S2). Eighteen out of 44 analyzable patients (41 %) showed a memory to effector T cell transition, defined as a reduction of CD8⁺ T_{EM} cells with a concomitant increase in CD8⁺ T_{eff} cells. These patients showed improved LFS (HR 0.19, p < 0.001) and OS (HR 0.13, p = 0.002; Figure 3E, Table 1).

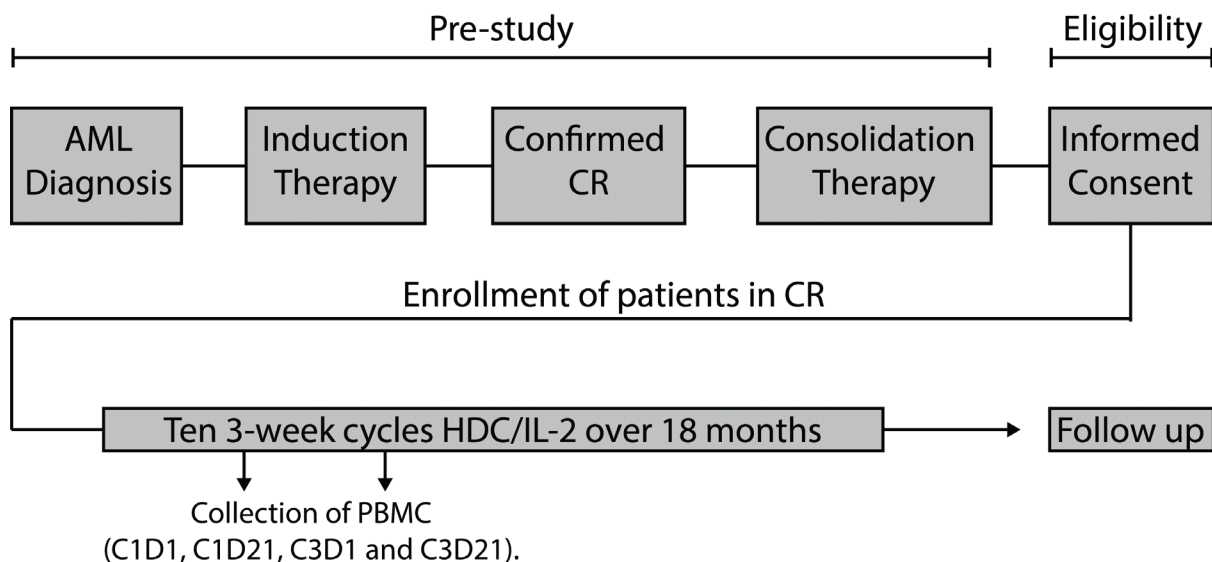


Figure 1: Overview of the Re:Mission phase IV trial. Eligible AML patients in first complete remission (CR) received ten 3-week cycles of HDC/IL-2 over 18 months. Peripheral blood mononuclear cells (PBMC) were isolated from blood collected before and after cycles 1 and 3. Patients were followed-up for 6 months after completing the last treatment cycle.

Table 1: Univariate and multivariate Cox regression analyses of the impact of aspects of CD8⁺ T cell phenotype on LFS and OS.

| Cox regression analysis | Univariate | | | Multivariate* | | |
|-----------------------------------|------------|----------------|---------|---------------|----------------|---------|
| | HR | Conf. Interval | p-value | HR | Conf. Interval | p-value |
| All patients (n=44) | | | | | | |
| Induction T _N vs LFS | 0.45 | 0.20-0.98 | 0.04 | 0.47 | 0.21-1.06 | 0.07 |
| Induction T _N vs OS | 0.29 | 0.10-0.82 | 0.02 | 0.29 | 0.10-0.85 | 0.02 |
| Induction T _{CM} vs LFS | 1.08 | 0.50-2.36 | 0.84 | 1.46 | 0.64-3.32 | 0.37 |
| Induction T _{CM} vs OS | 1.43 | 0.52-3.93 | 0.49 | 2.65 | 0.91-7.76 | 0.08 |
| Reduction T _{EM} vs LFS | 0.26 | 0.12-0.60 | 0.001 | 0.26 | 0.11-0.60 | 0.002 |
| Reduction T _{EM} vs OS | 0.24 | 0.08-0.69 | 0.009 | 0.23 | 0.08-0.70 | 0.01 |
| Induction T _{EFF} vs LFS | 0.50 | 0.23-1.09 | 0.08 | 0.46 | 0.20-1.03 | 0.06 |
| Induction T _{EFF} vs OS | 0.35 | 0.12-0.99 | 0.048 | 0.27 | 0.09-0.80 | 0.02 |
| Transition vs LFS ** | 0.19 | 0.07-0.50 | 0.001 | 0.17 | 0.06-0.47 | 0.001 |
| Transition vs OS ** | 0.13 | 0.03-0.59 | 0.008 | 0.12 | 0.02-0.54 | 0.006 |
| Patients ≥60yo (n=27) | | | | | | |
| Induction T _N vs LFS | 0.25 | 0.88-0.68 | 0.007 | 0.20 | 0.07-0.61 | 0.005 |
| Induction T _N vs OS | 0.17 | 0.04-0.67 | 0.01 | 0.13 | 0.03-0.59 | 0.008 |
| Induction T _{CM} vs LFS | 1.39 | 0.50-3.85 | 0.53 | 1.41 | 0.50-3.97 | 0.52 |
| Induction T _{CM} vs OS | 3.37 | 1.01-11.2 | 0.048 | 3.77 | 1.08-13.2 | 0.04 |
| Reduction T _{EM} vs LFS | 0.10 | 0.03-0.38 | 0.001 | 0.10 | 0.03-0.39 | 0.001 |
| Reduction T _{EM} vs OS | 0.14 | 0.03-0.57 | 0.006 | 0.13 | 0.03-0.57 | 0.006 |
| Induction T _{EFF} vs LFS | 0.22 | 0.07-0.68 | 0.009 | 0.26 | 0.08-0.87 | 0.03 |
| Induction T _{EFF} vs OS | 0.10 | 0.03-0.40 | 0.001 | 0.10 | 0.02-0.51 | 0.005 |
| Transition vs LFS ** | <0.001 | *** | | <0.001 | *** | |
| Transition vs OS ** | <0.001 | *** | | <0.001 | *** | |

Abbreviations: LFS, leukemia-free survival, OS, overall survival

*Adjusted for age and number of induction cycles

** Transition: reduction of T_{EM} with simultaneous induction of T_{eff}

*** To few events for Cox regression analysis

T cell phenotypes in older patients

The trial protocol specified analyses of outcome by subgroups according to patient age at enrollment (< 60 and > 60 years). The CD8⁺ T cell count or the distribution of CD8⁺ T_N/T_{CM}/T_{EM}/T_{eff} cells at onset of immunotherapy did not differ significantly between age groups (Figure S3A-S3D). During the first cycle, treatment with HDC/IL-2 induced a significant increase of the frequency of T_{eff} cells only in older patients (Figure S3D). The impact

of the induction of T_N and T_{eff} cells, the reduction of the frequency of T_{EM} cells and the apparent transition of T_{EM} cells into T_{eff} cells on outcome was pronounced in older patients. All of these aspects of immunotherapy-induced CD8⁺ T cell differentiation thus heralded LFS and/or OS in this age group (Figure 3F-3J) and remained significantly predictive after correction for prognostic factors (Table 1). The dynamics of CD8⁺ T cell subsets during cycle 1 did not significantly prognosticate LFS or OS in younger patients (Figure S3E-S3N).

Table 2: Patient characteristics

| | n (%) | | LFS, n (%) | |
|------------------------------|------------------------|------------------------|--------------|------------|
| | All patients (n=84) | Age ≥60 (n=47) | All patients | Age ≥60 |
| Sex | | | | |
| Female | 44 (52) | 23 (49) | 15/44 (34) | 6/23 (26) |
| Male | 40 (48) | 24 (51) | 20/40 (50) | 10/24 (42) |
| Risk group | | | | |
| Favorable risk | 34 (40) | 17 (36) | 18/34 (53) | 8 /17 (47) |
| Intermediate I | 25 (30) | 10 (21) | 9/25 (36) | 2/10 (20) |
| Intermediate II | 13 (15) | 9 (19) | 6/13 (46) | 4/9 (44) |
| High risk | 7 (8) | 6 (13) | 1/7 (14) | 1/6 (17) |
| ND | 5 (6) | 5 (11) | 1/5 (20) | 1/5 (20) |
| Karyotype | | | | |
| Normal | 44 (52) | 23 (49) | 19/44 (43) | 9/23 (39) |
| Favorable | 14 (17) | 5 (11) | 8/14 (57) | 2/5 (40) |
| Unfavorable | 7 (8) | 6 (13) | 2/7 (29) | 2/6 (33) |
| Other | 15 (18) | 10 (21) | 5/15 (33) | 3/10 (30) |
| ND | 4 (5) | 3 (6) | 1/4 (25) | 0/3 (0) |
| Mutation status | | | | |
| NPM1 | n=69 25 (36) | n=39 14 (36) | 12/25 (48) | 6/14 (43) |
| FLT3 | n=72 6 (8) | n=37 3 (8) | 0/6 (0) | 0/3 (0) |
| CEBPA | n=42 3 (7) | n=23 1 (4) | 1/3 (33) | 0/1 (0) |
| Induction courses | | | | |
| 1 | 63 (75) | 33 (70) | 31/63 (49) | 14/33 (44) |
| >1 | 21 (25) | 14 (30) | 4/21 (19) | 2/14 (14) |
| Consolidation courses | | | | |
| 0-2 | 41 (49) | 27 (57) | 15/41 (37) | 6/27 (22) |
| >2 | 43 (51) | 20 (43) | 20/43 (47) | 10/20 (50) |

Abbreviations: LFS, leukemia-free survival, ND, not done

Additional markers of T cell activation

In addition to the distribution of T cell phenotypes we analyzed the impact of the immunotherapy on cytotoxic T cell activation markers. The expression levels of CD69 and CD25, which are frequently employed markers of activated T cells, were unaffected by HDC/IL-2 treatment (Figure S4A-S4B) and the expression levels of these markers did not influence clinical outcome (data not shown). In contrast, the expression of HLA-DR was reduced during the first cycle of therapy (Figure S4C). HLA-DR was mainly expressed by the memory populations, and the reduction was significant for T_{CM} and T_{EM} cells but not T_N or T_{eff} cells (data not shown). A low expression of HLA-DR on CD8⁺ T cells at the end

of the first HDC/IL-2 treatment cycle weakly predicted a favorable clinical outcome (univariate Cox regression analysis for OS was p = 0.04, while multivariate Cox regression analysis for OS was p = 0.12; Figure 4A).

Presence of leukemia-specific T cells heralds maintained CR

We next determined the ability of CD8⁺ T cells to produce IFN- γ *ex vivo* before and after immunotherapy. The capacity of patients' CD8⁺ T cells to produce IFN- γ after stimulation with PMA/ionomycin was similar before and after the first treatment cycle (Figure S4D) and did not impact on the clinical outcome (not shown).

To determine whether patients harbored CD8⁺ T cells that were specifically reactive with leukemic antigens, PBMCs were stimulated by peptide pools representing known leukemia-associated antigens (WT1, survivin, PRAME and hTERT) followed by quantification of IFN- γ -producing CD8⁺ T cells. Healthy donor CD8⁺ T cells from PBMCs did not produce above background levels of IFN- γ in response to the leukemia-derived peptides (data not shown). Three out of 20 analyzed patients displayed antigen-specific CD8⁺ T cells against any of these antigens at onset of immunotherapy (C1D1). Two of these patients experienced late relapses (at > 600 days). Seven patients acquired leukemia-reactive T cells during immunotherapy (at C1D21, $n = 2$, C3D1, $n = 4$ or C3D21, $n = 1$), all of whom remained in uninterrupted CR. By Kaplan-Meier analysis, presence of leukemia-specific CD8⁺ T cells predicted LFS ($p = 0.01$) whereas presence of antigen-specific CD8⁺ T cells responding to viral control peptides (CMV, EBV and influenza; CEF) did not ($p = 0.5$; Figure 4B-4C).

DISCUSSION

The results of this study imply, for the first time, that an altered distribution of cytotoxic T cell phenotypes in blood during immunotherapy may be relevant to the prognosis of non-transplanted AML patients in CR. A

major finding was that these aspects of T cell immunity determined the relapse risk and survival of older patients, who are at high risk of relapse and death [16]. Our results also point to conceivable biomarkers for efficacy, including memory to effector T cell transition, which may be broadly useful in T cell-based cancer immunotherapy. The reason for the lack of significant correlation between the dynamics of CD8⁺ T cell subsets and outcome in younger patients is not known, but might be related to a lower incidence of relapse in this age group along with fewer samples available for analysis.

The precise mechanism explaining our finding of a shift from T_{EM} cells to T_{eff} cells in blood of AML patients during the first cycle of HDC/IL-2 immunotherapy remains to be determined. However, IL-2 has been reported to promote the development of CD8⁺ T cells into memory and effector cell populations (reviewed in [17]) and it is thus conceivable that the IL-2 component of the HDC/IL-2 regimen was crucial for the observed memory to effector T cell transition. Also, the memory to effector cell transition is compatible with the view that T_{EM} cells differentiate into T_{eff} cells after antigen exposure [14, 15]. While alternative explanations are possible, including extravasation of T cell subsets during immunotherapy, we hypothesize that immunotherapy with HDC/IL-2 facilitates the development of effector T cells, which may explain the strong prediction of clinical outcome in

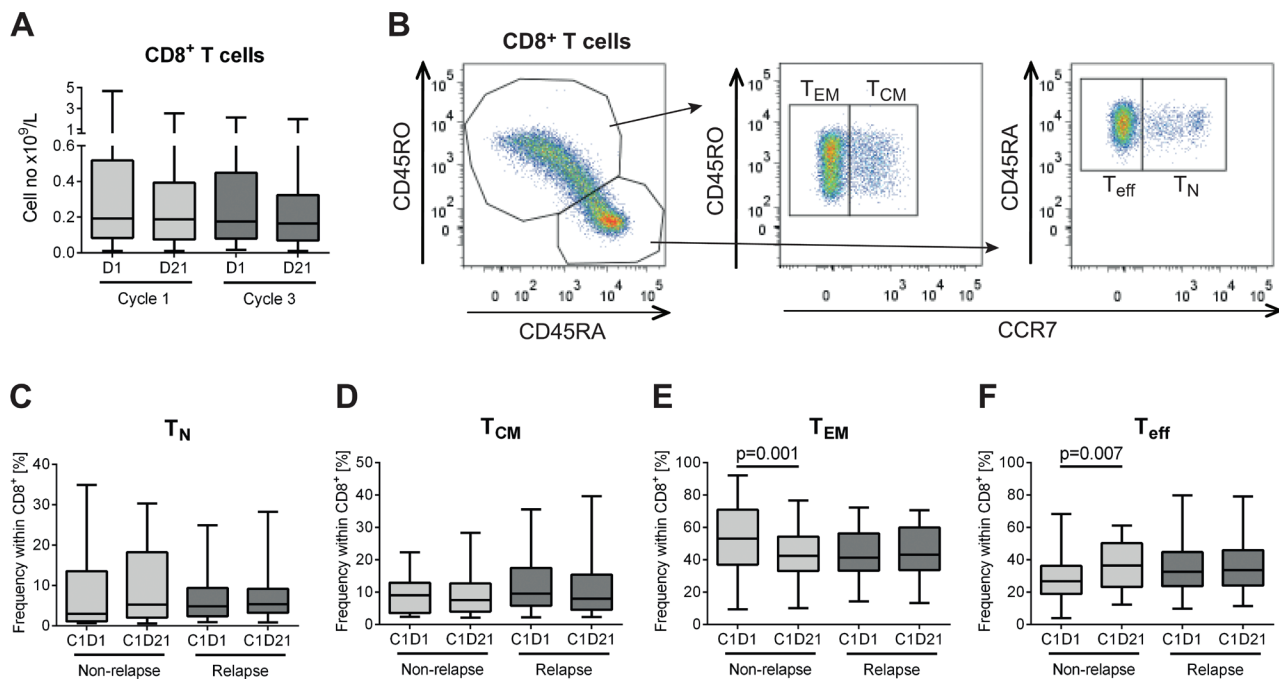


Figure 2: Distribution of CD8⁺ subsets in non-relapsing and relapsing AML patients during immunotherapy with HDC/IL-2. **A.** Blood counts of CD8⁺ T cells before (D1) and after (D21) the first and third cycles of HDC/IL-2 treatment (C1D1 $n = 62$; C1D21 $n = 54$; C3D1 $n = 52$; C3D21 $n = 51$). **B.** Gating strategy for determining naïve (T_N; CD45RA⁺CCR7⁺), central memory (T_{CM}; CD45RO⁺CCR7⁺), effector memory (T_{EM}; CD45RO⁺CCR7⁻) and effector (T_{eff}; CD45RA⁺CCR7⁻) cells within the CD8⁺ T cell compartment. **C-F.** Frequency of the CD8⁺ subpopulations T_N **C.**, T_{CM} **D.**, T_{EM} **E.** and T_{eff} **F.** cells in non-relapsing ($n = 18$) and relapsing ($n = 26$) patients at the onset (C1D1) or end of (C1D21) the first cycle of immunotherapy. Statistical analysis was performed by Student's paired *t*-test.

patients experiencing T_{EM} to T_{eff} transition. Of note, others have shown that AML-specific T cells carry a T_{eff} cell phenotype [18]. In further support for the development of functional T cell immunity during immunotherapy, detectable levels of $CD8^+$ T cells that reacted with leukemic peptides evolved in 7/20 patients during the course of therapy. Presence of leukemia-specific $CD8^+$ T cells, but not $CD8^+$ T cells reactive with common viral

antigens, significantly predicted LFS. These results concur with previous observations on a role for immunoreactive leukemia-associated antigens in AML [5, 6, 19] and lend support to the role of cytotoxic T cells for surveillance of the leukemic clone.

HLA-DR is considered a T cell activation marker [20], but increased expression of HLA-DR on $CD8^+$

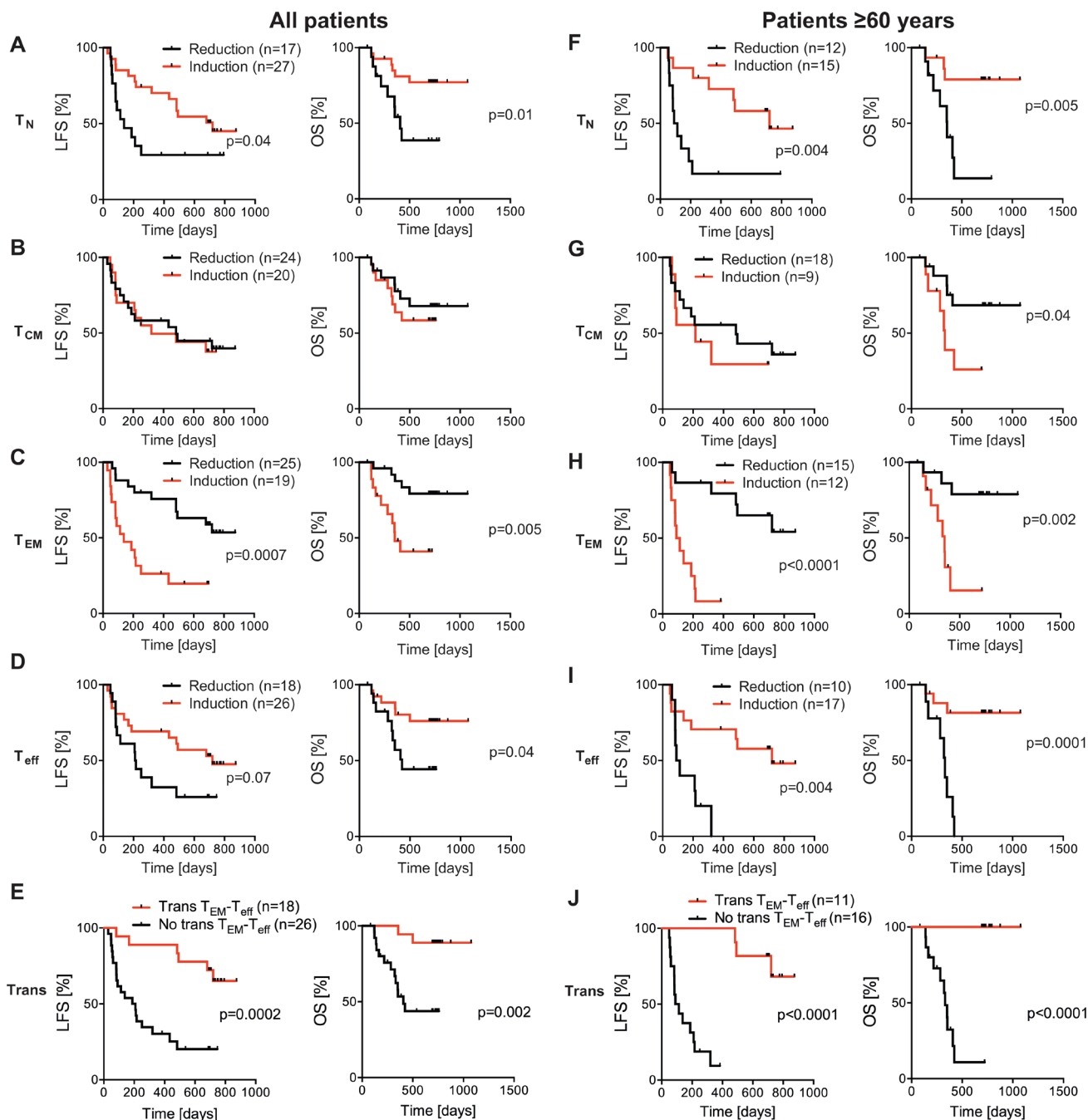


Figure 3: Impact of altered distribution of $CD8^+$ subsets on the clinical outcome of patients receiving HDC/IL-2. In A-D, all patients, and in F-I, patients ≥ 60 years old, were dichotomized based on induction or reduction of the frequency of $CD8^+$ T cell subsets during the first treatment cycle, followed by analyses of LFS and OS by the logrank test. In E, all patients, and in J, patients ≥ 60 years old, were dichotomized based on transition (trans) or no transition from T_{EM} to T_{eff} cells and LFS and OS were analyzed by the logrank test. A patient was considered transition-positive by the occurrence of a reduction of T_{EM} cells (%) and a simultaneous induction of T_{eff} cells (%) during the first treatment cycle.

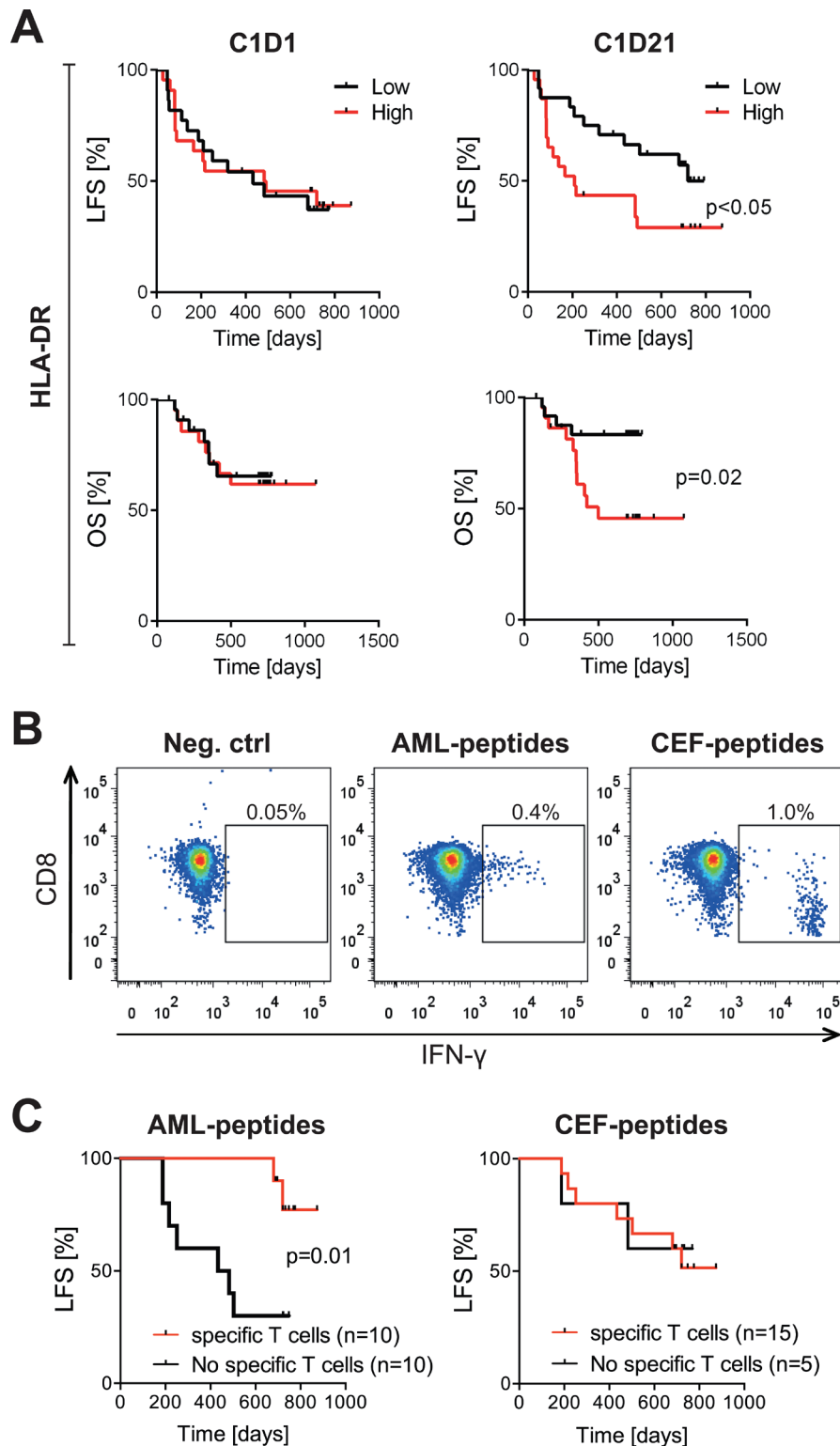


Figure 4: Impact of HLA-DR expression and leukemia-specific CD8⁺ T cells on LFS in patients receiving HDC/IL-2. **A.** Patients were dichotomized by the median HLA-DR expression on CD3⁺CD8⁺ T cells at onset of therapy (C1D1; $n = 44$) or after the first treatment cycle (C1D21; $n = 47$). LFS and OS were analyzed by the logrank test. **B-C.** Blood samples from patients undergoing HDC/IL-2 treatment were stimulated with a pool of peptides from leukemia-associated antigens (AML-peptides) or a pool of peptides from CMV, EBV and influenza viruses (CEF-peptides), or no peptides (negative control). The percentage of IFN- γ producing CD8⁺ T cells was determined by flow cytometry. In **B.** representative dot plots show IFN- γ production in samples without stimulation and samples stimulated with AML- or CEF-peptides. In **C.** patients were dichotomized based on the presence or absence of AML-specific or CEF-specific CD8⁺ T cells, followed by analysis of LFS by the logrank test. Only patients with no events occurring before the last time point of analysis of antigen-specific T cells (C3D21; 105 days) were considered in the latter analyses.

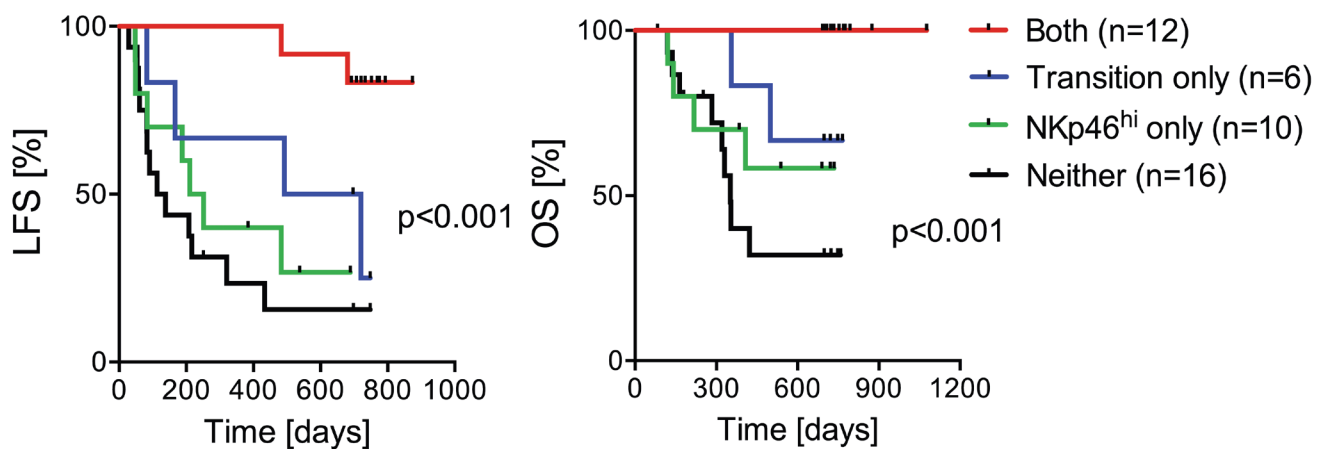


Figure 5: Impact of T_{EM} to T_{eff} cell transition and NK cell NKp46 expression on clinical outcome. A-B. Patients were regarded as transition-positive when showing a reduction of T_{EM} cells (%) and a simultaneous induction of T_{eff} cells (%) during the first treatment cycle, and were considered NKp46^{high} when their CD16⁺ NK cells expressed above median levels of NKp46 after the first cycle of immunotherapy (C1D21). Data show the LFS and OS (analyzed by the logrank test for trend) of patients with transition T_{EM} - T_{eff} and NKp46^{high} (both), transition only, NKp46^{high} only, no transition T_{EM} - T_{eff} and low NKp46 expression (neither).

T cells has also been linked to T cell suppression and exhaustion in cancer, chronic virus infections and aging [21, 22]. The reduction of HLA-DR expression in T_{CM} and T_{EM} cells during immunotherapy and the trend towards favorable clinical outcome among patients with reduced expression suggest that the memory population of CD8⁺ T cells may be shifted towards improved effector function during immunotherapy, but further studies are required to confirm this hypothesis.

HDC/IL-2 has been developed for AML immunotherapy to expand and activate populations of T cells and natural killer (NK) cells (IL-2 component) and concurrently protect these anti-leukemic effector cells against inactivation by myeloid cell-derived reactive oxygen species (HDC component) [23]. Earlier results from the Re:Mission trial show that treatment with HDC/IL-2 triggered expression of natural cytotoxicity receptors (NCR), which are activating receptors of importance for NK cell recognition of aberrant cells, along with increasing NK cell counts in blood [24, 25]. The Re:Mission trial results suggested that in-cycle increments of NCR expression and NK cell counts only weakly predicted LFS and OS [24], whereas the results presented herein imply that altered distribution of CD8⁺ T cell subsets during the first treatment cycle was critical to prognosis. Additional studies are required to define the relative contribution by NK cells and T cells in mediating the anti-leukemic properties of HDC/IL-2 and in surveillance of the leukemic clone in AML. We observed that patients with a T_{EM} to T_{eff} cell transition during the first treatment cycle along with high NKp46 expression on cytotoxic CD16⁺ NK cells after immunotherapy were strikingly protected from relapse, while patients with T_{EM} to T_{eff} cell transition or high NKp46 expression alone were only partly protected (Figure 5). These data support the

hypothesis that T and NK cell effector functions evolve simultaneously during immunotherapy and that both cell subsets may contribute in relapse protection.

A limitation to this study is that relatively few patients were available for assessment of T cell phenotype and function, and larger studies are required to confirm our observations. Also, the observed dynamics of CD8⁺ T cell subsets during treatment with HDC/IL-2 may reflect an inherent survival advantage of a subgroup of patients with functional cellular immunity rather than effects of immunotherapy. Randomized comparisons, preferably within the group of older patients at high risk for relapse, should be performed to further define the role of CD8⁺ T cell dynamics for the course of AML and in AML immunotherapy.

PATIENTS AND METHODS

Patients, study design and objectives

This single-armed multicenter phase IV study (Re:Mission, NCT01347996, registered at www.clinicaltrials.gov) enrolled 84 patients (age 18-79) with AML in first CR. As outlined schematically in Figure 1, the patients received ten consecutive 21-day cycles of histamine dihydrochloride (HDC; Ceplene) in combination with low-dose IL-2 during 18 months or until relapse or death. Patients were monitored for at least six additional months after the end of immunotherapy. Patients who discontinued prematurely from the study (9 due to adverse events, 3 due to withdrawn consent and 2 for other reasons) were censored at the last captured follow-up date. The dosage, route of administration, exclusion criteria

etc. were identical to those described for a previous phase III trial [10]. Primary endpoints in the Re:Mission study included assessment of the quantitative and qualitative pharmacodynamic effects of HDC/IL-2 by monitoring T and NK cell phenotypes before and after treatment cycles. The protocol stated that all data collected in support of these objectives were to be analyzed for the populations as a whole and by subgroups according to patient age at enrolment (< 60 and > 60 years). The herein reported aspects of T cell biology vs. clinical outcome (LFS and OS) were performed post-hoc. Patient characteristics are presented in Table 2. A more detailed account for previous induction and consolidation therapy can be found elsewhere [24, 25].

Sampling of peripheral blood and flow cytometry

Peripheral blood was collected before and after the first and third treatment cycles, i.e. cycle 1, day 1 (C1D1) and cycle 1, day 21 (C1D21), cycle 3, day 1 (C3D1) and cycle 3, day 21 (C3D21). PBMC were isolated and cryopreserved at local sites and shipped on dry ice to the central laboratory (at the Sahlgrenska Cancer Center, University of Gothenburg, Sweden) for analysis by use of flow cytometry. For these analyses, the frozen PBMC samples were thawed quickly in Iscoves' medium supplemented with 10% FCS. Subsequently, cells were washed in Iscoves' medium and thereafter in PBS. Cells were first stained with LIVE/DEAD fixable yellow stain (Life technologies, Grand Island, NY, USA) by incubation for 30 min at 4°C in PBS, followed by staining for surface markers for 30 min at 4°C in PBS containing 0.5% BSA and 0.1% EDTA or in brilliant stain buffer (BD Biosciences, Stockholm, Sweden). The following anti-human monoclonal antibodies were used for phenotyping: CD3-FITC (HIT3a), CD4-APC-H7 (RPA-T4), CD4-Horizon V450 (RPA-T4), CD8-APC (RPA-T8), CD8-PerCP-Cy5.5 (RPA-T8/SK1), CD8-Qdot705 (3B5), CD16-Horizon V450 (3G8), CD25-Brilliant Violet 421 (M-A251), CD45RA-APC (HI100), CD45RO-PE (UCHL1), CD56-PerCP-eFluor710 (CMSSB), CD56-PE-Cy7 (NCAM16.2), CD69-PE-Cy7 (FN50), HLA-DR-FITC (L243) (all from BD Biosciences). CCR7-PE-Cy7 (G043H7) from Biolegend, San Diego, CA, USA. CD3-Pacific Blue (S4.1), CD14-Qdot655 (TüK4) and streptavidin-Qdot605 (all from Life technologies). Intracellular staining of IFN- γ -PE-Cy7 (B27; BD Biosciences) was performed after surface staining and fixation and permeabilization using the FoxP3 fixation/permeabilization kit (eBioscience, San Diego, CA, USA) according to the manufacturer's instructions.

Stained samples were analyzed on a 4-laser BD LSRFortessa SORP flow cytometer (405, 488, 532, and 640 nm; BD Biosciences). Data were analyzed using the FlowJo software, version 7.6.5 or later (TreeStar, Ashland, OR, USA) or the FACSDiva software, version 6 or later

(BD Biosciences). Samples with less than 25 % viability were excluded.

Blood samples were available from 81 out of 84 patients. Differential counts of whole blood were performed at local sites and were utilized to calculate absolute counts of blood CD8⁺ T cells. All available samples were analyzed for T cell content and expression of activation markers (including CD25 and CD69 and IFN- γ production in response to PMA). If an analysis failed according to pre-defined criteria (experimental failure, few cells, poor cellular viability), a second sample was thawed for re-analysis. If also the second attempt failed to generate data, these samples were excluded from analysis. In a second set of experiments, available samples were analyzed for distribution of T cell subsets and HLA-DR expression. All successfully analyzed samples, according to the pre-defined criteria stated above, were included in this report. A flow chart of patients that were included or excluded from the analyses is shown in Figure S5.

IFN- γ -production after PMA/ionomycin or peptide stimulation

Thawed samples collected before and after the first and third treatment cycles of HDC/IL-2 immunotherapy were seeded in Iscoves' medium supplemented with 10 % FCS in 96-well plates, 1x10⁶ cells per well. Cells were left to rest over night at 37°C. The next day, cells were washed with warm medium before stimulation consisting either of a 5 hours incubation with 0.2 μ g/ml PMA (Sigma-Aldrich Munich, Germany) together with 2 μ g/ml ionomycin (Sigma-Aldrich) or a 6 hours incubation with a pool of AML-peptides (overlapping peptides covering the leukemia-associated proteins WT1, PRAME, survivin and hTERT; Miltenyi Biotec) or, as a control, CEF-peptides (32 peptides specific for MHC class I with sequences derived from human cytomegalovirus (HCMV), Epstein-Barr virus (EBV) and influenza viruses; Miltenyi Biotec).

The final concentration of each peptide was 0.6 nmol. The co-stimulatory molecules anti-CD28 (CD28.2; BD Biosciences) and anti-CD49d (9F10; BD Biosciences), 2 μ g/ml of each, were added to wells with peptide stimulation, as well as to the negative control samples, which served to determine the background signal. For all stimuli, Golgiplug (BD Biosciences) was added during the last 4 hours of stimulation according to manufacturer's protocol. Samples were stained with LIVE/DEAD fixable yellow stain and surface markers before being fixed, permeabilized and intracellularly stained with IFN- γ as described above. Patients were considered to harbor AML- or CEF-specific CD8⁺ T cells if the frequency of IFN- γ -producing CD8⁺ T cells exceeded 0.05 % (after subtraction of background as determined by the negative control sample) at any of the time points (C1D1, C1D21,

C3D1, C3D21). To avoid selection bias, only patients with no events (relapses) occurring before the last time point (C3D21; 105 days) were considered in these analyses.

Statistics

In accordance with the statistical analysis plan, paired *t*-test was used for single comparisons of CD8⁺ T cell phenotypes. To determine the impact of the dynamics of CD8⁺ subsets or markers on outcome, samples were dichotomized by the median for single time points or by induction/reduction during the first treatment cycle if not otherwise stated. The analyses of T cell function *vs.* outcome are based on data for LFS, defined as the time in days from start of immunotherapy with HDC/IL-2 to relapse or death from any cause, and OS, defined as the corresponding time to death, available at the trial closing date (October 13, 2014), i.e. when all patients had been followed for at least 24 months (18 months of treatment and 6 months of additional follow-up). Relapse was defined as at least 5% blast cells in the bone marrow or presence of extramedullary leukemia. The impact of T cell phenotype on LFS and OS was analyzed using the log-rank test.

The impact of age, risk group classification according to recommendations by the European LeukemiaNet [26], number of induction courses required to achieve CR (1 or > 1), and number of consolidation courses (0-2 or > 2) on LFS and OS was assessed using the Cox univariate regression model. The prognostic factors with a *p*-value below 0.1 (age, and number of induction cycles) were included as potential confounders in a Cox multivariate regression analysis (Table 1). All indicated *p*-values are 2-sided. This study was conducted according to Declaration of Helsinki principles. The trial was approved by the Ethics Committees of each participating institution, and all patients gave written informed consent before enrollment.

ACKNOWLEDGMENTS

The authors are indebted to the participating patients and to the participants in the Re:Mission Study Group.

CONFLICTS OF INTEREST

Authors MB and KH are past or present consultants to the study sponsor (Meda Pharma). Author KH holds patents protecting the use of histamine dihydrochloride in cancer immunotherapy. Authors AM, RF and FBT have received honoraria and/or travel grants from the study sponsor. The other authors declare no conflict of interest.

GRANT SUPPORT

This work was supported by Meda Pharma, Bad Homburg, Germany (Study Sponsor), the Swedish Research Council (2012-2047, 2012-3205, 2011-3003), the Swedish Society for Medical Research (SSMF), the Swedish Society of Medicine (SLS-502321, SLS-406151), the Swedish Cancer Society (Cancerfonden, CAN 212/595, CAN 213/550), the Swedish state *via* the ALF agreement (ALFGBG-436961, ALFGBG-151441, ALFGBG-292701), the Erna and Victor Hasselblad Foundation, the Torsten and Ragnar Söderberg Foundation, The IngaBritt and Arne Lundberg Foundation, the Assar Gabrielsson foundation, The Lars Hierta Foundation, Lion Cancer Foundation West, BioCARE - a National Strategic Research Program at University of Gothenburg, and the Sahlgrenska Academy at University of Gothenburg.

Editorial note

This paper has been accepted based in part on peer-review conducted by another journal and the authors' response and revisions as well as expedited peer-review in *Oncotarget*.

REFERENCES

1. Burnett AK, Goldstone A, Hills RK, Milligan D, Prentice A, Yin J, Wheatley K, Hunter A and Russell N. Curability of patients with acute myeloid leukemia who did not undergo transplantation in first remission. *Journal of clinical oncology*. 2013; 31:1293-1301.
2. Martner A, Thoren FB, Aurelius J and Hellstrand K. Immunotherapeutic strategies for relapse control in acute myeloid leukemia. *Blood reviews*. 2013; 27:209-216.
3. Appelbaum FR. Haematopoietic cell transplantation as immunotherapy. *Nature*. 2001; 411:385-389.
4. Kolb HJ. Graft-*versus*-leukemia effects of transplantation and donor lymphocytes. *Blood*. 2008; 112:4371-4383.
5. Montagna D, Maccario R, Locatelli F, Montini E, Pagani S, Bonetti F, Daudt L, Turin I, Lisini D, Garavaglia C, Dellabona P and Casorati G. Emergence of antitumor cytolytic T cells is associated with maintenance of hematologic remission in children with acute myeloid leukemia. *Blood*. 2006; 108:3843-3850.
6. Greiner J, Schmitt M, Li L, Giannopoulos K, Bosch K, Schmitt A, Dohner K, Schlenk RF, Pollack JR, Dohner H and Bullinger L. Expression of tumor-associated antigens in acute myeloid leukemia: Implications for specific immunotherapeutic approaches. *Blood*. 2006; 108:4109-4117.
7. Pizzitola I, Anjos-Afonso F, Rouault-Pierre K, Lassailly F, Tettamanti S, Spinelli O, Biondi A, Biagi E and Bonnet D. Chimeric antigen receptors against CD33/CD123 antigens

- efficiently target primary acute myeloid leukemia cells *in vivo*. *Leukemia*. 2014; 28:1596-1605.
8. Van Tendeloo VF, Van de Velde A, Van Driessche A, Cools N, Anguille S, Ladell K, Gostick E, Vermeulen K, Pieters K, Nijs G, Stein B, Smits EL, Schroyens WA, Gadisseur AP, Vrelust I, Jorens PG, et al. Induction of complete and molecular remissions in acute myeloid leukemia by Wilms' tumor 1 antigen-targeted dendritic cell vaccination. *Proceedings of the National Academy of Sciences of the United States of America*. 2010; 107:13824-13829.
 9. Krupka C, Kufer P, Kischel R, Zugmaier G, Lichtenegger FS, Kohnke T, Vick B, Jeremias I, Metzeler KH, Altmann T, Schneider S, Fiegl M, Spiekermann K, Bauerle PA, Hiddemann W, Riethmuller G, et al. Blockade of the PD-1/PD-L1 axis augments lysis of AML cells by the CD33/CD3 BiTE antibody construct AMG 330: reversing a T-cell-induced immune escape mechanism. *Leukemia*. 2016; 30:484-91.
 10. Brune M, Castaigne S, Catalano J, Gehlsen K, Ho AD, Hofmann WK, Hogge DE, Nilsson B, Or R, Romero AI, Rowe JM, Simonsson B, Spearing R, Stadtmayer EA, Szer J, Wallhult E, et al. Improved leukemia-free survival after postconsolidation immunotherapy with histamine dihydrochloride and interleukin-2 in acute myeloid leukemia: results of a randomized phase 3 trial. *Blood*. 2006; 108:88-96.
 11. Farber DL, Yudanin NA and Restifo NP. Human memory T cells: generation, compartmentalization and homeostasis. *Nat Rev Immunol*. 2014; 14:24-35.
 12. Sallusto F, Geginat J and Lanzavecchia A. Central memory and effector memory T cell subsets: function, generation, and maintenance. *Annu Rev Immunol*. 2004; 22:745-763.
 13. Rosenberg SA and Restifo NP. Adoptive cell transfer as personalized immunotherapy for human cancer. *Science*. 2015; 348:62-68.
 14. Restifo NP and Gattinoni L. Lineage relationship of effector and memory T cells. *Current opinion in immunology*. 2013; 25:556-563.
 15. Roychoudhuri R, Lefebvre F, Honda M, Pan L, Ji Y, Klebanoff CA, Nichols CN, Fourati S, Hegazy AN, Goulet JP, Gattinoni L, Nabel GJ, Gilliet M, Cameron M, Restifo NP, Sekaly RP, et al. Transcriptional profiles reveal a stepwise developmental program of memory CD8(+) T cell differentiation. *Vaccine*. 2015; 33:914-923.
 16. Burnett AK. Treatment of acute myeloid leukemia: are we making progress? *ASH Education Program Book*. 2012; 2012:1-6.
 17. Liao W, Lin JX and Leonard WJ. IL-2 family cytokines: new insights into the complex roles of IL-2 as a broad regulator of T helper cell differentiation. *Current opinion in immunology*. 2011; 23:598-604.
 18. Scheibenbogen C, Letsch A, Thiel E, Schmittel A, Mailaender V, Baerwolf S, Nagorsen D and Keilholz U. CD8 T-cell responses to Wilms tumor gene product WT1 and proteinase 3 in patients with acute myeloid leukemia. *Blood*. 2002; 100:2132-2137.
 19. Greiner J, Schneider V, Schmitt M, Gotz M, Dohner K, Wiesneth M, Dohner H and Hofmann S. Immune responses against the mutated region of cytoplasmatic NPM1 might contribute to the favorable clinical outcome of AML patients with NPM1 mutations (NPM1mut). *Blood*. 2013; 122:1087-1088.
 20. Ko HS, Fu SM, Winchester RJ, Yu DT and Kunkel HG. Ia determinants on stimulated human T lymphocytes. Occurrence on mitogen- and antigen-activated T cells. *J Exp Med*. 1979; 150:246-255.
 21. Arruvito L, Payaslian F, Baz P, Podhorzer A, Billordo A, Pandolfi J, Semeniuk G, Arribalzaga E and Fainboim L. Identification and clinical relevance of naturally occurring human CD8+HLA-DR+ regulatory T cells. *J Immunol*. 2014; 193:4469-4476.
 22. Imamichi H, Lempicki RA, Adelsberger JW, Hasley RB, Rosenberg A, Roby G, Rehm CA, Nelson A, Krishnan S, Pavlick M, Woods CJ, Baseler MW and Lane HC. The CD8+ HLA-DR+ T cells expanded in HIV-1 infection are qualitatively identical to those from healthy controls. *Eur J Immunol*. 2012; 42:2608-2620.
 23. Thoren FB, Romero AI, Brune M and Hellstrand K. Histamine dihydrochloride and low-dose interleukin-2 as post-consolidation immunotherapy in acute myeloid leukemia. *Expert Opin Biol Ther*. 2009; 9:1217-1223.
 24. Martner A, Rydstrom A, Riise RE, Aurelius J, Anderson H, Brune M, Foa R, Hellstrand K and Thoren FB. Role of natural killer cell subsets and natural cytotoxicity receptors for the outcome of immunotherapy in acute myeloid leukemia. *Oncoimmunology*. 2015:DOI: 10.1080/2162402X.2162015.1041701.
 25. Martner A, Rydstrom A, Riise RE, Aurelius J, Anderson H, Brune M, Foa R, Hellstrand K and Thoren FB. NK cell expression of natural cytotoxicity receptors may determine relapse risk in older AML patients undergoing immunotherapy for remission maintenance *Oncotarget*. 2015:doi: 10.18632/oncotarget.15559.
 26. Dohner H, Estey EH, Amadori S, Appelbaum FR, Buchner T, Burnett AK, Dombret H, Fenaux P, Grimwade D, Larson RA, Lo-Coco F, Naoe T, Niederwieser D, Ossenkoppele GJ, Sanz MA, Sierra J, et al. Diagnosis and management of acute myeloid leukemia in adults: recommendations from an international expert panel, on behalf of the European LeukemiaNet. *Blood*. 2010; 115:453-474.