

A case of adenosquamous pancreatic cancer with a KRAS G12C mutation with an exceptional response to immunotherapy

Murtaza Ahmed¹, Brent K. Larson², Arsen Osipov³, Nilofer Azad⁴ and Andrew Hendifar³

¹Department of Internal Medicine, Cedars Sinai Medical Center, Los Angeles, CA 90048, USA

²Department of Pathology and Laboratory Medicine, Cedars Sinai Medical Center, Los Angeles, CA 90048, USA

³Department of Internal Medicine (Division of Hematology-Oncology) Cedars Sinai Medical Center, Los Angeles, CA 90048, USA

⁴Department of Oncology, Sidney Kimmel Comprehensive Cancer Center, Johns Hopkins University, Baltimore, MD 21218, USA

Correspondence to: Andrew Hendifar, **email:** andrew.hendifar@cshs.org

Keywords: pancreatic cancer; immunotherapy; metastasis

Received: May 29, 2024

Accepted: September 17, 2024

Published: October 11, 2024

Copyright: © 2024 Ahmed et al. This is an open access article distributed under the terms of the [Creative Commons Attribution License](https://creativecommons.org/licenses/by/4.0/) (CC BY 4.0), which permits unrestricted use, distribution, and reproduction in any medium, provided the original author and source are credited.

ABSTRACT

Pancreatic ductal adenocarcinoma (PDAC) is a leading cause of cancer-related deaths, with adenosquamous carcinoma of the pancreas (ASCP), a rare variant, representing 1–10% of cases. Standard chemotherapy trials for pancreatic cancer exclude ASCP, leaving its optimal treatment uncertain. This report describes a 68-year-old male with metastatic ASCP and a KRAS G12C mutation, progressing through multiple lines of systemic therapy, including targeted inhibition of KRAS G12C. Notably, the patient exhibited a robust response to single-agent immune checkpoint inhibition (ICI) with pembrolizumab, despite intact mismatch repair proteins. The limited success of traditional therapies in pancreatic cancer, coupled with the rarity of ASCP, presents a challenge in establishing effective treatment strategies. While KRAS G12C inhibitors demonstrated modest benefits, this case highlights the remarkable response to ICI in a patient with squamous histology. The distinct tumor microenvironment of ASCP, characterized by squamous differentiation, may contribute to this exceptional response. This underscores the need for further research and clinical trials focused on ICI in ASCP, with an ongoing multi-center phase 2 trial investigating outcomes in this specific subset.

INTRODUCTION

Pancreatic cancer is the third most common cause of cancer death in the United States, responsible for a projected 50,555 deaths in 2023 [1]. The incidence of pancreatic cancer continues to increase every year, and mortality has increased by 5% since 2000 [1]. Pancreatic ductal adenocarcinoma (PDAC) represents approximately 90% of all pancreatic cancers, whereas adenosquamous carcinoma of the pancreas (ASCP), a rare and aggressive variant of PDAC defined by at least 30% squamous differentiation, represents 1–10% of cases [2]. Given the

lack of validated screening or early symptoms, 80–90% of patients initially present with stage III or IV cancer, at which tumors are unresectable. For these patients the only option is systemic therapy, with a median overall survival (OS) ranging from 6.9 to 9.3 months [3]. Importantly, the trials that have established the present standard of care for chemotherapy in pancreatic cancer only enrolled pancreatic adenocarcinoma, so the true benefit of systemic chemotherapy in ASCP is wholly unknown.

Here, we present a case of metastatic ASCP with a KRAS G12C mutation refractory to multiple lines of systemic therapy, including platinum-based chemotherapy

and targeted inhibition of *KRAS* G12C. Subsequently, the cancer demonstrated an excellent response to single agent immune checkpoint inhibition.

CASE PRESENTATION

A 68-year-old man presented to our institution for recommendations regarding a diagnosis of advanced pancreatic cancer with progression on standard chemotherapy. Importantly, he provided informed written consent for the gathering and publication of his clinical, genomic and molecular data as well as deidentified images. He initially presented at an outside hospital in March 2019 with worsening abdominal pain. History revealed no relevant family or prior smoking history. Abdominal CT scan and subsequent PET-CT revealed a pancreatic head mass and multiple liver lesions. In June 2019, two core biopsies of a liver lesion revealed poorly differentiated carcinoma. Subsequently, in November 2019, a fine-needle aspiration (FNA) of the pancreatic mass demonstrated poorly differentiated carcinoma with glandular features. Given an ECOG

performance status of 1, the patient began systemic therapy for presumed PDAC with FOLFIRINOX (leucovorin, 5-fluorouracil, irinotecan, oxaliplatin), with an initial radiographic response. He subsequently had other systemic regimens over a 2-year period without a significant response and with progressive abdominal pain. This prompted him to present to our institution for further evaluation and care.

At our institution, the patient underwent a PET-CT scan, revealing that all the measurable lesions were FDG-avid: an 8.2 cm mass in the right inferior hepatic lobe with standard uptake value (SUV) of 10.8 and a 2.7 cm pancreatic head mass with SUV of 5.8 (Figure 1). A pathology review at our institution of the two prior liver core biopsies revealed a poorly differentiated carcinoma with squamous differentiation, as indicated by diffuse positive staining for p40, a recognized marker for squamous cells. (Figure 2). Next-generation sequencing (NGS) via the OncoPrint™ Comprehensive Assay Plus panel identified pathogenic mutations in *KRAS*, *ARID1A*, *TP53*, and *KDM6A* (Table 1), along with a low tumor mutational burden (TMB) of 5 mutations per

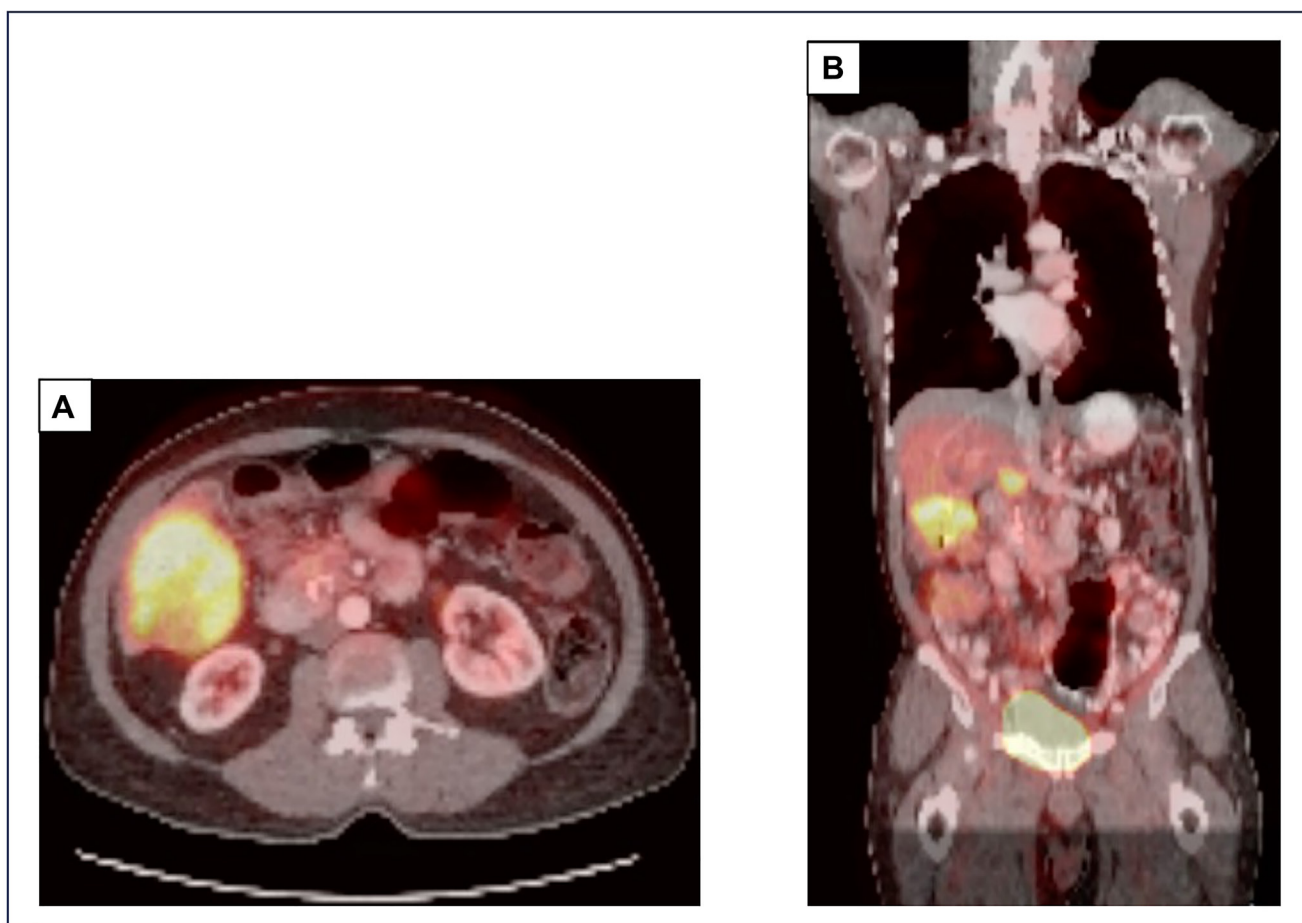


Figure 1: PET-CT scan at our institution prior to starting sotorasib demonstrates an 8.2 cm mass in the right inferior lobe of the liver with a SUV of 10.8 (A, B) and a 2.7 cm pancreatic head mass with a SUV of 5.8 (B). Abbreviations: PET: positron emission tomography; CT: computed tomography.

megabase (mut/Mb) and indeterminate microsatellite instability (MSI-I). The programmed death ligand-1 (PD-L1) and mismatch repair (MMR) protein status could not be assessed due to limited tissue availability, however records from the outside institution demonstrate intact MMR proteins via immunohistochemistry. These findings, combined with the pathology report from the previous FNA and exclusion of an extrapancreatic malignancy, led our tumor board to conclude that the neoplasm was likely an ASCP, with the adenocarcinoma component unsampled in the liver. Considering the presence of the *KRAS* G12C mutation, he was started on sotorasib in November 2022, which he tolerated well. Follow-up imaging in December 2022 and February 2023 indicated stable disease. However, in April 2023, a CT scan revealed an increase in size of the right hepatic metastatic lesion and a new 5.0 cm lesion in the left lateral hepatic lobe (Figure 3).

The patient was discussed in our multi-disciplinary conference and the recommendation was to initiate

an immune checkpoint inhibitor (ICI) considering the tumor's squamous histology. He received the first dose of pembrolizumab in May 2023. In July 2023, the patient was hospitalized for pancreatitis: investigational studies were unremarkable for common etiologies, hence it was likely an immune-related adverse event from the pembrolizumab. Symptoms resolved shortly after admission and steroids were not administered, but pembrolizumab was held for one month until lipase levels normalized and his activity level improved to his baseline of ECOG performance status of 1. A subsequent CT scan in July 2023 demonstrated a significant reduction in both hepatic masses, with the right lobe mass measuring 5.7 cm, decreased from 10.2 cm three months prior, representing an approximate 88% reduction in tumor volume (Figure 3). He has since resumed pembrolizumab and completed six cycles at our institution at the time of last follow-up in September 2023, after which returned to his prior institution to continue therapy.

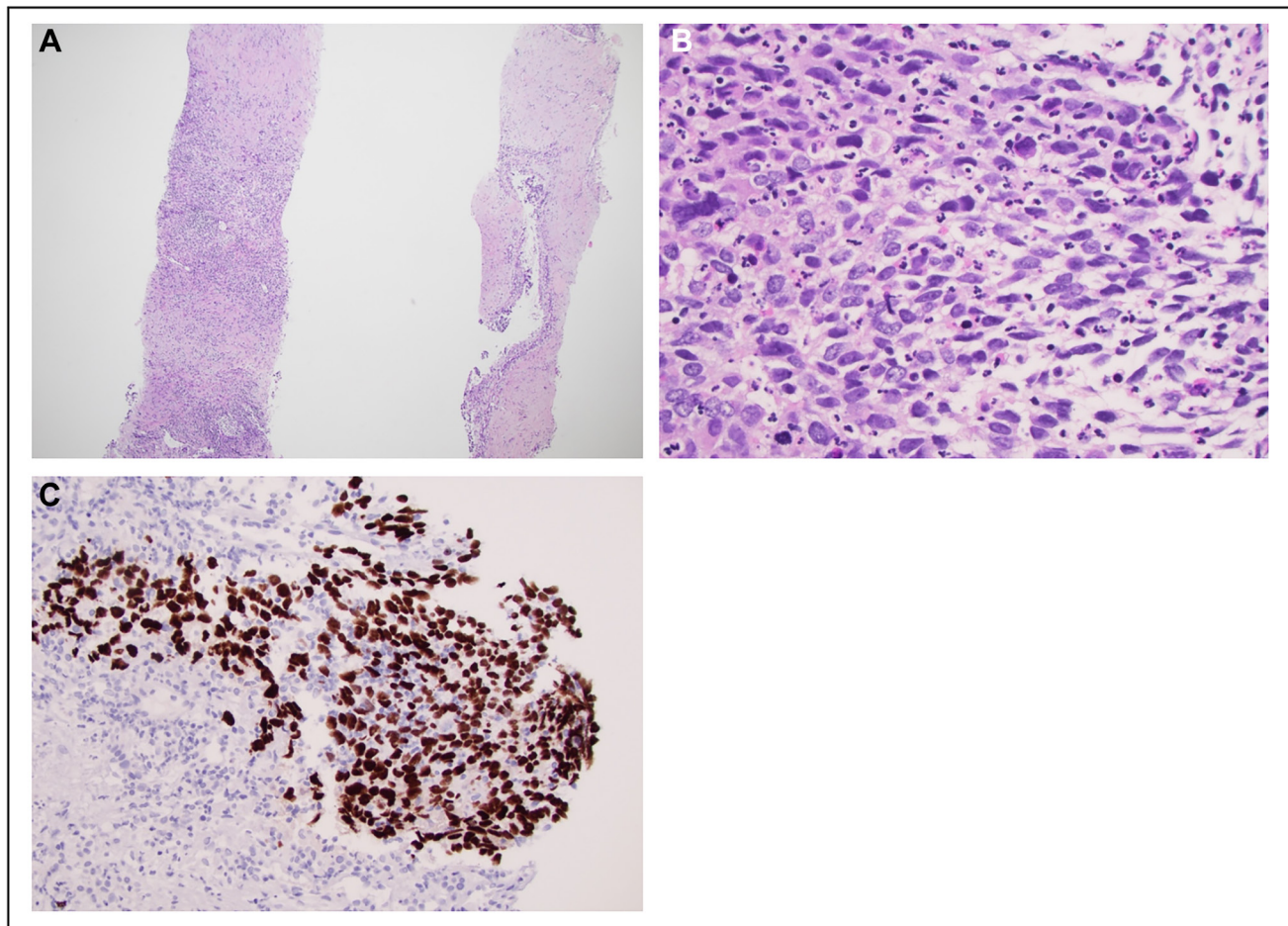


Figure 2: Histopathological and immunohistochemical images of a core biopsy of the liver lesion. (A) Low-power view of the liver biopsy demonstrating dense fibrosis and patchy inflammation with infiltration by nests of atypical cells (hematoxylin and eosin (H&E) stain, 40x magnification). (B) High-power examination of the tumor cells demonstrates nests of atypical cells with basaloid morphology, including elongated and enlarged nuclei, hyperchromasia, and high nucleus-to-cytoplasm ratios (H&E stain, 400x magnification). (C) Immunostaining for p40 demonstrates diffuse positive staining in tumor cell nuclei, supportive of squamous differentiation (p40 immunostain, 200x magnification).

Table 1: Genetic mutations detected in next-generation sequencing

Gene	Chromosome position	Nucleotide change	Amino acid change	Molecular consequence	Allele frequency (%)
KRAS	12: 25398285	c.34G> T	p.G12C	Missense	19.0
KDM6A	X: 27094421	c.3129dupT	p.D589Rfs*8	Frameshift	15.8
TP53	17: 7577121	c.817C>T	p.R273C	Missense	10.4
ARID1A	1: 27094421	c.3129dupT	p.V1044Cfs*3	Frameshift	8.5

DISCUSSION

In the past twenty years, the only major advancement in PDAC treatment has been the transition from a single cytotoxic agent to multiple cytotoxic agents, responsible for an increase in 5-year survival rate of 5% in 1998 to 12% in 2018, still the lowest of all cancers [1]. For patients with metastatic PDAC, the initial standard therapies are either FOLFIRINOX or gemcitabine and albumin-bound paclitaxel [3, 4]. These therapies, however, come at the expense of significant toxicities that can limit their use to the most fit patients [5]. Importantly, the clinical trials of cytotoxic therapies, and the vast majority of clinical trials in pancreatic cancer, exclude adenocarcinoma and other rare subsets of pancreatic cancer.

There has been an effort to develop targeted therapies for advanced PDAC, albeit with limited success. Olaparib, a polyadenosine diphosphate-ribose polymerase (PARP) inhibitor, was approved for use as maintenance therapy in patients with advanced PDAC harboring germline *BRCA1/BRCA2* mutations [6]. However, its use is limited, as *BRCA* germline alterations are only present in approximately 2% of PDAC [7].

Another target of interest in PDAC is the Kirsten rat sarcoma viral oncogene (*KRAS*) mutation, known to be a major oncogenic driver in 90% of PDAC. The predominant *KRAS* mutation, G12D, constitutes 45% of all *KRAS* mutations in PDAC but remains difficult to target, as do other common *KRAS* mutations. However, recent phase 2 trials of sotorasib and adagrasib, inhibitors of the *KRAS* G12C mutation, demonstrated a 6.9 and 8.0-month median OS, respectively, in patients with advanced previously-treated PDAC [8]. Although these inhibitors have reinvigorated efforts at targeting other *KRAS* mutations, the G12C mutation represents only 1–2% of all *KRAS* mutations in PDAC and is therefore only beneficial to a small proportion of advanced PDAC patients [9, 10].

Immunotherapy has revolutionized cancer therapeutics and ICI are now approved for all solid tumors with high MSI (MSI-H) or deficient MMR (dMMR), including advanced PDAC. However, early clinical phase trials of ICI in advanced PDAC have not been promising. This was illustrated in KEYNOTE-028 and KEYNOTE-158, two trials in which patients with a range of solid cancers, including 22 and 24 PDAC

patients, respectively, were treated with pembrolizumab. Importantly, in KEYNOTE-028, all tumors included were PD-L1 positive, while in KEYNOTE-158, they exhibited either MSI-H or dMMR. Amongst PDAC patients, both trials reported a PFS of 2.1, an OS of 3.7 to 4 months and the lowest overall response rates (ORR) of all solid cancers included in the cohorts [11, 12].

The lack of success of ICI in PDAC, as opposed to their effectiveness in other solid tumors, can partially be attributed to the distinctive tumor microenvironment, characterized by a dense desmoplastic stroma, limited vascularity and elevated levels of immunosuppressive cytokines [13]. Additionally, only 1% of PDAC are MSI-H, dMMR or TMB-high. There are, however, a few published cases of patients with advanced PDAC with progression on one or more lines of therapy who subsequently had partial or complete response to ICI. All the patients reported had either high PD-L1 expression or dMMR [14–16]. In contrast, our patient had intact MMR. Unfortunately, PD-L1 status could not be determined because the pathology slides were reviewed at our institution as a second opinion, and no additional tissue was available for PD-L1 staining.

Herein we report a case of an ASCP with intact MMR and an unknown PD-L1 status that showed a significant response to an ICI. Definitionally, ASCP requires $\geq 30\%$ of the carcinoma to demonstrate squamous differentiation, typically at the periphery and characterized by keratinization and p40 immunostaining [2]. Due to the peripheral localization and sampling bias on biopsies, it is probable that the actual occurrence rate is higher than the 1–5% reported in the literature [17].

There are no prospective studies selectively targeting ASCP, and these patients are typically treated with chemotherapy regimens similar to PDAC, though with worse outcomes [2]. Interestingly, a recent case series demonstrated PD-L1 expression in 5/6 (83%) cases of surgically resected ASCP compared to 1/34 (3%) cases of resected PDAC. All 5 demonstrated PD-L1 expression selectively within the squamous component of the tumor [18]. These results align with those reported in a study of adenocarcinoma lung carcinomas, where PD-L1 expression was 11% within the glandular component compared to 39% within the squamous component [19]. Furthermore, the tumor microenvironment of lung squamous cell carcinoma has more tumor-infiltrating

lymphocytes than lung adenocarcinoma [20]. Therefore, it is plausible that the tumor microenvironment of ASCP is drastically different than that of PDAC, that it drove the excellent response observed with pembrolizumab in our patient and that it may be a promising therapy for

ASCP. This highlights the need for studies to evaluate ICI selectively in patients with ASCP. To that point, there is an active multi-center phase 2 trial investigating outcomes and responses to ICI in patients with metastatic or unresectable ASCP or ampullary cancer [19].

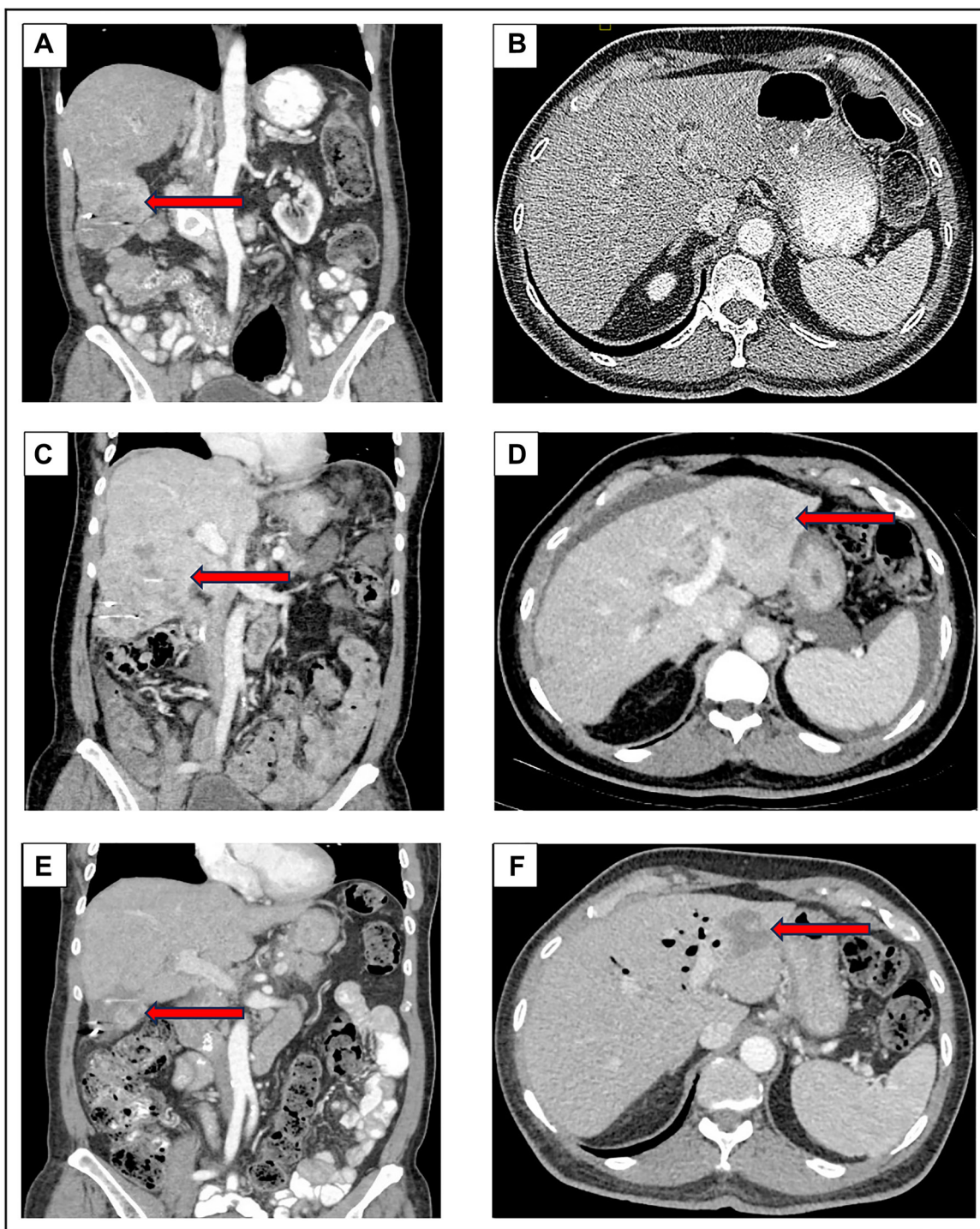


Figure 3: CT Scan on initial presentation to our institution in October 2022 (A, B) demonstrated a right lobe liver lesion measuring 8.2 cm in greatest dimension. In April 2023 (C, D), after six months of treatment with sotorasib, there was an increase in the right lobe liver lesion to 10.2 cm along with a new left lobe lesion measuring 5 cm. In July 2023 (E, F), after four cycles of pembrolizumab, the right lobe liver lesion reduced in size to 5.7 cm and the left liver lobe lesion decreased to 3.5 cm.

AUTHOR CONTRIBUTIONS

Drafting of manuscript: MA, BKL. Critical Revisions: BKL, AO, NA, AH.

CONFLICTS OF INTEREST

Authors have no conflicts of interest to declare.

ETHICAL STATEMENT

In the preparation and presentation of this case report, we adhered to the highest standards of ethical practice in protecting the patient's privacy and confidentiality and ensuring in the integrity of the information presented in the manuscript.

CONSENT

The patient's informed consent was obtained prior to the collection and composition of this case report.

FUNDING

No funding was used for this paper.

REFERENCES

1. Siegel RL, Miller KD, Wagle NS, Jemal A. Cancer statistics, 2023. *CA Cancer J Clin.* 2023; 73:17–48. <https://doi.org/10.3322/caac.21763>. [PubMed]
2. Borazanci E, Millis SZ, Korn R, Han H, Whatcott CJ, Gatalica Z, Barrett MT, Cridebring D, Von Hoff DD. Adenosquamous carcinoma of the pancreas: Molecular characterization of 23 patients along with a literature review. *World J Gastrointest Oncol.* 2015; 7:132–40. <https://doi.org/10.4251/wjgo.v7.i9.132>. [PubMed]
3. Klein-Brill A, Amar-Farkash S, Lawrence G, Collisson EA, Aran D. Comparison of FOLFIRINOX vs Gemcitabine Plus Nab-Paclitaxel as First-Line Chemotherapy for Metastatic Pancreatic Ductal Adenocarcinoma. *JAMA Netw Open.* 2022; 5:e2216199. <https://doi.org/10.1001/jamanetworkopen.2022.16199>. [PubMed]
4. National Comprehensive Cancer Network. Pancreatic Adenocarcinoma, Version 2.2024. NCCN Clinical Practice Guidelines in Oncology (NCCN Guidelines®). 2024.
5. Muranaka T, Kuwatani M, Komatsu Y, Sawada K, Nakatsumi H, Kawamoto Y, Yuki S, Kubota Y, Kubo K, Kawahata S, Kawakubo K, Kawakami H, Sakamoto N. Comparison of efficacy and toxicity of FOLFIRINOX and gemcitabine with nab-paclitaxel in unresectable pancreatic cancer. *J Gastrointest Oncol.* 2017; 8:566–71. <https://doi.org/10.21037/jgo.2017.02.02>. [PubMed]
6. Golan T, Hammel P, Reni M, Van Cutsem E, Macarulla T, Hall MJ, Park JO, Hochhauser D, Arnold D, Oh DY, Reinacher-Schick A, Tortora G, Algül H, et al. Maintenance Olaparib for Germline *BRCA*-Mutated Metastatic Pancreatic Cancer. *N Engl J Med.* 2019; 381:317–27. <https://doi.org/10.1056/NEJMoa1903387>. [PubMed]
7. Shindo K, Yu J, Suenaga M, Fesharakizadeh S, Cho C, Macgregor-Das A, Siddiqui A, Witmer PD, Tamura K, Song TJ, Navarro Almario JA, Brant A, Borges M, et al. Deleterious Germline Mutations in Patients With Apparently Sporadic Pancreatic Adenocarcinoma. *J Clin Oncol.* 2017; 35:3382–90. <https://doi.org/10.1200/JCO.2017.72.3502>. [PubMed]
8. Strickler JH, Satake H, George TJ, Yaeger R, Hollebecque A, Garrido-Laguna I, Schuler M, Burns TF, Coveler AL, Falchook GS, Vincent M, Sunakawa Y, Dahan L, et al. Sotorasib in *KRAS* p.G12C-Mutated Advanced Pancreatic Cancer. *N Engl J Med.* 2023; 388:33–43. <https://doi.org/10.1056/NEJMoa2208470>. [PubMed]
9. Bannoura SF, Khan HY, Azmi AS. *KRAS* G12D targeted therapies for pancreatic cancer: Has the fortress been conquered? *Front Oncol.* 2022; 12:1013902. <https://doi.org/10.3389/fonc.2022.1013902>. [PubMed]
10. Bekaii-Saab TS, Yaeger R, Spira AI, Pelster MS, Sabari JK, Hafez N, Barve M, Velastegui K, Yan X, Shetty A, Der-Torossian H, Pant S. Adagrasib in Advanced Solid Tumors Harboring a *KRAS*^{G12C} Mutation. *J Clin Oncol.* 2023; 41:4097–106. <https://doi.org/10.1200/JCO.23.00434>. [PubMed]
11. Marabelle A, Le DT, Ascierto PA, Di Giacomo AM, De Jesus-Acosta A, Delord JP, Geva R, Gottfried M, Penel N, Hansen AR, Piha-Paul SA, Doi T, Gao B, et al. Efficacy of Pembrolizumab in Patients With Noncolorectal High Microsatellite Instability/Mismatch Repair-Deficient Cancer: Results From the Phase II KEYNOTE-158 Study. *J Clin Oncol.* 2020; 38:1–10. <https://doi.org/10.1200/JCO.19.02105>. [PubMed]
12. Ott PA, Bang YJ, Piha-Paul SA, Razak ARA, Bennouna J, Soria JC, Rugo HS, Cohen RB, O'Neil BH, Mehnert JM, Lopez J, Doi T, van Brummelen EMJ, et al. T-Cell-Inflamed Gene-Expression Profile, Programmed Death Ligand 1 Expression, and Tumor Mutational Burden Predict Efficacy in Patients Treated With Pembrolizumab Across 20 Cancers: KEYNOTE-028. *J Clin Oncol.* 2019; 37:318–27. <https://doi.org/10.1200/JCO.2018.78.2276>. [PubMed]
13. Yoon JH, Jung YJ, Moon SH. Immunotherapy for pancreatic cancer. *World J Clin Cases.* 2021; 9:2969–82. <https://doi.org/10.12998/wjcc.v9.i13.2969>. [PubMed]
14. Lundy J, McKay O, Croagh D, Ganju V. Exceptional Response to Olaparib and Pembrolizumab for Pancreatic Adenocarcinoma With Germline *BRCA1* Mutation and High Tumor Mutation Burden: Case Report and Literature Review. *JCO Precis Oncol.* 2022; 6:e2100437. <https://doi.org/10.1200/PO.21.00437>. [PubMed]
15. Atiq S, Atiq OO, Atiq ZO, Samad S, Atiq O. A Case of Metastatic Pancreatic Adenocarcinoma in Complete Remission

- Using Chemotherapy and Immunotherapy. *Cureus*. 2021; 13:e13133. <https://doi.org/10.7759/cureus.13133>. [PubMed]
16. Zhao L, Singh V, Ricca A, Lee P. Survival Benefit of Pembrolizumab for Patients With Pancreatic Adenocarcinoma: A Case Series. *J Med Cases*. 2022; 13:240–43. <https://doi.org/10.14740/jmc3918>. [PubMed]
 17. Huang Z, Wang J, Zhang R, He A, Luo S, Wu R, Xiong J, Li M, Jin T, Li E, Wu L, Liao W. Pancreatic adenosquamous carcinoma: A population level analysis of epidemiological trends and prognosis. *Cancer Med*. 2023; 12:9926–36. <https://doi.org/10.1002/cam4.5700>. [PubMed]
 18. Tanigawa M, Naito Y, Akiba J, Kawahara A, Okabe Y, Ishida Y, Ishikawa H, Hisaka T, Fujita F, Yasunaga M, Shigaki T, Sudo T, Mihara Y, et al. PD-L1 expression in pancreatic adenosquamous carcinoma: PD-L1 expression is limited to the squamous component. *Pathol Res Pract*. 2018; 214:2069–74. <https://doi.org/10.1016/j.prp.2018.10.006>. [PubMed]
 19. Shi X, Wu S, Sun J, Liu Y, Zeng X, Liang Z. PD-L1 expression in lung adenosquamous carcinomas compared with the more common variants of non-small cell lung cancer. *Sci Rep*. 2017; 7:46209. <https://doi.org/10.1038/srep46209>. [PubMed]
 20. Chen L, Cao MF, Zhang X, Dang WQ, Xiao JF, Liu Q, Tan YH, Tan YY, Xu YY, Xu SL, Yao XH, Cui YH, Zhang X, Bian XW. The landscape of immune microenvironment in lung adenocarcinoma and squamous cell carcinoma based on PD-L1 expression and tumor-infiltrating lymphocytes. *Cancer Med*. 2019; 8:7207–18. <https://doi.org/10.1002/cam4.2580>. [PubMed]