

Correction

Correction: iASPP overexpression is associated with clinical outcome in spinal chordoma and influences cellular proliferation, invasion, and sensitivity to cisplatin *in vitro***Yunlong Ma^{1,*}, Bin Zhu^{2,*}, Xiaoguang Liu¹, Zhongjun Liu¹, Liang Jiang¹, Feng Wei¹, Miao Yu¹, Fengliang Wu¹, Hua Zhou¹, Nanfang Xu¹, Xiao Liu¹, Lei Yong¹, Yongqiang Wang¹, Peng Wang¹, Chen Liang¹ and Guanping He¹**¹Department of Orthopedics, Peking University Third Hospital, Beijing 100191, China²The Center for Pain Medicine, Peking University Third Hospital, Beijing 100191, China

*These authors contributed equally to this work

Published: June 21, 2023**Copyright:** © 2023 Ma et al. This is an open access article distributed under the terms of the [Creative Commons Attribution License](#) (CC BY 3.0), which permits unrestricted use, distribution, and reproduction in any medium, provided the original author and source are credited.

This article has been corrected: In Figure 3A, the WB images for proteins iASPP and b-actin expression in UCH-1 cells have been duplicated and flipped. In addition, in Figure 5A, which shows the data of transwell invasion assays in MUG-Chor1 and U-CH1 cells after the iASPP knockdown, the 'shRNA-CON' images for the MUG-Chor1 and U-CH1 cells accidentally overlap. The corrected Figures 3 and 5, produced using the original data, are shown below. The authors declare that these corrections do not change the results or conclusions of this paper.

Original article: Oncotarget. 2017; 8:68365–68380. <https://doi.org/10.18632/oncotarget.20190>

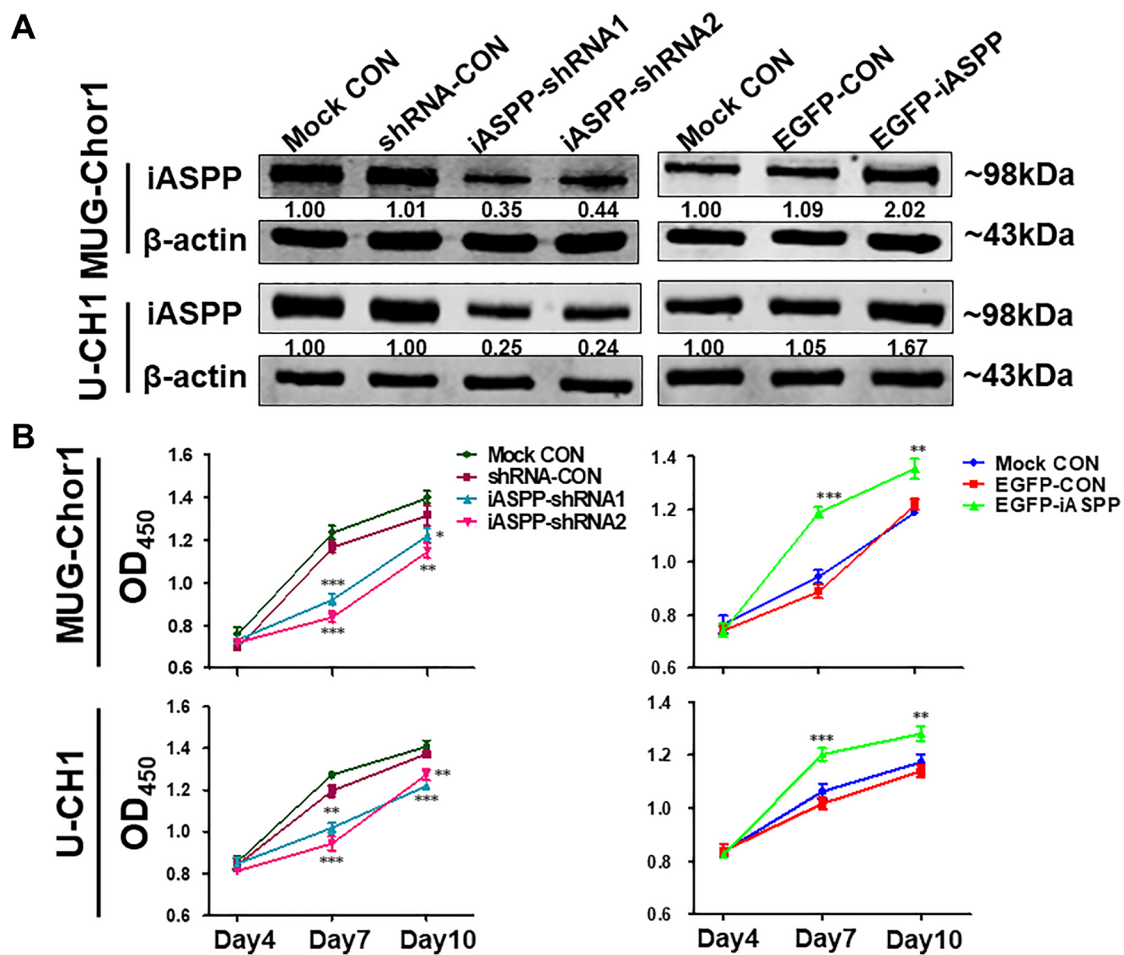


Figure 3: The extrinsic knockdown and overexpression of iASPP and their effects on cells proliferation based on CCK-8 assays. (A) The extrinsic knockdown and overexpression of iASPP in MUG-Chor1 and U-CH1 cells as identified by WB. Numbers below pictures represent semi-quantitative analysis of each line by Quantity One software. (B) Proliferation of both cells with iASPP knockdown and overexpression. $n = 3$. Mean \pm SEM. * $p < 0.05$, ** $p < 0.01$, *** $p < 0.001$, iASPP-shRNA1 group or iASPP-shRNA2 group vs. shRNA-CON group, and EGFP-iASPP group vs. EGFP-CON group. CON: control.

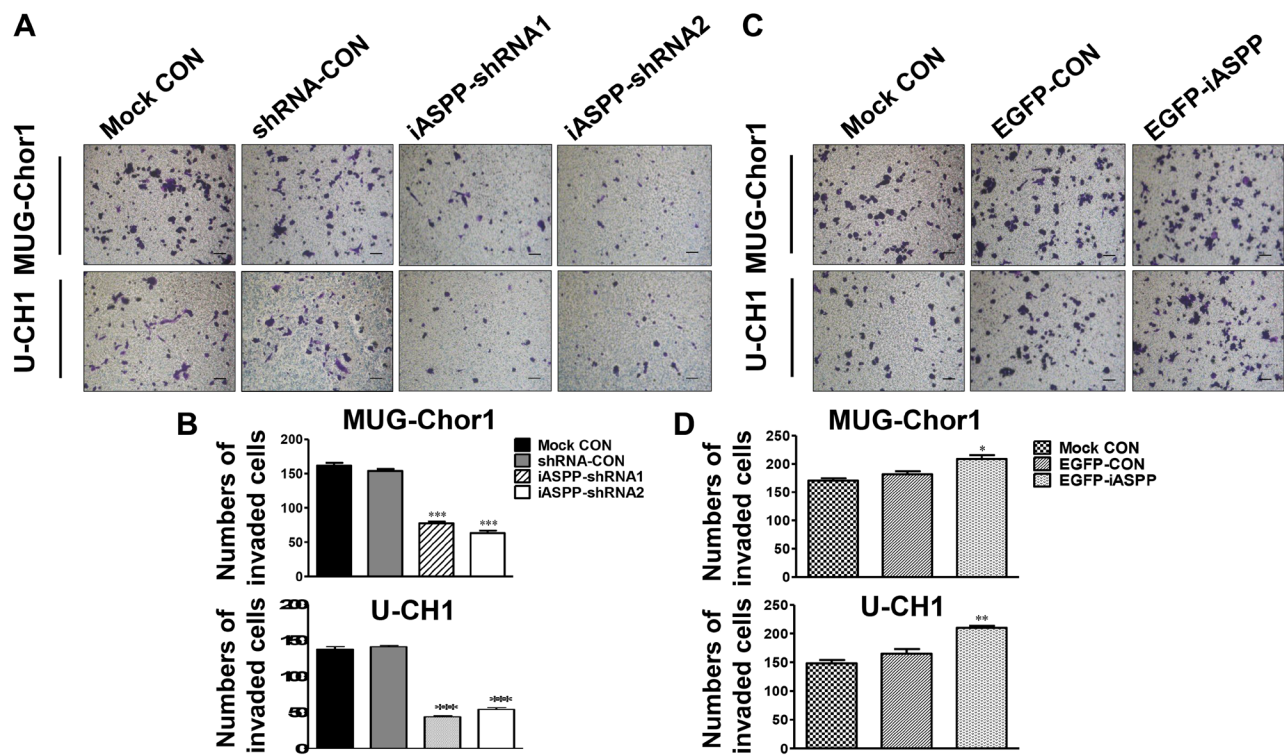


Figure 5: Effect of iASPP knockdown and overexpression on cells invasion. (A) Pictures of transwell invasion assays in MUG-Chor1 and U-CH1 cells after the iASPP knockdown with iASPP-shRNAs. (B) The number of both cells that invaded the substratum of the membrane per view under a 100× magnification after the iASPP knockdown with iASPP-shRNAs. (C) Pictures of transwell invasion assays in MUG-Chor1 and U-CH1 cells after the iASPP overexpression with EGFP-iASPP. (D) The number of both cells that invaded the substratum of the membrane per view under a 100× magnification after the iASPP overexpression with EGFP-iASPP. *n* = 3. Mean ± SEM. **p* < 0.05, ***p* < 0.01, ****p* < 0.001, iASPP-shRNA1 group or iASPP-shRNA2 group vs. shRNA-CON group, and EGFP-iASPP group vs. EGFP-CON group. CON: control. Bar scale = 100 μm.