

## Correction

## Correction: Calcitonin receptor is required for T-antigen-induced prostate carcinogenesis

Ajay Kale<sup>1</sup>, Afaf Aldahish<sup>1</sup> and Girish Shah<sup>1</sup>

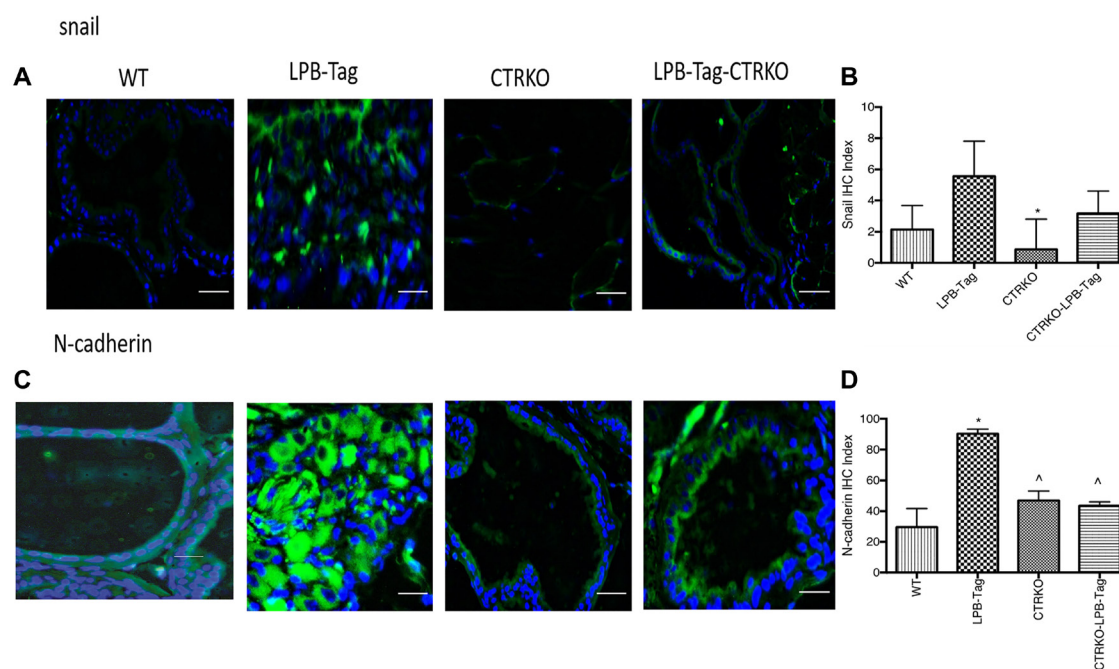
<sup>1</sup>Pharmacology, University of Louisiana College of Pharmacy, Monroe, LA 71201, USA

Published: April 14, 2023

Copyright: © 2023 Kale et al. This is an open access article distributed under the terms of the [Creative Commons Attribution License](https://creativecommons.org/licenses/by/3.0/) (CC BY 3.0), which permits unrestricted use, distribution, and reproduction in any medium, provided the original author and source are credited.

**This article has been corrected:** In Figure 9C, the first panel image (N-Cadherin staining in wild type mice) is an accidental duplicate of the third panel image in Figure 1D. The corrected Figure 9C, produced from the original data, is shown below. The authors declare that these corrections do not change the results or conclusions of this paper.

Original article: Oncotarget. 2020; 11:858–874. <https://doi.org/10.18632/oncotarget.27495>



**Figure 9: Immunoreactivity of snail and N-cadherin.** (A) Representative photomicrographs of immunofluorescence for snail in the prostate tissues of WT, CTRKO, LPB-Tag and LPB-Tag-CTRKO mice. Green staining represents snail activity while blue staining represents the DAPI at 40× magnification; Scale bar 100 μm. (B) Figure represents mean IHC staining index for snail immunofluorescence observed in the prostate tissues of WT, CTRKO, LPB-Tag and LPB-Tag-CTRKO mice; \*represents significantly different than LPB-Tag;  $p < 0.05$ . (C) Representative photomicrographs of immunofluorescence for N-cadherin in the prostate tissues of WT, CTRKO, LPB-Tag and LPB-Tag-CTRKO mice. Green staining represents N-cadherin activity while blue staining represents the DAPI at 40× magnification; Scale bar 100 μm. (D) Figure represents mean IHC staining index for the N-cadherin immunofluorescence observed in the prostate tissues of WT, CTRKO, LPB-Tag and LPB-Tag-CTRKO mice; \*represents significantly different than WT and ^represents significantly different than LPB-Tag;  $p < 0.05$ .