

Correction: Increased expression of long non-coding RNA CCEPR is associated with poor prognosis and promotes tumorigenesis in urothelial bladder carcinoma

Yonghao Zhan^{1,2,*}, Yifan Li^{1,*}, Bao Guan^{1,*}, Xiaoying Chen^{1,2}, Zhicong Chen^{1,2}, Anbang He^{1,2}, Shiming He¹, Yanqing Gong¹, Ding Peng¹, Yuchen Liu^{1,2}, Zhiming Cai^{1,2}, Xuesong Li¹ and Liqun Zhou¹

¹Department of Urology, Peking University First Hospital, The Institute of Urology, Peking University, National Urological Cancer Centre, Beijing, 100034, China

²Department of Urology, State Engineering Laboratory of Medical Key Technologies Application of Synthetic Biology, Key Laboratory of Medical Reprogramming Technology, Shenzhen Second People's Hospital, The First Affiliated Hospital of Shenzhen University, Shenzhen, 518035, China

*These authors have contributed equally to this work

Published: March 21, 2023

Copyright: © 2023 Zhan et al. This is an open access article distributed under the terms of the [Creative Commons Attribution License](https://creativecommons.org/licenses/by/3.0/) (CC BY 3.0), which permits unrestricted use, distribution, and reproduction in any medium, provided the original author and source are credited.

This article has been corrected: In Figure 6A, the 4 upper left panel images under the '5637' heading were mistakenly selected from the wrong files. The corrected Figure 6A, obtained using the original data, is shown below. The authors declare that these corrections do not change the results or conclusions of this paper.

Original article: Oncotarget. 2017; 8:44326–44334. <https://doi.org/10.18632/oncotarget.17872>

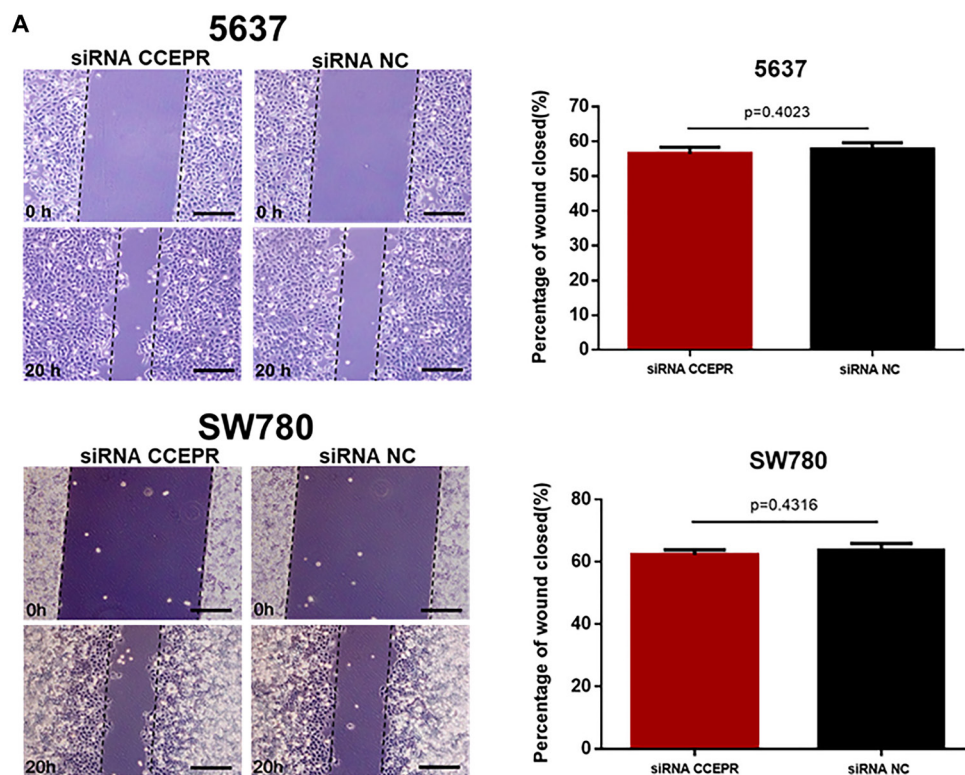


Figure 6: The effect of CCEPR on bladder cancer cell metastasis. (A and B) There was no significant difference in the migratory ability of bladder cancer cells transfected with corresponding specific siRNA/pcDNA3.1. (C and D) There was no significant difference in the invasive ability of bladder cancer cells transfected with corresponding specific siRNA/pcDNA3.1. Data are shown as mean \pm SD. * $p < 0.05$; ** $p < 0.01$.