

Correction

Correction: Selective killing of gastric cancer cells by a small molecule via targeting TrxR1 and ROS-mediated ER stress activation

Weiqian Chen^{1,2,*}, Peng Zou^{1,3,*}, Zhongwei Zhao², Qiaoyou Weng², Xi Chen¹, Shilong Ying¹, Qingqing Ye¹, Zhe Wang¹, Jiansong Ji² and Guang Liang¹

¹Chemical Biology Research Center, School of Pharmaceutical Sciences, Wenzhou Medical University, Wenzhou, Zhejiang, 325035, China

²Department of Interventional Radiology, The Fifth Affiliated Hospital of Wenzhou Medical University, Lishui, Zhejiang, 323000, China

³School of Environmental and Biological Engineering, Nanjing University of Science and Technology, Nanjing, Jiangsu, 210094, China

*These authors have contributed equally to this work

Published:

Copyright: © 2021 Chen et al. This is an open access article distributed under the terms of the [Creative Commons Attribution License](https://creativecommons.org/licenses/by/3.0/) (CC BY 3.0), which permits unrestricted use, distribution, and reproduction in any medium, provided the original author and source are credited.

This article has been corrected: Due to errors during figure preparation, the GAPDH image in Figure 2C for KATOIII cells is an accidental duplicate of the GAPDH image in Figure 4C. The corrected Figure 2, obtained using the original data, is shown below. The authors declare that these corrections do not change the results or conclusions of this paper.

Original article: Oncotarget. 2016; 7:16593–16609. <https://doi.org/10.18632/oncotarget.7565>

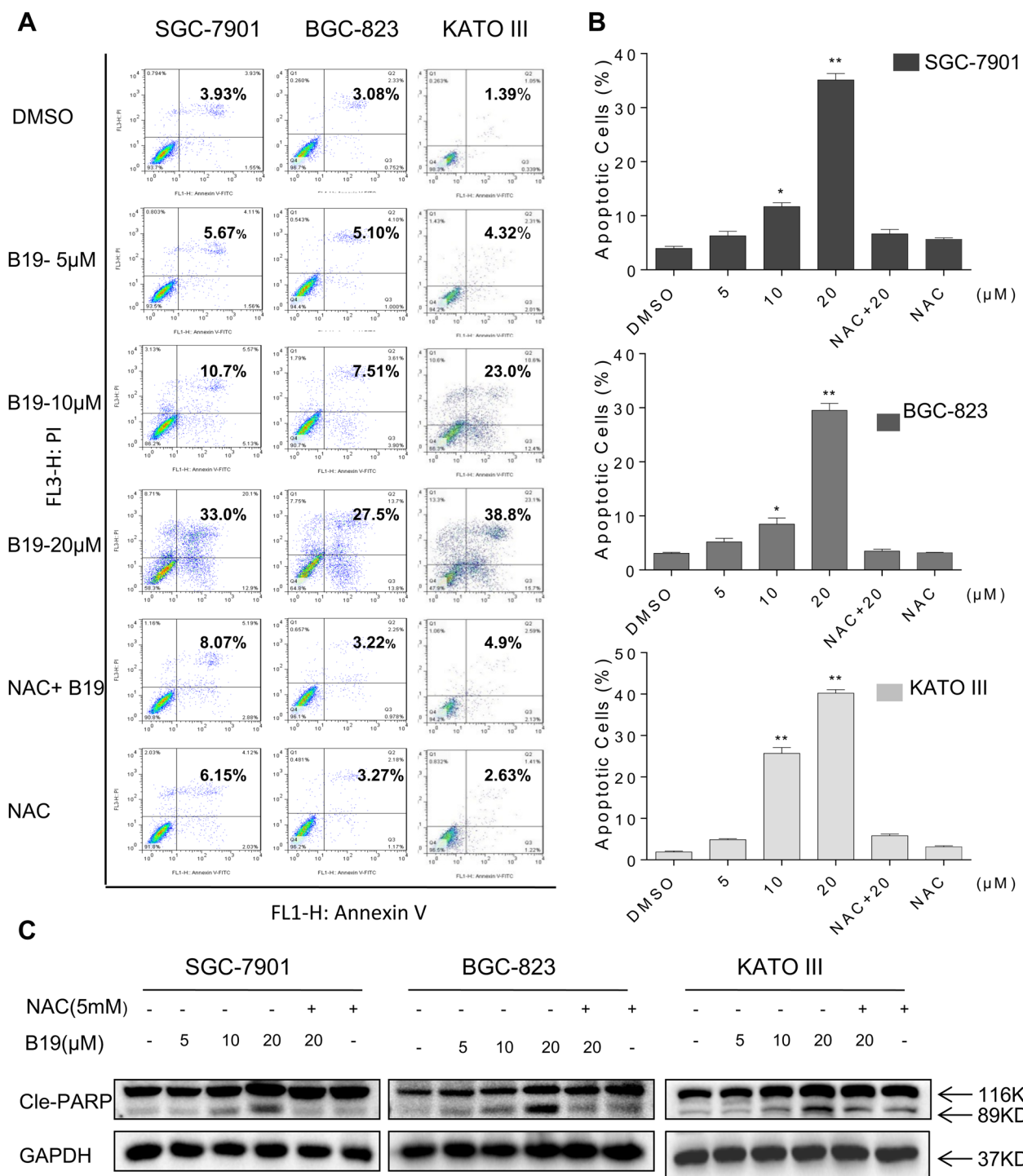


Figure 2: B19 induces ROS-dependent apoptosis in human gastric cancer cells. (A) SGC-7901, BGC-823 or KATO III cells were pre-incubated with or without 5 mM NAC for 2 h before exposure to B19 at the indicated concentrations for 24 h. Percentage of cell apoptosis was determined by Annexin-V/PI staining and flow cytometry. Similar results were obtained in three independent experiments. (B) The percentage of apoptotic cells in the treatment groups was calculated. (C) Three gastric cancer cells were pre-incubated with or without 5 mM NAC for 2 h before exposure to B19 at indicated concentration for 24 h, the Cle-PARP expression were determined by western blot. GAPDH was used as internal control. All data here are expressed as means \pm S.D. of triplicates. All images shown here are representative of three independent experiments with similar results. Error bars represent S.E.M. of triplicates (* $P < 0.05$, ** $p < 0.01$).