

Correction: Changes in the cellular immune system and circulating inflammatory markers of stroke patients

Chao Jiang^{1,2,*}, Weixia Kong^{3,*}, Yuejuan Wang¹, Wendy Ziai^{2,4}, Qingwu Yang⁵, Fangfang Zuo¹, Fangfang Li¹, Yali Wang¹, Hongwei Xu⁶, Qian Li², Jie Yang², Hong Lu⁷, Jiewen Zhang⁸ and Jian Wang^{1,2}

¹Department of Neurology, The Fifth Affiliated Hospital of Zhengzhou University, Zhengzhou, Henan, China

²Department of Anesthesiology/Critical Care Medicine, Johns Hopkins University, School of Medicine, Baltimore, MD, USA

³Department of Ultrasonography, The Fifth Affiliated Hospital of Zhengzhou University, Zhengzhou, Henan, China

⁴Department of Neurology, Johns Hopkins University, School of Medicine, Baltimore, MD, USA

⁵Department of Neurology, Xinqiao Hospital, Third Military Medical University, Chongqing, China

⁶Department of Radiology, The Fifth Affiliated Hospital of Zhengzhou University, Zhengzhou, Henan, China

⁷Department of Neurology, The First Affiliated Hospital of Zhengzhou University, Zhengzhou, Henan, China

⁸Department of Neurology, People's Hospital of Zhengzhou University, Zhengzhou, Henan, China

*These authors have contributed equally to this work

Published:

Copyright: © 2020 Jiang et al. This is an open access article distributed under the terms of the [Creative Commons Attribution License](#) (CC BY 3.0), which permits unrestricted use, distribution, and reproduction in any medium, provided the original author and source are credited.

This article has been corrected: After a careful check of the raw data, the authors found that incorrect images of flow cytometry were used in all 16 panels of Figure 2. The corrected Figure 2, obtained using the original data, is shown below. The authors declare that these corrections do not change the results or conclusions of this paper.

Original article: Oncotarget. 2017; 8:3553–3567. <https://doi.org/10.18632/oncotarget.12201>

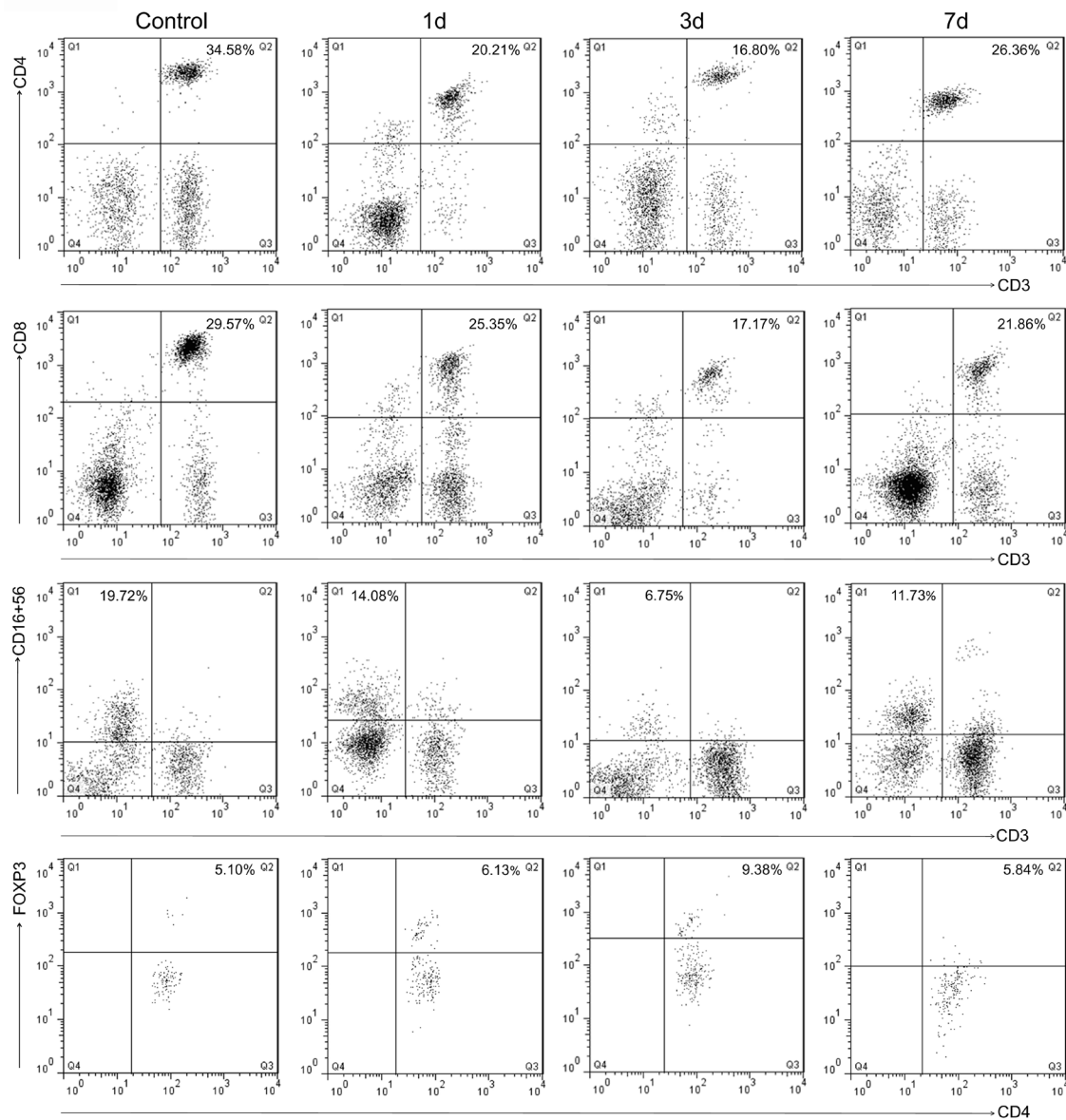


Figure 2: Representative flow cytometric analyses of blood lymphocyte subpopulations in control subjects and in patients with ischemic stroke on days 1, 3 and 7: Th cells (CD3⁺CD4⁺), cytotoxic T cells (CD3⁺CD8⁺), NK cells (CD16⁺CD56⁺), and Treg cells (CD4⁺CD25⁺FoxP3⁺).