

## Correction: Metabolic pathway for the universal fluorescent recognition of tumor cells

Ana Fernandez-Carrascal<sup>1,\*</sup>, Manuel Garcia-Algar<sup>1,\*</sup>, Moritz Nazarenus<sup>1</sup>, Alicia Torres-Nuñez<sup>1</sup>, Luca Guerrini<sup>1</sup>, Neus Feliu<sup>2,3</sup>, Wolfgang J. Parak<sup>3</sup>, Eduardo Garcia-Rico<sup>4</sup> and Ramon A. Alvarez-Puebla<sup>1,5</sup>

<sup>1</sup>Department of Physical Chemistry and EMaS, Universitat Rovira i Virgili, Tarragona, Spain

<sup>2</sup>Karolinska Institutet, Stockholm, Sweden

<sup>3</sup>Philipps-Universität Marburg, Fachbereich Physik, Marburg, Germany

<sup>4</sup>Department of Medical Oncology, Hospital Universitario HM Torrelodones, Torrelodones, Madrid, Spain

<sup>5</sup>ICREA, Barcelona, Spain

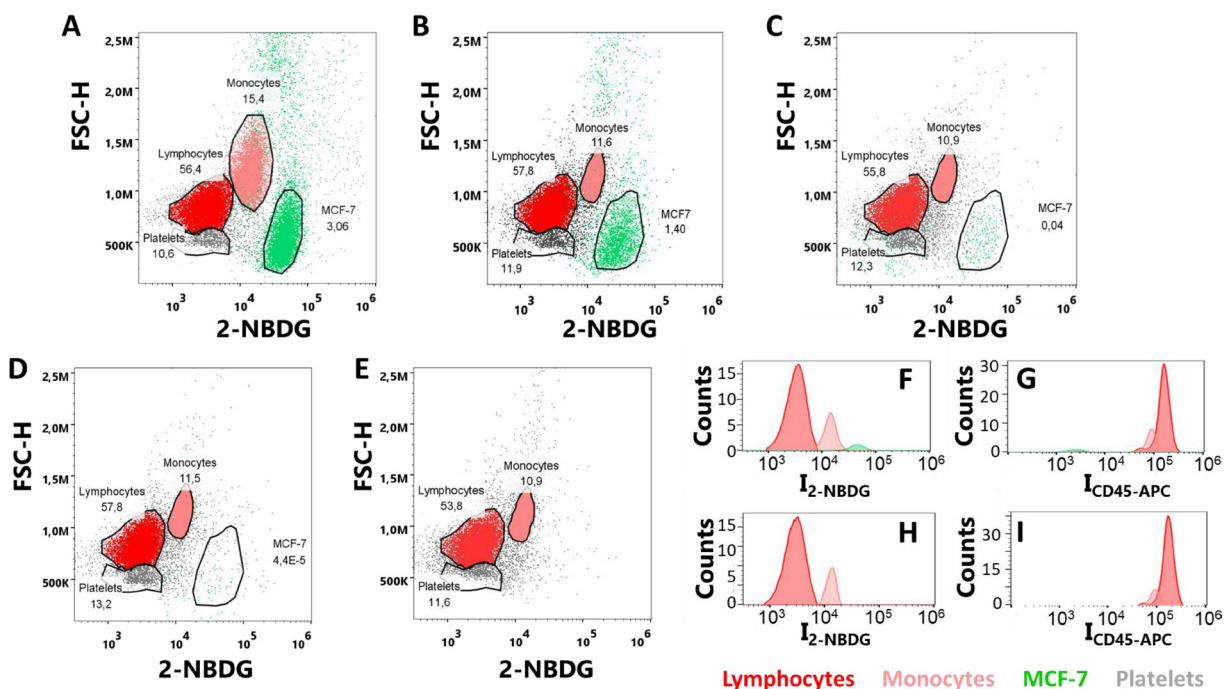
\*These authors have contributed equally to this work

Published: November 12, 2019

**Copyright:** Fernandez-Carrascal et al. This is an open-access article distributed under the terms of the Creative Commons Attribution License 3.0 (CC BY 3.0), which permits unrestricted use, distribution, and reproduction in any medium, provided the original author and source are credited.

**This article has been corrected:** Due to errors in figure preparation, panels A and B of Figure 4 were accidentally duplicated. The corrected Figure 4 is shown below. The authors declare that these corrections do not change the results or conclusions of this paper.

Original article: Oncotarget. 2017; 8:76108–76115. <https://doi.org/10.18632/oncotarget.18551>



**Figure 4:** (A–E) Flow cytometry plots of MCF-7 and PBMCs samples with cell ratios (A) 1:10, (B) 1:100, (C) 1:1000, (D) 1:10000 and (E) only PBMCs; upon incubation with 2-NBDG and CD45-APC for 30 minutes under hyperoxia conditions. (F–I) Distributions of fluorescence intensities for (F) 2-NBDG and (G) CD45-APC, in a sample with a 1:1000 MCF-7:PBMC ratio; and (H) 2-NBDG and (I) CD45-APC, in a sample of PBMC. Over 10<sup>6</sup> single-cell events were collected for each experiment.