

## Correction: Regulation of E-cadherin localization by microtubule targeting agents: rapid promotion of cortical E-cadherin through p130CAS/Src inhibition by eribulin

Nicholas F. Dybdal-Hargreaves<sup>1</sup>, April L. Risinger<sup>1,2</sup> and Susan L. Mooberry<sup>1,2</sup>

<sup>1</sup> Department of Pharmacology, University of Texas Health Science Center at San Antonio, San Antonio, Texas, USA

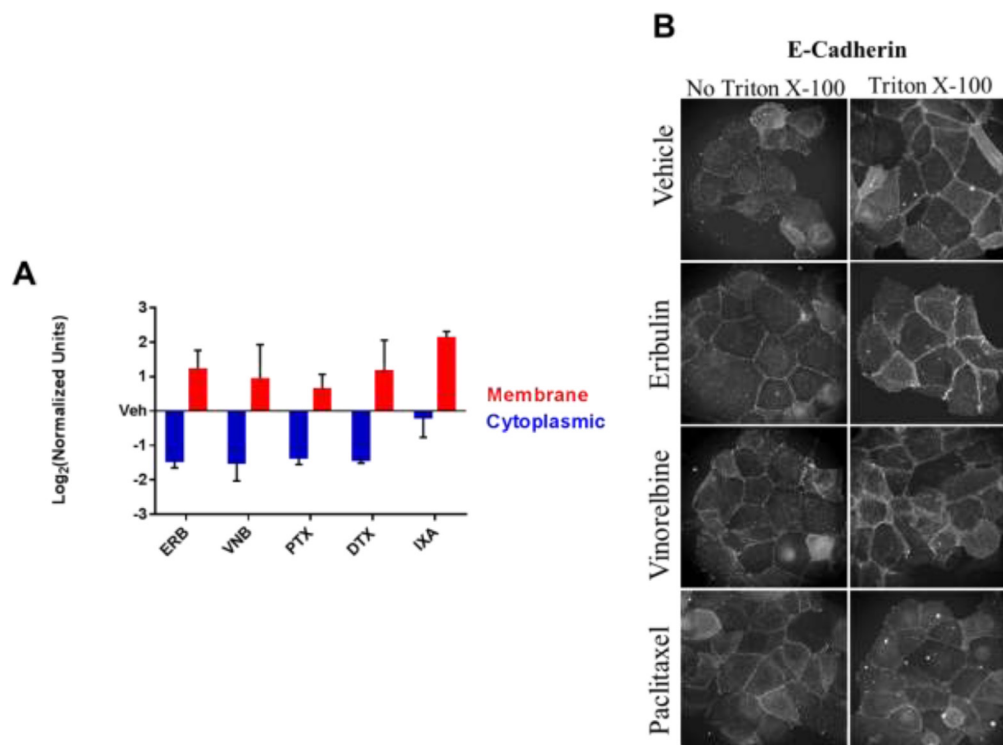
<sup>2</sup> UT Health Cancer Center, University of Texas Health Science Center at San Antonio, San Antonio, Texas, USA

Published: July 23, 2019

**Copyright:** Dybdal-Hargreaves et al. This is an open-access article distributed under the terms of the Creative Commons Attribution License 3.0 (CC BY 3.0), which permits unrestricted use, distribution, and reproduction in any medium, provided the original author and source are credited.

**This article has been corrected:** The authors recently became aware that the antibody used for Figure 5B was inappropriate to address the ability of E-cadherin to be accessible from the extracellular space in the absence of Triton X permeabilization. The E-cadherin antibody, DECMA-1 from EMD Millipore (Cat. # MABT26) which has the ability to block E-cadherin-associated cell adhesion, is appropriate to address this question. Multiple experiments were conducted with the DECMA-1 antibody in the presence and absence of Triton X permeabilization. New pictures were taken, and a revised Figure 5B using these new images is shown below. A revised Supplementary Table 1 with a list of the antibodies used for each figure is also shown. The authors declare that these corrections do not change the results or conclusions of this paper.

Original article: 2017; 9:5545–5561. <https://doi.org/10.18632/oncotarget.23798>



**Figure 5: The effect of MTAs on the subcellular distribution of E-cadherin.** **A.** Membrane and cytoplasmic-enriched lysates of HCC1937 cells treated for 2 hours with vehicle or MTAs were prepared and analyzed by immunoblotting. Quantification of E-cadherin in the cytoplasmic and membrane-enriched fractions as compared to vehicle.  $N = 3 \pm$  SEM. **B.** HCC1937 cells were prepared for indirect immunofluorescence with or without Triton X-100 permeabilization following 4% paraformaldehyde fixation. Arrows indicate E-cadherin ridges between cells in the absence of Triton X-100. Images are composed of non-deconvolved stacks.

**Supplementary Table 1: Antibody Vendors and Applications**

Host-Target	Vendor Information	Host	Figures Used	Application-Dilutions*
E-cadherin	3195S, Cell Signaling	Rabbit	3, 4, 6, 7, S5, S6, S7, S8	IF- 1:400 W- 1:1000
E-cadherin	DECMA-1, EMD Millipore	Rat	5	IF-1:400
GAPDH	5174S, Cell Signaling	Rabbit	6, S5, S7	W- 1:1000
$\beta$ -tubulin	ab6046, Abcam	Rabbit	3	W- 1:1000
$\beta$ -tubulin	T-4026, Sigma Aldrich	Mouse	1, 2, S1, S2, S3, S4, S8	IF- 1:400
E-cadherin	5296S, Cell Signaling	Mouse	9, 10, S11	IF- 1:400
Flotillin	BD Bioscience	Mouse	S7	W- 1:1000
Golgin97	A21270, Invitrogen	Mouse	S5	IF-1:200
p130Cas	ab31831, Abcam	Mouse	6, 8, S9	IF- 1:400 W- 1:1000 IP- 2 $\mu$ g
P-Y418 Src	ab4816, Abcam	Rabbit	6, 7, 8, 9, 10, S4, S10	IF- 1:500
Src	Sc-19, Santa Cruz Biotechnology	Rabbit	8, S9	W- 1:1000

\*IF- Indirect Immunofluorescence, W- Western Blotting, IP- Immunoprecipitation.