

Differential β_2 -adrenergic receptor expression defines the phenotype of non-tumorigenic and malignant human breast cell lines

Lucía Gargiulo^{1,*}, Sabrina Copsel^{1,2,*}, Ezequiel M. Rivero¹, Céline Galés³, Jean-Michel Sénard³, Isabel A. Lüthy¹, Carlos Davio^{2,*}, Ariana Bruzzone^{1,*}

¹Instituto de Biología y Medicina Experimental-CONICET, Vuelta de Obligado 2490, C1428ADN, CABA, Argentina

²Laboratorio de Farmacología de Receptores, Departamento de Farmacología, Facultad de Farmacia y Bioquímica, Universidad de Buenos Aires, Junín 956 (1113) CABA, Argentina

³Institut des Maladies Métaboliques et Cardiovasculaires, Institut National de la Santé et de la Recherche Médicale, U1048, Université Toulouse III Paul Sabatier, F-31432 Toulouse, France

*These authors contributed equally to this work

Correspondence Author:

Ariana Bruzzone, e-mail: ariana.bruzzone@ibyme.conicet.gov.ar

Keywords: human breast cancer cells, non-tumorigenic breast cells, epinephrine, adrenergic receptors.

Received: June 17, 2014

Accepted: September 06, 2014

Published: November 07, 2014

ABSTRACT

Breast cancer is the most frequent malignancy in women. Several reports demonstrated that adrenergic receptors (ARs) are involved in breast cancer. Here we observed that epinephrine (Epi), an endogenous AR agonist, caused opposite effects in non-tumorigenic (MCF-10A and HBL-100) and tumor cells (MCF-7 and MDA-MB-231). Thus, Epi, in non-tumor breast cells, as well as isoproterenol (β -agonist), in all cell lines, maintained a benign phenotype, decreasing cell proliferation and migration, and stimulating cell adhesion. β -AR expression and cAMP levels were higher in MCF-10A than in MCF-7 cells. β_2 -AR knock-down caused a significant increase of cell proliferation and migration, and a decrease of cell adhesion both in basal and in Iso-stimulated conditions. Coincidentally, β_2 -AR over-expression induced a significant decrease of cell proliferation and migration, and an increase of cell adhesion. Therefore, β_2 -AR is implied in cell phenotype and its agonists or antagonists could eventually complement cancer therapy.

INTRODUCTION

Breast cancer is the most frequent malignancy in women worldwide, accounting for 23% of cancers in women, and the main cause of cancer death in women in both developing and developed countries. In USA, however, lung cancer has surpassed breast cancer mortality in women around 1990 [1, 2]. The molecular profiling of different subtypes of breast cancer greatly improved treatments and outcomes for patients [3].

Stress response is mediated primarily by the hypothalamic-pituitary-adrenocortical axis and the autonomic nervous system [4]. Epinephrine (Epi, also known as adrenaline) and Norepinephrine (NEpi, or noradrenaline) are classic neurotransmitters that mediate stress responses from the autonomic nervous system (a mechanism usually stated as “fight or flight” response).

These catecholamines bind to three types of adrenergic receptors (ARs), subdivided in 9 different subtypes: α_{1A} , α_{1B} , α_{1D} , α_{2A} , α_{2B} , α_{2C} , β_1 , β_2 , β_3 [5]. ARs belong to the G protein-coupled receptors (GPCRs), which regulate several physiological and pathological conditions. The stimulation of β_2 -AR leads to Gs-dependent adenylyl cyclase activation and cAMP production which activates protein kinase A (PKA) and exchange protein directly activated by cAMP (Epac). Also, desensitization of β_2 -AR is mediated by GPCR kinase-dependent phosphorylation, followed by the recruitment of β -arrestins, independent signal transducers [6].

The β -AR pathway has been implied in different processes of cancer initiation and progression [7]. It has been previously shown both by us and other researchers, that β -AR stimulation was associated to an inhibition of cancer cell proliferation and tumor growth [8–10].

However, β -blockers showed a similar inhibition of these parameters [11]. In addition, breast cancer cell motility is modified by adrenergic compounds in a cell-context manner, either enhancing or inhibiting this parameter [12, 13]. Our group has recently investigated the effect of the β -agonist isoproterenol (Iso) in non-tumorigenic human breast MCF-10A cells. Iso significantly diminished cell proliferation by a β_2 -AR/Gs/cAMP/PKA/Erk1/2 pathway and also caused a significant enhancement of cell adhesion mediated mainly by β_2 -AR/Gs/cAMP/Epac [14]. In the last decades, β -ARs have gained great importance in breast cancer treatment due to β -blockers, mainly propranolol, being used in the treatment of patients with very promising outputs [15, 16].

Altogether, these previous findings encouraged us to study the role of β -AR in cell proliferation, adhesion and migration, key processes of tumor progression. For this purpose, tumor (MCF-7 and MDA-MB-231) and non-tumorigenic (MCF-10A and HBL-100) human breast cell lines were used. Both tumor cell lines were selected because they represent opposite breast cancer phenotypes. MCF-7 as a luminal A model, that accounts for more than 30% of breast cancer patients, and MDA-MB-231, previously considered basal-like, but now reclassified within the claudin-low subtype, corresponds to around 10% of breast tumors [17]. Our study demonstrated for the first time that β_2 -AR expression is implicated in breast cell phenotype, suggesting that this receptor might be an important indicator of cell malignancy and consequently of tumor progression.

RESULTS

As epinephrine (Epi) is the endogenous AR ligand that binds to all ARs, we assessed its action on different parameters linked to breast cancer progression, such as proliferation, adhesion and migration. Cell proliferation was measured by [³H]-Thymidine incorporation in non-tumorigenic MCF-10A and HBL-100 cell lines, and in breast tumor cell lines MCF-7 and MDA-MB-231 (Figure 1A). Both Epi concentrations (1 nM and 1 μ M) caused a significant inhibition of cell proliferation in the non-tumorigenic cells, whereas it significantly increased cell proliferation at a concentration of 1 μ M in the cancer cells. We previously demonstrated in several human breast cell lines that Epi induced proliferation through α_2 -AR stimulation [9, 18]. On the other hand, Isoproterenol (Iso), a β -AR agonist, significantly decreased cell proliferation in every cell line ($p < 0.01$, Figure 1B).

The effect of adrenergic compounds on cell adhesion was next evaluated by quantifying the percentage of cells remaining adherent to the plastic dishes following a specific cell detachment treatment as described in *Materials and Methods*. In non-tumorigenic breast cells MCF-10A, treatment with Epi resulted in a large and significant increase in the proportion of adhesive cells

(Figure 2A). As Epi binds to α_2 and to β -AR, which have been described in both tumor and non-tumorigenic breast cell lines [14, 18, 19], an agonist of each receptor type was also used in order to identify through which receptor Epi exerts this action. The significant increase of cell adhesion caused by Epi in non-tumorigenic cells at both concentrations was mimicked by the treatment with the β -adrenergic agonist Iso ($p < 0.01$), but not by the α_2 -adrenergic agonist Dexmedetomidine (Dex) (Figure 2A). Similar results were observed in the non-tumorigenic breast cell line HBL-100 (Figure 2C). Coincidentally with this finding, in MCF-10A cells, 1 μ M Epi and Iso significantly inhibited cell migration (Figure 2B). In HBL-100 cells, Iso caused a significant decrease of cell migration, although no significant differences were observed with Epi treatment. In addition, Dex had no effect in either cell line on attachment or migration (Figure 2A-D).

In MCF-7 cells, Iso caused a moderate though significant increase in cell adhesion ($p < 0.001$, Figure 2E), with a coincident inhibition of cell migration ($p < 0.05$, Figure 2F). However, even if no effect on cell adhesion was evident in the presence of Epi or Dex in MCF-7 cells (Figure 2E), the lower concentration of Epi as well as Dex significantly increased cell migration (Figure 2F). In MDA-MB-231 cells the effects of Iso and Dex were opposite, and therefore, Epi which binds to both kinds of receptor showed no differences in cell adhesion (Figure 2G). In these cells, cell migration was significantly increased by Dex treatment (Figure 2H).

So far, we demonstrated an inhibition of cell proliferation and migration and an increase of adhesion when the non-tumor and tumor cells were incubated with Iso. Due to the previously mentioned importance of β -AR in cancer biology and our results, we next focused particularly on this receptor. Since the stimulation of β -AR causes an increase in cAMP levels, we determined its levels after 1 μ M Iso treatment. Intracellular cAMP levels were studied in all cell lines in the presence or absence of the phosphodiesterase (PDE) inhibitor 3-isobutylmethylxanthine (IBMX) (Figure 3A and B). Without IBMX, the peak concentration was coincident at 2.5 minutes. However, the non-tumorigenic breast cell lines, MCF-10A and HBL-100, exhibited higher levels of cAMP than the cancer MCF-7 and MDA-MB-231 cells (Figure 3A). When the total area under the curves was evaluated with or without IBMX, non-tumorigenic cells exhibited higher cAMP levels than tumor cell lines (Figure 3B). As MCF-10A and MCF-7 cells are suitable models of non-tumorigenic and tumor cell lines respectively, and they showed the highest cAMP levels within each group, they were chosen for further experiments.

In order to explain the results shown in Figure 1 and 2, where Epi acts differentially in non-tumor vs tumor breast cell lines, we determined the number of β -AR in MCF-10A and MCF-7 cells by binding assays. The β -AR

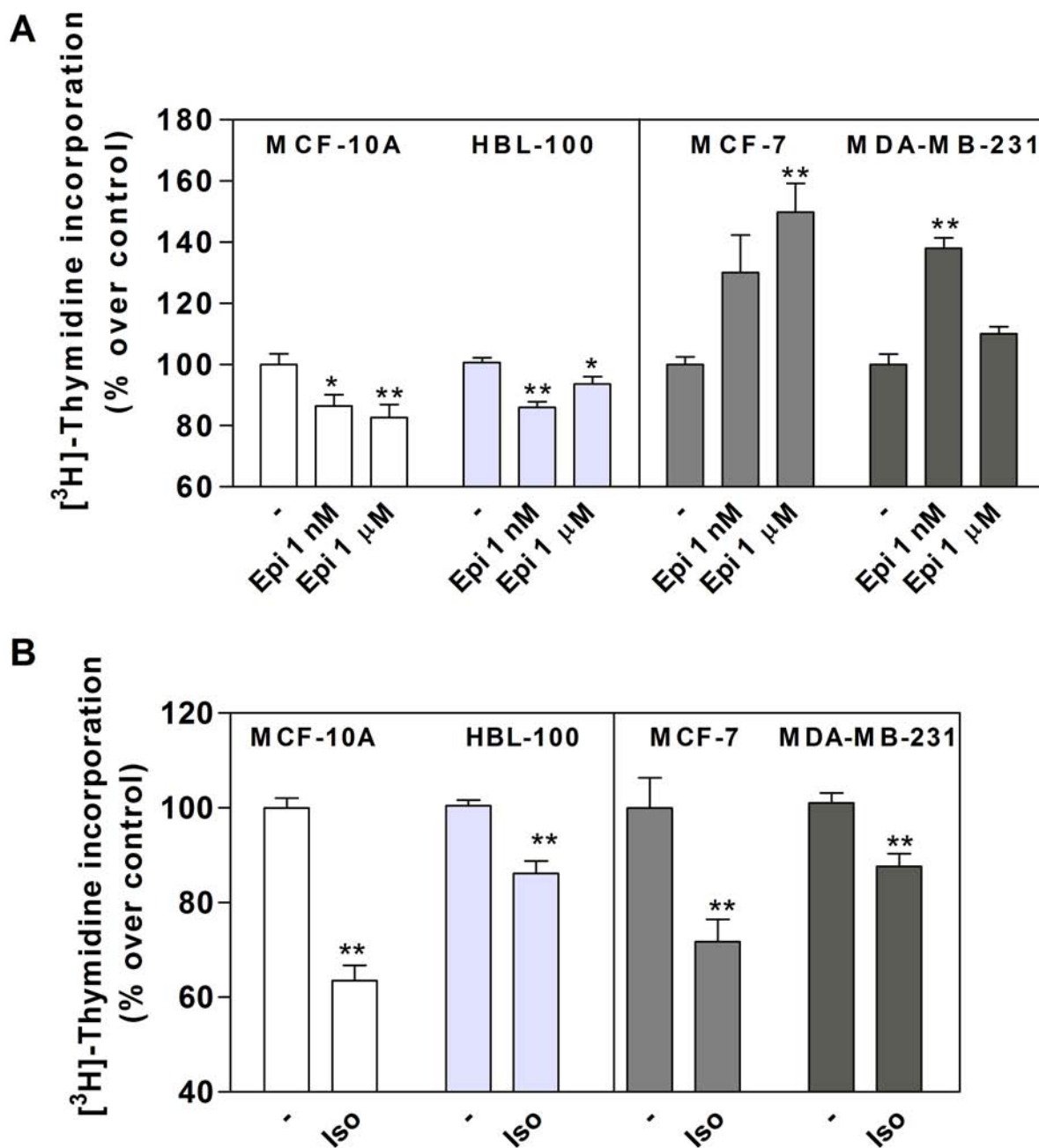


Figure 1: Effect of epinephrine (Epi) and isoproterenol (Iso) on MCF-10A, HBL-100, MCF-7 and MDA-MB-231 cell proliferation. (A) Cells were stimulated or not (-) with 1 nM or 1 μM Epi or (B) 1 μM Iso and cell proliferation was evaluated by DNA synthesis using [³H]-Thymidine incorporation assay. The values are expressed as a percentage of the control in the absence of agonists. Data represent the mean ± s.e.m. of three independent experiments. Statistical significance was assessed using (A) ANOVA followed by a Dunnett's test or (B) unpaired Student's t-test. * p<0.05, **p<0.01.

levels were higher in MCF-10A than in MCF-7 cells (MCF-10A: $132 \pm 21 \times 10^3$ vs MCF-7: $80 \pm 5.5 \times 10^3$ sites/cell, $p < 0.05$). Furthermore, we previously reported the number of α_2 -binding sites/cell was higher in MCF-7 than in MCF-10A (MCF-7: $103 \pm 23 \times 10^3$ vs MCF-10A: $19 \pm 3.5 \times 10^3$ sites/cell) [18].

To evaluate β -AR desensitization, we studied the ability of this receptor to continue producing cAMP after

a stimulus. Cells were incubated at different times in the presence of 1 μM Iso (without IBMX) washed with cold PBS and re-stimulated for 10 minutes (with IBMX). cAMP levels were then measured [20]. No differences were found in desensitization between both cell lines (Figures 3C and D). These results confirm that the higher cAMP levels observed in MCF-10A compared with MCF-7 cells (Figure 3A) were due to the differences in β -AR

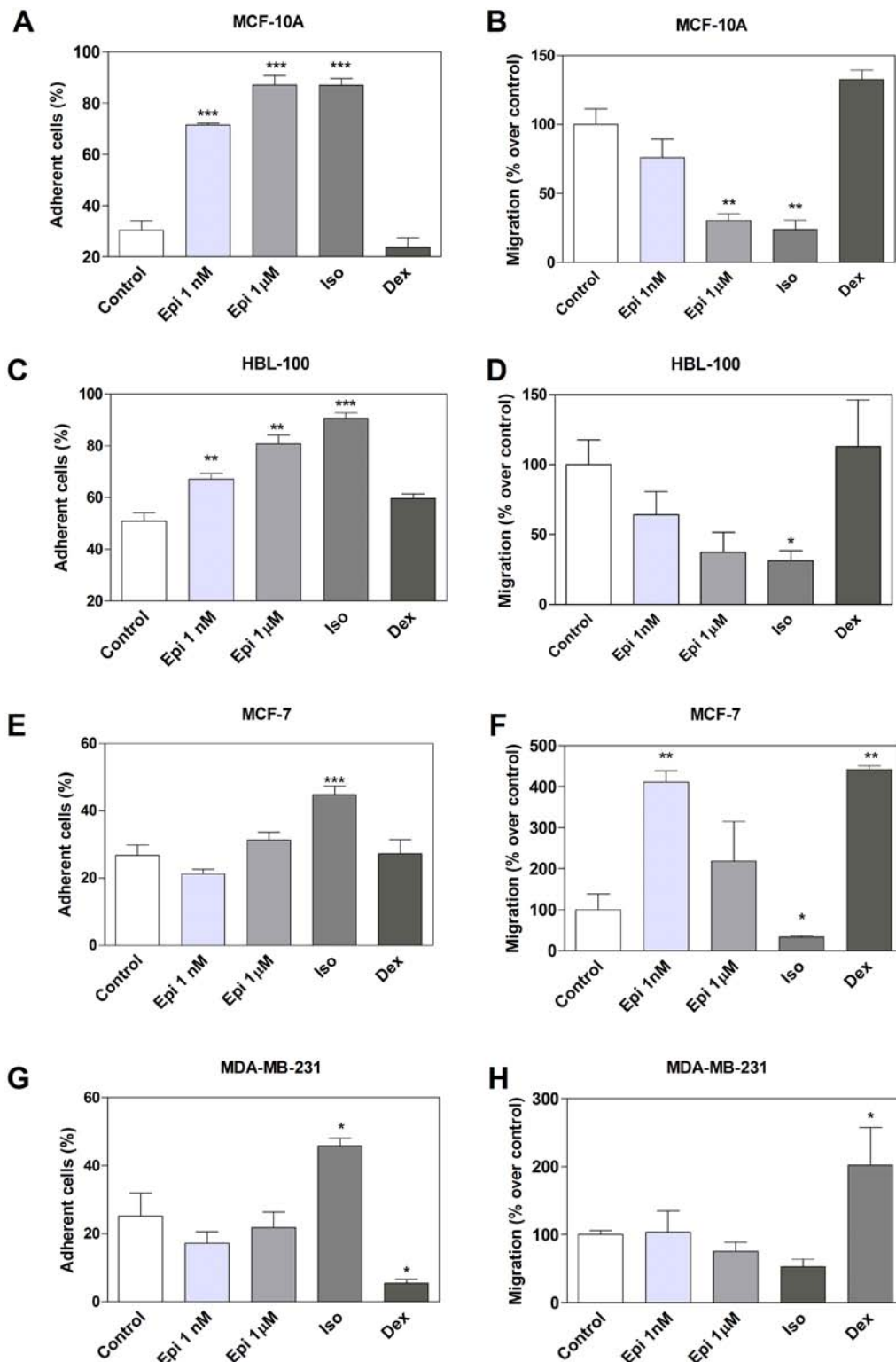


Figure 2: Effect of adrenergic compounds on cell adhesion and migration in MCF-10A, HBL-100, MCF-7 and MDA-MB-231 cells. (A, C, E and G) Cells were stimulated or not (Control) for 15 min with 1 nM or 1 μM epinefrine (Epi), 1 μM isoproterenol (Iso, β-AR agonist) and 1 μM dexmedetomidine (Dex, α₂-AR agonist) and treated with the specific cell detachment buffer as described in the *Materials and Methods* section. Results are expressed as the percentage of cell number remaining adherent to the plastic dishes following specific cell detachment treatment. (B, D, F and H) Cell migration was measured by transwell assay treated during 16 hs with the same drugs as before. Data represent the mean ± s.e.m. of three independent experiments. Statistical significance was assessed using ANOVA followed by a Dunnett's test. * p<0.05, **p<0.01, ***p<0.001.

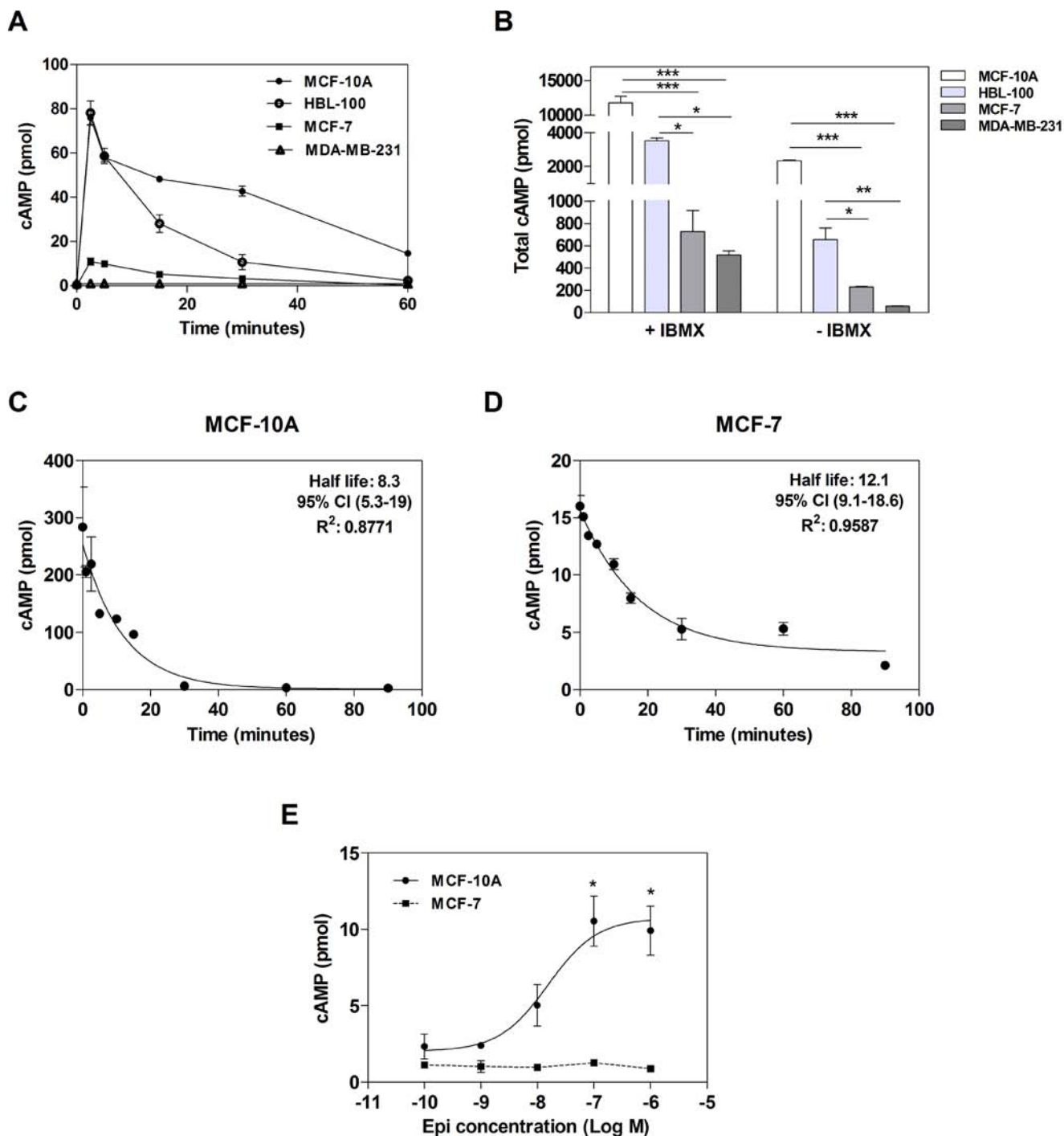


Figure 3: cAMP levels in tumor and non-tumorigenic breast cells. (A) Time course of intracellular cAMP production in MCF-10A, HBL-100, MCF-7 and MDA-MB-231 cells in the absence of IBMX. **(B)** Comparison of the total production of cAMP (area under the curve obtained in A) after 1 μ M isoproterenol stimulation in the presence (+) or absence (-) of 1 mM IBMX. **(C and D)** Desensitization of β -AR in MCF-10A cells (C) or MCF-7 cells (D). **(E)** cAMP concentration-response curves to Epinephrine (Epi) in MCF-10A and MCF-7 cells with 1 mM IBMX. Data represent the mean \pm s.e.m. of three independent experiments. Statistical significance was assessed using ANOVA followed by Bonferroni (B) or Dunnett's test (E). * $p < 0.05$, ** $p < 0.01$, *** $p < 0.001$.

expression and not to a differential desensitization rate of this receptor.

In order to evaluate the effect of Epi, the natural agonist of AR, on cAMP production, concentration-

response curves were also performed. The incubation of MCF-10A cells with increasing concentrations of Epi elicited a marked enhancement of cAMP concentrations (in the presence of IBMX) while the incubation of MCF-7

cells did not change cAMP levels (Figure 3E). This last result on cAMP production could be explained by the high expression of α_2 -AR in this cell line, which classically couple to G_{oi} protein, inactivating adenylyl cyclase [18].

Since the β_2 -AR is the most expressed β -AR subtype in breast cell lines, including MCF-10A and MCF-7 cells [14, 19, 21, 22], we modified the expression levels of this receptor and evaluated its effect on proliferation, adhesion and migration. Cells were transfected either with a small interference RNA (siRNA) for knocking down β_2 -AR expression [23], or with a human β_2 -AR plasmid [24] for over-expressing it. As controls, both cell lines were also transfected with a scrambled siRNA (sc) or an empty vector (mock). β_2 -AR concentrations were analysed by binding assays (Figure 4A for MCF-10A and 4C for MCF-7) and receptor functionality was studied by measuring cAMP levels. As shown in Figure 4B, when modifying β_2 -AR levels in MCF-10A cells, cAMP basal concentrations did

not change. However, the Iso-stimulated concentrations of cAMP were highly dependent on the β_2 -AR expression levels (Figure 4B). In MCF-7, β_2 -AR knock-down abrogated Iso cAMP stimulation (Figure 4D). Moreover, β_2 -AR over-expression caused a significant increase of cAMP levels in both basal and Iso-stimulated conditions, showing the important basal activity of the receptor.

When we evaluated parameters related to tumor phenotype in MCF-10A and MCF-7 cells, we found that β_2 -AR knock-down caused a significant increase in cell proliferation and migration, and a decrease in cell adhesion not only in basal but also in Iso-stimulated conditions (Figure 5). In line with this, β_2 -AR over-expression induced a significant decrease in cell proliferation and migration, and an increase in cell adhesion (Figure 5). Since β_2 -AR over-expression mainly affected basal conditions, no differences were observed when cells were stimulated with Iso.

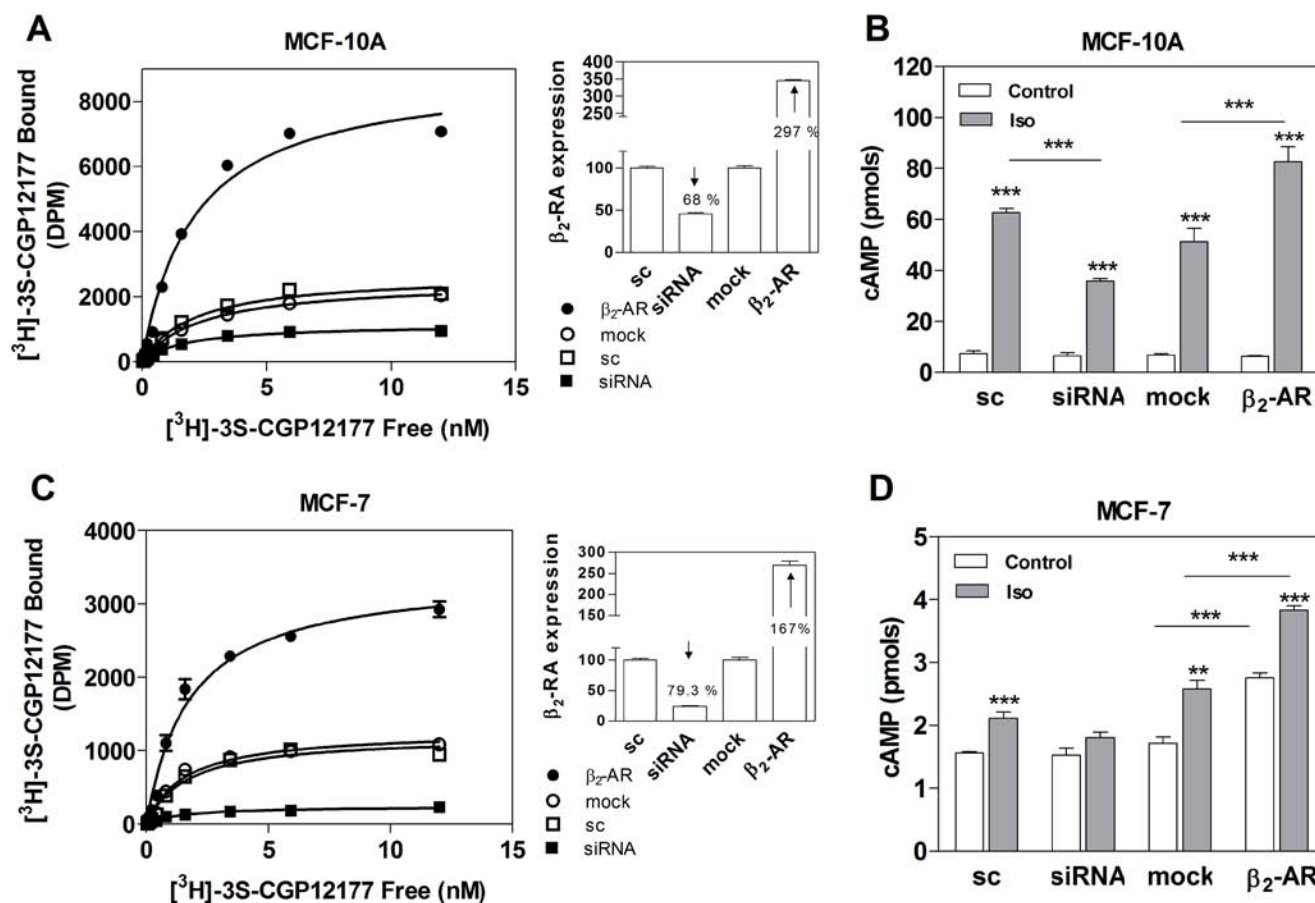


Figure 4: β_2 -AR overexpression and knock-down in MCF-10A and MCF-7 cells. (A) Quantification of β_2 -AR in MCF-10A and (C) MCF-7 cells transfected with scrambled siRNA (sc), β_2 -AR-targeted pooled siRNA (siRNA), pcDNA3.1 (mock) or the plasmid coding for the β_2 -AR. Panels A and C depict the saturation analysis performed with the β -AR radioligand [3 H]-GCP 12177. The results are expressed as the percentage of the scrambled or the mock in whole cells at 4 °C. The modification of the expression of β -AR in the cells is shown in insets as a percentage of the sc or mock. (B) Total cAMP production in MCF-10A cells or (D) MCF-7 cells transfected with sc, siRNA, mock or β_2 -AR and incubated or not (control) with 1 μ M Isoproterenol (Iso). Data represent the mean \pm s.e.m. of two independent experiments. Statistical significance was assessed using ANOVA followed by a Bonferroni test. *** $p < 0.001$.

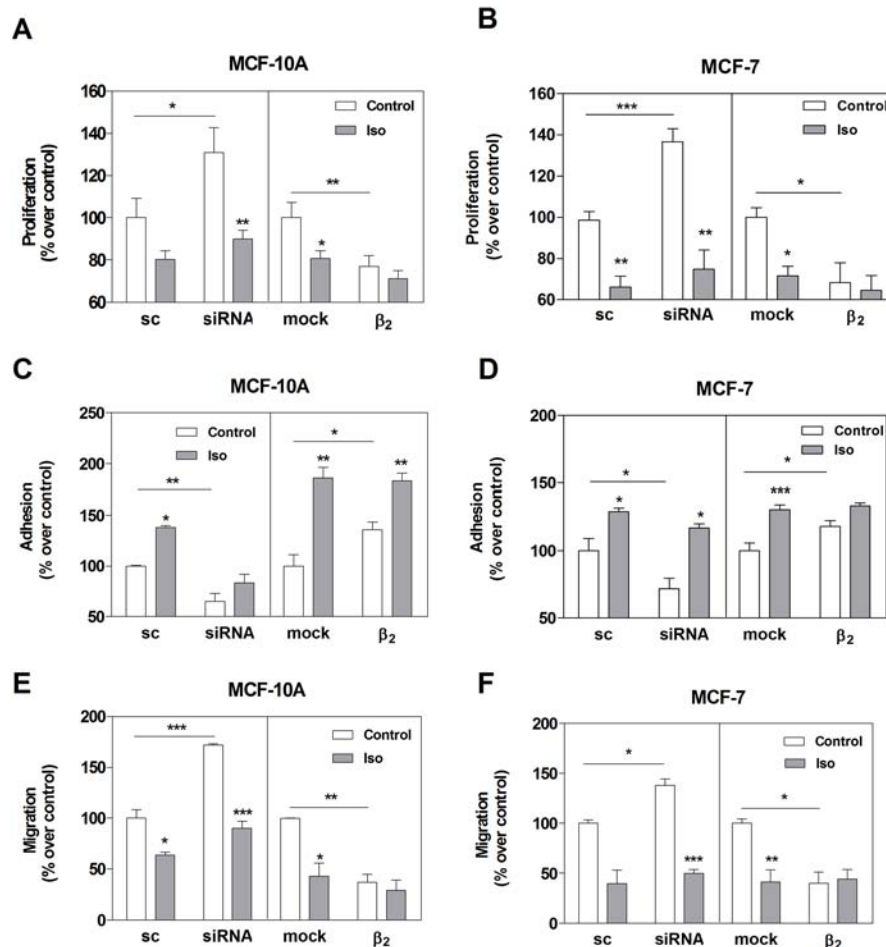


Figure 5: Effect of β_2 -AR expression on cell proliferation, adhesion and cell migration in MCF-10A and MCF-7 cell lines. Cells were transfected with scrambled siRNA (sc), β_2 -AR-targeted pooled siRNA (siRNA), pcDNA3.1 (mock) or the plasmid codifying for the β_2 -AR. The results are expressed as the percentage of the sc or mock. Panels A and B: cells were stimulated or not (Control) with 1 μ M Isoproterenol (Iso) and cell proliferation was evaluated by automatic cell-counting. Panels C and D: cells were stimulated or not (Control) for 15 min with 1 μ M Iso and treated with the specific cell detachment buffer as described in *Materials and Methods*. Results are expressed as the percentage of cell number remaining adherent to the plastic dishes following specific cell detachment treatment. Panels E and F: cell migration was measured by transwell assay treated or not (Control) with 1 μ M Iso during 16 hs. Data represent the mean \pm s.e.m. of three independent experiments. Statistical significance was assessed using ANOVA followed by a Bonferroni test. * $p < 0.05$, ** $p < 0.01$, *** $p < 0.001$.

DISCUSSION

Catecholamines, epinephrine (Epi) and norepinephrine (NEpi), are released during both acute and chronic stress. Their functions are mediated through binding to adrenergic receptors (AR). Classically, these receptors were associated with the regulation of body homeostasis in health and disease, including cardiac and neurologic function. In the last decade, several reports reinforced the idea that ARs have an implication in cancer biology [25, 26]. It was shown that these receptors are involved in breast cancer progression. In particular, more than two decades ago, β -ARs were described in breast cancer cells in human and in experimental models

[19, 27]. Since then, controversial results have been found with respect to agonist action on several parameters related to breast tumor progression, as reviewed in [28]. Numerous studies have shown an inhibition of cell proliferation and cell migration by β -AR agonists [8, 9, 13, 29]. Interestingly, β -blockers, commonly used as antihypertension drugs, have also been identified as decreasing cell proliferation and cell migration in estrogen receptor positive and negative breast cancer cells [14, 15], but also in other tumor types, including lung, pancreas, prostate, colon, stomach and ovarian cancer [30]. These controversial actions between β -agonists and β -blockers could be explained by the presence of polymorphism in the β_2 -AR gene or due to the recently discovery

that some β -blockers have β -arrestin-biased agonism activity [30, 31]. Recently, an α_1 -blocker, also used as an antihypertension drug, inhibited tumor growth by reducing vascularization in an ovarian cancer model [32].

Due to the relevance of β -AR expression and activation in cancer, we first aimed on studying the role of Epi in tumor (MCF-7 and MDA-MB-231) and non-tumorigenic (MCF-10A and HBL-100) human breast cell lines. The MCF-7 cell line was obtained from a pleural effusion of a human breast cancer [33] and is a paradigm of luminal A cells [17]. On the other hand, MDA-MB-231 cell line, also derived from a pleural effusion [34], represents a more aggressive breast tumor. This triple-negative cell line was classified as claudin-low [17]. Both cell lines are well accepted breast cancer *in vitro* models. They were selected not only because they represent opposite types of tumor, but also because MCF-7 is a hormone dependent model, and MDA-MB-231 is an independent one. On the other hand, the MCF-10A cell line arose from a breast cyst of a premenopausal woman [35] and has been considered triple negative [36]. HBL-100, not tumorigenic at low passages, was originally isolated from the milk of an apparently healthy woman [37] and has been classified as claudin-low [17]. Both cell lines are well-accepted models of a non-tumor breast.

In this work, Epi was chosen since it preferentially binds to β_2 -AR (and NEpi to β_1 -AR) and this receptor is the main β subtype expressed in both tumor and non-tumorigenic breast cells [14, 19, 38, 39]. Epi plasma concentration is extremely variable when comparing data from the literature. However, its basal concentration is around 1 nM which can rise 10-fold within seconds during acute stress [7, 40]. For this reason, we decided to evaluate the effect of two different Epi concentrations (1 nM and 1 μ M). Interestingly, when investigating the effect of Epi in cell proliferation, adhesion and migration, the action was opposite in the non-tumorigenic and the tumor cells. In MCF-10A and HBL-100, Epi tended to maintain a benign phenotype, decreasing cell proliferation and migration, and stimulating cell adhesion. The same behavior was observed when cells were stimulated with the β -agonist, Iso. On the other hand, Epi induced cell proliferation and cell migration on MCF-7 tumor cells. This effect on cell proliferation is mediated by α_2 -AR, as we have previously described [18]. Moreover, in this study dexmedetomidine, an α_2 -agonist, also induced a decrease in MDA-MB-231 cell adhesion, and an increase in cell migration in both tumor cell lines. In particular, in MCF-7, when increasing Epi concentration to 1 μ M, no significant differences were observed in terms of cell migration. This could be due to the fact that at nM concentration, actions are mediated preferentially by α_2 -AR, and at μ M concentration the β -AR effect compensates for the α_2 -AR effect. This dual Epi action, was previously described in the proliferation of breast cancer cell lines [9]. In conclusion, Epi response

could then be interpreted as mainly mediated by β -AR in non-tumorigenic cells and by α_2 -AR in tumor cells.

ARs are widely over-expressed in numerous types of human breast tumor. In particular, an enhanced β_2 -AR expression was found in the luminal subtype with low clinical stage, low proliferation and good prognosis [41]. In line with this, the present study shows that the non-tumorigenic MCF-10A cell line express higher levels of β -AR than the tumor MCF-7 cell line. On the other hand, Powe et al. described that α_{2c} -AR are highly expressed in breast tumors with a more aggressive phenotype, which is in line with our previous observation where α_2 -AR binding sites were higher in tumor breast cell lines in comparison with the non-tumorigenic cells [18].

cAMP production is the classical second messenger involved in the β -AR pathway. Therefore, we determined its levels in the non-tumorigenic and tumor breast cell lines. cAMP levels were higher in the non-tumorigenic MCF-10A and HBL-100, intermediate in MCF-7 and lowest in MDA-MB-231. These findings suggest that there seems to be a progression toward less cAMP production when the cells are more malignant. This is in line with Bodwin et al, who demonstrated, even before breast cancer β -AR description, that cAMP inhibits mammary tumor growth [42]. MDA-MB-231 cell line was described as expressing high levels of β_2 -AR [22]. However, as previously mentioned, low cAMP levels were detected. Therefore, in this cell line, the production of this second messenger does not seem to directly correlate with β_2 -AR concentration. Indeed, it is well known that the activity of GPCRs results from a coordinated balance among diverse mechanisms that govern receptor signaling at the different levels of signal propagation. Thus, our findings in the MDA-MB-231 cells could be explained by an imbalance in protein levels involved in the β -signaling pathway or an impaired coupling of the β_2 -AR/G protein/adenylyl cyclase. Further detailed studies are necessary to determine the cause of these low cAMP levels detected in MDA-MB-231 cells.

cAMP concentration is the result of its production, which is diminished by desensitization, its degradation by phosphodiesterases (PDEs) and/or the efflux by multidrug resistance-associated proteins. In particular, desensitization has been extensively studied for the β_2 -AR. It was described as a physiologically mechanism triggered by constant or repeated stimuli, which protects the cell from both short- and long-term receptor overstimulation [43]. The results of cAMP production showed that MCF-10A and MCF-7 produced higher levels of this cyclic nucleotide within non-tumorigenic or tumor cell categories. Thus, these two cell lines were chosen in order to evaluate the role of β_2 -AR on the tumor phenotype. Since MCF-10A showed higher β_2 -AR and cAMP levels than MCF-7, we then focused on studying β -desensitization, a process that directly associates cAMP

levels to functional β -AR in cell membrane. No differences were observed in the capacity of the endogenous receptor to continue being stimulated, assessed as a measure of all these processes summarized as desensitization. The time-course of cAMP production showed a parallel curve, suggesting that the degradation should also be similar in both cell lines. Therefore the higher cAMP concentration in MCF-10A cells seems to be due to a higher production in this cell line, which should be at least partially due to the higher β_2 -AR concentration observed. However, a better coupling of the receptor to the G protein and adenylyl cyclase cannot be discarded.

To further investigate the effect of β_2 -AR concentration in the breast cell phenotype, this receptor was successfully over-expressed or knocked-down in MCF-10A and MCF-7 cell lines, as confirmed by the binding assays. A strong effect on cell proliferation, adhesion and migration was observed in both cell lines when the β_2 -AR was silenced or over-expressed. These findings strengthen β_2 -AR relevance in cell processes implied in tumor progression. When MCF-10A cells were stimulated with the β -AR agonist, cAMP production highly correlated with cell proliferation, adhesion and migration. However, the basal levels were not modified by over-expressing or silencing β_2 -AR. This could be explained by cAMP compartmentalization. In fact, it has recently been described that the proximity of PDEs to the site of cAMP synthesis restricts its dissemination through the cell [44]. Moreover, the stimulation of β_1 -AR induces a cAMP gradient that propagates throughout the cells, while localized β_2 -AR stimulation does not trigger cAMP diffusion [45]. On the other hand, classical approaches to measuring total cAMP production with poor spatiotemporal resolution most probably miss cAMP synthesis in discrete cell compartments. All in all, in MCF-10A cells slight changes of cAMP levels in specific cell compartments could translate into important changes in biological actions. In MCF-7 cells however, the over-expression of the receptor enhanced both the basal and the stimulated cAMP levels, showing an important basal activity of the receptor in these cells. Unliganded β_2 -AR was described coupling to Gs, explaining the basal activity [46].

Experiments investigating the possibility of using α_2 and β -agonists and antagonists for inhibiting cell migration and invasion and enhancing cell adhesion are advanced in our laboratory, as well as the signaling pathways involved in these processes.

In conclusion, the present study demonstrates for the first time that not only activation, but also β_2 -AR expression regulates breast tumor cell phenotype, modifying proliferation, adhesion and cell migration. Thus, the level of β_2 -AR expression and its functionality could be important indicators of cell malignancy and consequently of tumor progression. Additionally, as similar results were obtained in two different and opposite tumor models,

the role of β_2 -AR in breast cancer might be independent of the breast cancer molecular subtype reinforcing its relevance in clinical translation. Future studies using patient and normal breast samples are necessary to gain greater insight for the implication of β_2 -AR on breast cancer.

MATERIALS AND METHODS

Drugs and reagents

Methyl-[3 H]-thymidine (NET 027E; specific activity: 20 Ci/mmol) was from Dupont-New England Nuclear (Boston, MA, USA). [3 H]-cAMP (31 Ci/mmol) and [3 H]-CGP12177 (30 Ci/mmol) were from Perkin Elmer Life Sciences (Waltham, MA, USA). Insulin, epidermal growth factor (EGF), hydrocortisone, (-)-epinephrine, isoproterenol, 3-isobutyl-methylxanthine, were from Sigma-Aldrich (St Louis, MO, USA). Dexmedetomidine was purchased from Abbot (Buenos Aires, Argentina). Culture medium, fetal calf serum (FCS), Lipofectamine 2000, siRNA (ADRB2 Stealth Select RNAi™, HSS100258, HSS100259, y HSS100260) and other products for cell culture were from Invitrogen (Carlsbad, CA, USA). FuGENE® was purchased from Promega (Madison, WI, USA) and the transwell inserts were BD-Falcon (San Jose, CA, USA).

Cell culture and transfection

MCF-10A, MCF-7, MDA-MB-231 and HBL-100 cells lines were obtained from the American Type Culture Collection (ATCC, Manassas, VA, USA) and were cultured as already described [18] with Hepes-buffered DMEM/Ham F12 culture medium (basal medium) supplemented with antibiotics (100 μ g/mL streptomycin, 100 IU/mL penicillin), 10% FCS and 2 μ g/mL human insulin (complete medium). For MCF-10A cells the medium was also supplemented with 20 ng/mL EGF and 0.1 μ M hydrocortisone. Cells were sub-cultured once weekly by trypsinization (0.25% trypsin–0.025% EDTA) and the medium was changed every second or third day.

For transfection, 5×10^5 cells/well were seeded in 24 well-plates in complete medium. The receptors were knocked down with small interfering RNA (siRNA) as previously described [23]: 10 nM of three different sequences of siRNA targeting β_2 -AR, the mixture of them or 10 nM non-targeting scrambled siRNA (sc), used as a control. The β_2 -AR was overexpressed by transfecting 1.5 μ g per well of a plasmid already described [24]. The control was the empty vector pcDNA3.1 (mock). The plasmids and siRNAs were prepared in OPTIMEM medium. For MCF-10A cells, FuGENE was used for 18 h [14], whereas for MCF-7 cells Lipofectamine 2000 was used for 6 h. After transfection, the medium

was removed and replaced by fresh complete medium. Proliferation, adhesion and migration assays were performed between 48 and 72 h post-transfection. Receptor silencing or over-expression was evaluated by binding assays.

Cell proliferation

Cells were seeded in 96-well plates (5×10^3 cells/well) and grown during 24 h in complete medium. After 24 h the medium was changed to 2% charcoal-stripped FCS and the cells were treated with the compounds described. The treatment was repeated an additional day with the addition of 0.2 μ Ci methyl- 3 H-thymidine/well. Cells were harvested in a Nunc Cell Harvester 8 and radioactive nuclei retained into the glass fiber filters were counted in a liquid scintillation counter. The results are expressed as percentage of the control incubated in the absence of any compound. Proliferation response in transfected cells was evaluated by automatic cell-counting (Beckman Coulter Z1 Cell-counter).

Measurement of cell adhesion

Cells were seeded in 12-well plates (1.5×10^5 cells/well) for 24 h, the medium was removed, and cells were treated or not with different adrenergic compounds during 15 min in basal medium. The medium was removed and the cells were incubated in Mg^{2+}/Ca^{2+} -free PBS containing 0.5 mM EDTA and 0.25% trypsin as previously described in constant agitation at room temperature during 15 min for MCF-10A cells [14], or 5 min for MCF-7, MDA-MB-231 and HBL-100 cells. Cells that resisted the treatment and remained adherent to the plastic were harvested following an additional 30 min incubation in Mg^{2+}/Ca^{2+} -free PBS containing 2.5 mM EDTA and 1.25% trypsin and counted (attached cells) using a cell counter. The percentage of adherent cells was calculated as follows: attached cells \times 100/ (attached cells + detached cells).

Migration assay

Cell migration was evaluated using transwell inserts with 8 μ m pore. 2×10^4 cells were seeded in the upper compartment, onto the porous membrane, and were allowed to adhere during 4 h in complete medium. Afterwards, the medium was carefully removed and changed for a basal medium and stimulated with the adrenergic compounds to test. After 16 h, the medium was removed and the cells fixed and stained with 0.05% crystal violet in methanol during 10 min. Non-migrated cells were removed from the top of the membrane using a cotton swab. The total amount of migrated cells was counted on an inverted microscope.

Radioligand binding assay

β -AR quantification was performed by binding analysis in whole cells at 4 °C to avoid ligand internalization, as described [23]. 7×10^4 cells/well were seeded in 48 well plates. The number of binding sites was evaluated using the antagonist 3 H]-GCP12177 in the presence or absence of 100 μ M Iso at 4 °C [23]. The incubation was stopped by dilution with 3 ml of ice-cold 50 mM Tris-HCl, pH 7.4. After three washes with 3 ml of ice-cold buffer, the bound fraction was collected in 200 μ l of ethanol.

cAMP cell content quantification

cAMP content was quantified using a competitive radio-binding assay for PKA using 3 H]-cAMP, as previously described [47]. Cells were seeded in 24-well plates (1.7×10^5 cells/well) in complete medium. After 24 h, the medium was removed and cells were incubated in RPMI medium without phenol red at 37 °C with different adrenergic compounds during the indicated times with or without 1mM of the PDE inhibitor 3-isobutylmethylxanthine (IBMX) at 37 °C. Ethanol was added to stop the reaction. The extracts were centrifuged for 3 min at $3000 \times g$ and the recovered supernatant was evaporated and then resuspended in 50 mM Tris-HCl, pH 7.4, 0.1% BSA for cAMP quantification. Standard curves were performed with 8 different cAMP concentrations, ranging from 0.1 to 90 pmols. The data shown are the result of duplicates from at least three independent experiments.

Statistical analysis

The experiments were repeated at least twice with identical results. The analyses performed were Student's t test or ANOVA followed by Bonferroni or Dunnet's test in the case of multiple comparison. The differences were considered significant when $p < 0,05$ [48]. Binding data, sigmoidal dose-response, and desensitization fittings were performed with GraphPad Prism 5.00 for Windows (GraphPad Software, San Diego, CA).

ACKNOWLEDGEMENTS

This paper is dedicated to the memory of Dr. Hervé Paris, our friend and colleague who was the mentor of this work. We gratefully thank Michel Bovier for kindly providing us the β_2 -AR plasmid (Département de Biochimie, Université de Montréal). The authors declare there are not conflicts of interest. This work was supported by a grant from the MINCYT-Ecosud Argentina-France, Fundación Roemmers, PICT 2011#103, PICT 2010#1571 (ANPCyT) and PIP 2010-2012#692 from CONICET and Fundación Instituto de Biología y Medicina Experimental.

REFERENCES

1. Ferlay J, Shin HR, Bray F, Forman D, Mathers C, Parkin DM. Estimates of worldwide burden of cancer in 2008: GLOBOCAN 2008. *Int J Cancer*. 2010; 127:2893–2917.
2. Siegel R, Ma J, Zou Z, Jemal A. Cancer Statistics, 2014. *CA Cancer J Clin*. 2014; 64:9–29.
3. Prat A, Ellis MJ, Perou CM. Practical implications of gene-expression-based assays for breast oncologists. *Nat Rev Clin Oncol*. 2012; 9:48–57.
4. Hara MR, Sachs BD, Caron MG, Lefkowitz RJ. Pharmacological blockade of a beta 2AR-beta-arrestin-1 signaling cascade prevents the accumulation of DNA damage in a behavioral stress model. *Cell Cycle*. 2013; 12:219–224.
5. Bylund DB, Eikenberg DC, Hieble JP, Langer SZ, Lefkowitz RJ, Minneman KP, Molinoff PB, Ruffolo RR Jr., Trendelenburg U. International Union of Pharmacology nomenclature of adrenoceptors. *Pharmacol Rev*. 1994; 46:121–136.
6. Shukla AK, Xiao K, Lefkowitz RJ. Emerging paradigms of beta-arrestin-dependent seven transmembrane receptor signaling. *Trends Biochem Sci*. 2011; 36:457–469.
7. Cole SW, Sood AK. Molecular pathways: beta-adrenergic signaling in cancer. *Clin Cancer Res*. 2012; 18:1201–1206.
8. Carie AE, Sebti SM. A chemical biology approach identifies a beta-2 adrenergic receptor agonist that causes human tumor regression by blocking the Raf-1/Mek-1/Erk1/2 pathway. *Oncogene*. 2007; 26:3777–3788.
9. Perez Pinero C, Bruzzone A, Sarappa MG, Castillo LF, Luthy IA. Involvement of alpha2- and beta2-adrenoceptors on breast cancer cell proliferation and tumour growth regulation. *Br J Pharmacol*. 2012; 166:721–736.
10. Slotkin TA, Seidler FJ. Antimitotic and cytotoxic effects of theophylline in MDA-MB-231 human breast cancer cells. *Breast Cancer Res Treat*. 2000; 64:259–267.
11. Cakir Y, Plummer HK III, Tithof PK, Schuller HM. Beta-adrenergic and arachidonic acid-mediated growth regulation of human breast cancer cell lines. *Int J Oncol*. 2002; 21:153–157.
12. Drell TL, Joseph J, Lang K, Niggemann B, Zaenker KS, Entschladen F. Effects of neurotransmitters on the chemokinesis and chemotaxis of MDA-MB-468 human breast carcinoma cells. *Breast Cancer Res Treat*. 2003; 80:63–70.
13. Strell C, Niggemann B, Voss MJ, Powe DG, Zanker KS, Entschladen F. Norepinephrine Promotes the beta1-Integrin-Mediated Adhesion of MDA-MB-231 Cells to Vascular Endothelium by the Induction of a GROalpha Release. *Mol Cancer Res*. 2012; 10:197–207.
14. Bruzzone A, Sauliere A, Finana F, Senard JM, Luthy I, Gales C. Dosage-dependent regulation of cell proliferation and adhesion through dual beta2-adrenergic receptor/cAMP signals. *FASEB J*. 2014; 28:1342–1354.
15. Powe DG, Entschladen F. Targeted therapies: Using beta-blockers to inhibit breast cancer progression. *Nat Rev Clin Oncol*. 2011; 8:511–512.
16. Powe DG, Voss MJ, Zanker KS, Habashy HO, Green AR, Ellis IO, Entschladen F. Beta-blocker drug therapy reduces secondary cancer formation in breast cancer and improves cancer specific survival. *Oncotarget*. 2010; 1:628–638.
17. Prat A, Perou CM. Deconstructing the molecular portraits of breast cancer. *Mol Oncol*. 2011; 5:5–23.
18. Vazquez SM, Mladovan AG, Perez C, Bruzzone A, Baldi A, Luthy IA. Human breast cell lines exhibit functional alpha(2)-adrenoceptors. *Cancer Chemother Pharmacol*. 2006; 58:50–61.
19. Vandewalle B, Revillion F, Lefebvre J. Functional beta-adrenergic receptors in breast cancer cells. *J Cancer Res Clin Oncol*. 1990; 116:303–306.
20. Fernandez N, Gottardo FL, Alonso MN, Monczor F, Shayo C, Davio C. Roles of phosphorylation-dependent and -independent mechanisms in the regulation of histamine H2 receptor by G protein-coupled receptor kinase 2. *J Biol Chem*. 2011; 286:28697–28706.
21. Badino GR, Novelli A, Girardi C, Di Carlo F. Evidence for functional beta-adrenoceptor subtypes in CG-5 breast cancer cell. *Pharmacol Res*. 1996; 33:255–260.
22. Draoui A, Vandewalle B, Hornez L, Revillion F, Lefebvre J. Beta-adrenergic receptors in human breast cancer: identification, characterization and correlation with progesterone and estradiol receptors. *Anticancer Res*. 1991; 11:677–680.
23. Tubio MR, Fernandez N, Fitzsimons CP, Copsel S, Santiago S, Shayo C, Davio C, Monczor F. Expression of a G protein-coupled receptor (GPCR) leads to attenuation of signaling by other GPCRs: experimental evidence for a spontaneous GPCR constitutive inactive form. *Journal of Biological Chemistry*. 2010; 285:14990–14998.
24. Lavoie C, Mercier JF, Salahpour A, Umaphathy D, Breit A, Villeneuve LR, Zhu WZ, Xiao RP, Lakatta EG, Bouvier M, Hebert TE. Beta 1/beta 2-adrenergic receptor heterodimerization regulates beta 2-adrenergic receptor internalization and ERK signaling efficacy. *J Biol Chem*. 2002; 277:35402–35410.
25. Antoni MH, Lutgendorf SK, Cole SW, Dhabhar FS, Sephton SE, McDonald PG, Stefanek M, Sood AK. The influence of bio-behavioural factors on tumour biology: pathways and mechanisms. *Nat Rev Cancer*. 2006; 6:240–248.
26. Lutgendorf SK, Sood AK, Antoni MH. Host factors and cancer progression: biobehavioral signaling pathways and interventions. *J Clin Oncol*. 2010; 28:4094–4099.
27. Marchetti B, Spinola PG, Plante M, Poyet P, Folley N, Pelletier G, Labrie F. Beta-adrenergic receptors in DMBA-induced rat mammary tumors: correlation with progesterone receptor and tumor growth. *Breast Cancer Res Treat*. 1989; 13:251–263.

28. Lüthy IA, Bruzzone A, Pérez Piñero CP. Adrenergic Action in Breast Cancer. *Current Cancer Therapy Reviews*. 2012; 8:90–99.
29. Slotkin TA, Zhang J, Dancel R, Garcia SJ, Willis C, Seidler FJ. Beta-adrenoceptor signaling and its control of cell replication in MDA-MB-231 human breast cancer cells. *Breast Cancer Res Treat*. 2000; 60:153–166.
30. Schuller HM. Beta-adrenergic signaling, a novel target for cancer therapy?. *Oncotarget*. 2010; 1:466–469.
31. Ahles A, Engelhardt S. Polymorphisms determine beta-adrenoceptor conformation: implications for cardiovascular disease and therapy. *Trends Pharmacol Sci*. 2009; 30:188–193.
32. Park MS, Kim BR, Dong SM, Lee SH, Kim DY, Rho SB. The antihypertension drug doxazosin inhibits tumor growth and angiogenesis by decreasing VEGFR-2/Akt/mTOR signaling and VEGF and HIF-1alpha expression. *Oncotarget*. 2014; 5:4935–4944.
33. Soule HD, Vazquez J, Long A, Albert S, Brennan M. A human cell line from a pleural effusion derived from a breast carcinoma. *J Natl Cancer Inst*. 1973; 51:1409–1416.
34. Cailleau R, Young R, Olive M, Reeves WJ Jr. Breast tumor cell lines from pleural effusions. *J Natl Cancer Inst*. 1974; 53:661–674.
35. Soule HD, Maloney TM, Wolman SR, Peterson WD Jr, Brenz R, McGrath CM, Russo J, Pauley RJ, Jones RF, Brooks SC. Isolation and characterization of a spontaneously immortalized human breast epithelial cell line, MCF-10. *Cancer Res*. 1990; 50:6075–6086.
36. Prat A, Karginova O, Parker JS, Fan C, He X, Bixby L, Harrell JC, Roman E, Adamo B, Troester M, Perou CM. Characterization of cell lines derived from breast cancers and normal mammary tissues for the study of the intrinsic molecular subtypes. *Breast Cancer Res Treat*. 2013; 142:237–255.
37. Gaffney EV. A cell line (HBL-100) established from human breast milk. *Cell Tissue Res*. 1982; 227:563–568.
38. Tang J, Li Z, Lu L, Cho CH. beta-Adrenergic system, a backstage manipulator regulating tumour progression and drug target in cancer therapy. *Semin Cancer Biol*. 2013; 23:533–542.
39. Badino GR, Novelli A, Girardi C, Di Carlo F. Evidence for functional beta-adrenoceptor subtypes in CG-5 breast cancer cell. *Pharmacol Res*. 1996; 33:255–260.
40. McMorris T, Swain J, Smith M, Corbett J, Delves S, Sale C, Harris RC, Potter J. Heat stress, plasma concentrations of adrenaline, noradrenaline, 5-hydroxytryptamine and cortisol, mood state and cognitive performance. *Int J Psychophysiol*. 2006; 61:204–215.
41. Powe DG, Voss MJ, Habashy HO, Zanker KS, Green AR, Ellis IO, Entschladen F. Alpha- and beta-adrenergic receptor (AR) protein expression is associated with poor clinical outcome in breast cancer: an immunohistochemical study. *Breast Cancer Res Treat*. 2011; 130:457–463.
42. Bodwin JS, Clair T, Cho-Chung YS. Inverse relation between estrogen receptors and cyclic adenosine 3':5'-monophosphate-binding proteins in hormone-dependent mammary tumor regression due to dibutyryl cyclic adenosine 3':5'-monophosphate treatment or ovariectomy. *Cancer Res*. 1978; 38:3410–3413.
43. Zhang J, Barak LS, Winkler KE, Caron MG, Ferguson SS. A central role for beta-arrestins and clathrin-coated vesicle-mediated endocytosis in beta2-adrenergic receptor resensitization. Differential regulation of receptor resensitization in two distinct cell types. *J Biol Chem*. 1997; 272:27005–27014.
44. Cheepala S, Hulot JS, Morgan JA, Sassi Y, Zhang W, Naren AP, Schuetz JD. Cyclic Nucleotide Compartmentalization: Contributions of Phosphodiesterases and ATP-Binding Cassette Transporters. *Annu Rev Pharmacol Toxicol*. 2013; 53:231–253.
45. Nikolaev VO, Bunemann M, Schmitteckert E, Lohse MJ, Engelhardt S. Cyclic AMP imaging in adult cardiac myocytes reveals far-reaching beta1-adrenergic but locally confined beta2-adrenergic receptor-mediated signaling. *Circ Res*. 2006; 99:1084–1091.
46. Bokoch MP, Zou Y, Rasmussen SG, Liu CW, Nygaard R, Rosenbaum DM, Fung JJ, Choi HJ, Thian FS, Kobilka TS, Puglisi JD, Weis WI, Pardo L, Prosser RS, Mueller L, Kobilka BK. Ligand-specific regulation of the extracellular surface of a G-protein-coupled receptor. *Nature*. 2010; 463:108–112.
47. Copsel S, Garcia C, Diez F, Vermeulem M, Baldi A, Bianciotti LG, Russel FG, Shayo C, Davio C. Multidrug resistance protein 4 (MRP4/ABCC4) regulates cAMP cellular levels and controls human leukemia cell proliferation and differentiation. *J Biol Chem*. 2011; 286:6979–6988.
48. Dowdy S, Wearden S. (1983). *Statistics for research*. New York, John Wiley & Sons, Inc).