

## Schisandrol B and schisandrin B inhibit TGF $\beta$ 1-mediated NF- $\kappa$ B activation via a Smad-independent mechanism

Jung Nyeo Chun<sup>1,2,\*</sup>, Soonbum Park<sup>1,\*</sup>, Sanghoon Lee<sup>3</sup>, Jae-Kyung Kim<sup>1</sup>, Eun-Jung Park<sup>1</sup>, MinJi Kang<sup>1</sup>, Hye Kyung Kim<sup>4,5</sup>, Jong Kwan Park<sup>5</sup>, Insuk So<sup>1,2</sup> and Ju-Hong Jeon<sup>1,2</sup>

<sup>1</sup>Department of Physiology and Biomedical Sciences, Seoul National University College of Medicine, Seoul 03080, Korea

<sup>2</sup>Institute of Human-Environment Interface Biology, Seoul National University, Seoul 03080, Korea

<sup>3</sup>Department of Biochemistry, University of Utah School of Medicine, Salt Lake City, UT 84112-5650, USA

<sup>4</sup>College of Pharmacy, Kyungshung University, Busan 48434, Korea

<sup>5</sup>Department of Urology, Medical School, and Institute for Medical Sciences, Chonbuk National University, Jeonju 54896, Korea

\*These authors contributed equally to this work

Correspondence to: Ju-Hong Jeon, email: jhjeon2@snu.ac.kr

Keywords: *schisandra chinensis*; schisandrol B; schisandrin B; TGF $\beta$ 1; NF- $\kappa$ B

Received: June 30, 2017

Accepted: November 15, 2017

Published: December 14, 2017

Copyright: Chun et al. This is an open-access article distributed under the terms of the Creative Commons Attribution License 3.0 (CC BY 3.0), which permits unrestricted use, distribution, and reproduction in any medium, provided the original author and source are credited.

### ABSTRACT

**Aberrant transforming growth factor  $\beta$ 1 (TGF $\beta$ 1) signaling plays a pathogenic role in the development of vascular fibrosis. We have reported that *Schisandra chinensis* fruit extract (SCE), which has been used as a traditional oriental medicine, suppresses TGF $\beta$ 1-mediated phenotypes in vascular smooth muscle cells (VSMCs). However, it is still largely unknown about the pharmacologic effects of SCE on various TGF $\beta$ 1 signaling components. In this study, we found that SCE attenuated TGF $\beta$ 1-induced NF- $\kappa$ B activation and nuclear translocation in VSMCs. Among the five active ingredients of SCE that were examined, schisandrol B (SolB) and schisandrin B (SchB) most potently suppressed TGF $\beta$ 1-mediated NF- $\kappa$ B activation. In addition, SolB and SchB effectively inhibited IKK $\alpha$ / $\beta$  activation and I $\kappa$ B $\alpha$  phosphorylation in TGF $\beta$ 1-treated VSMCs. The pharmacologic effects of SolB and SchB on NF- $\kappa$ B activation were independent of the Smad-mediated canonical pathway. Therefore, our study demonstrates that SCE and its active constituents SolB and SchB suppress TGF $\beta$ 1-mediated NF- $\kappa$ B signaling pathway in a Smad-independent mechanism. Our results may help further investigations to develop novel multi-targeted therapeutic strategies that treat or prevent vascular fibrotic diseases.**

### INTRODUCTION

Transforming growth factor  $\beta$ 1 (TGF $\beta$ 1) mediates tissue repair or wound healing processes by regulating various molecular and cellular mechanisms, including cell migration, proliferation, and extracellular matrix (ECM) production [1, 2]. However, aberrant TGF $\beta$ 1 signaling disturbs physiological tissue remodeling, which leads to pathologic fibrotic changes [3]. Particularly, TGF $\beta$ 1 is involved in the pathogenesis of a range of vascular

fibrotic diseases, such as restenosis, atherosclerosis, and hypertension [4–6]. In these pathological states, TGF $\beta$ 1 acts on vascular smooth muscle cells (VSMCs) to induce synthetic phenotypes, including cell migration and proliferation, to the injured sites [7–10].

NF- $\kappa$ B is a transcription factor that controls the expression of genes involved in various biological processes, including inflammation and cell survival [11–14]. Deregulated activation of NF- $\kappa$ B is closely associated with many diseases, including cancer and vascular human

diseases [11, 15–18]. In VSMCs, NF- $\kappa$ B participates in the progress of vascular fibrotic diseases via multiple cellular processes, including increased cell migration and neointima formation [19, 20]. In addition, NF- $\kappa$ B activity is elevated during the normal aging process, which contributes to the development of vascular diseases [21, 22]. Therefore, NF- $\kappa$ B signaling pathway has gained attention as a promising a therapeutic target for treatment of vascular fibrosis [23–25].

TGF $\beta$ 1 engagement of the type II receptor (T $\beta$ RII) serine/threonine kinases at the plasma membrane allows T $\beta$ RII to phosphorylate T $\beta$ RI [26, 27]. In turn, the activated T $\beta$ RI propagates the signals through both the Smad-dependent canonical pathways and the Smad-independent non-canonical pathways [28–30]. Therefore, the cellular output to TGF $\beta$ 1 signaling is influenced by interaction between canonical and non-canonical signaling cascades. Accumulating evidence has shown that TGF $\beta$ 1 activates NF- $\kappa$ B pathway via the non-canonical pathways [28, 31], suggesting that TGF $\beta$ 1-NF- $\kappa$ B signaling axis plays a crucial role in the pathogenesis of vascular fibrotic diseases.

*Schisandra chinensis* fruit extract (SCE) has been used as a traditional oriental medicine and shown to be effective in the treatment of cardiovascular diseases [32]. We have demonstrated that SCE and its active ingredient schisandrin B (SchB) effectively inhibit TGF $\beta$ 1-induced Smad activation and myosin light chain (MLC) phosphorylation in VSMCs [33, 34]. These results suggest that SCE or its active components can be used as multi-targeted therapeutic agents that attenuate or prevent vascular fibrotic diseases.

In this study, we investigated the effect of SCE and its active ingredients on TGF $\beta$ 1-NF- $\kappa$ B signaling axis in A7r5 VSMCs. We discovered that SCE inhibited TGF $\beta$ 1-induced NF- $\kappa$ B activation. Of the five active ingredients of SCE that were examined, schisandrol B (SolB) and SchB were most potently inhibited TGF $\beta$ 1-NF- $\kappa$ B signaling axis via a Smad-independent mechanism. Our results provide insight into understanding the molecular mechanisms of pharmacologic actions of SCE and its active constituents on vascular fibrosis.

## RESULTS

### SCE inhibits TGF $\beta$ 1-induced NF- $\kappa$ B activation in A7r5 cells

It has been known that SCE suppresses TGF $\beta$ 1 signaling in fibrotic responses [33, 34]. On the other hand, it has been found that SCE inhibits NF- $\kappa$ B signaling in inflammatory responses [35–37]. Based on these findings, we have raised a question whether SCE inhibits TGF $\beta$ 1-induced NF- $\kappa$ B activation in VSMCs. To solve this question, we first performed luciferase assays using reporter gene constructs containing Smad- or NF-

$\kappa$ B-binding elements in TGF $\beta$ 1-treated A7r5 cells. As expected [33], SCE inhibited Smad-mediated luciferase activity (Figure 1A). Similarly, SCE suppressed NF- $\kappa$ B-mediated luciferase activity in a dose-dependent manner (Figure 1B), indicating that SCE inhibits TGF $\beta$ 1-induced NF- $\kappa$ B activation.

To confirm these results, we analyzed the microarray data (GSE87439) obtained from A7r5 cells treated with TGF $\beta$ 1 and/or SCE. The SAM analysis identified that TGF $\beta$ 1 induces changes in the expression levels of 3840 genes in A7r5 cells. Of the 3840 genes, SCE completely or partially reversed the expression levels of 2147 genes in TGF $\beta$ 1-treated cells (data not shown). We also found that TGF $\beta$ 1 affects the expression levels of 98 NF- $\kappa$ B target genes in A7r5 cells. Of the 98 genes, SCE completely or partially reversed the expression levels of 48 genes in TGF $\beta$ 1-treated cells. The quantitative graphs showed the typical NF- $\kappa$ B target genes expression induced by TGF $\beta$ 1 which regulated by SCE. These results demonstrate that SCE inhibits TGF $\beta$ 1-induced NF- $\kappa$ B activation in addition to Smad (Figure 1C and Supplementary Figure 1).

### SCE inhibits TGF $\beta$ 1-induced IKK activation and I $\kappa$ B $\alpha$ degradation in A7r5 cells

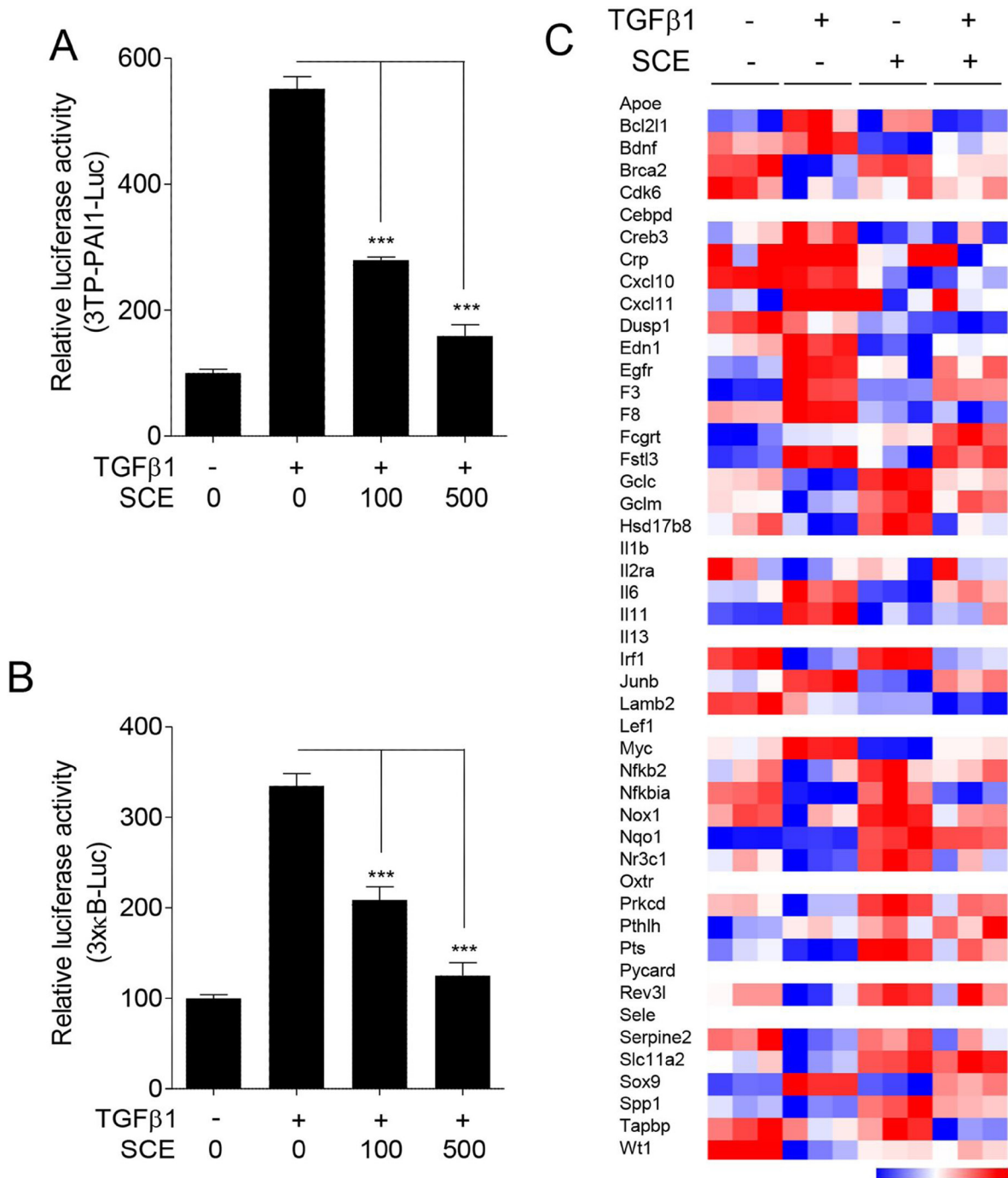
To further confirm the inhibitory effect of SCE on TGF $\beta$ 1-induced NF- $\kappa$ B activation, we examined whether SCE affect IKK signaling pathway. Western blot analysis showed that TGF $\beta$ 1 increased the levels of phospho-I $\kappa$ B $\alpha$  and -IKK $\alpha$ / $\beta$  and concomitantly decreased those of total I $\kappa$ B $\alpha$  following 1 h of treatment with TGF $\beta$ 1 (Figure 2A). Under the same condition, SCE markedly suppressed TGF $\beta$ 1-mediated phosphorylation of I $\kappa$ B $\alpha$  and IKK $\alpha$ / $\beta$  and degradation of I $\kappa$ B $\alpha$  (Figure 2B). In addition, confocal microscopic analysis revealed that SCE inhibited TGF $\beta$ 1-induced NF- $\kappa$ B translocation to the nucleus (Figure 2C and 2D). Therefore, these results demonstrate that SCE inhibits TGF $\beta$ 1-induced IKK activation and I $\kappa$ B $\alpha$  degradation.

### SolB and SchB inhibit TGF $\beta$ 1-induced NF- $\kappa$ B activation in A7r5 cells

To identify the effective ingredients of SCE against TGF $\beta$ 1-induced NF- $\kappa$ B activation, we examined five active ingredients of SCE using luciferase assays. Among these compounds, schisandrol B (SolB) and schisandrin B (SchB) most potently inhibited NF- $\kappa$ B activity in TGF $\beta$ 1-treated A7r5 cells, whereas schisandrin C slightly reduced NF- $\kappa$ B activity (Supplementary Figure 2). SolB and SchB suppressed NF- $\kappa$ B-mediated luciferase activity in a dose-dependent manner (Figure 3A and 3B). Therefore, we chose SolB and SchB as effective components for the following studies. SolB and SchB co-treatment showed additive inhibitory effect on NF- $\kappa$ B activity (Figure 3C). Interestingly, we found that SolB and SchB exert different

pharmacologic effects in TGFβ1-treated A7r5 cells. SolB inhibited NF-κB activity, whereas it did not affect Smad activity (Figure 3D). On the other hand, SchB suppressed both NF-κB and Smad activity (Figure 3E). Co-treatment of SolB and SchB was not shown any additive effects on Smad activity (Figure 3F).

To determine the molecular mechanisms of SolB and SchB action on NF-κB activity, we examined the phosphorylation level of IκBα and IKKα/β in A7r5 cells. TGFβ1 elevated the phosphorylation levels of IκBα and IKKα/β and concomitantly reduced those of total IκBα (Figure 4A and 4B). Under the same condition, SolB



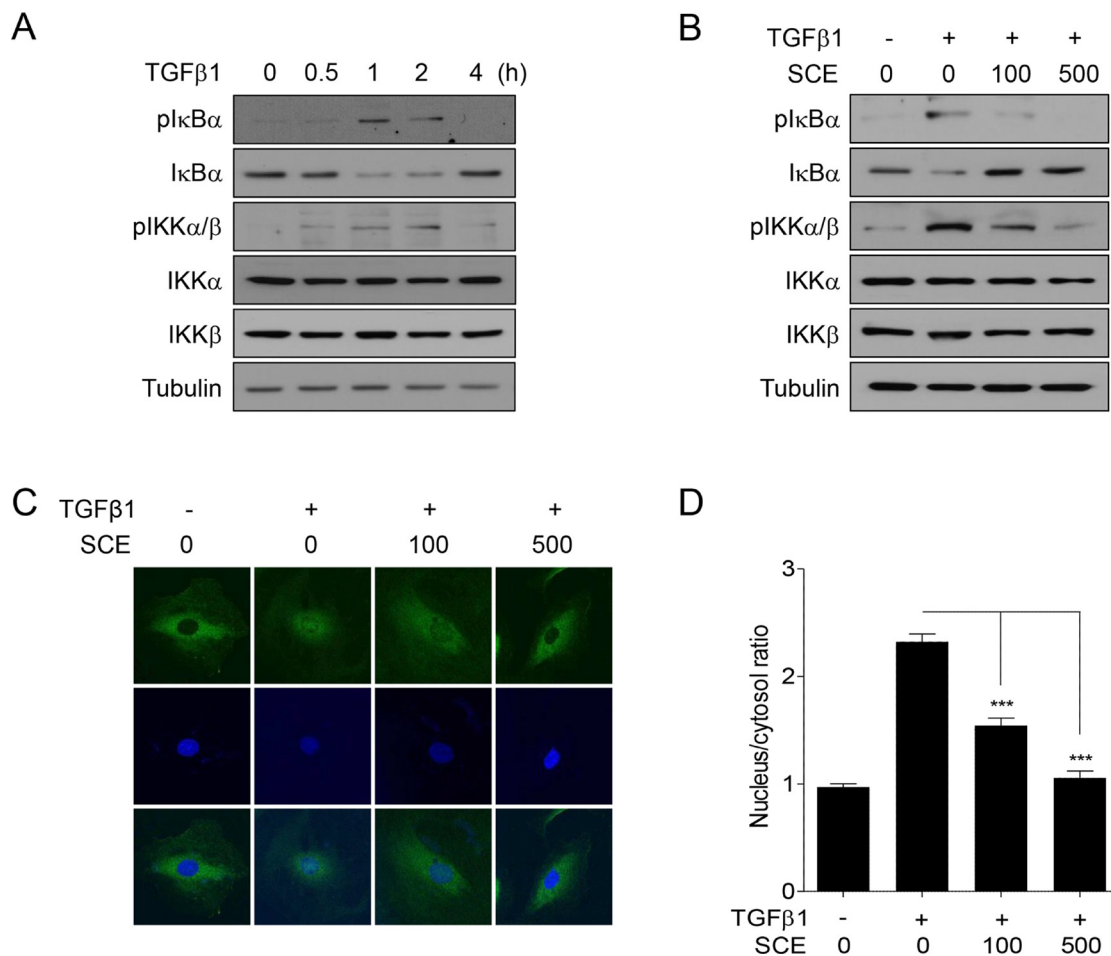
**Figure 1: SCE inhibits TGFβ1-induced NF-κB activation in A7r5 cells.** The cells were transfected with 3TP-PAI1-Luc (A) or 3xκB-Luc (B) reporter constructs and then treated with TGFβ1 (1 ng/ml) and/or SCE (100 or 500 mg/ml) for 24 h. The luciferase activity was expressed as a relative value compared to that of the untreated cells which was set to 100%. The data were expressed as the mean ± SEM (n = 3–5). \*\*\*p < 0.005. (C) The heatmap shows SCE-regulated NF-κB target genes in TGFβ-treated cells.

and SchB reversed these TGFβ1-induced molecular changes (Figure 4A and 4B). But the phosphorylation of Smad3 was not reversed by SolB (Figure 4A). These results were further confirmed by confocal microscopic analysis. As presented in Figure 4C and 4D, SolB and SchB inhibited TGFβ1-induced nuclear translocation of NF-κB in A7r5 cells.

To test whether SolB and SchB could affect the production of NF-κB-regulated profibrotic gene expression and -cytokine, we checked expression of collagen I, fibronectin, and secretion of Interleukin (IL)-6. SolB and SchB inhibited TGFβ1-induced expression of collagen I and fibronectin in dose-dependent manner (Figure 5A and 5B). And SolB and SchB were significantly decreased of the secretion of IL-6 (Figure 5C). These results demonstrate that SolB and SchB inhibit TGFβ1-induced NF-κB activation and its target gene expression.

### Smad activity is irrelevant to NF-κB activity in TGFβ1-treated A7r5 cells

We found that SolB and SchB have different pharmacologic effects on Smad and NF-κB activity (Figure 3). Based on these observations, we investigated whether Smad activity affects NF-κB activity in TGFβ1-treated cells. We first examined the effect of Smad3-DN or siSmad3 on NF-κB activity. Both Smad3-DN and siSmad3 inhibited Smad-mediated luciferase activity in TGFβ1-treated cells (Figure 6A and 6B). In contrast, they did not affect NF-κB-mediated luciferase activity (Figure 6C and 6D). In addition, they did not influence on the levels of phospho- and total IκBα (Figure 6E and 6F). These results indicate that TGFβ1-induced NF-κB activation is independent of Smad activity. In addition, our findings suggest that SolB and SchB suppress TGFβ1-induced NF-κB activation by inhibiting Smad-independent IKK pathway.



**Figure 2: SCE inhibits TGFβ1-induced IKK activation and IκBα degradation in A7r5 cells.** The cells were treated with TGFβ1 (1 ng/ml) and/or SCE (100 or 500 mg/ml) for the indicated times (A) or for 1 h (B) prior to western blot analysis. (C) The cells were treated with TGFβ1 (1 ng/ml) and/or SCE (100 or 500 mg/ml) for 1 h prior to confocal microscopy. The subcellular localization of p65 was assessed using anti-p65 antibody and FITC-conjugated IgG antibody. DAPI was used to visualize the nucleus. (D) The nuclear/cytoplasmic ratio of p65 was measured in at least 15 independent fields ( $n = 4$ ). The data were expressed as the mean  $\pm$  SEM. \*\*\* $p < 0.005$ .

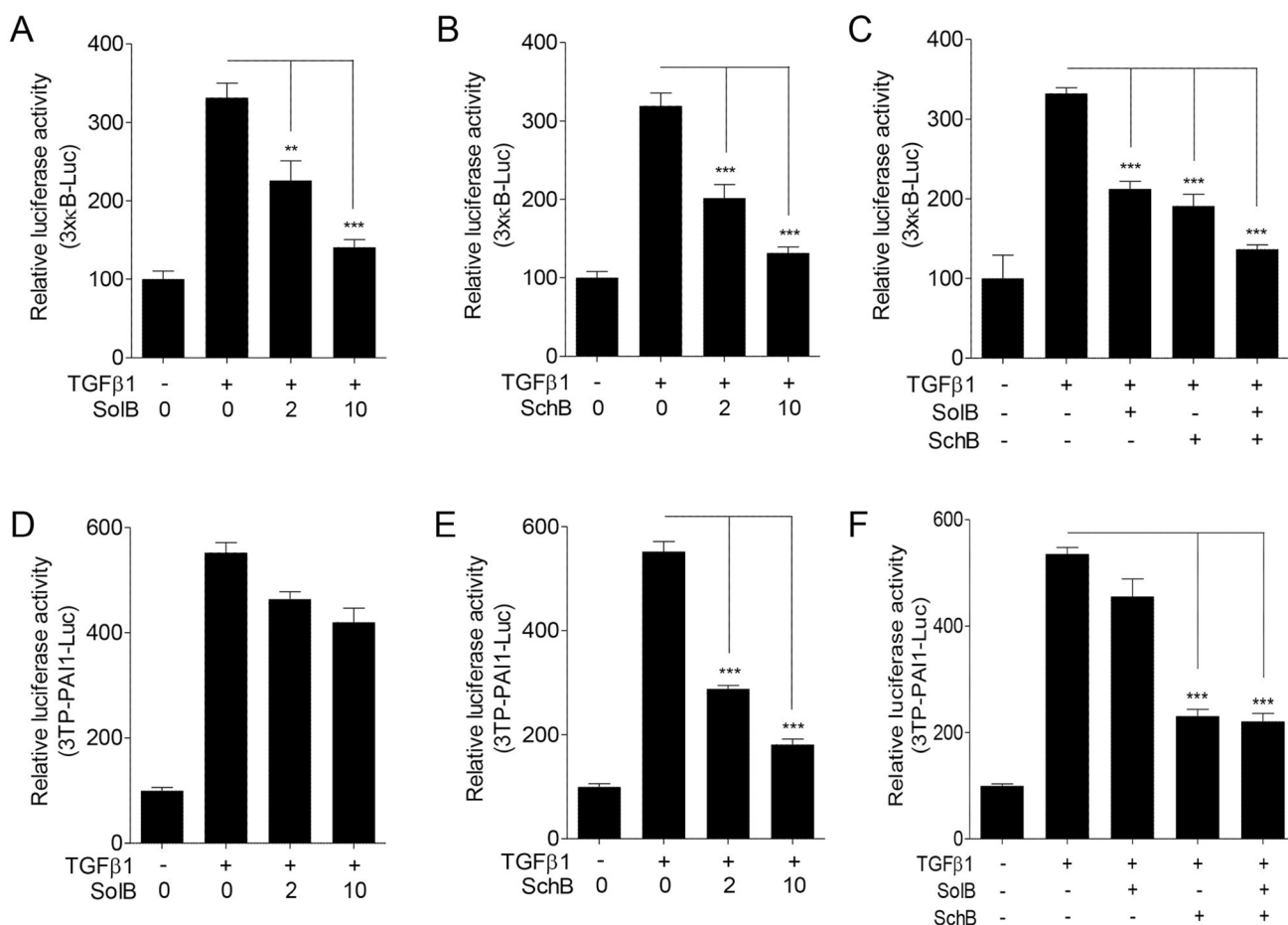
## DISCUSSION

Aberrant regulation of TGF $\beta$ 1 signaling underlies the pathogenesis of vascular fibrotic diseases, including atherosclerosis and restenosis. We have reported that SCE and its active ingredient SchB inhibit TGF $\beta$ 1-induced Smad activation and myosin light chain phosphorylation [33, 34]. In this study, we found that SCE inhibits TGF $\beta$ 1-induced NF- $\kappa$ B activation. Among the active ingredients of SCE tested, SolB and SchB most potently suppressed TGF $\beta$ 1-induced NF- $\kappa$ B activation by inhibiting the Smad-independent IKK pathway. Our study broadens understanding of the molecular mechanisms by which SCE and its active ingredients inhibit TGF $\beta$ 1-induced phenotypes of VSMCs.

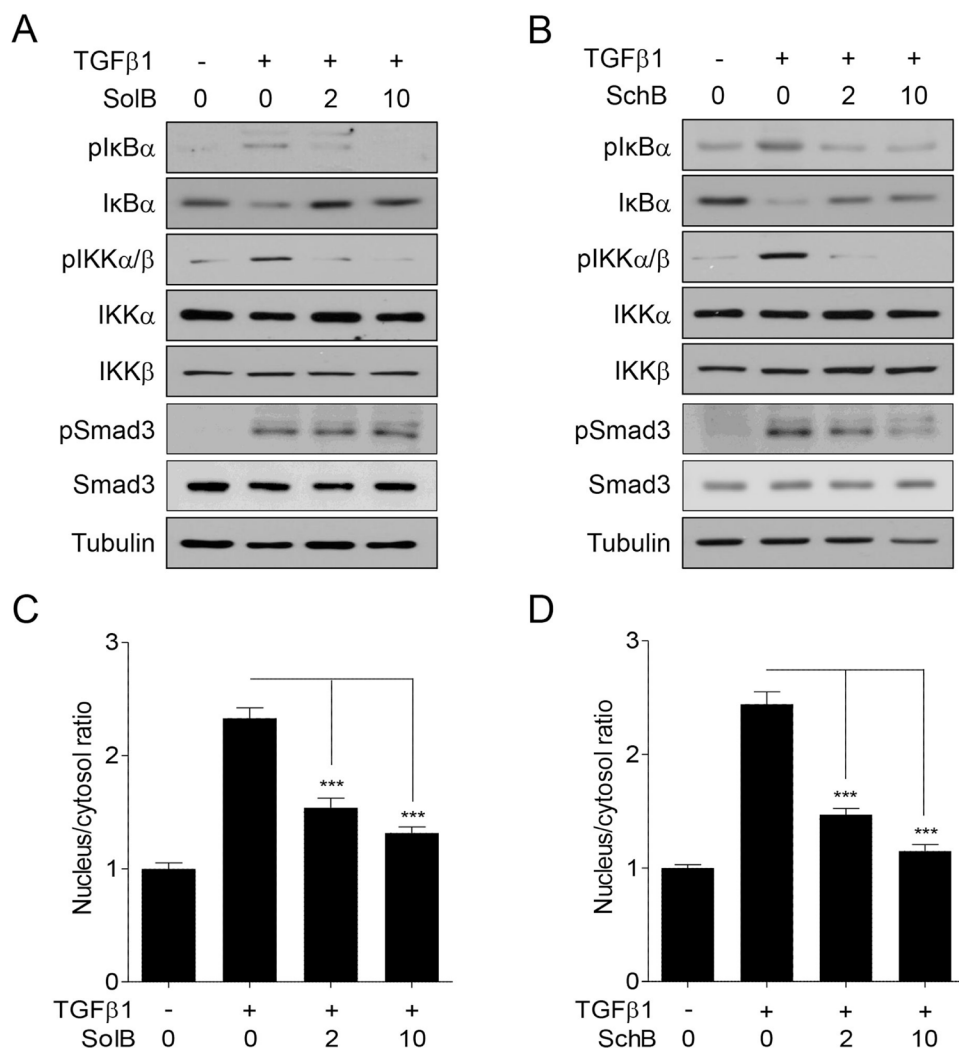
TGF $\beta$ 1 controls a variety of signaling molecules via the Smad-dependent or -independent mechanisms. We have shown that SCE and its ingredients exert their pharmacologic effects by inhibiting canonical and non-canonical pathways of TGF $\beta$ 1 signaling [33, 34]. Interestingly, SolB and SchB have different pharmacologic activity on TGF $\beta$ 1 signaling Figure 3).

SolB inhibited TGF $\beta$ 1-induced NF- $\kappa$ B activation, but not Smad. In contrast, SchB suppressed both Smad and NF- $\kappa$ B in TGF $\beta$ 1 signaling pathways. These results indicate that NF- $\kappa$ B activity does not affect Smad activity in TGF $\beta$ 1-treated cells. In addition, we demonstrated that Smad does not affect TGF $\beta$ 1-mediated NF- $\kappa$ B activity (Figure 6). Therefore, our findings demonstrate that Smad and NF- $\kappa$ B are unrelated to each other in TGF $\beta$ 1-treated VSMCs and that SCE and its constituents inhibit canonical and non-canonical signaling of TGF $\beta$ 1 via a separate mechanism.

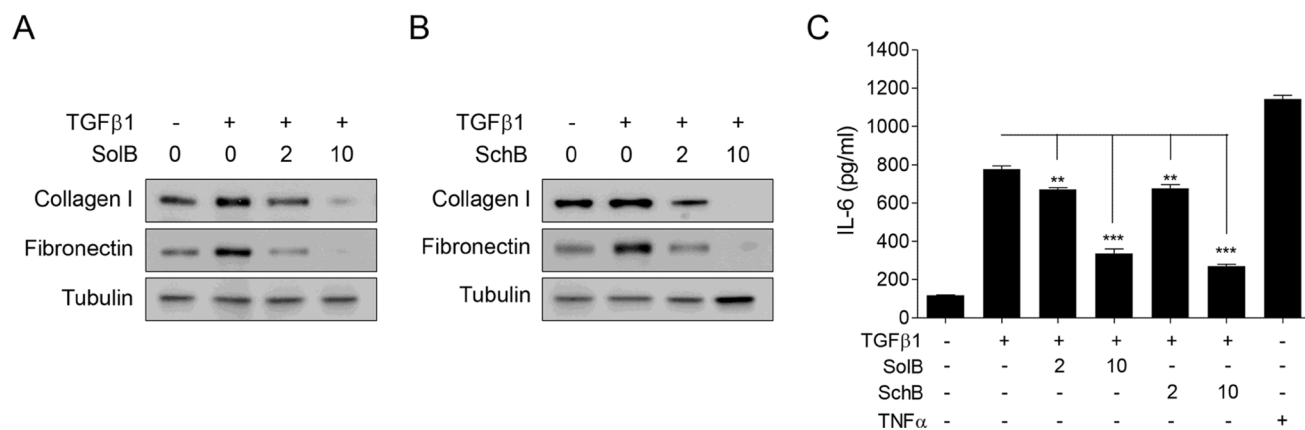
NF- $\kappa$ B plays a pleiotropic role in a range of cellular processes, such as cell survival, proliferation, inflammation, and cell invasion, in response to various extracellular stimuli [11, 12, 38]. Therefore, NF- $\kappa$ B has been considered as a promising a therapeutic target for treatment of cancer and inflammatory diseases [11, 20, 39–41]. Particularly, NF- $\kappa$ B has been known to mediate pathogenic functions in the development of fibrotic diseases [17, 42]. Here, we found that SCE and its ingredients suppress NF- $\kappa$ B activity by inhibiting IKK activation and thereby I $\kappa$ B $\alpha$  phosphorylation and



**Figure 3: SolB and SchB inhibit TGF $\beta$ 1-induced NF- $\kappa$ B activation in A7r5 cells.** The cells were transfected with 3xkB-Luc (A–C) or 3TP-PAI1-Luc (D–F) reporter constructs and then treated with TGF $\beta$ 1 (1 ng/ml) and/or SolB (2 or 10  $\mu$ M) or SchB (2 or 10  $\mu$ M) for 24 h. The luciferase activity was expressed as a relative value compared to that of the untreated cells which was set to 100%. The data were expressed as the mean  $\pm$  SEM ( $n = 4$ ). \*\* $p < 0.01$ , \*\*\* $p < 0.005$ .



**Figure 4: SolB and SchB inhibit TGFβ1-induced IKK activation and IκBα degradation in A7r5 cells.** The cells were treated with TGFβ1 (1 ng/ml) and/or SolB (2 or 10 μM) or SchB (2 or 10 μM) for 1 h prior to western blot analysis (A, B) or confocal microscopy (C, D). The nuclear/cytoplasmic ratio of p65 was measured in at least 15 independent fields ( $n = 4$ ). The data were expressed as the mean  $\pm$  SEM. \*\*\* $p < 0.005$ .



**Figure 5: SolB and SchB inhibit TGFβ1-induced NF-κB target gene production in A7r5 cells.** The cells were stimulated with TGFβ1 (1 ng/ml) and/or SolB (2 or 10 μM) or SchB (2 or 10 μM) for 48 h prior to western blot analysis (A–C). (C) For IL-6 measurement, the medium was collected at 48 h after treatment. TNFα (10 ng/ml) used as a positive control for NF-κB activation. IL-6 level was determined by ELISA assay kit according to the manufacturer's instruction. The data were expressed as the mean  $\pm$  SEM ( $n = 4$ ). \*\* $p < 0.01$ , \*\*\* $p < 0.005$ .

NF- $\kappa$ B nuclear translocation. These results suggest that SCE and its active constituents may be useful to treat a range of NF- $\kappa$ B-mediated diseases.

In summary, the present study demonstrated that SCE and its ingredients SolB and SchB inhibit TGF $\beta$ 1-induced NF- $\kappa$ B activation in VSMCs. Our results provide a scientific basis for future investigation aiming at understanding and treating TGF $\beta$ 1-induced vascular fibrotic diseases.

## MATERIALS AND METHODS

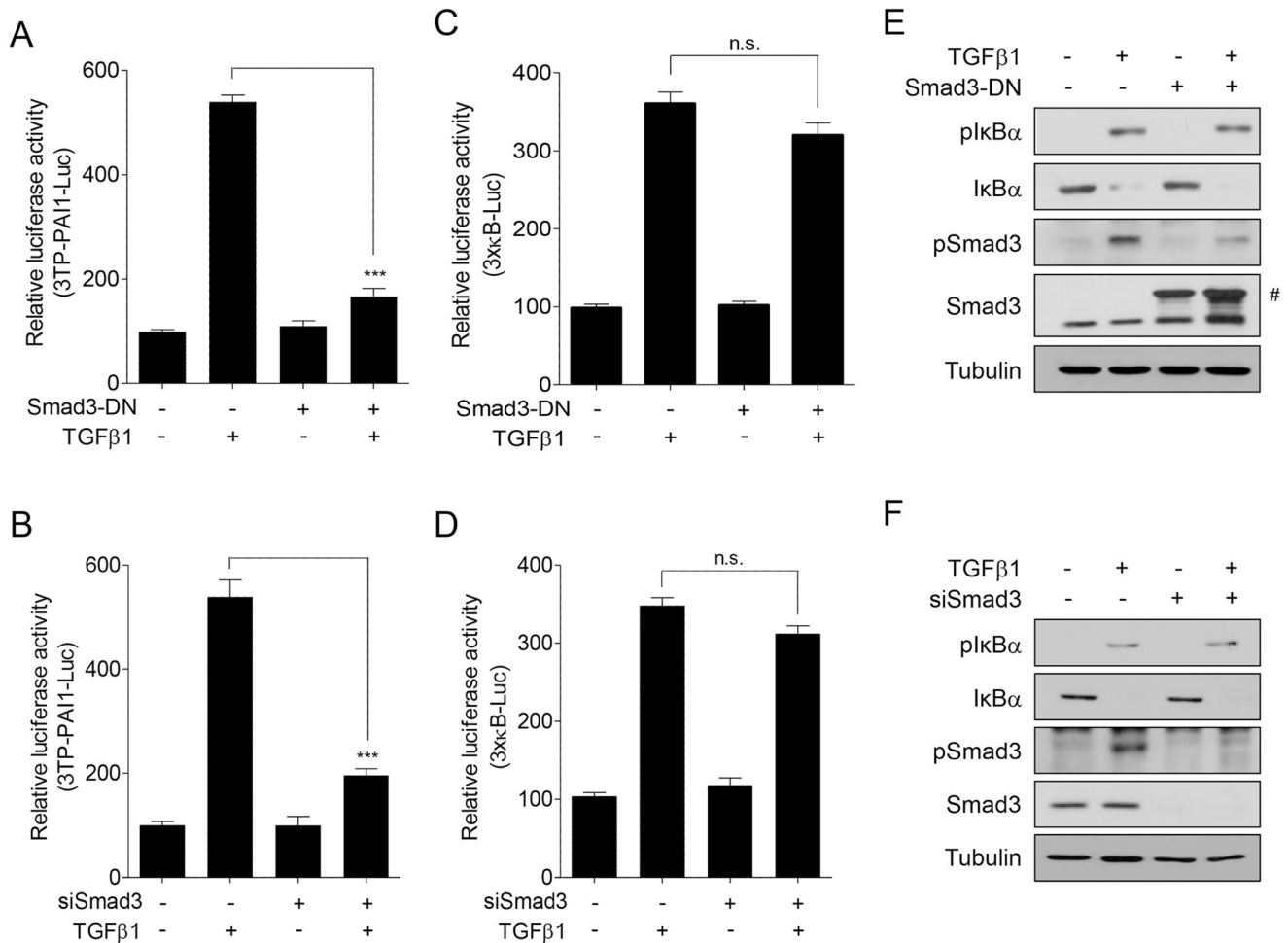
### Cell culture and reagents

The A7r5 rat aortic smooth muscle cell line was obtained from ATCC (CRL -1444). Cells were cultured in DMEM supplemented with 10% fetal bovine serum, penicillin (100 U/ml), and streptomycin (100  $\mu$ g/ml). Prior

to treatment with TGF $\beta$ 1 (R&D Systems, Minneapolis, MN), cells were maintained in DMEM containing 0.2% FBS for 2 h. All cell culture agents were purchased from Hyclone (Logan, UT) or Gibco (Grand Island, NY). SCE and its constituents were prepared as described in our papers [33, 34, 43]. All other reagents not specified were supplied by Sigma-Aldrich (St. Louis, MO).

### Microarray experiment and computational analysis

Microarray experiments were performed using the cells treated with 100 mg/ml SCE for 24 h as described in our previous papers [44–46]. The microarray data, which are available through the Gene Expression Omnibus (GEO) database (accession number GSE87439), were normalized using single-channel array normalization (SCAN) method, which is efficient to reduce array-



**Figure 6: Smad activity is irrelevant to NF- $\kappa$ B activity in TGF $\beta$ 1-treated A7r5 cells.** The cells were transfected with 3TP-PAI1-Luc (A, B) or 3 $\times$  $\kappa$ B-Luc (C, D) reporter constructs. Under the condition, the cells were co-transfected with Smad3-DN (A and C) or siSmad3 (B and D). The transfected cells were further treated with TGF $\beta$ 1 (1 ng/ml) for 24 h. The luciferase activity was expressed as a relative value compared to that of the untreated cells which was set to 100%. The data were expressed as the mean  $\pm$  SEM ( $n = 4$ ). \*\*\* $p < 0.005$ . n.s., not significant. (E, F) The cells were transfected with Smad3-DN or siSMAD3 for 48 h and then treated with TGF $\beta$ 1 (1 ng/ml) for 1 h prior to western blot analysis. #GFP-Smad3.

specific background for standardization of individual probe-level data [45, 47]. Microarray probes were mapped to 13,877 genes using a custom mapping file, Rat2302\_Rn\_ENTREZG (version 19.0.0) which is provided by the BrainArray resource (<http://brainarray.mbni.med.umich.edu/brainarray/>). The Significance Analysis of Microarrays (SAM) analysis was carried out to identify differentially expressed genes (DEGs) among 314 NF- $\kappa$ B target genes ([http://www.bu.edu/NF- \$\kappa\$ B/gene-resources/target-genes/](http://www.bu.edu/NF-kB/gene-resources/target-genes/)). A tuning parameter, delta of 0.4, optimized the cutoff for significance with the estimation of false discovery rate (FDR) threshold  $q$ -value of 0.01.

## Transfection

Cells were transfected with 100 nM siRNA against Smad3 (siSmad3) for 48 h [48] using Lipofectamine RNAiMAX reagent (Invitrogen, Karlsruhe, Germany). The siRNAs were purchased from Qiagen (Hilden, Germany). Cells were also transfected with the dominant negative mutant of Smad3 (Smad3-DN) in pEGFP-N1 [49] using FuGENE 6 according to the manufacturer's protocol (Roche, Mannheim, Germany)

## Luciferase assay

Cells were transfected with 3 $\times$  $\kappa$ B-Luc [50] or 3TP-PAI1-Luc [33] reporter gene plasmids using FuGENE 6. At 24 h after transfection, the cells were incubated with TGF $\beta$ 1, SCE, and/or its active ingredients for 24 h. The cells were harvested and assayed for luciferase activity using a commercial kit (Promega, Madison, WI). The luciferase activity was normalized to  $\beta$ -galactosidase activity.

## Western blot analysis

Antibodies against pI $\kappa$ B $\alpha$ <sup>S32/36</sup>, I $\kappa$ B $\alpha$ , pIKK $\alpha$ / $\beta$ <sup>S176/180</sup>, IKK $\alpha$ / $\beta$ , pSmad3<sup>S423/425</sup>, and Smad3 were obtained from Cell Signaling Technology (Beverly, MA). Anti-collagen I, anti-fibronectin, and anti-tubulin antibodies were purchased from abcam (Cambridge, UK), Santa Cruz Biotechnology (Santa Cruz, CA), and Sigma-Aldrich, respectively. The crude extracts were resolved in 6–10% SDS-PAGE gels and probed with the indicated antibodies. The data shown are representative of at least three independent experiments. Quantification for Western blots is shown in Supplementary Figure 3.

## Confocal microscopy

Cells were grown on glass coverslips in 12-well plates. After cells were treated with TGF $\beta$ 1, SCE, SolB, and/or SchB for 1 h, the cells were fixed with 3.7% formaldehyde in PBS for 10 min, permeabilized with 0.1% Triton X-100 for 5 min, and blocked with 5% normal goat serum in PBS for 30 min. The cells were labeled with anti-p65/RelA antibody (Santa Cruz, CA) for overnight at

4°C and then probed with FITC-conjugated anti-rabbit IgG antibody (Invitrogen) and DAPI (Roche) for additional 1 h at RT. The cells were photographed using the FluoView 1000 confocal microscope (Olympus, Tokyo, Japan).

## Interleukin (IL)-6 measurements

A7r5 cells ( $1.2 \times 10^4$ ) cultured in 12-well plates. Cells were treated with TGF $\beta$ 1 with or without SolB or SchB for 24 h after then cells were starved in DMEM containing 0.2% FBS. Then the cultured medium collected. IL-6 concentrations were determined by ELISA assay kit according to the manufacturer's instructions (R&D Systems).

## Statistical analysis

All data are expressed as mean  $\pm$  SEM. Comparison of means among experimental groups was carried out with ANOVA followed by a post hoc test.  $p < 0.05$  was considered statistically significant.

## Author contributions

J.N.C., S.P., S.L., J.-K.K., and M.K. conducted the experiments; I.S., E.-J.P., H.K.K., J.K.P. contributed new materials/analytic tools; and J.N.C., S.P., S.L., and J.-H.J. designed the experiments; J.N.C., S.P., and J.-H.J. wrote the paper.

## ACKNOWLEDGMENTS

We are grateful to Ms. Min-Ji Kim and Prof. Jeong Han Kim (Bio-Medical Arts and Design Education Center, Department of Contemporary Art, College of Fine Art, Seoul Women's University) for preparation of the Graphic summary in Supplementary Figure 4.

## CONFLICTS OF INTEREST

None declared.

## FUNDING

This work was supported by a grant from the Korea Healthcare Technology R&D Project, Ministry for Health and Welfare, Korea (HI13C1635) and the Brain Korea 21PLUS program from the Seoul National University College of Medicine.

## REFERENCES

1. Leask A, Abraham DJ. TGF- $\beta$  signaling and the fibrotic response. *FASEB J*. 2004; 18:816–827.
2. Santibanez JF, Quintanilla M, Bernabeu C. TGF- $\beta$ /TGF- $\beta$  receptor system and its role in physiological



- and pathological conditions. *Clin Sci (Lond)*. 2011; 121:233–251.
3. Meng XM, Nikolic-Paterson DJ, Lan HY. TGF- $\beta$ : the master regulator of fibrosis. *Nat Rev Nephrol*. 2016; 12:325–338.
  4. McCaffrey TA. TGF- $\beta$  signaling in atherosclerosis and restenosis. *Front Biosci (Schol Ed)*. 2009; 1:236–245.
  5. Ruiz-Ortega M, Rodriguez-Vita J, Sanchez-Lopez E, Carvajal G, Egido J. TGF- $\beta$  signaling in vascular fibrosis. *Cardiovasc Res*. 2007; 74:196–206.
  6. Lan TH, Huang XQ, Tan HM. Vascular fibrosis in atherosclerosis. *Cardiovasc Pathol*. 2013; 22:401–407.
  7. Rensen SS, Doevendans PA, van Eys GJ. Regulation and characteristics of vascular smooth muscle cell phenotypic diversity. *Neth Heart J*. 2007; 15:100–108.
  8. Fisher SA. Vascular smooth muscle phenotypic diversity and function. *Physiol Genomics*. 2010; 42A:169–187.
  9. Gomez D, Owens GK. Smooth muscle cell phenotypic switching in atherosclerosis. *Cardiovasc Res*. 2012; 95:156–164.
  10. Tsai S, Hollenbeck ST, Ryer EJ, Edlin R, Yamanouchi D, Kundi R, Wang C, Liu B, Kent KC. TGF- $\beta$  through Smad3 signaling stimulates vascular smooth muscle cell proliferation and neointimal formation. *Am J Physiol Heart Circ Physiol*. 2009; 297:H540–549.
  11. Baud V, Karin M. Is NF- $\kappa$ B a good target for cancer therapy? Hopes and pitfalls. *Nat Rev Drug Discov*. 2009; 8:33–40.
  12. Oeckinghaus A, Ghosh S. The NF- $\kappa$ B family of transcription factors and its regulation. *Cold Spring Harb Perspect Biol*. 2009; 1:a000034.
  13. Karin M. NF- $\kappa$ B as a critical link between inflammation and cancer. *Cold Spring Harb Perspect Biol*. 2009; 1:a000141.
  14. Lawrence T. The nuclear factor NF- $\kappa$ B pathway in inflammation. *Cold Spring Harb Perspect Biol*. 2009; 1:a001651.
  15. Basseres DS, Baldwin AS. Nuclear factor- $\kappa$ B and inhibitor of  $\kappa$ B kinase pathways in oncogenic initiation and progression. *Oncogene*. 2006; 25:6817–6830.
  16. Karin M, Cao Y, Greten FR, Li ZW. NF- $\kappa$ B in cancer: from innocent bystander to major culprit. *Nat Rev Cancer*. 2002; 2:301–310.
  17. Van der Heiden K, Cuhlmann S, Luong le A, Zakkar M, Evans PC. Role of nuclear factor  $\kappa$ B in cardiovascular health and disease. *Clin Sci (Lond)*. 2010; 118:593–605.
  18. Baker RG, Hayden MS, Ghosh S. NF- $\kappa$ B, inflammation, and metabolic disease. *Cell Metab*. 2011; 13:11–22.
  19. Zahradka P, Werner JP, Buhay S, Litchie B, Helwer G, Thomas S. NF- $\kappa$ B activation is essential for angiotensin II-dependent proliferation and migration of vascular smooth muscle cells. *J Mol Cell Cardiol*. 2002; 34:1609–1621.
  20. Monaco C, Paleolog E. Nuclear factor  $\kappa$ B: a potential therapeutic target in atherosclerosis and thrombosis. *Cardiovasc Res*. 2004; 61:671–682.
  21. Cheng HS, Njock MS, Khyzha N, Dang LT, Fish JE. Noncoding RNAs regulate NF- $\kappa$ B signaling to modulate blood vessel inflammation. *Front Genet*. 2014; 5:422.
  22. Chung HY, Cesari M, Anton S, Marzetti E, Giovannini S, Seo AY, Carter C, Yu BP, Leeuwenburgh C. Molecular inflammation: underpinnings of aging and age-related diseases. *Ageing Res Rev*. 2009; 8:18–30.
  23. Mehrhof FB, Schmidt-Ullrich R, Dietz R, Scheiderei C. Regulation of vascular smooth muscle cell proliferation: role of NF- $\kappa$ B revisited. *Circ Res*. 2005; 96:958–964.
  24. Zhang H, Wang ZW, Wu HB, Li Z, Li LC, Hu XP, Ren ZL, Li BJ, Hu ZP. Transforming growth factor- $\beta$ 1 induces matrix metalloproteinase-9 expression in rat vascular smooth muscle cells via ROS-dependent ERK-NF- $\kappa$ B pathways. *Mol Cell Biochem*. 2013; 375:11–21.
  25. Jayachandran M, Chandrasekaran B, Namasivayam N. Geraniol attenuates fibrosis and exerts anti-inflammatory effects on diet induced atherogenesis by NF- $\kappa$ B signaling pathway. *Eur J Pharmacol*. 2015; 762:102–111.
  26. Shi Y, Massague J. Mechanisms of TGF- $\beta$  signaling from cell membrane to the nucleus. *Cell*. 2003; 113:685–700.
  27. Massague J. TGF $\beta$  signalling in context. *Nat Rev Mol Cell Biol*. 2012; 13:616–630.
  28. Akhurst RJ, Hata A. Targeting the TGF $\beta$  signalling pathway in disease. *Nat Rev Drug Discov*. 2012; 11:790–811.
  29. Schmierer B, Hill CS. TGF $\beta$ -SMAD signal transduction: molecular specificity and functional flexibility. *Nat Rev Mol Cell Biol*. 2007; 8:970–982.
  30. Zhang YE. Non-Smad pathways in TGF- $\beta$  signaling. *Cell Res*. 2009; 19:128–139.
  31. Freudlsperger C, Bian Y, Contag Wise S, Burnett J, Coupar J, Yang X, Chen Z, Van Waes C. TGF- $\beta$  and NF- $\kappa$ B signal pathway cross-talk is mediated through TAK1 and SMAD7 in a subset of head and neck cancers. *Oncogene*. 2013; 32:1549–1559.
  32. Chun JN, Cho M, So I, Jeon JH. The protective effects of Schisandra chinensis fruit extract and its lignans against cardiovascular disease: a review of the molecular mechanisms. *Fitoterapia*. 2014; 97:224–233.
  33. Park EJ, Chun JN, Kim SH, Kim CY, Lee HJ, Kim HK, Park JK, Lee SW, So I, Jeon JH. Schisandrin B suppresses TGF $\beta$ 1 signaling by inhibiting Smad2/3 and MAPK pathways. *Biochem Pharmacol*. 2012; 83:378–384.
  34. Chun JN, Kim SY, Park EJ, Kwon EJ, Bae DJ, Kim IS, Kim HK, Park JK, Lee SW, Park HH, So I, Jeon JH. Schisandrin B suppresses TGF $\beta$ 1-induced stress fiber formation by inhibiting myosin light chain phosphorylation. *J Ethnopharmacol*. 2014; 152:364–371.
  35. Kang YS, Han MH, Hong SH, Park C, Hwang HJ, Kim BW, Kyoung KH, Choi YW, Kim CM, Choi YH. Anti-inflammatory Effects of Schisandra chinensis (Turcz.) Baill

- Fruit Through the Inactivation of Nuclear Factor- $\kappa$ B and Mitogen-activated Protein Kinases Signaling Pathways in Lipopolysaccharide-stimulated Murine Macrophages. *J Cancer Prev.* 2014; 19:279–287.
36. Dilshara MG, Jayasooriya RG, Kang CH, Lee S, Park SR, Jeong JW, Choi YH, Seo YT, Jang YP, Kim GY. Downregulation of pro-inflammatory mediators by a water extract of *Schisandra chinensis* (Turcz.) Baill fruit in lipopolysaccharide-stimulated RAW 264.7 macrophage cells. *Environ Toxicol Pharmacol.* 2013; 36:256–264.
  37. Guo LY, Hung TM, Bae KH, Shin EM, Zhou HY, Hong YN, Kang SS, Kim HP, Kim YS. Anti-inflammatory effects of schisandrins isolated from the fruit of *Schisandra chinensis* Baill. *Eur J Pharmacol.* 2008; 591:293–299.
  38. Perkins ND. Integrating cell-signalling pathways with NF- $\kappa$ B and IKK function. *Nat Rev Mol Cell Biol.* 2007; 8:49–62.
  39. Yamamoto Y, Gaynor RB. Therapeutic potential of inhibition of the NF- $\kappa$ B pathway in the treatment of inflammation and cancer. *J Clin Invest.* 2001; 107:135–142.
  40. Kim HJ, Hawke N, Baldwin AS. NF- $\kappa$ B and IKK as therapeutic targets in cancer. *Cell Death Differ.* 2006; 13:738–747.
  41. Park MH, Hong JT. Roles of NF- $\kappa$ B in Cancer and Inflammatory Diseases and Their Therapeutic Approaches. *Cells.* 2016; 5.
  42. Gordon JW, Shaw JA, Kirshenbaum LA. Multiple facets of NF- $\kappa$ B in the heart: to be or not to NF- $\kappa$ B. *Circ Res.* 2011; 108:1122–1132.
  43. Kim HK, Bak YO, Choi BR, Zhao C, Lee HJ, Kim CY, Lee SW, Jeon JH, Park JK. The role of the lignan constituents in the effect of *Schisandra chinensis* fruit extract on penile erection. *Phytother Res.* 2011; 25:1776–1782.
  44. Lee S, Park YR, Kim SH, Park EJ, Kang MJ, So I, Chun JN, Jeon JH. Geraniol suppresses prostate cancer growth through down-regulation of E2F8. *Cancer Med.* 2016; 5:2899–2908.
  45. Lee S, Chun JN, Kim SH, So I, Jeon JH. Icilin inhibits E2F1-mediated cell cycle regulatory programs in prostate cancer. *Biochem Biophys Res Commun.* 2013; 441:1005–1010.
  46. Kim SH, Lee S, Piccolo SR, Allen-Brady K, Park EJ, Chun JN, Kim TW, Cho NH, Kim IG, So I, Jeon JH. Menthol induces cell-cycle arrest in PC-3 cells by down-regulating G2/M genes, including polo-like kinase 1. *Biochem Biophys Res Commun.* 2012; 422:436–441.
  47. Tusher VG, Tibshirani R, Chu G. Significance analysis of microarrays applied to the ionizing radiation response. *Proc Natl Acad Sci U S A.* 2001; 98:5116–5121.
  48. Wang ZR, Wang JH, Hu CL, Cao WG, Shen XJ, Wu MY, Shen L, Wu SL. The effect of down-regulation of Smad3 by RNAi on hepatic stellate cells and a carbon tetrachloride-induced rat model of hepatic fibrosis. *Braz J Med Biol Res.* 2011; 44:91–99.
  49. Shin DM, Jeon JH, Kim CW, Cho SY, Lee HJ, Jang GY, Jeong EM, Lee DS, Kang JH, Melino G, Park SC, Kim IG. TGF $\beta$  mediates activation of transglutaminase 2 in response to oxidative stress that leads to protein aggregation. *FASEB J.* 2008; 22:2498–2507.
  50. Jang GY, Jeon JH, Cho SY, Shin DM, Kim CW, Jeong EM, Bae HC, Kim TW, Lee SH, Choi Y, Lee DS, Park SC, Kim IG. Transglutaminase 2 suppresses apoptosis by modulating caspase 3 and NF- $\kappa$ B activity in hypoxic tumor cells. *Oncogene.* 2010; 29:356–367.