

A ketogenic diet supplemented with medium-chain triglycerides enhances the anti-tumor and anti-angiogenic efficacy of chemotherapy on neuroblastoma xenografts in a CD1-nu mouse model

Sepideh Aminzadeh-Gohari¹, René Günther Feichtinger¹, Silvia Vidali¹, Felix Sternberg¹, Tricia Rutherford², Maura O'Donnel², Andrea Stöger-Kleiber², Johannes Adalbert Mayr³, Wolfgang Sperl³ and Barbara Kofler¹

¹ Department of Pediatrics, Laura Bassi Centre of Expertise-THERAPEP, Research Program for Receptor Biochemistry and Tumor Metabolism, Paracelsus Medical University, Salzburg, Austria

² Clinical Nutrition Vitaflo International, Liverpool, United Kingdom

³ Department of Pediatrics, Paracelsus Medical University, Salzburg, Austria

Correspondence to: Barbara Kofler, email: b.kofler@salk.at

Keywords: neuroblastoma, ketogenic diet, medium-chain triglycerides, Warburg effect

Received: June 13, 2017

Accepted: July 31, 2017

Published: August 08, 2017

Copyright: Aminzadeh-Gohari et al. This is an open-access article distributed under the terms of the Creative Commons Attribution License 3.0 (CC BY 3.0), which permits unrestricted use, distribution, and reproduction in any medium, provided the original author and source are credited.

ABSTRACT

Neuroblastoma (NB) is a pediatric malignancy characterized by a marked reduction in aerobic energy metabolism. Recent preclinical data indicate that targeting this metabolic phenotype by a ketogenic diet (KD), especially in combination with calorie restriction, slows tumor growth and enhances metronomic cyclophosphamide (CP) therapy of NB xenografts. Because calorie restriction would be contraindicated in most cancer patients, the aim of the present study was to optimize the KD such that the tumors are sensitized to CP without the need of calorie restriction. In a NB xenograft model, metronomic CP was combined with KDs of different triglyceride compositions and fed to CD1-nu mice *ad libitum*. Metronomic CP in combination with a KD containing 8-carbon medium-chain triglycerides exerted a robust anti-tumor effect, suppressing growth and causing a significant reduction of tumor blood-vessel density and intratumoral hemorrhage, accompanied by activation of AMP-activated protein kinase in NB cells. Furthermore, the KDs caused a significant reduction in the serum levels of essential amino acids, but increased those of serine, glutamine and glycine. Our data suggest that targeting energy metabolism by a modified KD may be considered as part of a multimodal treatment regimen to improve the efficacy of classic anti-NB therapy.

INTRODUCTION

Neuroblastoma (NB) is the second most common extracranial solid malignancy in children, accounting for ~15% of pediatric cancer mortality [1]. Favorable and unfavorable prognoses of NB are classified on the basis of the heterogeneity of genetic changes, histologic features, and patient age [2]. Owing to intense research efforts in NB therapy, including the application of multimodal therapeutic strategies, the survival rate has markedly improved in patients with low- and intermediate-stage NB [3]. However, despite these advances, the outcome for the high-risk NB

group remains poor (< 50% long-term survival) [4]. Standard treatments for high-risk NB patients include several cycles of induction chemotherapy with subsequent surgical resection of the primary tumor. This is followed by high-dose consolidation therapy with autologous hematopoietic stem-cell transplantation and irradiation, and post-consolidation therapy to minimize residual disease [4]. Large numbers of adult survivors of childhood cancer have a high burden of morbidity, caused by side effects of standard cancer therapies that can persist or even develop months or years after treatment. The most commonly reported adverse health outcomes in adult survivors of pediatric malignancy

include impaired pulmonary, auditory, cardiac, endocrine, psychosocial/cognitive and nervous system functions [5-8]. To address this challenge in NB therapy, addition of adjuvant treatment regimens may be opportune to improve the efficacy of anti-NB therapy, minimize its toxicity, and enhance patient quality of life.

In this regard, some key metabolic features of NB may be exploited to open a new less-toxic therapeutic frontier against this cancer. Various research studies have demonstrated that, similar to most solid cancers, NB shows a Warburg effect in energy production; that is, high glucose uptake and a preference to ferment glucose into lactate while only partially using mitochondrial oxidative phosphorylation (OXPHOS) [9-12]. Thus, in comparison to normal cells, a critical metabolic feature of NB is its low content of OXPHOS complexes [13].

Based on the high dependency on glucose and the OXPHOS deficiency in NB, we postulated that we could exploit the Warburg effect in NB cells by using a high-fat, low-carbohydrate or 'ketogenic' diet (KD) as part of a new multimodal NB therapy. Our assumption is that tumor cells exposed to KD would be forced to obtain their energy from fatty acid oxidation through OXPHOS. Because NB cells are less able to use fatty acids for ATP production than normal cells (because of their respiratory chain deficiency), they would have an energetic stress and therefore a survival disadvantage under a KD regimen.

A growing number of preclinical and clinical studies report that dietary intervention by KD is a potent anti-cancer therapy. It has been shown that KD not only improves the treatment efficacy of conventional therapies, but can also be safely applied in cancer patients [14-24]. Several animal studies, especially of brain tumors, demonstrate that KD has considerable anti-tumor effects [25-33], particularly in combination with calorie restriction [19, 34-36]. Part of the effect induced by KD is thought to be through its mimicking of a fasting phenotype via induction of ketosis. *In vivo* evidence shows that short-term starvation or fasting increases the efficacy of chemotherapy in various mouse cancer models [37, 38]. It has also been reported that fasting can ameliorate side effects caused by chemotherapy drug toxicity in patients [39, 40]. In agreement with these findings, our latest studies indicated that calorie restriction enhanced the effect of a long-chain triglycerides (LCT)-based KD on NB growth inhibition and survival in a xenograft model [41]. Additionally, the KD generated an even greater suppression of NB growth when it was combined with metronomic cyclophosphamide (CP) [42].

In particular, advanced-stage cancer patients can experience cancer-induced cachexia, which is an important reason for morbidity and mortality in cancer treatment [43-45]. In view of this phenomenon, calorie restriction therapy does not seem to be feasible for a number of cancer patients [21, 22]. The present study addresses this challenge by focusing on the optimal composition of KD

to avoid calorie restriction as well as to enable lower doses of chemotherapy in NB treatment. Based on multiple benefits of medium-chain triglycerides (MCTs)-containing diets compared to pure long-chain triglycerides (LCTs)-based diets in terms of digestion and metabolism [46-50], we decided to compare the effects of an LCT-based KD versus a KD supplemented with 25% 8- and 10-carbon medium-chain triglycerides (LCT-MCT8 and LCT-MCT10) on metronomic CP therapy of NB xenografts. An MCT-supplemented KD was initially used as a therapeutic tool for refractory epilepsy in 1971 [51] and was first introduced into cancer studies in 1987, in which the diet was able to reverse the cachectic process and reduce the tumor weight in a colon adenocarcinoma model [52]. Only a few studies have since employed MCT-containing KDs for cancer therapy. Preclinical and clinical studies indicate that the diet is feasible in most patients and has anti-tumor effects in animal models [53-58]. In addition, it has been shown that MCTs have a higher anti-inflammatory effect compared to LCTs [50, 59, 60]. LCTs are incorporated first into chylomicrons, and then enter the lymphatic system to be oxidized in the liver. In contrast, MCTs are rapidly absorbed into the portal venous system [46, 47] and subsequently enter cells through phospholipid bilayers without the need of fatty acid transport proteins [48], and are then metabolized by mitochondria independent of carnitine [47].

Our studies reported here also evaluated the effects of the different KDs on blood glucose, ketone bodies and amino acids levels as well as parameters regarding tumor angiogenesis, hypoxia and metabolic stress.

RESULTS

Ketogenic dietary intervention with LCT-MCT8 effectively sensitizes NB xenografts to cyclophosphamide

To elucidate whether the sensitization of NB xenografts to low-dose chemotherapy by KD is influenced by the triglyceride composition, we treated NB-bearing mice with metronomic CP in combination with either an LCT-based KD or MCT-supplemented KDs (LCT-MCT8, LCT-MCT10). As a recent *in vitro* study reported that 10-carbon MCT, but not 8-carbon MCT, induced energy metabolism and mitochondrial activity in SH-SY5Y cells [61], we decided to use KDs either supplemented with 8-carbon or 10-carbon MCTs. Furthermore, we restricted the MCT content to 33% of the total fat content as very high amounts of MCTs in the diet can cause temporary gastrointestinal distress in humans. The daily dose we chose for CP was 40 mg/kg for mice with SH-SY5Y xenografts and 13 mg/kg for mice with SK-N-BE(2) xenografts, which led to a slight deceleration, but not

inhibition, of tumor growth under the control diet (Figure 1, Supplementary Figure 1). Like we reported previously [42], the SK-N-BE(2) xenografts were more sensitive to metronomic CP than were the SH-SY5Y xenografts.

In addition to the delayed growth of the xenografts under metronomic CP, all KDs decelerated tumor growth further (Figure 1A, 1B). The dietary intervention with LCT-MCT8 was the most effective KD, producing significant inhibition of tumor growth in combination with metronomic CP, whereas LCT showed the least anti-NB effect (Figure 1A, 1B). In more detail, LCT-MCT8 induced near-complete growth inhibition of SH-SY5Y xenografts (Figure 1A), and led to tumor regression in 5 out of 11 cases (Supplementary Figure 1). LCT-MCT10

inhibited SH-SY5Y growth significantly over the whole intervention period (Figure 1A), but tumor regression was observed in only 1 of 10 cases (Supplementary Figure 1). LCT-MCT8 was the only KD that produced significant suppression of tumor growth in SK-N-BE(2) xenografts from day 12 till the end of the intervention (Figure 1B), albeit the effect was much less pronounced than the growth suppression on the SH-SY5Y xenografts. Compared to the control diet, intervention with the pure LCT-based KD significantly inhibited growth of the SH-SY5Y xenografts from day 8 to day 26 and reached a significant difference versus SK-N-BE(2) xenografts on day 22 and 26 only (Figure 1A, 1B).

Subsequently, 100% of mice with the SH-SY5Y

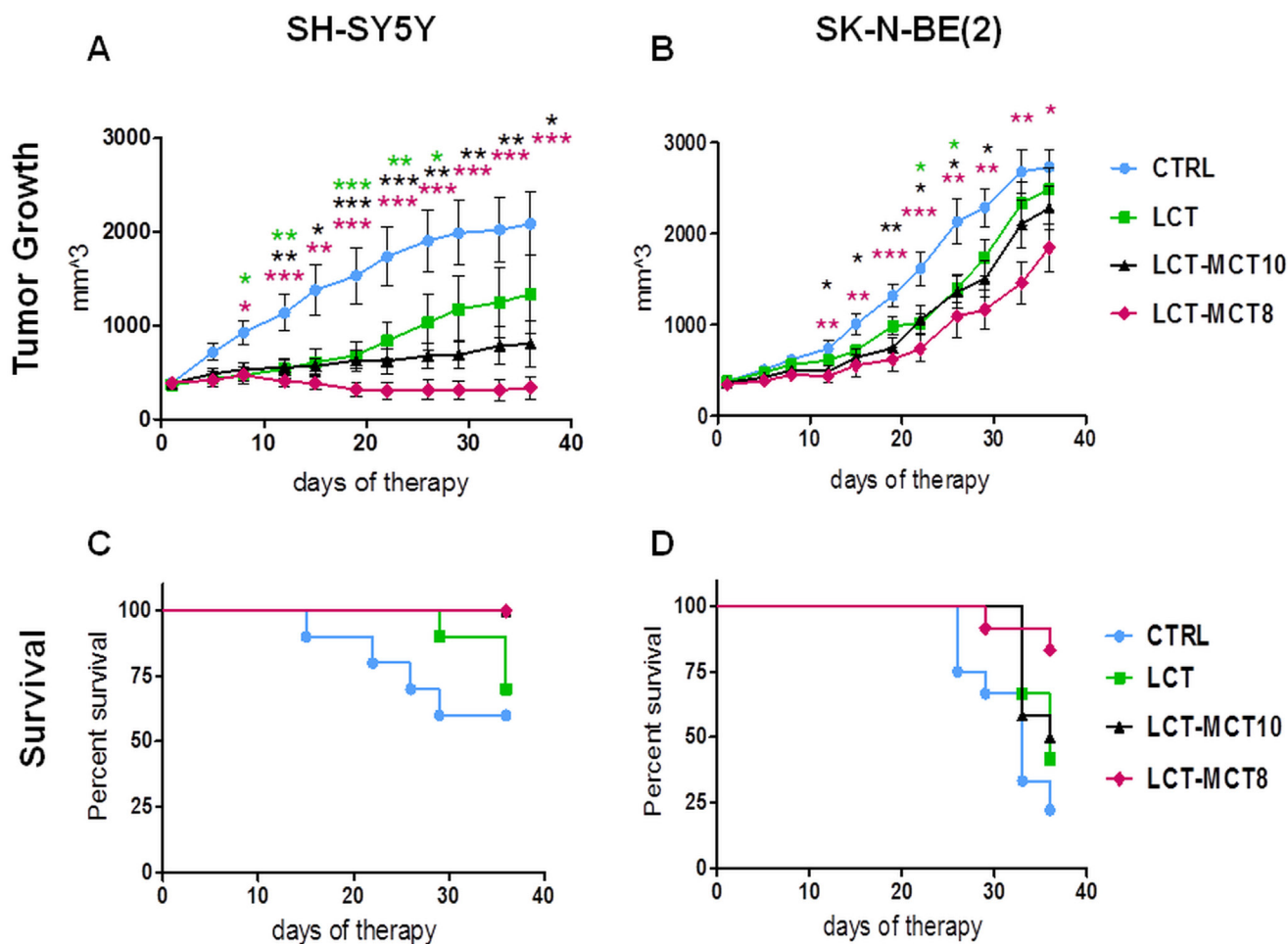


Figure 1: NB growth was most effectively inhibited by metronomic CP in combination with dietary intervention with LCT-MCT8. Growth suppression of **A.** SH-SY5Y and **B.** SK-N-BE(2) xenografts was most pronounced for metronomic CP combined with LCT-MCT8 KD compared to the other KDs and the CTRL diet. Kaplan-Meier survival curves for mice with **C.** SH-SY5Y and **D.** SK-N-BE(2) xenografts indicate prolonged survival of the LCT-MCT8 group. Values are given as mean \pm SEM (CTRL, LCT and LCT-MCT10, $n = 10-12$; LCT-MCT8, $n = 11-12$). One-way ANOVA followed by Dunnett's Multiple Comparison Test; * $p \leq 0.05$; ** $p \leq 0.01$; *** $p \leq 0.001$; KDs in combination with metronomic CP vs CTRL in combination with metronomic CP. The statistical analysis for the survival curves was done with the Log-rank test (Mantel-Cox): SH-SY5Y xenograft, CTRL vs LCT, $p = 0.4$; CTRL vs LCT/MCT8, $p = 0.02$; CTRL vs LCT/MCT10, $p = 0.02$. SK-N-BE(2) xenograft, CTRL vs LCT, $p = 0.09$; CTRL vs LCT/MCT8, $p = 0.002$; CTRL vs LCT/MCT10, $p = 0.07$. When the tumor size reached the termination size some mice had to be sacrificed before the pre-determined end date of the therapeutic intervention. The tumor size data from the last measurement was kept in the calculation for the overall tumor growth rate at later time points.

xenografts survived over 36 days when treated with metronomic CP in combination with LCT-MCT8 or LCT-MCT10, while the survival rate for LCT and CTRL mice was 70% and 60%, respectively (Figure 1C). The survival rate for mice with SK-N-BE(2) xenografts was again highest in the LCT-MCT8 group compared to the other dietary groups. 84% of LCT-MCT8 mice survived the duration of therapy, whereas only 22%, 42% and 50% of mice in the CTRL, LCT and LCT-MCT10 groups, respectively, survived over the same period (Figure 1D).

Effect of dietary intervention on glucose-ketone index

To elucidate the effect of the dietary interventions on ketosis, we measured blood glucose and ketone body levels in the serum of all dietary groups. As expected, the blood glucose level in the KD groups, averaged over

the whole therapy time, showed a significant reduction of about 20% compared to the CTRL group (Figure 2A; Supplementary Figure 3A, 3B). The serum ketone level, measured as the concentration of beta-hydroxybutyrate (BHB) and similarly averaged over the treatment duration, increased by at least 5.6-fold in mice fed the KDs versus the CTRL group (Figure 2B, Supplementary Figure 3C, 3D). The different KD compositions did not elicit significant differences in blood glucose and BHB levels.

The glucose-ketone index (GKI) is regarded as a better indicator of the efficacy of a metabolic therapy [62]. Over the entire period of the dietary intervention, the GKI was significantly reduced ($p < 0.001$) in all KD groups compared to the CTRL group. Again, there was no significant difference in GKI among the different KD compositions.

We observed a decrease in the mean body weight of mice receiving the KDs during the first days of therapy, but this then stabilized and the weight was regained in

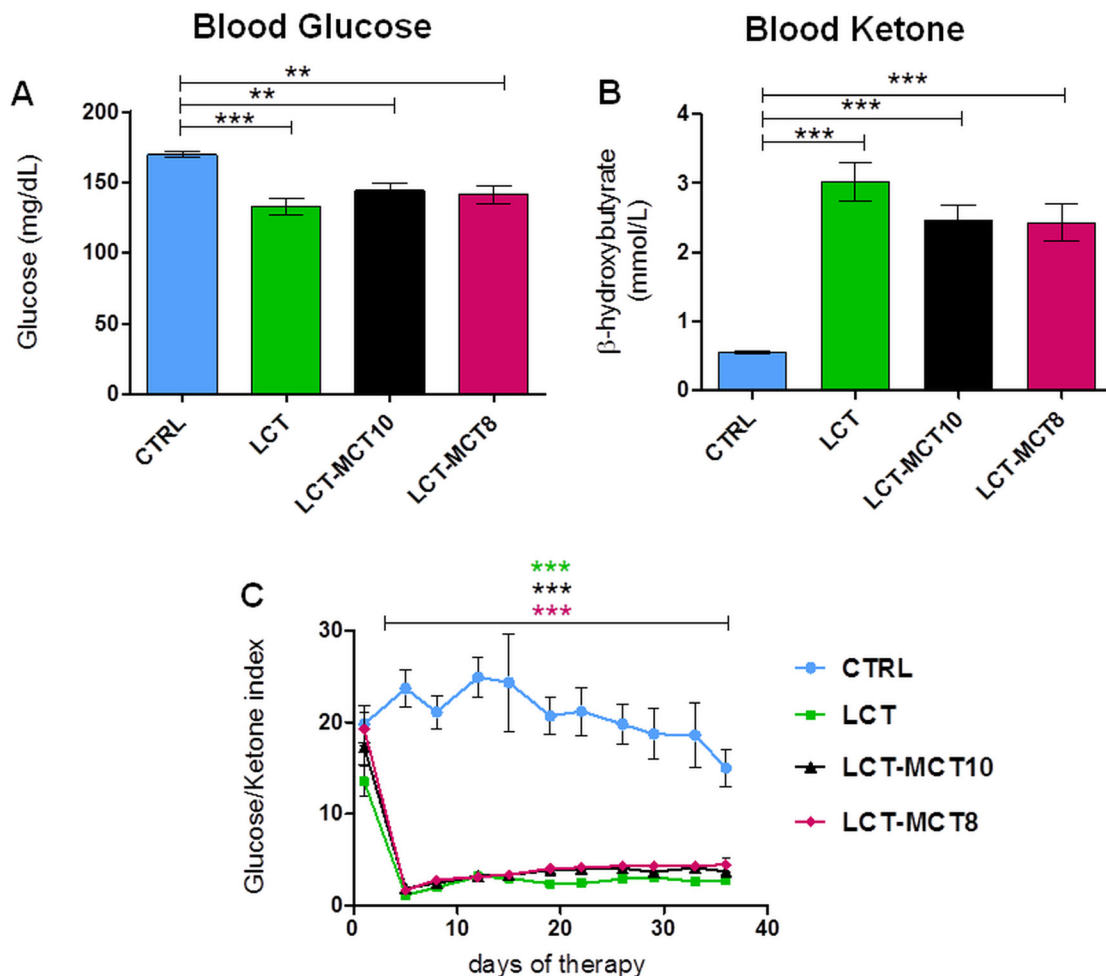


Figure 2: All KDs significantly lowered blood glucose levels and increased blood ketone body levels. A. The mean blood glucose level significantly decreased and B. the mean BHB level significantly increased in KD-treated mice with NB xenografts over the duration of the experiment. C. The ratio of blood glucose to ketone levels was significantly lower in KDs over the duration of the experiment. Values are given as mean \pm SEM (CTRL, LCT and LCT-MCT10, $n = 22$; LCT-MCT8, $n = 23$). One-way ANOVA followed by Dunnett's Multiple Comparison Test; ** $p \leq 0.01$; *** $p < 0.001$; KDs in combination with metronomic CP vs CTRL in combination with metronomic CP.

most animals after 2-3 weeks (Supplementary Table 1; Supplementary Figure 4).

Ketogenic dietary intervention alters amino acid levels and urea cycle metabolites

As the KDs contain only 50% of the protein compared to the CTRL diet (Supplementary Table 1), we tested if the KDs influence the amino acid (AA) levels in plasma and tumor tissues.

Plasma AA measurement showed significantly lower levels of the essential AAs lysine, valine, leucine, isoleucine, threonine and phenylalanine in the KD groups compared to the CTRL group (Figure 3A). Similar changes of essential AAs were detected in the NB xenografts (Figure 3B), with the exception that phenylalanine

levels were found to be similar in all dietary groups, and tryptophan was not detectable in tumors. Among the non-essential amino acids, significantly higher levels of glutamine, serine, and glycine were found in the plasma of the KD groups compared to the CTRL group (Figure 3A; Supplementary Figure 5). However, in the tumors, no differences in non-essential AAs were observed among the various dietary groups (Figure 3B; Supplementary Table 2 and 3).

Urea cycle metabolites were also altered by the KDs (Figure 4). Plasma ammonia levels tended to be lower in the KD groups compared to the CTRL group. The concentration of ammonia was also lower in the tumors of KD-fed mice, reaching significance in the MCT-supplemented groups (Figure 4). Among the four metabolites of the urea cycle, plasma ornithine levels were significantly lower in the KD groups compared to the

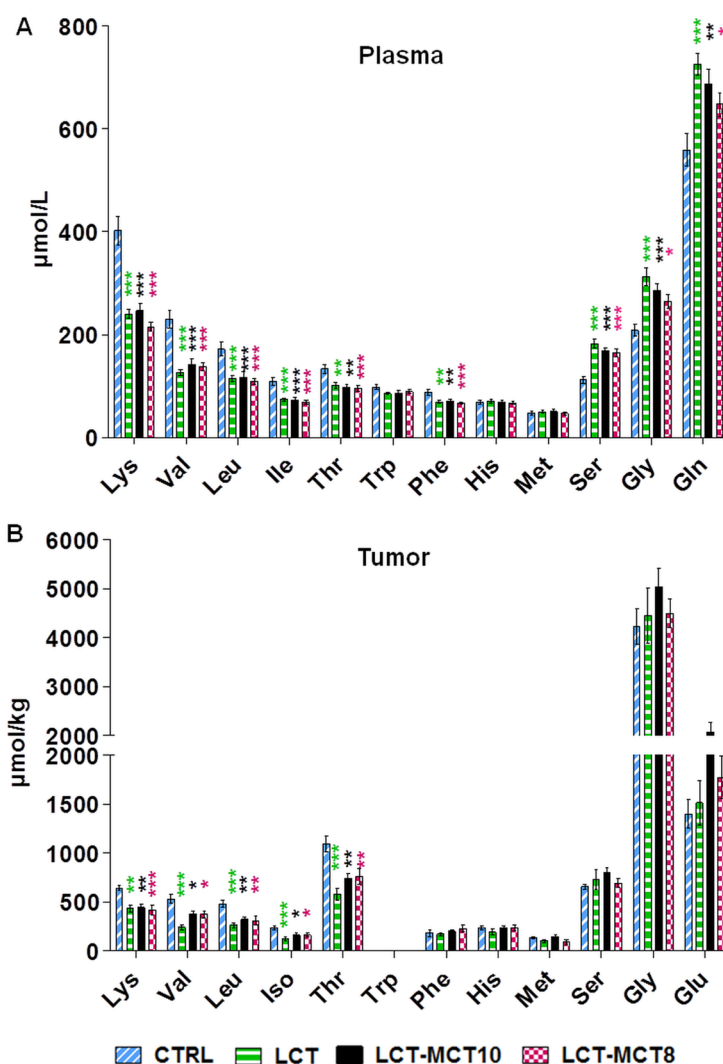


Figure 3: Amino acid levels in plasma and tumor tissue were affected by KDs. Measurement of amino acid levels in **A.** plasma of mice with NB xenografts and in **B.** NB tumors (SK-N-BE(2)) revealed significantly lower levels of several essential amino acids and higher levels of the non-essential amino acids serine, glycine and glutamine in the KD groups. Values are given as mean \pm SEM (plasma, $n = 16$; tumor, $n = 8$). One-way ANOVA followed by Dunnett's Multiple Comparison Test; * $p \leq 0.05$; ** $p \leq 0.01$; *** $p \leq 0.001$; KDs in combination with metronomic CP vs CTRL in combination with metronomic CP. Tryptophan was below the detection limit in tumor tissues.

CTRL group, while citrulline was significantly higher both in plasma and xenografts. Remarkably, in tumor tissues, argininosuccinate, the intermediate between citrulline and arginine in the cycle, was detectable in the KD groups only. Interestingly, arginine levels did not differ in plasma or tumor tissue among the different dietary groups (Figure 4; Supplementary Table 2 and 3).

Low dietary protein does not affect NB growth

The observed changes in plasma and tumor AA levels in the KD groups compared to the CTRL group generated two questions. First, were the altered AA levels in the KD groups caused by cross-talk between fat- and protein-metabolic pathways or were they simply a consequence of the different protein contents in the KD (8%) and CTRL diet (16%). Second, could a lower protein content in the CTRL diet influence NB growth. To answer

these questions, mice with xenografts were treated with metronomic CP and fed two different control diets, one containing 16% (CTRL) and the other 8% (CTRL-8%) protein (Supplementary Table 1). Interestingly, the growth of NB xenografts in mice given either the CTRL or CTRL-8% diet showed no difference, whereas the LCT-MCT8 diet caused inhibition of NB growth like that shown in Figure 1 (Supplementary Figure 2A, 2B). Compellingly, the plasma levels of AAs and urea cycle metabolites of mice exposed to the lower protein content of the CTRL-8% diet did not differ from those of mice fed the CTRL diet (Supplementary Figure 2C, 2D).

Ketogenic dietary intervention promotes the anti-angiogenic effect of cyclophosphamide

An angiogenic phenotype is a key risk factor in poor prognosis in NB, and one we observed especially in the

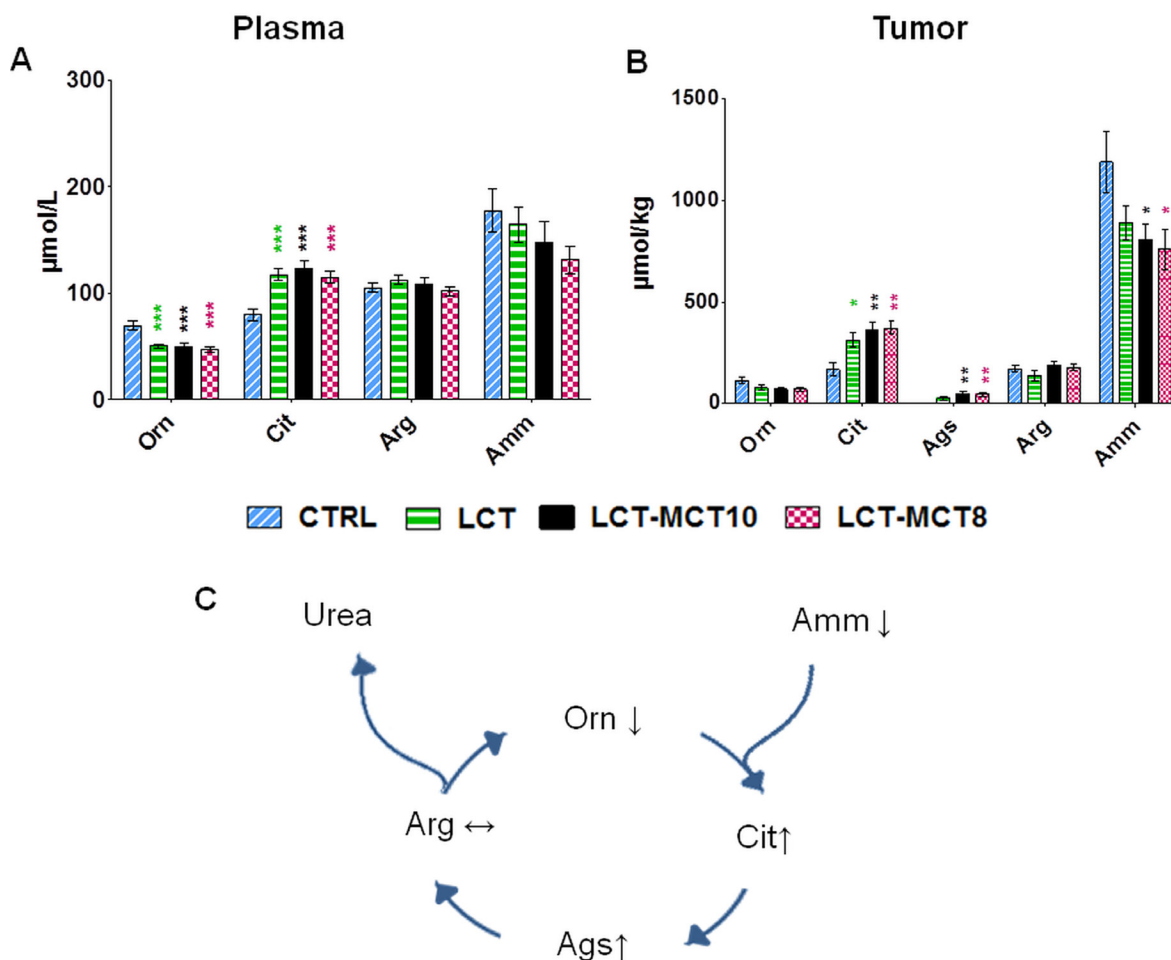


Figure 4: Levels of urea cycle metabolites were altered by KDs. The level of ornithine (Orn) was significantly reduced in the A. plasma of mice with NB xenografts, and the level of citrulline (Cit) was significantly increased in both the A. plasma of mice with NB xenografts and in B. tumor tissue (SK-N-BE(2)), in the KD groups. Argininosuccinate (Ags) was only detectable in tumors of KD-treated mice. Ammonia (Amm) levels were lower in the KD groups compared to the CTRL group. C. Illustration summarizing the changes in urea cycle metabolites induced by KDs. Values are given as mean \pm SEM (plasma, $n = 16$; tumor, $n = 8$). One-way ANOVA followed by Dunnett's Multiple Comparison Test; * $p \leq 0.05$; ** $p \leq 0.01$; *** $p \leq 0.001$; KDs in combination with metronomic CP vs CTRL in combination with metronomic CP.

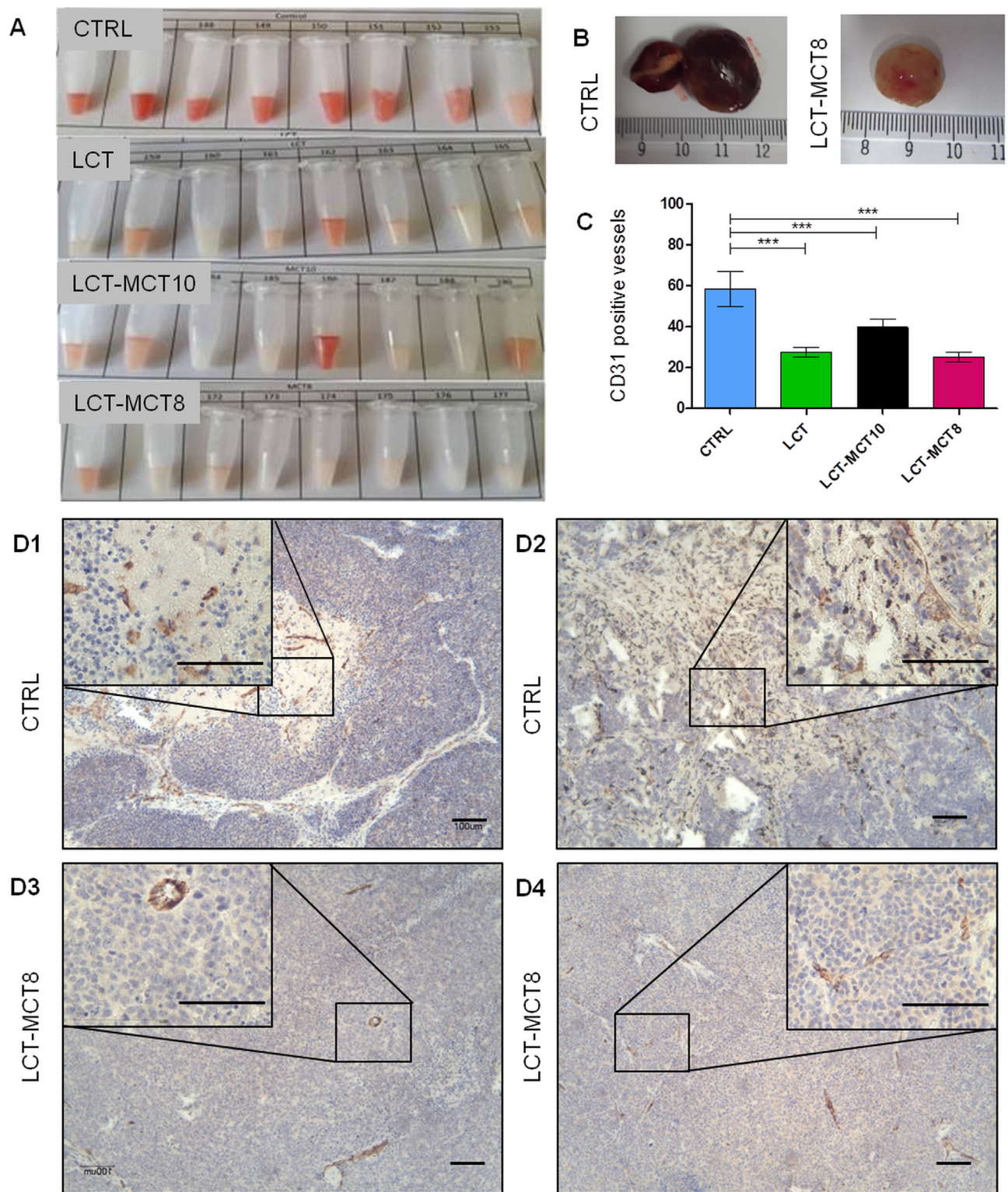


Figure 5: Macroscopic evaluation of intratumoral hemorrhage and microscopic evaluation of tumor vascularization revealed an anti-angiogenic effect of KDs. **A.** SK-N-BE(2) xenograft tumor homogenates and **B.** whole tumors showed lower levels of intratumoral hemorrhage in the KD-treated groups compared to the CTRL group. **C.** Quantification of CD31-positive vessels (counted in five random high-power fields, 100-fold magnification) revealed a significant reduction in vessel density. Representative immunohistochemical staining for the endothelial marker CD-31 in four tumors from the **D1, D2** CTRL and **D3, D4** LCT-MCT8 groups revealed differences in blood vessel morphology and density. Scale bar = 100 μ m. Values are given as mean \pm SEM ($n = 7-12$). One-way ANOVA followed by Dunnett's Multiple Comparison Test; *** $p \leq 0.001$.

SK-N-BE(2) xenografts. All KDs synergistically enhanced the anti-angiogenic efficacy of metronomic CP, with no clear superiority of any one KD. The combination of a KD with metronomic CP strikingly reduced intratumoral hemorrhage in SK-N-BE(2) tumors (Figure 5A, 5B). Quantification of CD31 staining (Figure 5C) revealed a significant reduction of vessel density in the xenografts derived from KD-fed mice compared to CTRL mice. The reduction of angiogenesis was also accompanied by enhanced blood vessel maturation (Figure 5D).

Carbonic anhydrase IX levels are associated with necrosis

Because anti-angiogenic treatment may lead to an increase in hypoxia [63, 64], we analyzed the level of carbonic anhydrase IX (CAIX), a commonly used marker of hypoxia [65, 66]. Immunohistochemical analysis of CAIX indicated no significant difference between SK-N-BE(2) tumors with high vessel density in the CTRL group compared to tumors with less vascularization in the

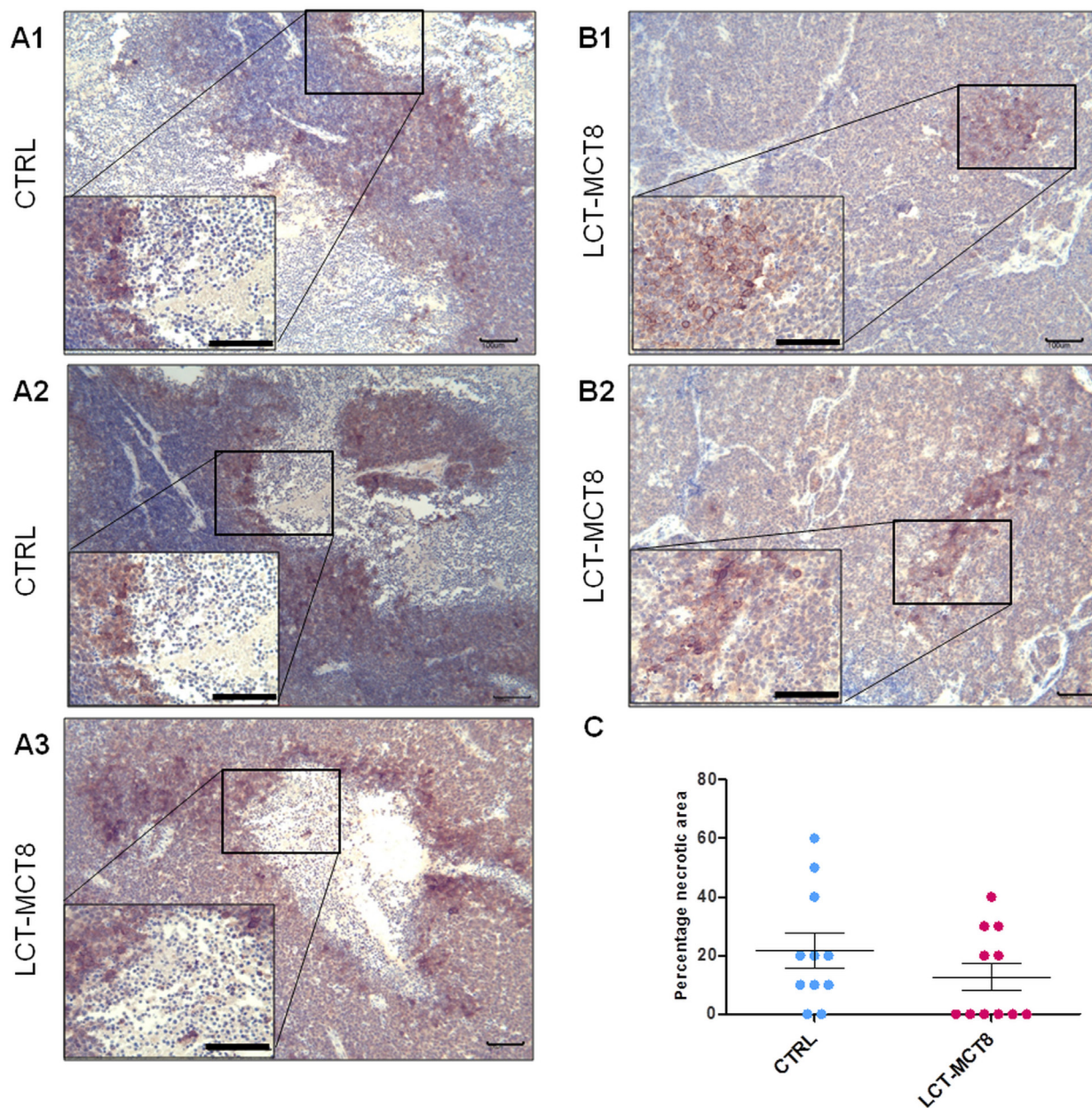


Figure 6: Expression of carbonic anhydrase IX (CAIX) was associated with necrosis. A1.-A3. Immunohistochemical staining for CAIX shows the expression of CAIX at the border of necrotic areas in CTRL and LCT-MCT8 groups. B1., B2. Expression of CAIX in non-necrotic tumors in the LCT-MCT8 KD group was lower and focal. C. The mean of the percentage of necrotic areas in SK-N-BE(2) tumors was higher in the CTRL group compared to the LCT-MCT8 group, although this difference was not significant ($n = 11$). Scale bar = 100 µm.

LCT-MCT8 group. Consistently, expression of CAIX was observed around necrotic areas in both the LCT-MCT8 and CTRL groups (Figure 6A1-6A3).

The number of necrotic tumors was higher in the CTRL (81%) than in the LCT-MCT8-fed group (45%) (Figure 6C). Focal expression of CAIX was observed mainly in the smaller and non-necrotic tumors of the LCT-MCT8 group (Figure 6B1, 6B2).

Ketogenic dietary intervention gives rise to energy stress in NB

Due to OXPHOS deficiency and a low capability of ketone body utilization in NB [41], it is expected that KDs will induce a bioenergetic challenge for tumors, but not for normal tissue. To address this hypothesis, we evaluated the activation of the cellular energy sensor AMP-activated protein kinase (AMPK) in SK-N-BE(2) tumors from

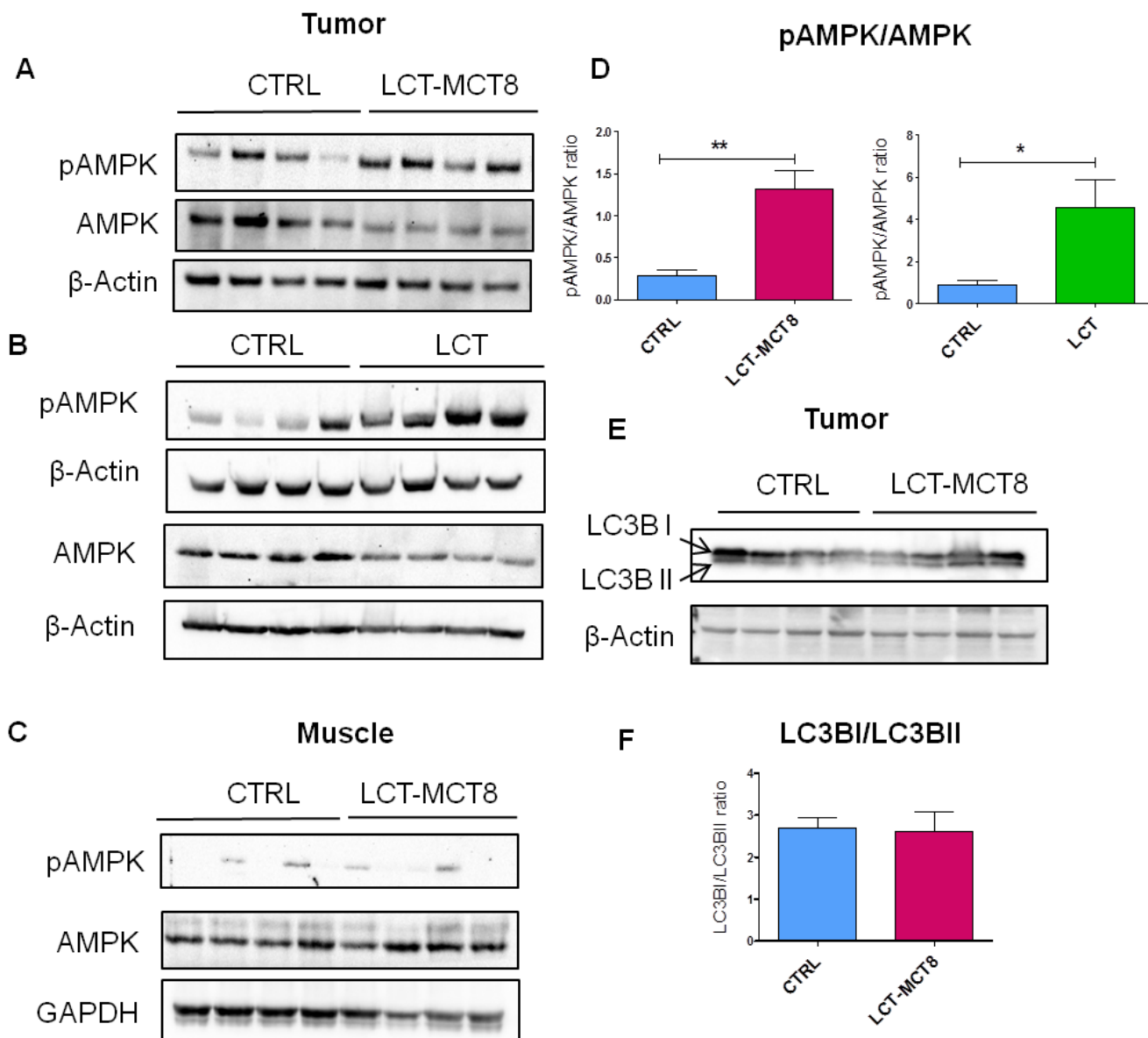


Figure 7: Western blot analysis of SK-N-BE(2) xenografts showed energy stress and lack of autophagy in LCT-MCT8 group compared to CTRL. Western blot analysis for pAMPK, AMPK and β -Actin in SK-N-BE(2) tumors in the **A**. LCT-MCT8 and **B**. LCT groups versus the CTRL group showed activation of AMPK in the KD groups. **C**. Western blot analysis for pAMPK, AMPK and GAPDH in muscle tissues of mice revealed no difference between the LCT-MCT8 and CTRL groups. **D**. The ratio of pAMPK to AMPK band intensities indicates higher levels of the activated form of AMPK in the KD groups. The pAMPK and AMPK bands were normalized to the β -Actin levels. **E**. Western blot analysis for LC3B and β -Actin in SK-N-BE(2) tumors as well as **F**. the ratio of LC3BI to LCTBII band intensities revealed no difference in autophagy levels between the LCT-MCT8 and CTRL groups. Values are given as mean \pm SEM. Unpaired *t* test; * $p \leq 0.05$; ** $p \leq 0.01$.

mice fed different diets. Western blot analysis revealed elevated levels of the activated (i.e., phosphorylated) form of AMPK in SK-N-BE(2) tumors in the LCT and LCT-MCT8 groups compared to the CTRL group (Figure 7A, 7B, 7D). In contrast, the pAMPK to AMPK ratio in mouse muscle was not influenced by the KDs (Figure 7C).

Tumor cells can trigger autophagy in response to cellular stress, including increased metabolic and energy demands [67]. Based on the observed energy stress and the significant reduction of essential AAs in the tumors of KD-group mice, we explored whether SK-N-BE(2) tumors exposed to KDs underwent autophagy, for example to maintain precursors for cellular biosynthesis. Western blot analysis of Light chain 3 (LC3B) indicated no remarkable change between the ratio of LC3B-I and LC3B-II in the xenografts of the LCT-MCT8 group versus the CTRL group (Figure 7E, 7F), suggesting there was no up-regulation of autophagy in the KD-exposed tumors.

DISCUSSION

Our previous preclinical studies on NB support the efficacy of KD as a non-toxic, complementary cancer therapy that sensitizes tumor cells to chemotherapy, particularly in combination with calorie restriction [42]. Calorie restricted KD has also been used as a complementary therapy for treatment of few brain cancer patients [16, 24], however, in clinical practice, calorie-restricted KD may not be offered to the majority of cancer patients [21, 22], especially those with cachexia [43, 44].

Only a few studies have given more than nominal attention to the triglyceride composition of KDs. In the present study, we used KDs supplemented with MCTs of different lengths to try to enhance the potency of low-dose chemotherapy in NB compared to our previous KD formulation [42]. In addition, to achieve the best possible effects of the KDs, we increased the fat content of the diets from 57% in our previous study [42] to 74.6% in the present study. Our data revealed that *ad libitum* KD supplemented with 25% MCT8 was as effective as the previously used LCT-only KD in combination with calorie restriction [42] in sensitizing NB to low-dose chemotherapy. In agreement with our new findings, KD has been shown to sensitize malignant glioma to radiation therapy and lung cancer to radio-chemo-therapy [27, 68]. Furthermore, dietary intervention with MCTs (80% of the energy) in preclinical studies on murine colon adenocarcinoma reduced both tumor proliferation and cancer cachexia [52, 56, 57, 69]. An omega-3/MCT-supplemented KD also delayed the growth of gastric cancer xenografts [54]. However, the growth of human colon xenografts was equally delayed by omega-3/MCT- and LCT-based KDs [53]. In addition, a high-fat, low-carbohydrate, moderate protein diet supplemented with MCT (60% fat (30% MCT)) was able to mimic the metabolic and anti-tumor effects of the KD and resulted in

a reduction of glioblastoma progression and an increase of survival in an orthotopic xenograft model to a similar extent as a classical KD (fat:carbohydrate plus protein ratio of 8:1) [58]. The MCT supplemented diet had a lower total fat content than the KD. In our study we used a similar ketogenic ratio in the LCT and MCT supplemented diets and therefore the MCT supplementation led to a more pronounced anti-tumor effect on the neuroblastoma xenografts compared to the LCT-only diet. The mechanism of the higher efficacy of LCT-MCT8 compared to other KDs on NB growth in the present study remains elusive and will need further exploration. A recent *in vitro* study reported that 10-carbon MCT, but not 8-carbon MCT, induced energy metabolism and mitochondrial activity in SH-SY5Y cells [61], which might provide a partial explanation for the differing anti-NB properties between LCT-MCT10 and LCT-MCT8 in our study.

The xenografts of the TP53 wild-type, non-*MYCN*-amplified SH-SY5Y cells were considerably more sensitive to KD than were the SK-N-BE(2) xenografts, which carry *MYCN* amplification, TP53 mutation (p.C135F) and chromosome 1p loss of heterozygosity [70]. A differential response of cancer cells with different genetic alterations has also recently been reported for melanoma. In contrast to the inhibition of proliferation of NB xenografts observed in the present study, BRAF V600E-mutated melanoma cells showed increased proliferation upon dietary intervention with an LCT-based KD (75% fat), whereas NRAS Q61K-mutated and wild-type melanoma cells were not affected [71]. However, in a feasibility trial with a limited number of patients with advanced malignancies, a BRAF-positive melanoma patient seemed to benefit most from consumption of ketogenic diet after BRAF-inhibitor resistance [72]. In addition, Liśkiewicz et al. also observed that long-term KD (79% fat content) increased renal tumor growth in a rat model of Tuberous Sclerosis [73]. Furthermore, we recently reported that KD is not feasible as a therapy in a CD-1 nu/nu mouse model of renal cell carcinoma with features of Stauffer's syndrome [74]. Therefore, it is of utmost importance to evaluate the effect of KDs in preclinical studies on specific types of tumors and also to take into account the different genetic alterations before considering clinical studies, as differences in the response of tumor growth to dietary intervention between mice and humans cannot be excluded.

We observed changes in the levels of specific AAs in both the plasma and the tumor in KD-fed mice but not in mice fed a control diet matching the low protein content of the KDs. These findings suggest that the high fat content, not the low protein content, of the KDs is causing specific alterations to the AA profile. The most consistent and pronounced decreases of serum AAs induced by the KDs were observed for essential AAs and urea cycle metabolites, whereas the plasma levels of serine, glycine and glutamine were elevated.

In agreement with our observation on AA profiles, Roberts et al. detected similar changes of AA plasma levels in rats given a KD (70% fat, 20% protein), as did Douris et al. in mice fed a KD (79% fat, 9% protein) [75, 76]. In contrast to our results for mice bearing NB xenografts, reduction of dietary protein (to 7%) in mice bearing prostate and breast cancer xenografts caused inhibition of tumor growth [77, 78].

The impact of the KD on down-regulation of AA catabolism [76] might contribute to its previously reported anti-cachexia effects [52, 56, 57, 69, 79]. The molecular mechanism explaining the effects of the KD on cancer growth is just beginning to be identified and the altered AA profile should be considered as a potential underlying anti-tumor mechanism of KD.

The fact that the KDs were less effective on the *MYCN*-amplified SK-N-BE-(2) xenografts compared to the non-*MYCN*-amplified SH-SY5Y tumors might inter alia be related to the fact that the MYC transcription factor enhances glutamine uptake and is a driver of glutamine-dependent tumors [80].

The higher level of AMPK activation measured in tumors of the KD groups, but not in normal tissue, provides evidence that NB cells experience metabolic stress during the dietary intervention, such that KD selectively sensitizes the NB cells to classic low-dose chemotherapy. The reduced supply of nutrients and subsequent negative energy balance resulting from the KD-induced lower blood vessel density might be another trigger for AMPK activation in NB cells.

A high level of angiogenesis and poor blood vessel formation are hallmarks of aggressive NB [81, 82]. Therefore, anti-neovascularization strategies are considered one option for combating NB [83-86]. Our previous study indicated that metronomic CP has an anti-vascularization effect on NB [42]. Interestingly, in the present study, we observed that the MCT-supplemented KDs strongly fortified the anti-angiogenic effect of cyclophosphamide. In agreement with our findings, an anti-angiogenic effect of calorie-restricted or *ad libitum* KD has been reported in brain and gastric cancer models [35, 54, 87, 88].

Anti-angiogenic therapy can lead to an imbalance between the high oxygen demands of rapidly proliferating cancer cells and the oxygen supply. Therefore, during treatment with an anti-angiogenic approach, tumors may experience hypoxia. CAIX is expressed in specific types of tumors as a mediator of the complex response to the low-oxygen environment [66]. In NB, a correlation between up-regulation of CAIX expression and poor survival, particularly in *MYCN*-amplified tumors, has been shown [89, 90]. Our study revealed that the strong inhibition of angiogenesis by the KD combined with low-dose cyclophosphamide did not stimulate a hypoxic response in NB. In accordance with this observation it has been shown that KD even reduce expression of CAIX and

hypoxia inducible factor 1-alpha which is accompanied by reduction of tumor microvasculature in a mouse glioma model [88]. In contrast, reduction of angiogenesis by anti-vascular endothelial growth factor (VEGF) treatment induced hypoxia, which in turn promoted the growth and invasiveness of glioblastoma and colon cancer [91, 92].

Based on our findings in the present study, we hypothesize that enrichment of an *ad libitum* KD with specific triglycerides can increase the efficacy of NB therapy similar to that achieved with calorie-restricted KDs. Furthermore, such lipid-modified KDs may enable to use reduced doses of chemotherapy, according to the synergy we observed here between the KDs and the metronomic CP treatment.

MATERIALS AND METHODS

Cell lines

Two NB cell lines, namely SH-SY5Y (ATCC CRL-2266) and SK-N-BE(2) (ATCC CRL-2271), were selected for the xenograft studies. SH-SY5Y is a TP53 wild type, non-*MYCN*-amplified cell line with no chromosome 1p loss of heterozygosity. The SK-N-BE(2) cell line is amplified for *MYCN*, carries a TP53 mutation (p.C135F), and is heterozygous for loss of chromosome 1p [70]. Expression of *MYCN* protein in these cell lines was reported earlier [42]. NB cells were cultured under standard conditions, as described previously [41].

Animal models and sample preparation

In vivo experiments were performed in accordance with the Salzburg Animal Care and Use Committee (Study approval no. 20901-TVG/115/6-2016). Animals were maintained under pathogen-free conditions. Xenografts were established on the right flanks of 5- to 6-week-old female CD-1 nude mice (Charles River, Wilmington, MA, USA). A 200- μ l mixture of NB cells (2×10^7 cells per mouse) in serum-free medium suspended (1:1) in matrigel (BD Bioscience, Franklin Lakes, NJ, USA) was subcutaneously injected. When the tumor size reached approximately 300 mm³, oral metronomic CP treatment was started and the mice were randomized into therapy groups (CTRL, CTRL-8%, LCT, LCT-MCT10 and LCT-MCT8; n = 10-12 per group). The animals were group-housed and had unlimited access to the food. Food intake per mouse was calculated from the average of the whole cage. Tumor volume, body weight, blood glucose and ketone body levels (beta-hydroxybutyrate) were monitored twice weekly [41]. At 36 days or when termination criteria were met (health status, tumor ulceration or volume of 2500 mm³), the mice were anesthetized with intraperitoneal injection of a solution (10 μ l per gram body

weight) composed of ketamine 20.5 mg/ml, xylazine 5.4 mg/ml and acepromazine 270 µg/ml in saline. Blood from the mice was taken by cardiac puncture and collected in BD microtainer tubes (Product Number: 365986BD Biosciences, Austria). The tubes were centrifuged at 10,000×g for 90 seconds at room temperature, and plasma was collected and snap frozen. Tissue samples were snap frozen in liquid nitrogen for further molecular analysis. For histological analysis, tumor slices were formalin-fixed and paraffin-embedded.

Food composition, energy content and metronomic cyclophosphamide (CP)

Mice were fed different diets *ad libitum* (Supplementary Table 1). All diets were fortified with the same level of vitamins and mineral supplements. Cyclophosphamide (Sigma, St Louis, MO, USA) was given orally through the drinking water according to the study of Man et al. [93]. For SH-SY5Y-bearing mice, an oral dose of 40 mg/kg/day was administered [42]. Because of the higher sensitivity of SK-N-BE(2) xenografts to CP [42], an oral dose of 13 mg/kg/day was given to SK-N-BE(2)-bearing mice.

Amino acid profiling

AA profiles were obtained from plasma and tumor tissue of mice with NB xenografts. Snap-frozen tumor tissues were homogenized in 5-fold (w/v) PBS using an Ultra-Turrax homogenizer (IKA, Staufen, Germany) and then homogenized with a motor-driven Teflon-glass homogenizer (Potter S, Braun, Melsungen, Germany). The homogenates were centrifuged at 16,000×g for 15 min at 4 °C and supernatants were collected. Then, AA levels of 100 µl plasma and tumor tissue supernatant were measured by a Biochrom 30 + Amino Acid Analyzer Physiological System (Biochrom Ltd.), as described previously [94].

Immuno-histochemical staining and analysis

Immunohistological staining was performed using 4-µm deparaffinized tumor sections of SK-N-BE(2) xenografts. Staining with anti-msCD31 (Abcam, Cambridge, UK) and anti-CAIX (BioScience Slovakia) antibodies was carried out at a dilution of 1:100, as described previously [95]. For detection, an EnVision kit (Dako, Vienna, Austria) was used according to the manufacturer's instructions. Blood-vessel densities were scored by counting the number of positively stained vessels on 5 random high-power fields (100-fold magnification) from 7-12 tumor samples of each dietary group. The level of tumor necrosis was evaluated in anti-CAIX-stained as well as hematoxylin-eosin stained

samples.

Western blot analysis

SK-N-BE(2) tumor and mouse muscle tissues (50-100 mg) were homogenized with an Ultra-Turrax homogenizer (IKA, Staufen, Germany) in 10-fold extraction buffer (20 mM Tris-HCl, pH 7.6, 250 mM sucrose, 40 mM KCl, 2 mM EGTA) and then homogenized with a motor-driven Teflon-glass homogenizer (Potter S, Braun, Melsungen, Germany). The homogenates were centrifuged at 600×g for 10 min at 4°C. A total of 20 µg protein was used for Western blot analysis, as previously described [95]. The following primary antibodies were diluted in TBS-T containing 10% western blocking reagent (Roche): 1:1000 anti-LC3 (MBL International Corporation, Vienna, Austria), 1:1000 Phospho-AMPK α (Thr172) (Cell Signaling Technologies (#2535), Frankfurt, Germany), 1:1000 anti-AMPK (Cell Signaling Technologies (#2532), Frankfurt, Germany), 1:5000 anti-beta Actin (Abcam, Cambridge, UK) and 1:5000 anti-GAPDH (Trevigen, Vienna, Austria). Horseradish peroxidase-labeled secondary antibodies were used (Dako, Vienna, Austria). Detection and quantification of band intensities was performed using Image Lab Software 5.2.1 (Bio-Rad) and normalized to the corresponding loading control.

Statistics

Statistical analysis was performed using Prism 5 (GraphPad-M3 Software, USA). Data are given as mean \pm SEM. Significance was determined by Student's t test (unpaired test) or one-way ANOVA (multiple comparisons two-tailed Dunnett's test). The statistical analysis of the survival curves was done with the Log-rank test (Mantel-Cox).

Abbreviations

AA, amino acid; AMPK, AMP-activated protein kinase; CP, cyclophosphamide; CAIX, carbonic anhydrase IX; CTRL, standard control diet; KD, ketogenic diet; LC3B, Light chain 3; LCT, long-chain triglyceride; MCT, medium-chain triglyceride; MCT8, medium-chain triglyceride with 8 carbons; MCT10, medium-chain triglyceride with 10 carbons; NB, neuroblastoma; OXPHOS, oxidative phosphorylation.

Author contributions

SAG participated in designing the study, performed, oversaw and analyzed experiments. SAG and BK wrote the manuscript. SV, FL contributed to the *in vivo* experiments.

RGF, BK designed and supervised the study and wrote the ethical proposal. TR, MOD and ASK designed the diets and provided materials. WS and JAM contributed with expertise in mitochondrial energy metabolism and critical discussion. All authors read, edited and approved the final manuscript.

ACKNOWLEDGMENTS

We would like to thank Dr. Raphael J. Morscher and Susanne Brunner for comments and suggestions, and Barbara Danner, Julia Stockinger and David Schwarzenbacher for excellent technical support.

CONFLICTS OF INTEREST

Tricia Rutherford, Maura O'Donnel, Andrea Stöger-Kleiber are employees of Vitaflo International and therefore have a potential financial conflict of interest. The other authors declare they have no conflicts of interest.

FUNDING

This work was supported by Austrian Research Promotion Agency (822782/THERAPEP), Research Fund of the Paracelsus Medical University (E10/12/061-KOF), Children's Cancer Foundation Salzburg and the Marie Curie International Training Network MEET (317433) of the European Union.

REFERENCES

1. Park JR, Eggert A, Caron H. Neuroblastoma: biology, prognosis, and treatment. *Hematol Oncol Clin North Am.* 2010; 24:65–86. <https://doi.org/10.1016/j.hoc.2009.11.011>
2. Shimada H, Ambros IM, Dehner LP, Hata J, Joshi VV, Roald B, Stram DO, Gerbing RB, Lukens JN, Matthay KK, Castleberry RP. The International Neuroblastoma Pathology Classification (the Shimada system). *Cancer.* 1999; 86:364–72. [https://doi.org/10.1002/\(SICI\)1097-0142\(19990715\)86:2<364::AID-CNCR21>3.0.CO;2-7](https://doi.org/10.1002/(SICI)1097-0142(19990715)86:2<364::AID-CNCR21>3.0.CO;2-7)
3. Smith MA, Altekruse SF, Adamson PC, Reaman GH, Seibel NL. Declining childhood and adolescent cancer mortality. *Cancer.* 2014; 120:2497–506. <https://doi.org/10.1002/ncr.28748>
4. Pinto NR, Applebaum MA, Volchenboum SL, Matthay KK, London WB, Ambros PF, Nakagawara A, Berthold F, Schleiermacher G, Park JR, Valteau-Couanet D, Pearson AD, Cohn SL. Advances in Risk Classification and Treatment Strategies for Neuroblastoma. *J Clin Oncol.* 2015; 33:3008–17. <https://doi.org/10.1200/JCO.2014.59.4648>
5. Geenen MM, Cardous-Ubbink MC, Kremer LC, van den Bos C, van der Pal HJ, Heinen RC, Jaspers MW, Koning CC, Oldenburger F, Langeveld NE, Hart AA, Bakker

- PJ, Caron HN, van Leeuwen FE. Medical assessment of adverse health outcomes in long-term survivors of childhood cancer. *JAMA.* 2007; 297:2705–15. <https://doi.org/10.1001/jama.297.24.2705>
6. Armstrong GT, Kawashima T, Leisenring W, Stratton K, Stovall M, Hudson MM, Sklar CA, Robison LL, Oeffinger KC. Aging and risk of severe, disabling, life-threatening, and fatal events in the childhood cancer survivor study. *J Clin Oncol.* 2014; 32:1218–27. <https://doi.org/10.1200/JCO.2013.51.1055>
7. Hudson MM, Ness KK, Gurney JG, Mulrooney DA, Chemaitilly W, Krull KR, Green DM, Armstrong GT, Nottage KA, Jones KE, Sklar CA, Srivastava DK, Robison LL. Clinical ascertainment of health outcomes among adults treated for childhood cancer. *JAMA.* 2013; 309:2371–81. <https://doi.org/10.1001/jama.2013.6296>
8. Bhatia S, Armenian SH, Armstrong GT, van Dulmen-den Broeder E, Hawkins MM, Kremer LC, Kuehni CE, Olsen JH, Robison LL, Hudson MM. Collaborative Research in Childhood Cancer Survivorship: The Current Landscape. *J Clin Oncol.* 2015; 33:3055–64. <https://doi.org/10.1200/JCO.2014.59.8052>
9. Aminzadeh S, Vidali S, Sperl W, Kofler B, Feichtinger RG. Energy metabolism in neuroblastoma and Wilms tumor. *Transl Pediatr.* 2015; 4:20–32.
10. Shulkin BL, Mitchell DS, Ungar DR, Prakash D, Dole MG, Castle VP, Hernandez RJ, Koeppel RA, Hutchinson RJ. Neoplasms in a pediatric population: 2-[F-18]-fluoro-2-deoxy-D-glucose PET studies. *Radiology.* 1995; 194:495–500. <https://doi.org/10.1148/radiology.194.2.7824731>
11. Freebody J, Wegner EA, Rossleigh MA. 2-deoxy-2-((18)F) fluoro-D-glucose positron emission tomography/computed tomography imaging in paediatric oncology. *World J Radiol.* 2014; 6:741–55. <https://doi.org/10.4329/wjr.v6.i10.741>
12. Levy AG, Zage PE, Akers LJ, Ghisoli ML, Chen Z, Fang W, Kannan S, Graham T, Zeng L, Franklin AR, Huang P, Zweidler-McKay PA. The combination of the novel glycolysis inhibitor 3-BrOP and rapamycin is effective against neuroblastoma. *Invest New Drugs.* 2012; 30:191–99. <https://doi.org/10.1007/s10637-010-9551-y>
13. Feichtinger RG, Zimmermann F, Mayr JA, Neureiter D, Hauser-Kronberger C, Schilling FH, Jones N, Sperl W, Kofler B. Low aerobic mitochondrial energy metabolism in poorly- or undifferentiated neuroblastoma. *BMC Cancer.* 2010; 10:149. <https://doi.org/10.1186/1471-2407-10-149>
14. Schmidt M, Pfetzer N, Schwab M, Strauss I, Kämmerer U. Effects of a ketogenic diet on the quality of life in 16 patients with advanced cancer: A pilot trial. *Nutr Metab (Lond).* 2011; 8:54. <https://doi.org/10.1186/1743-7075-8-54>
15. Artzi M, Liberman G, Vaisman N, Bokstein F, Vitinshtein F, Aizenstein O, Ben Bashat D. Changes in cerebral metabolism during ketogenic diet in patients with primary brain tumors: (1)H-MRS study. *J Neurooncol.* 2017; 132:267–75. <https://doi.org/10.1007/s11060-016-2364-x>

16. Schwartz K, Chang HT, Nikolai M, Pernicone J, Rhee S, Olson K, Kurniali PC, Hord NG, Noel M. Treatment of glioma patients with ketogenic diets: report of two cases treated with an IRB-approved energy-restricted ketogenic diet protocol and review of the literature. *Cancer Metab.* 2015; 3:3. <https://doi.org/10.1186/s40170-015-0129-1>
17. Champ CE, Palmer JD, Volek JS, Werner-Wasik M, Andrews DW, Evans JJ, Glass J, Kim L, Shi W. Targeting metabolism with a ketogenic diet during the treatment of glioblastoma multiforme. *J Neurooncol.* 2014; 117:125–31. <https://doi.org/10.1007/s11060-014-1362-0>
18. Rieger J, Bähr O, Maurer GD, Hattingen E, Franz K, Brucker D, Walenta S, Kämmerer U, Coy JF, Weller M, Steinbach JP. ERGO: a pilot study of ketogenic diet in recurrent glioblastoma. *Int J Oncol.* 2014; 44:1843–52.
19. Vidali S, Aminzadeh S, Lambert B, Rutherford T, Sperl W, Kofler B, Feichtinger RG. Mitochondria: the ketogenic diet—A metabolism-based therapy. *Int J Biochem Cell Biol.* 2015; 63:55–59. <https://doi.org/10.1016/j.biocel.2015.01.022>
20. Klement RJ, Sweeney RA. Impact of a ketogenic diet intervention during radiotherapy on body composition: I. Initial clinical experience with six prospectively studied patients. *BMC Res Notes.* 2016; 9:143. <https://doi.org/10.1186/s13104-016-1959-9>
21. Klement RJ. Beneficial effects of ketogenic diets for cancer patients: a realist review with focus on evidence and confirmation. *Med Oncol.* 2017; 34:132. <https://doi.org/10.1007/s12032-017-0991-5>
22. Winter SF, Loebel F, Dietrich J. Role of ketogenic metabolic therapy in malignant glioma: A systematic review. *Crit Rev Oncol Hematol.* 2017; 112:41–58. <https://doi.org/10.1016/j.critrevonc.2017.02.016>
23. Oliveira CL, Mattingly S, Schirmmacher R, Sawyer MB, Fine EJ, Prado CM. A Nutritional Perspective of Ketogenic Diet in Cancer: A Narrative Review. *J Acad Nutr Diet.* 2017 Mar 30. <https://doi.org/10.1016/j.jand.2017.02.003>. [Epub ahead of print]
24. Zuccoli G, Marcello N, Pisanello A, Servadei F, Vaccaro S, Mukherjee P, Seyfried TN. Metabolic management of glioblastoma multiforme using standard therapy together with a restricted ketogenic diet: case Report. *Nutr Metab (Lond).* 2010; 7:33. <https://doi.org/10.1186/1743-7075-7-33>
25. Seyfried TN, Flores R, Poff AM, D'Agostino DP, Mukherjee P. Metabolic therapy: a new paradigm for managing malignant brain cancer. *Cancer Lett.* 2015; 356:289–300. <https://doi.org/10.1016/j.canlet.2014.07.015>
26. Klement RJ, Champ CE, Otto C, Kämmerer U. Anti-Tumor Effects of Ketogenic Diets in Mice: A Meta-Analysis. *PLoS One.* 2016; 11:e0155050. <https://doi.org/10.1371/journal.pone.0155050>
27. Abdelwahab MG, Fenton KE, Preul MC, Rho JM, Lynch A, Stafford P, Scheck AC. The ketogenic diet is an effective adjuvant to radiation therapy for the treatment of malignant glioma. *PLoS One.* 2012; 7:e36197. <https://doi.org/10.1371/journal.pone.0036197>
28. Maurer GD, Brucker DP, Bähr O, Harter PN, Hattingen E, Walenta S, Mueller-Klieser W, Steinbach JP, Rieger J. Differential utilization of ketone bodies by neurons and glioma cell lines: a rationale for ketogenic diet as experimental glioma therapy. *BMC Cancer.* 2011; 11:315. <https://doi.org/10.1186/1471-2407-11-315>
29. Lussier DM, Woolf EC, Johnson JL, Brooks KS, Blattman JN, Scheck AC. Enhanced immunity in a mouse model of malignant glioma is mediated by a therapeutic ketogenic diet. *BMC Cancer.* 2016; 16:310. <https://doi.org/10.1186/s12885-016-2337-7>
30. Poff AM, Ward N, Seyfried TN, Arnold P, D'Agostino DP. Non-Toxic Metabolic Management of Metastatic Cancer in VM Mice: Novel Combination of Ketogenic Diet, Ketone Supplementation, and Hyperbaric Oxygen Therapy. *PLoS One.* 2015; 10:e0127407. <https://doi.org/10.1371/journal.pone.0127407>
31. Khodadadi S, Sobhani N, Mirshekar S, Ghiasvand R, Pourmasoumi M, Miraghajani M, Dehsoukhteh SS. Tumor Cells Growth and Survival Time with the Ketogenic Diet in Animal Models: A Systematic Review. *Int J Prev Med.* 2017; 8:35. <https://doi.org/10.4103/2008-7802.207035>
32. Zahra A, Fath MA, Opat E, Mapuskar KA, Bhatia SK, Ma DC, Iii SN, Snyders TP, Chenard CA, Eichenberger-Gilmore JM, Bodeker KL, Ahmann L, Smith BJ, et al. Consuming a Ketogenic Diet while Receiving Radiation and Chemotherapy for Locally Advanced Lung Cancer and Pancreatic Cancer: The University of Iowa Experience of Two Phase 1 Clinical Trials. *Radiat Res.* 2017; 187:743–54. <https://doi.org/10.1667/RR14668.1>
33. Allott EH, Macias E, Sanders S, Knudsen BS, Thomas GV, Hursting SD, Freedland SJ. Impact of carbohydrate restriction in the context of obesity on prostate tumor growth in the Hi-Myc transgenic mouse model. *Prostate Cancer Prostatic Dis.* 2017; 20:165–71. <https://doi.org/10.1038/pcan.2016.73>
34. Seyfried TN, Sanderson TM, El-Abbadi MM, McGowan R, Mukherjee P. Role of glucose and ketone bodies in the metabolic control of experimental brain cancer. *Br J Cancer.* 2003; 89:1375–82. <https://doi.org/10.1038/sj.bjc.6601269>
35. Zhou W, Mukherjee P, Kiebish MA, Markis WT, Mantis JG, Seyfried TN. The calorically restricted ketogenic diet, an effective alternative therapy for malignant brain cancer. *Nutr Metab (Lond).* 2007; 4:5. <https://doi.org/10.1186/1743-7075-4-5>
36. Seyfried TN, Kiebish MA, Marsh J, Shelton LM, Huysentruyt LC, Mukherjee P. Metabolic management of brain cancer. *Biochim Biophys Acta.* 2011; 1807:577–94. <https://doi.org/10.1016/j.bbabi.2010.08.009>
37. Lee C, Raffaghello L, Brandhorst S, Safdie FM, Bianchi G, Martin-Montalvo A, Pistoia V, Wei M, Hwang S, Merlino A, Emionite L, de Cabo R, Longo VD. Fasting cycles retard growth of tumors and sensitize a range of cancer cell types

- to chemotherapy. *Sci Transl Med.* 2012; 4:124ra27. <https://doi.org/10.1126/scitranslmed.3003293>
38. Raffaghello L, Lee C, Safdie FM, Wei M, Madia F, Bianchi G, Longo VD. Starvation-dependent differential stress resistance protects normal but not cancer cells against high-dose chemotherapy. *Proc Natl Acad Sci USA.* 2008; 105:8215–20. <https://doi.org/10.1073/pnas.0708100105>
 39. Safdie FM, Dorff T, Quinn D, Fontana L, Wei M, Lee C, Cohen P, Longo VD. Fasting and cancer treatment in humans: A case series report. *Aging (Albany NY).* 2009; 1:988–1007. <https://doi.org/10.18632/aging.100114>
 40. de Groot S, Vreeswijk MP, Welters MJ, Gravesteijn G, Boei JJ, Jochems A, Houtsma D, Putter H, van der Hoeven JJ, Nortier JW, Pijl H, Kroep JR. The effects of short-term fasting on tolerance to (neo) adjuvant chemotherapy in HER2-negative breast cancer patients: a randomized pilot study. *BMC Cancer.* 2015; 15:652. <https://doi.org/10.1186/s12885-015-1663-5>
 41. Morscher RJ, Aminzadeh-Gohari S, Feichtinger RG, Mayr JA, Lang R, Neureiter D, Sperl W, Kofler B. Inhibition of Neuroblastoma Tumor Growth by Ketogenic Diet and/or Calorie Restriction in a CD1-Nu Mouse Model. *PLoS One.* 2015; 10:e0129802. <https://doi.org/10.1371/journal.pone.0129802>
 42. Morscher RJ, Aminzadeh-Gohari S, Hauser-Kronberger C, Feichtinger RG, Sperl W, Kofler B. Combination of metronomic cyclophosphamide and dietary intervention inhibits neuroblastoma growth in a CD1-nu mouse model. *Oncotarget.* 2016; 7:17060–73. <https://doi.org/10.18632/oncotarget.7929>
 43. Gullett NP, Mazurak VC, Hebbar G, Ziegler TR. Nutritional interventions for cancer-induced cachexia. *Curr Probl Cancer.* 2011; 35:58–90. <https://doi.org/10.1016/j.crrprobcancer.2011.01.001>
 44. Aoyagi T, Terracina KP, Raza A, Matsubara H, Takabe K. Cancer cachexia, mechanism and treatment. *World J Gastrointest Oncol.* 2015; 7:17–29.
 45. Green GJ, Weitzman SS, Pencharz PB. Resting energy expenditure in children newly diagnosed with stage IV neuroblastoma. *Pediatr Res.* 2008; 63:332–36. <https://doi.org/10.1203/PDR.0b013e318163a2d4>
 46. Sills MA, Forsythe WI, Haidukewych D. Role of octanoic and decanoic acids in the control of seizures. *Arch Dis Child.* 1986; 61:1173–77. <https://doi.org/10.1136/adc.61.12.1173>
 47. Schönfeld P, Wojtczak L. Short- and medium-chain fatty acids in energy metabolism: the cellular perspective. *J Lipid Res.* 2016; 57:943–54. <https://doi.org/10.1194/jlr.R067629>
 48. Hamilton JA. Medium-chain fatty acid binding to albumin and transfer to phospholipid bilayers. *Proc Natl Acad Sci USA.* 1989; 86:2663–67. <https://doi.org/10.1073/pnas.86.8.2663>
 49. Papamandjaris AA, MacDougall DE, Jones PJ. Medium chain fatty acid metabolism and energy expenditure: obesity treatment implications. *Life Sci.* 1998; 62:1203–15. [https://doi.org/10.1016/S0024-3205\(97\)01143-0](https://doi.org/10.1016/S0024-3205(97)01143-0)
 50. Geng S, Zhu W, Xie C, Li X, Wu J, Liang Z, Xie W, Zhu J, Huang C, Zhu M, Wu R, Zhong C. Medium-chain triglyceride ameliorates insulin resistance and inflammation in high fat diet-induced obese mice. *Eur J Nutr.* 2016; 55:931–40. <https://doi.org/10.1007/s00394-015-0907-0>
 51. Huttenlocher PR, Wilbourn AJ, Signore JM. Medium-chain triglycerides as a therapy for intractable childhood epilepsy. *Neurology.* 1971; 21:1097–103. <https://doi.org/10.1212/WNL.21.11.1097>
 52. Tisdale MJ, Brennan RA, Fearon KC. Reduction of weight loss and tumour size in a cachexia model by a high fat diet. *Br J Cancer.* 1987; 56:39–43. <https://doi.org/10.1038/bjc.1987.149>
 53. Hao GW, Chen YS, He DM, Wang HY, Wu GH, Zhang B. Growth of human colon cancer cells in nude mice is delayed by ketogenic diet with or without omega-3 fatty acids and medium-chain triglycerides. *Asian Pac J Cancer Prev.* 2015; 16:2061–68. <https://doi.org/10.7314/APJCP.2015.16.5.2061>
 54. Otto C, Kaemmerer U, Illert B, Muehling B, Pfetzer N, Wittig R, Voelker HU, Thiede A, Coy JF. Growth of human gastric cancer cells in nude mice is delayed by a ketogenic diet supplemented with omega-3 fatty acids and medium-chain triglycerides. *BMC Cancer.* 2008; 8:122. <https://doi.org/10.1186/1471-2407-8-122>
 55. Nebeling LC, Lerner E. Implementing a ketogenic diet based on medium-chain triglyceride oil in pediatric patients with cancer. *J Am Diet Assoc.* 1995; 95:693–97. [https://doi.org/10.1016/S0002-8223\(95\)00189-1](https://doi.org/10.1016/S0002-8223(95)00189-1)
 56. Beck SA, Tisdale MJ. Effect of insulin on weight loss and tumour growth in a cachexia model. *Br J Cancer.* 1989; 59:677–81. <https://doi.org/10.1038/bjc.1989.140>
 57. Beck SA, Tisdale MJ. Nitrogen excretion in cancer cachexia and its modification by a high fat diet in mice. *Cancer Res.* 1989; 49:3800–04.
 58. Martuscello RT, Vedam-Mai V, McCarthy DJ, Schmoll ME, Jundi MA, Louviere CD, Griffith BG, Skinner CL, Suslov O, Deleyrolle LP, Reynolds BA. A Supplemented High-Fat Low-Carbohydrate Diet for the Treatment of Glioblastoma. *Clin Cancer Res.* 2016; 22:2482–95. <https://doi.org/10.1158/1078-0432.CCR-15-0916>
 59. Papada E, Kaliora AC, GiOXari A, Papalois A, Forbes A. Anti-inflammatory effect of elemental diets with different fat composition in experimental colitis. *Br J Nutr.* 2014; 111:1213–20. <https://doi.org/10.1017/S0007114513003632>
 60. Kono H, Fujii H, Asakawa M, Maki A, Amemiya H, Hirai Y, Matsuda M, Yamamoto M. Medium-chain triglycerides enhance secretory IgA expression in rat intestine after administration of endotoxin. *Am J Physiol Gastrointest Liver Physiol.* 2004; 286:G1081–89. <https://doi.org/10.1152/ajpgi.00457.2003>
 61. Hughes SD, Kanabus M, Anderson G, Hargreaves IP, Rutherford T, O'Donnell M, Cross JH, Rahman S, Eaton

- S, Heales SJ. The ketogenic diet component decanoic acid increases mitochondrial citrate synthase and complex I activity in neuronal cells. *J Neurochem*. 2014; 129:426–33. <https://doi.org/10.1111/jnc.12646>
62. Meidenbauer JJ, Mukherjee P, Seyfried TN. The glucose ketone index calculator: a simple tool to monitor therapeutic efficacy for metabolic management of brain cancer. *Nutr Metab (Lond)*. 2015; 12:12. <https://doi.org/10.1186/s12986-015-0009-2>
 63. McIntyre A, Harris AL. Metabolic and hypoxic adaptation to anti-angiogenic therapy: a target for induced essentiality. *EMBO Mol Med*. 2015; 7:368–79. <https://doi.org/10.15252/emmm.201404271>
 64. Ulivi P, Marisi G, Passardi A. Relationship between hypoxia and response to antiangiogenic therapy in metastatic colorectal cancer. *Oncotarget*. 2016; 7:46678–91. <https://doi.org/10.18632/oncotarget.8712>
 65. Li J, Zhang G, Wang X, Li XF. Is carbonic anhydrase IX a validated target for molecular imaging of cancer and hypoxia? *Future Oncol*. 2015; 11:1531–41. <https://doi.org/10.2217/fo.15.11>
 66. McDonald PC, Dedhar S. Carbonic anhydrase IX (CAIX) as a mediator of hypoxia-induced stress response in cancer cells. *Subcell Biochem*. 2014; 75:255–69. https://doi.org/10.1007/978-94-007-7359-2_13
 67. Murrow L, Debnath J. Autophagy as a stress-response and quality-control mechanism: implications for cell injury and human disease. *Annu Rev Pathol*. 2013; 8:105–37. <https://doi.org/10.1146/annurev-pathol-020712-163918>
 68. Allen BG, Bhatia SK, Buatti JM, Brandt KE, Lindholm KE, Button AM, Szweda LI, Smith BJ, Spitz DR, Fath MA. Ketogenic diets enhance oxidative stress and radio-chemotherapy responses in lung cancer xenografts. *Clin Cancer Res*. 2013; 19:3905–13. <https://doi.org/10.1158/1078-0432.CCR-12-0287>
 69. Tisdale MJ, Brennan RA. A comparison of long-chain triglycerides and medium-chain triglycerides on weight loss and tumour size in a cachexia model. *Br J Cancer*. 1988; 58:580–83. <https://doi.org/10.1038/bjc.1988.263>
 70. Li Z, Yan S, Attayan N, Ramalingam S, Thiele CJ. Combination of an allosteric Akt Inhibitor MK-2206 with etoposide or rapamycin enhances the antitumor growth effect in neuroblastoma. *Clin Cancer Res*. 2012; 18:3603–15. <https://doi.org/10.1158/1078-0432.CCR-11-3321>
 71. Xia S, Lin R, Jin L, Zhao L, Kang HB, Pan Y, Liu S, Qian G, Qian Z, Konstantakou E, Zhang B, Dong JT, Chung YR, et al. Prevention of Dietary-Fat-Fueled Ketogenesis Attenuates BRAF V600E Tumor Growth. *Cell Metab*. 2017; 25:358–73. <https://doi.org/10.1016/j.cmet.2016.12.010>
 72. Tan-Shalaby JL, Carrick J, Edinger K, Genovese D, Liman AD, Passero VA, Shah RB. Modified Atkins diet in advanced malignancies - final results of a safety and feasibility trial within the Veterans Affairs Pittsburgh Healthcare System. *Nutr Metab (Lond)*. 2016; 13:52. <https://doi.org/10.1186/s12986-016-0113-y>. Erratum in: Erratum to: Modified Atkins diet in advanced malignancies-final results of a safety and feasibility trial within the Veterans Affairs Pittsburgh Healthcare System. [*Nutr Metab (Lond)*. 2016].
 73. Liśkiewicz AD, Kasprowska D, Wojakowska A, Polański K, Lewin-Kowalik J, Kotulska K, Jędrzejowska-Szypułka H. Long-term High Fat Ketogenic Diet Promotes Renal Tumor Growth in a Rat Model of Tuberous Sclerosis. *Sci Rep*. 2016; 6:21807. <https://doi.org/10.1038/srep21807>
 74. Vidali S, Aminzadeh-Gohari S, Feichtinger RG, Vatrinet R, Koller A, Locker F, Rutherford T, O'Donnell M, Stoger-Kleiber A, Lambert B, Felder TK, Sperl W, Kofler B. The ketogenic diet is not feasible as a therapy in a CD-1 nu/nu mouse model of renal cell carcinoma with features of Stauffer's syndrome. *Oncotarget*. Forthcoming 2017. <https://doi.org/10.18632/oncotarget.19306>.
 75. Roberts MD, Holland AM, Kephart WC, Mobley CB, Mumford PW, Lowery RP, Fox CD, McCloskey AE, Shake JJ, Mesquita P, Patel RK, Martin JS, Young KC, et al. A putative low-carbohydrate ketogenic diet elicits mild nutritional ketosis but does not impair the acute or chronic hypertrophic responses to resistance exercise in rodents. *J Appl Physiol (1985)*. 2016; 120:1173–85. <https://doi.org/10.1152/jappphysiol.00837.2015>
 76. Douris N, Melman T, Pecherer JM, Pissios P, Flier JS, Cantley LC, Locasale JW, Maratos-Flier E. Adaptive changes in amino acid metabolism permit normal longevity in mice consuming a low-carbohydrate ketogenic diet. *Biochim Biophys Acta*. 2015; 1852:2056–65. <https://doi.org/10.1016/j.bbadis.2015.07.009>.
 77. Fontana L, Adelaiye RM, Rastelli AL, Miles KM, Ciamporcero E, Longo VD, Nguyen H, Vessella R, Pili R. Dietary protein restriction inhibits tumor growth in human xenograft models. *Oncotarget*. 2013; 4:2451–61. <https://doi.org/10.18632/oncotarget.1586>
 78. Lamming DW, Cummings NE, Rastelli AL, Gao F, Cava E, Bertozzi B, Spelta F, Pili R, Fontana L. Restriction of dietary protein decreases mTORC1 in tumors and somatic tissues of a tumor-bearing mouse xenograft model. *Oncotarget*. 2015; 6:31233–40. <https://doi.org/10.18632/oncotarget.5180>
 79. Shukla SK, Gebregiworgis T, Purohit V, Chaika NV, Gunda V, Radhakrishnan P, Mehla K, Pipinos II, Powers R, Yu F, Singh PK. Metabolic reprogramming induced by ketone bodies diminishes pancreatic cancer cachexia. *Cancer Metab*. 2014; 2:18. <https://doi.org/10.1186/2049-3002-2-18>. Erratum in: *Cancer Metab*. 2014; 2:22.
 80. Xiao D, Ren P, Su H, Yue M, Xiu R, Hu Y, Liu H, Qing G. Myc promotes glutaminolysis in human neuroblastoma through direct activation of glutaminase 2. *Oncotarget*. 2015; 6:40655–66. <https://doi.org/10.18632/oncotarget.5821>
 81. Jakovljević G, Culić S, Stepan J, Kosuta I, Seiwerth S. Relationship between tumor vascularity and vascular

- endothelial growth factor as prognostic factors for patients with neuroblastoma. *Coll Antropol.* 2011; 35:1071–79.
82. Jakovljević G, Culić S, Stepan J, Bonevski A, Seiwerth S. Vascular endothelial growth factor in children with neuroblastoma: a retrospective analysis. *J Exp Clin Cancer Res.* 2009; 28:143. <https://doi.org/10.1186/1756-9966-28-143>
83. Ribatti D. Anti-angiogenesis in neuroblastoma. *Crit Rev Oncol Hematol.* 2013; 86:212–21. <https://doi.org/10.1016/j.critrevonc.2012.11.004>
84. Rössler J, Taylor M, Georger B, Farace F, Lagodny J, Peschka-Süss R, Niemeyer CM, Vassal G. Angiogenesis as a target in neuroblastoma. *Eur J Cancer.* 2008; 44:1645–56. <https://doi.org/10.1016/j.ejca.2008.05.015>
85. Williams RF, Myers AL, Sims TL, Ng CY, Nathwani AC, Davidoff AM. Targeting multiple angiogenic pathways for the treatment of neuroblastoma. *J Pediatr Surg.* 2010; 45:1103–09. <https://doi.org/10.1016/j.jpedsurg.2010.02.073>
86. Pastorino F, Di Paolo D, Loi M, Becherini P, Caffà I, Zorzoli A, Marimpietri D, Carosio R, Perri P, Montaldo PG, Brignole C, Pagnan G, Ribatti D, et al. Recent advances in targeted anti-vasculature therapy: the neuroblastoma model. *Curr Drug Targets.* 2009; 10:1021–27. <https://doi.org/10.2174/138945009789577954>
87. Mukherjee P, El-Abbadi MM, Kasperzyk JL, Raney MK, Seyfried TN. Dietary restriction reduces angiogenesis and growth in an orthotopic mouse brain tumour model. *Br J Cancer.* 2002; 86:1615–21. <https://doi.org/10.1038/sj.bjc.6600298>
88. Woolf EC, Curley KL, Liu Q, Turner GH, Charlton JA, Preul MC, Scheck AC. The Ketogenic Diet Alters the Hypoxic Response and Affects Expression of Proteins Associated with Angiogenesis, Invasive Potential and Vascular Permeability in a Mouse Glioma Model. *PLoS One.* 2015; 10:e0130357. <https://doi.org/10.1371/journal.pone.0130357>
89. Ameis HM, Drenckhan A, Freytag M, Izbicki JR, Supuran CT, Reinshagen K, Holland-Cunz S, Gros SJ. Carbonic anhydrase IX correlates with survival and is a potential therapeutic target for neuroblastoma. *J Enzyme Inhib Med Chem.* 2016; 31:404–09.
90. Dungwa JV, Hunt LP, Ramani P. Carbonic anhydrase IX up-regulation is associated with adverse clinicopathologic and biologic factors in neuroblastomas. *Hum Pathol.* 2012; 43:1651–60. <https://doi.org/10.1016/j.humpath.2011.12.006>
91. Keunen O, Johansson M, Oudin A, Sanzey M, Rahim SA, Fack F, Thorsen F, Taxt T, Bartos M, Jirik R, Miletic H, Wang J, Stieber D, et al. Anti-VEGF treatment reduces blood supply and increases tumor cell invasion in glioblastoma. *Proc Natl Acad Sci USA.* 2011; 108:3749–54. <https://doi.org/10.1073/pnas.1014480108>
92. Miyazaki S, Kikuchi H, Iino I, Uehara T, Setoguchi T, Fujita T, Hiramatsu Y, Ohta M, Kamiya K, Kitagawa K, Kitagawa M, Baba S, Konno H. Anti-VEGF antibody therapy induces tumor hypoxia and stanniocalcin 2 expression and potentiates growth of human colon cancer xenografts. *Int J Cancer.* 2014; 135:295–307. <https://doi.org/10.1002/ijc.28686>
93. Man S, Bocci G, Francia G, Green SK, Jothy S, Hanahan D, Bohlen P, Hicklin DJ, Bergers G, Kerbel RS. Antitumor effects in mice of low-dose (metronomic) cyclophosphamide administered continuously through the drinking water. *Cancer Res.* 2002; 62:2731–35.
94. Brunner SM, Farzi A, Locker F, Holub BS, Drexel M, Reichmann F, Lang AA, Mayr JA, Vilches JJ, Navarro X, Lang R, Sperk G, Holzer P, Kofler B. GAL3 receptor KO mice exhibit an anxiety-like phenotype. *Proc Natl Acad Sci USA.* 2014; 111:7138–43. <https://doi.org/10.1073/pnas.1318066111>
95. Feichtinger RG, Weis S, Mayr JA, Zimmermann F, Geilberger R, Sperl W, Kofler B. Alterations of oxidative phosphorylation complexes in astrocytomas. *Glia.* 2014; 62:514–25. <https://doi.org/10.1002/glia.22621>