

Abnormal amplitude of low-frequency fluctuations associated with rapid-eye movement in chronic primary insomnia patients

Qian Ran^{1,*}, Jia Chen^{1,*}, Chuan Li¹, Li Wen¹, Faguo Yue², Tongsheng Shu¹, Jianxun Mi³, Guangxian Wang¹, Lei Zhang¹, Dong Gao² and Dong Zhang¹

¹Department of Radiology, The Second Affiliated Hospital of The Third Military Medical University, Sha Pingba, Chongqing 400037, China

²Department of Sleep and Psychology, Institute of Surgery Research, The Third Affiliated Hospital of The Third Military Medical University, Da Ping, Chongqing 400042, China

³College of Computer Science and Technology, Chongqing University of Posts and Telecommunications, Chongqing 400065, China

* First authors

Correspondence to: Dong Zhang, **email:** xqfskzd007@163.com
Dong Gao, **email:** gaodong1973@163.com

Keywords: *insomnia, REM, ALFF, resting-state fMRI, PSG*

Received: March 24, 2017

Accepted: May 03, 2017

Published: May 17, 2017

Copyright: Ran et al. This is an open-access article distributed under the terms of the Creative Commons Attribution License 3.0 (CC BY 3.0), which permits unrestricted use, distribution, and reproduction in any medium, provided the original author and source are credited.

ABSTRACT

Purpose: Chronic primary insomnia (CPI) is the most prevalent sleep disorder worldwide. CPI manifests as difficulties in sleep onset, maintaining sleep, prolonged sleep latency, and daytime impairment and is often accompanied by cognitive problems such as poor academic performance, poor attention, and decreased memory. The most popular explanation of insomnia is hyperarousal or increased activities of neurons. Rapid eye movement (REM) sleep detected by polysomnography (PSG) exhibits a positive relationship with brain homeostasis and can be helpful for optimally preparing an organism for emotional and social function. Limited work has been performed to explore brain function of insomnia patients in combination with PSG analysis.

Results: We observed increased ALFF within areas related to hyperarousal such as the midbrain and bilateral extra-nucleus, whereas decreased ALFF was observed within areas associated with memory and attention involving the parietal and occipital lobule and others. Furthermore, the altered ALFF was associated with the duration of insomnia, sleep efficiency, duration of REM, latency of RME and ratio of REM.

Materials and Methods: In this study, we recruited twenty-five CPI patients and twenty-five normal sleep (NS) volunteers as a control group to investigate the amplitude of low-frequency fluctuations (ALFF) and the correlation between those altered ALFF regions through resting-state fMRI and PSG data.

Conclusions: These findings suggest that hyperarousal reflected by ALFF abnormality within brain areas related to cognition and emotion in insomnia associated with REM sleep.

INTRODUCTION

Chronic primary insomnia (CPI) is the most prevalent sleep disorder. CPI manifests as difficulties in sleep onset, falling asleep, maintaining sleep, prolonged sleep latency and daytime impairment [1]. Approximately 10–15% of the population worldwide suffers from

CPI [2, 3]. In China, 45% of the population suffers from occasional insomnia because of work pressures, urbanization and industrialization, as surveyed by the Chinese Medical Association (CMA) [4]. Abundant sleep can facilitate the removal of free radicals from the brain produced during wakefulness [5]. However, when sleep loss, interruption or disturbance occurs, the accumulated

free radicals cannot be removed, and the biological characteristics of long-distance signal transmission and nerve cell function cannot be recovered in a timely manner [6, 7]. Chronic insomnia is accompanied by cognitive and conduct problems, such as poor academic performance, poor attention, and decreased memory [8–11]. Moreover, CPI patients usually also accompanied with emotional related problems, such as depression, anxiety, hysteria and so on [12–15]. Most depression patients were accompanied with insomnia, and patients with depression or anxiety frequently visit outpatient departments solely due to insomnia [16]. Hence, CPI patients may appear emotional related problems such as depression in later stages in the absence of early-stage diagnosis and efficient treatment.

Polysomnography (PSG) is an objective method that is normally used to monitor sleep non-rapid eye movement (NREM) and rapid eye movement (REM) in the clinic. REM sleep homeostasis has been reported to have a positive relationship with brain homeostasis and can be helpful for optimally preparing an organism for emotional and social function [17]. Some studies reported insomnia patients REM stage sleep are abnormal [18]. Therefore, we assumed abnormal REM sleep may be correlated with insomnia. Previous neuroimaging studies have mainly focused on regional brain metabolism or brain activity using single-photon emission computed tomography (SPECT), positron emission tomography (PET) and magnetic resonance imaging (MRI) methods [19–21]. However, limited work has been performed to explore the relationship between functional MRI in CPI and objective sleep indices measured by PSG.

The most popular explanation of insomnia is hyperarousal or increased activities of neurons, metabolism in special areas of the brain and excretion by neuroendocrine systems [22]. Some researchers have proposed that subjects with CPI show a state of arousal and frequently experience intrusive worrisome or negative thoughts [23]. Therefore, people suffering from CPI find it difficult to initiate sleep or return to sleep after awakening due to this intrusive hyperarousal state [12]. In a previous SPECT study, CPI patients showed hypoperfusion in preselected regions, including the basal ganglia (the most decreased area), medial frontal cortex, occipital and parietal cortex, compared to good sleepers during sleep [19]. Nofzinger [20] used the PET method and found that patients with insomnia displayed increased global metabolism of glucose during both sleep and wakefulness. Moreover, patients with insomnia showed a smaller decrease in glucose cost from wakefulness to sleep in ascending reticular activating systems, the thalamus, hypothalamus and some regions related to cognition and emotion such as the hippocampus, insular, amygdala, prefrontal cortex and the anterior cingulate cortex [20].

Despite these findings, a consensus on the brain activity alterations of insomnia patients is lacking, but it is likely that insomnia is associated with regional metabolic abnormalities in regions of the brains and that these abnormalities are closely related to emotion and arousal.

Resting state functional magnetic resonance imaging (rs-fMRI) is an effective, non-radiation and non-intrusive tool that is broadly used in neurology research [24]. rs-fMRI can detect spontaneous neuronal activity and provide new insights on the pathophysiology of diseases [25]. Many neurological or mental diseases exhibit dysfunction of several distinct areas of the brain simultaneously. Previous studies have revealed synchronous activity of neurons as a necessary condition to exactly integrate and coordinate information processing [26]. Deterioration of information processing abilities and abnormalities in brain functions are observed if changes in neuronal or distinct brain synchrony occur [27]. The amplitude of low-frequency fluctuations (ALFF) is an index and its value is the average square root of power of spectrum, which is used to detect the regional spontaneous neuronal activity by rs-fMRI [28, 29]. ALFF reflects physiological signals and was higher in grey matter [24]. It's simple, easily implemented, reliable, and robust and exhibits good-to-moderate test-retest [30, 31]. Fransson and Horovitz et al. applied ALFF to detect functional modulations and pathophysiological changes while awake and during light sleep [32, 33]. ALFF has been observed in brain areas associated with cognition and emotion, such as the dorsolateral prefrontal cortex, occipital gyrus and limbic system, in insomnia patients [34]. Hence, ALFF detected by rs-fMRI is helpful for exploring alterations of brain activity in neurological or psychosomatic diseases. However, the correlations between ALFF alterations and REM sleep have not been reported.

Thus, the aim of this study was to investigate alterations of ALFF in CPI patients and explore how these changes correlate with REM sleep. Based on previous findings, we hypothesized that CPI patients will show abnormal ALFF in brain areas related with wakefulness, emotion or cognition and that these abnormalities would be associated with REM sleep indices measured by PSG.

RESULTS

Only 21 insomnia patients and 20 normal sleep participants were included in the analysis due to those nine participants head movement were exceeded head movement criterion (any part of volume in those nine participants: any of X, Y and Z direction translation was more than 2 mm; and any of roll, pitch and raw direction rotation was more than 2 degrees). Also there were no significant different head movements (including mean translation and mean rotation) between two groups.

Descriptive behavioural data

The characteristics of the participants in the CPI group and NS group are listed in Table 1. Two-sample *t*-test showed no significant differences in age and SAS scores between the two groups: $t_{(39)} = -0.85, p = 0.4$; $t_{(39)} = -1.73, p = 0.09$; Chi-Square Test showed there was no significant difference in gender: $\chi^2=0.2, p = 0.66$. However, the groups differed in education and PSQI scores: $t_{(39)} = 2.48, p = 0.02$; $t_{(39)} = 15.07, p < 0.001$.

PSG data

The examination of the sleep state of the CPI participants is presented in Table 2. All CPI patients exhibited sleep structure abnormality, and some also exhibited difficulty in falling asleep.

ALFF alterations in the CPI group compared with the NS group

Compared with the NS group, the CPI group showed significantly increased ALFF in two clusters. The first cluster primarily included regions of the bilateral rectal gyrus (peak MNI coordinate: -9, 12, -24; $t = 4.37$, cluster size = 224), while the second cluster included the bilateral lateral-nucleus and midbrain (peak MNI coordinate: 24, -9, -6, $t = 5.27$, cluster size = 213 voxels). However, the midbrain in the second cluster did not show significant difference any more after GM added as a covariate for two groups comparison analysis. Conversely, the CPI group showed significantly decreased ALFF compared with the NS group mainly in three clusters. The first cluster mainly included the left superior parietal lobule and left postcentral gyrus (peak MNI coordinate: -21, -42, 66; $t = 4.60$; cluster size = 218); the second cluster was mainly located in the bilateral cuneus (peak MNI coordinate: 3, -72, 3; $t = 4.52$, cluster size = 406); and the third cluster mainly included the left middle and inferior occipital lobule (peak MNI coordinate: -27, -87, 15; $t = 3.7$, cluster size = 206) (Figure 1; Table 3).

Correlations of regional ALFF alterations with PSG

Only between rectus gyrus, postcentral gyrus and time of insomnia, latency of REM, duration of REM, ratio of REM showed correlated. ALFF alterations in the rectus gyrus was positively correlated with time of insomnia (Pearson correlation coefficient = 0.51, $p = 0.02$) (Figure 2). ALFF alterations in the postcentral gyrus were positively correlated with latency of REM sleep (Pearson correlation coefficient = 0.44, $p = 0.04$) (Figure 2) but were negatively correlated with the duration of REM sleep (Pearson correlation coefficient = -0.47, $p = 0.03$) (Figure 2) and the ratio of REM sleep (Pearson

correlation coefficient = -0.45, $p = 0.04$) (Figure 2). One patient ALFF Z value in occipital lobule showed greater than 3. Occipital lobule showed positive correlation with sleep efficiency which not shown correlation before this abnormal ALFF Z value removed (Pearson correlation coefficient = 0.56, $p = 0.01$) (Figure 2).

DISCUSSION

The goal of the current study was to explore the alterations of ALFF in CPI patients and investigate whether these alternative ALFF regions had any correlation with PSG index and insomnia related index. The main findings are as follows. First, CPI patients showed not only increased ALFF in the bilateral lateral-nucleus, midbrain and bilateral rectal gyrus but also decreased ALFF in the left superior parietal lobule, left postcentral gyrus and left occipital area (including the left middle and inferior occipital lobule and bilateral cuneus). Second, the changes in the ALFF in the rectal gyrus were positively correlated with the time of insomnia, the changes in the ALFF in the postcentral gyrus were positively correlated with the latency of REM sleep and negatively correlated with the duration of REM sleep, and the changes in ALFF in the postcentral gyrus were negatively correlated with the ratio of REM sleep. The changes in ALFF in occipital lobule showed positive correlation with sleep efficiency after one abnormal ALFF Z value was removed. However, these regional ALFF changes were not correlated with PSQI scores. These results offer direct neuroimaging evidence for ALFF changes associated with insomnia and, in particular, changes correlated with REM sleep. In this part, we discussed the most meaningful regions associated with insomnia.

Consistent with our hypothesis, abnormalities of ALFF related to wakefulness regions were observed in insomnia patients. Many previous studies and long-standing observations have demonstrated that “hyperarousal” is the main cause of insomnia [35]. The main arousal system or activating system is the ascending reticular activating system (ARAS), which is located in the brainstem (medulla oblongata, pons and midbrain) and plays an important role in arousal and sleep. ARAS dysfunction results in abnormal sleep, including insomnia, coma or hypersomnia [36, 37]. ARAS not only modulates sleep-wake states but also enables appropriate reactions to the surrounding environment [38]. ARAS is excited by stimulation from the surrounding environment, and the stimulation signal projects from the ARAS to the cerebral cortex. Feedback or information on how to react to the stimulus is integrated by the cortex and sent to the spinal cord via the descending reticular activating system (DRAS), finally resulting in changes in body posture induced by spinal cord instruction and an adapted reaction to the stimulus. Any disturbance of ARAS activity would damage this process. Nofzinger [20] discovered that

Table 1: Descriptive behavioural data

	NS Group (20)		CPI Group (21)		Two-sample <i>T</i> Test	
	Mean	SD	Mean	SD	<i>t</i> value	<i>p</i>
Age (years)	38.65	7.40	40.62	7.52	-0.85	0.40
Education (years)	15.55	3.61	12.76	3.60	2.48	0.02
SAS	37.40	8.12	41.33	6.32	-1.73	0.09
PSQI	2.85	0.99	13.33	3.02	15.07	< 0.001

Gender(F/M)	NS Group (20)		CPI Group (21)		Chi-Square Test	
	F	M	F	M	Pearson Chi-Square	P
	14(70%)	6(30%)	16(76%)	5(24%)	0.2	0.655

F indicates female; M indicates male.

Table 2: Polysomnographic (PSG) monitoring results for the CPI group

	Time of Insomnia (years)	Percent sleep efficiency (% SE)	Latency of sleep (min)	Latency of REM (min)	Duration of REM (min)	Ratio of REM (%)
Sub1	6	54.1	18	275	10.5	3.2
Sub2	20	76.6	34	95	55.5	13.5
Sub3	1.5	62.8	43	92.5	17	4.8
Sub4	3	69.4	52.5	100	34.5	8.8
Sub5	3	73.2	60	75	64.5	16.1
Sub6	1	77.8	42.5	90	67.5	15
Sub7	10	65.1	2.5	91	36	9.9
Sub8	3	86.9	13.5	110.5	57	12.8
Sub9	2	77.5	1.5	105.5	81	18.1
Sub10	10	57.8	16	125	58	18.4
Sub11	6	87	11	29.5	168.5	32.4
Sub12	10	68.8	33	201	75.5	22.4
Sub13	7	-	37.2	21.2	114.5	23.3
Sub14	3	72.2	26.5	59	105.5	26.8
Sub15	3	58.4	10.5	141	53	16.2
Sub16	7	65.8	10	65.6	75.5	23.6
Sub17	6	89.4	19	85	80.5	17.5
Sub18	6	81.9	29	262	70.5	16.1
Sub19	5	-	66	60	68	16.4
Sub20	14	87.9	6.5	60.5	73	16.4
Sub21	2	69.3	8.5	67.5	21.5	5.8

REM, Rapid-eye movement.

wake-promoting ARAS activity and thalamus glucose metabolism were increased in primary insomnia patients. ARAS hypermetabolism would increase or heighten emotional activities and produce an arousal state and insomnia. In our study, we detected increased midbrain

ALFF in the insomnia patient group compared with the normal sleep group. The midbrain, as part of the brainstem, is a component of the ARAS. The increase in ALFF in this region indicates increased ARAS activity. The projection from the ARAS to the cerebral cortex

occurs through the thalamus. Here, we also observed increased ALFF in the lateral-nucleus, a part of the thalamus consisting of the lateral dorsal nucleus and lateral posterior nucleus that is considered an integration nucleus, in insomnia patients. Our findings support a hyperarousal state as the core cause or core predisposing factor for insomnia. Moreover, ALFF increased not only in brainstem ARAS but also in the lateral-nucleus, a vital part of the pathway between the ARAS and the cortex. After GM volume added as a covariate the midbrain ALFF showed no significance between two groups at correction level. It implied midbrain activity was sensitive to cortex structure. Previous study demonstrated long-time poor sleep was correlated brain cortex atrophy and increased this rate [39]. Thus, dysfunction of the ARAS and related pathway components may be the underlying mechanism of insomnia.

Interestingly, we observed an increase in bilateral rectus gyrus ALFF in insomnia. The rectus gyrus is part of the ventromedial prefrontal cortex (VMPFC) which played a crucial role in the generation of arousal and insomnia and its functional activation altered was caused by sleep deprivation [34, 40, 41]. Prominent bilateral orbitofrontal cortex which also as a sub-region of prefrontal cortex [41] and rectus gyrus grey matter are smaller in elderly depression [42]. These observations are consistent with a close relationship between insomnia and mental diseases such as depression and suggest ALFF of the rectus gyrus should altered in insomnia. However, we observed increased ALFF in the rectus gyrus. We provide two explanations for this finding. First, this study excluded participants with moderate or severe class anxiety in the previous 1 month; such anxiety may influence brain function or structure, and thus the degree of anxiety or

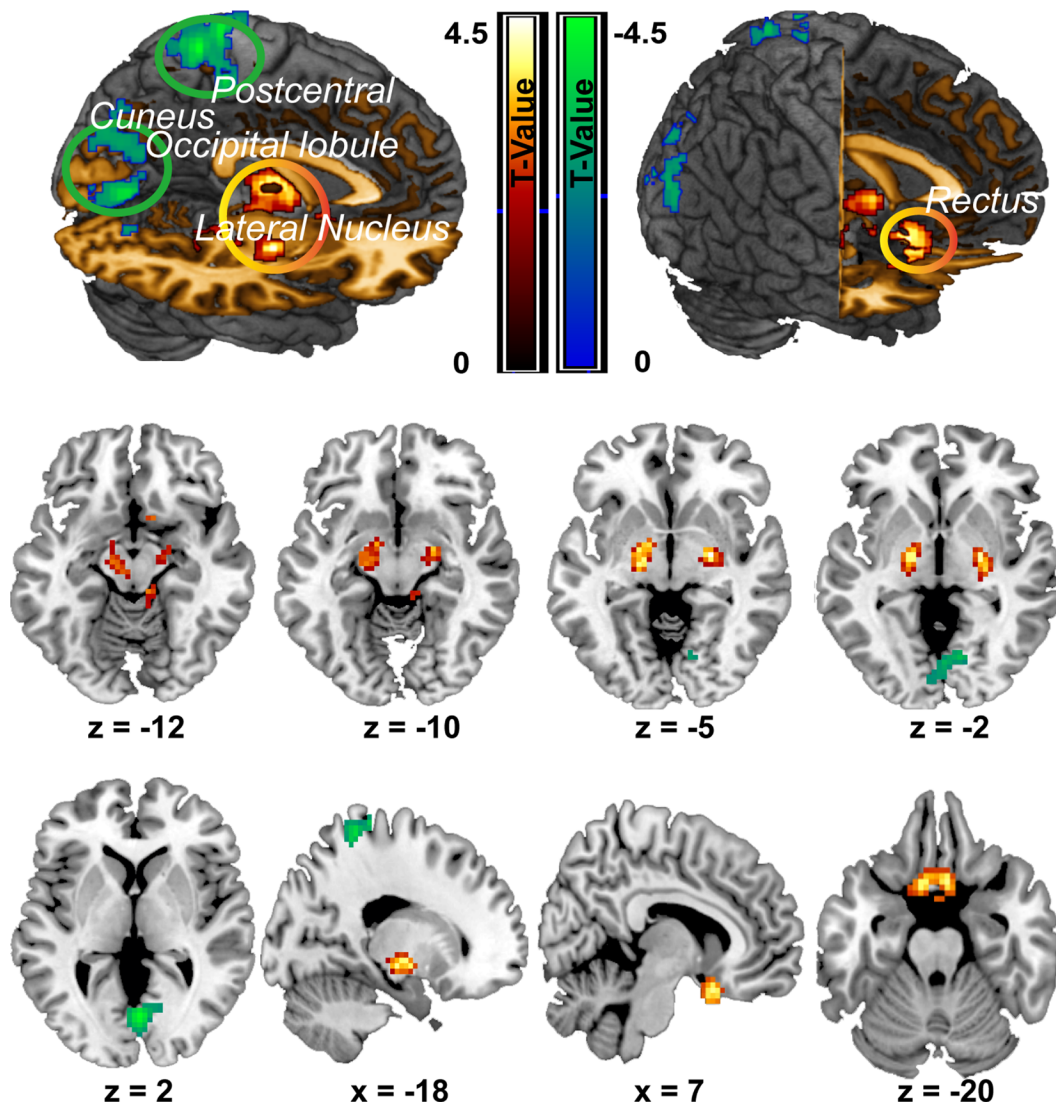


Figure 1: ALFF differences between the CPI group and NS group. Decreases in ALFF in the CPI group are highlighted in green, and increases in ALFF in the CPI group are highlighted in yellow. However, midbrain ($z = -12$, $z = -10$) was not survived after correction when GM added as a covariate.

Table 3: ALFF alterations in the CPI group compared with the NS group

	ALL Brain Regions	Peak MNI Coordinates			Cluster (number of voxels)	Peak T-value	
		x	y	x			
ALFF Decrease	Postcentral gyrus_L/ Parietal_Sup_L/ Paracentral_Lobule_L	-21	-42	66	218	4.60	
	Cuneus_L/R	3	-72	3	406	4.52	
	Occipital_Mid_L/ Occipital_Inf_L	-27	-87	15	206	3.70	
	ALFF Increase	Rectus_L/R	-9	12	-24	224	4.37
		Lateral_nucleus_L/R Midbrain	24	-9	-6	213	5.27

However, midbrain was not survived after correction when GM added as a covariate.

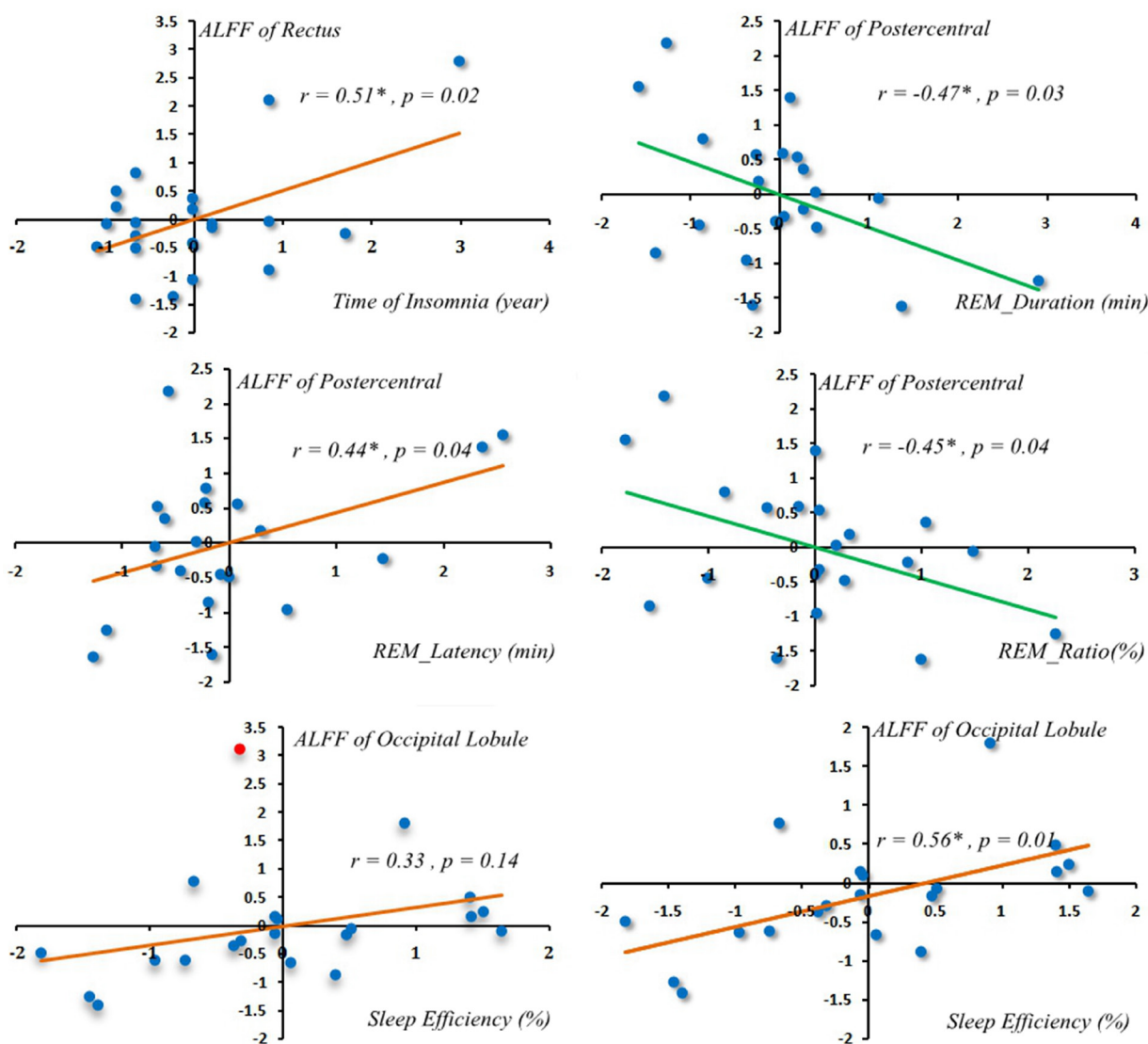


Figure 2: Correlations of regional ALFF alterations with PSG. One patient occipital lobule ALFF Z value more than 3 (the red spot indicated ALFF Z value more than 3 in the left scatterplot at the bottom row). Occipital lobule showed positive correlation with sleep efficiency after that abnormal ALFF Z value removed (Pearson correlation = 0.56, $p = 0.01$) (in the right scatterplot at the bottom row).

emotion was not considered as a factor in this research. Second, VMPFC is a region includes several sub-regions and is a area. Although its function showed abnormal in sleep deprivation, it did not described which sub-region function altered [40]. Still, rectus gyrus grey matter was reduced in elderly depression containing sleep problems, it may explained that the increased ALFF in the rectus gyrus may compensate for the long-term deficit of function of the prefrontal cortex and daytime fatigue. But how rectus gyrus morphology, function, and local activity affect each other needs more work to reveal this in next study.

In the current study, we also observed decreases in ALFF in the left superior parietal lobule, left postcentral gyrus, bilateral cuneus in the chronic insomnia patient group. The vital function of sufficient sleep for the brain is based on the appropriate regulation of brain function and brain development [1, 43, 44]. Chronic primary insomnia associated with working memory damage [45, 46] and spatial work memory deterioration [4]. The prefrontal lobe mediates working memory and stores information on spatial position [47, 48]. The superior parietal lobule projects and receives fibers from the prefrontal cortex, and the received fibers encode dynamic visual information about space and position and integrate these complex messages to form spatial working memory [49]. The prefrontal cortex and parietal cortex are activated during spatial memory tasks [47, 48], which mainly depend on the interaction between the parietal and frontal areas [50]. Any structural damage or abnormal activity in the prefrontal cortex or superior parietal lobule would disrupt this interaction. The prefrontal and parietal cortex were found regional hypometabolism after sleep deprivation [51]. The orbitalfrontal cortex is a prefrontal cortex in the frontal lobe. The bilateral orbitalfrontal cortex and the inferior parietal lobule showed ALFF decreased in short-term sleep deprivation people and parietal lobule [29, 52]. Li Yongli et al. detected decreased connectivity between the superior frontal gyrus and superior parietal lobule in insomnia patients [4]. In addition, orbitofrontal and parietal cortex grey matter volume are smaller [53] and the dorsolateral prefrontal cortex grey matter concentration is decreased in insomnia patients [54]. In addition to decreased functional connectivity decreased between the prefrontal cortex and the parietal lobule, the grey matter volume or grey matter concentration of these regions decreased. In support of the results of these previous studies, we observed decreased ALFF in the superior parietal lobule in this study. This complementary evidence indicates similar trends of alterations of structure, functional connectivity and regional activity in these regions that executed the same tasks or functions appear in insomnia.

Decreased ALFF was also observed in the left occipital lobe. Gamma-aminobutyric acid (GABA) is a vital inhibitory neurotransmitter and plays a significant role in mediation of sleep based on the sleep-wake regulation hypothesis [55, 56]. David T. Plante et al. detected an

approximately 33% reduction of GABA production in the occipital cortex of unmedicated primary insomnia patients. This observation suggests that the hyperarousal state in insomnia is correlated with decreased GABA and that an imbalance between inhibitory and excitatory function appears if there is an abnormality of the excretion of any inhibitory or excitatory neurotransmission [20, 22, 23, 57]. We observed a decrease in left occipital lobule ALFF in insomnia. Also we found occipital lobule ALFF was positive correlated with sleep efficiency after one subject abnormal ALFF value was removed. Longer period poor sleep efficiency was associated with lower occipital lobule ALFF. We suppose that occipital lobule inhibition function was impaired in initiation of sleep due to the decrease in GABA in insomnia and poor sleep efficiency. These findings provide new insights for the exploration of the correlation between alterations of ALFF and GABA in future studies to achieve a better understanding of insomnia.

In this study, ALFF alterations in the rectus gyrus were significantly positively correlated with the duration or time of insomnia. Alterations in the postcentral gyrus were positively correlated with latency of REM sleep and negatively correlated with duration of REM sleep and ratio of REM sleep. Stable REM sleep provides support for brain function homeostasis, optimally prepares the organism for emotional and social functioning and regulated cognition in the coming day, and also benefits memory consolidation [17]. These alterations of ALFF and alterations associated with REM sleep reveals a richer underlying mechanism of insomnia.

In addition to the discovery of meaningful results, the limitations of the current study should not be ignored. First, a recent research study reported that gender may cause differences in regional ALFF [34]. The sample size in this study is small. In normal sleep: female was 14 (70%) and male was 6 (30%). In insomnia group: female was 16 (76%) and male was 5 (24%). Especially the rate of male was too small. Hence in this study we did not separately analyze. Of course, we chosen only female to compare (because about 70% was female) in this part. We found occipital lobule, cuneus and postcentral gyrus ALFF decreased in patient group. And rectus and midbrain showed increased in patient group. However only occipital lobule, cuneus and postcentral gyrus can survive after correction. The results were not significant after correction may caused by small sample size. Second, the time of insomnia is different in different patients. We did not do sub-group (different duration of insomnia) analysis in this study for small sample size as well. In the future study we will increase sample size to improve these analysis. Third, absence PSG in normal volunteers was indeed a weakness. All volunteers were asked to finish PSQI questionnaire and revised diagnostic criteria for sleep. All of them were belonged to this

criteria. In future study, all normal volunteers will have PSG examination.

In conclusion, this study investigated alterations of ALFF in chronic insomnia patients. The results showed that ALFF increased in the bilateral nucleus, midbrain and rectus and decreased in the superior parietal lobule, postcentral gyrus, paracentral lobule, occipital lobule, cuneus and lingual lobule. Moreover, the alterations in the postcentral gyrus, rectus and occipital lobule were mainly associated with REM sleep index. These alterations may influence each other. Insomnia maybe is a brain network abnormality or circuit loop abnormality disease.

MATERIALS AND METHODS

Participants

Chronic primary insomnia (CPI) patients

A total of 25 primary insomnia patients were recruited from the department of Sleep and Psychology of the third affiliated hospital of The Third Military Medical University, Chongqing, China. The inclusion criteria were as follows: (1) adult patients diagnosed with CPI according to the Diagnostic and Statistical Manual of Mental Disorders, 4th Edition and PSG results; (2) absence of moderate or severe class anxiety in the last month; (3) no role of substance or medication abuse in insomnia; (4) no other sleep-related diseases, such as hypersomnia or parasomnia; (5) no additional mental disorders, central nervous system diseases, head trauma or psychiatric disorders; (6) neither pregnant nor breast-feeding. The patients' clinical details are listed in Table 1.

Normal sleep participants (NS)

A control group of 25 normal sleep volunteers was recruited through advertisement from the second affiliated hospital of The Third Military Medical University. All volunteers were recruited under the revised diagnostic criteria for defining normal sleep controls [58]. In accordance with the 1964 Helsinki declaration and its later amendments, written informed consent for this study was obtained from all individual participants, and the study was approved by the Institutional Human Participants Review Board of the second affiliated hospital of The Third Military Medical University prior to the study. All participants were thanked for their time and received financial compensation after completing all examinations.

Measures

Behavioural assessments

To consider the effect of external emotion on sleep, all participants completed the Self-Rating Anxiety Scale (SAS) questionnaire, which was considered a reliable, ecologically

valid and sensitive measurement for anxiety examination [59–61]. It contains 5 affective and 15 somatic symptoms related to anxiety [61]. Each item has a 4-point scale ranging from 'none of the time' to 'most of the time'.

Sleep assessments

The CPI and NS groups all took the Pittsburgh Sleep Quality Index (PSQI) questionnaire [62]. Additionally, the NS group were subjected to the revised diagnostic criteria for defining normal sleep [58]. The PSQI contains 9 self-report items. Higher scores are indicative of poorer quality of sleep. Following the standard of Buysse et al. (1989), a PSQI score greater than or equal to ≥ 5 was considered poor sleep. This threshold has been demonstrated to have high sensitivity and specificity for differentiating insomnia and normal sleep [62]. Therefore, the PSQI score of all participants in the CPI group in this study should be greater than or equal to ≥ 5 and the NS group PSQI should be less than 5. The NS group was also evaluated using the revised diagnostic criteria suggested by Louise et al. [58]. This test mainly evaluates 4 items: sleep disruption, sleep disorders, circadian disruption and general health. All participants in the NS group had no sleep problems.

Polysomnographic (PSG) monitoring

Only the CPI group underwent one-night PSG because most of the normal volunteers were not willing to stay overnight in the hospital to undergo the PSG examination. In the CPI group, the patient's bed time and arising time were kept as close as possible to the patient's usual sleep schedule at home. PSG was recorded following the American Academy of Sleep Medicine criteria [63]. The measurements included total sleep time (TST), time spent in bed (TIB), latency of sleep (LOS), percent sleep efficiency (% SE), sleep architecture (including the time spent in N1, N2, N3 and REM phases expressed as percentage of the total sleep period and the latency of the REM phase). Because in this sleep study we were mainly interested in the REM stage sleep, we only present the sleep data for this stage.

Resting-state fMRI image acquisition

Resting-state fMRI images and volumetric T1-weighted anatomical images were obtained using a 3T MRI scanner (HDNV Head with a 8-channel head coil, GE Healthcare, Signa HDxt, USA). The gradient strength was 50 mT/m and slew-rate was 150 T/m/s. All scans were acquired between approximately 9 p.m. and 10 p.m. each time. Functional whole-brain images were acquired using a single-shot T2* gradient-echo Echo Planar Imaging (EPI) sequence, interleaved (from bottom to up) acquisition, TR/TE = 2000/30ms, slices = 30, flip angle = 90°, thickness/slice gap = 5/0mm, matrix = 64 × 64, voxel size = 3.75 ×

3.75 × 5.0 mm³. We acquired 240 functional volumes per run. Each subject underwent only one run each time. Each run cost 8 min. The T1-weighted anatomical image scanning parameters were acquired using a 3DFSPGR sequence, echo time (TE) = 2.17 ms, repetition time (TR) = 7.18 ms, voxel size: 1.2 × 0.47 × 0.47 mm³. All subjects were asked to keep their eyes closed and remain awake and relaxed during the scanning. Foam pads and earplugs were used to minimize head movement and reduce the influence of scanner noise.

Image preprocessing

Images were processed using the DPARSF toolbox (<http://www.restfmri.net/forum/DPARSF>) [64]. This toolbox was based on Statistical Parametric Mapping 8 (SPM8) (<http://www.fil.ion.ucl.ac.uk/spm>) and implemented in Matlab (MathWorks Inc., Natick, MA, USA). We performed the following preprocessing steps: (1) the first 10 volumes images were removed for signal equilibrium and adaptation of the participant to the scanning environment; (2) slice-timing correction was performed for adjusting differences in slice acquisition times and the slice at the mid-point of each TR as reference slice; (3) head movement correction was achieved by realignment, the first scan from each volume was aligned to the first scan of the first volume. Then the images within each volume were aligned to the first image of the volume. Any of X, Y and Z direction translation was less than 2 mm; and any of roll, pitch and raw direction rotation was less than 2 degrees. The participant was excluded if any part of volume in this subject was beyond this criterion; (4) spatial normalization to the Montreal Neurological Institute (MNI) stereotactic standard space EPI template through 12-parameter affine transformation (resampling voxel size = 3mm × 3mm × 3mm through trilinear interpolation); (5) images were spatially smoothed using an isotropic Gaussian kernel of 6 mm full width at half-maximum (FWHM); (6) the time courses of various covariates were extracted as regressors of no interest to remove the potential influence of physiological artefacts (including white matter, cerebrospinal fluid, global signal and six motion parameters for head movement; here white matter and cerebrospinal fluid time course extraction masks were based upon the a-priori maps available in SPM8). The 24-parameter model containing 6 head motion parameters from the previous image volume, 6 current head motion parameters and 12 corresponding squared items was utilized to reduce effects to BLOD signal induced by head micro movements [65].

ALFF analysis

ALFF as processed using the DPARSF toolbox pipeline procedure (<http://www.restfmri.net/forum/DPARSF>). The pre-processed data were subjected to detrending and band pass filtering (0.01–0.08Hz). Following previously reported procedures [66], the filtered time series were transformed

to the frequency domain by fast Fourier transform (taper percentage = 0, fast Fourier transform length = shortest). Then, the power spectrum for each voxel was estimated. The power spectrum is proportional to the square of its amplitude in the original time series; therefore, AFLL was calculated by averaging the square root of the power spectrum within 0.01–0.08 Hz in each voxel. For standardization purposes, the ALFF of each voxel was divided by the global mean ALFF values within the priori grey matter mask to standardize the data across different subjects.

Statistical analysis

Statistical analyses of ALFF were performed in SPM8. A two-sample *t*-test was conducted in SPM8 to determine whether there were any significant regional ALFF differences between the CPI and NS groups. To control for possible confounding effects, variables such as age, gender, education, grey matter volume, mean head translation motion, mean head rotation motion and the SAS scores were entered as covariates in the GLM *t*-test model. The significance threshold was set at $p < 0.05$ (a combination threshold of voxel level at $p < 0.01$ and a cluster size > 147 voxels, which corresponded to a corrected $p < 0.05$ using AlphaSim correction). AlphaSim correction was conducted using the REST toolkit [67].

In order to further explore whether these alternative ALFF regions had any correlation with PSG index, we only did association analysis in patient group. Those clusters mean ALFF (which values differed significantly between the CPI and NS groups) were extracted using the REX toolbox (<http://web.mit.edu/swg/software.htm>). Before correlation analysis we checked those ALFF value extracted from previous step and PSG index in order to make sure all data or variables value should less than 3 standard score (Z transformation). If any variable value was more 3 standard deviation it would be moved. Then, the Pearson correlation was used to compute the correlation between these ALFF alternative regions and sub-items of PSG using IBM SPSS Statistics 22 software (<http://www-01.ibm.com/software/analytics/spss/>).

Abbreviations

CPI: chronic primary insomnia; ALFF: the amplitude of low-frequency fluctuations; REM sleep: rapid eye movement; NREM: non rapid eye movement; PSG: polysomnography; ARAS: the ascending reticular activating system; SAS: Self-Rating Anxiety Scale; PSQI: Pittsburgh Sleep Quality Index; TST: total sleep time; TIB: time spent in bed; LOS: latency of sleep; % SE : percent sleep efficiency.

Authors' contributions

Q.R. collected, analyzed, interpreted the data, and wrote the paper. J.C. helped to collect and analyze the

data. C.L. and L.Z. helped to collect the data. F.G.Y. analyzed PSG data. T.S.S helped to adjust parameters of resting-state MRI scan. J.X.M helped statistical analysis. L.W. and G.X. W. analyzed image data. D.G. made the diagnosis of insomnia and helped to analyze PSG data. D.Z. interpreted the data, and help to wrote the paper.

ACKNOWLEDGMENTS

Thanks all these people's work for this study.

CONFLICTS OF INTEREST

The authors declare that they have no conflicts of interest.

FUNDING

This study was founded by the National Natural Science Foundation of China (81471635), and the Clinical Research Program of the second affiliated hospital of The Third Military Medical University (2014YL034).

REFERENCES

- Riemann D, Kloepfer C, Berger M. Functional and structural brain alterations in insomnia: implications for pathophysiology. *Eur J Neurosci*. 2009; 29:1754–60.
- Ohayon MM. Epidemiology of insomnia: what we know and what we still need to learn. *Sleep Med Rev*. 2002; 6:97–111.
- Merrigan JM, Buysse DJ, Bird JC, Livingston EH. JAMA patient page. *Insomnia*. *JAMA*. 2013; 309:733–733.
- Li Y, Wang E, Zhang H, Dou S, Liu L, Tong L, Lei Y, Wang M, Xu J, Shi D, Zhang Q. Functional connectivity changes between parietal and prefrontal cortices in primary insomnia patients: evidence from resting-state fMRI. *Eur J Med Res*. 2014; 19:32.
- Reimund E. The free radical flux theory of sleep. *Med Hypotheses*. 1994; 43:231–33.
- Whitton S. Nighty night sleep tight—health benefits of a good night's sleep. *Insight*. 2012; 37:22–22.
- Luyster FS, Strollo PJ Jr, Zee PC, Walsh JK, and Boards of Directors of the American Academy of Sleep Medicine and the Sleep Research Society. *Sleep: a health imperative*. *Sleep*. 2012; 35:727–34.
- Edinger JD, Means MK, Carney CE, Krystal AD. Psychomotor performance deficits and their relation to prior nights' sleep among individuals with primary insomnia. *Sleep*. 2008; 31:599–607.
- Carey TJ, Moul DE, Pilkonis P, Germain A, Buysse DJ. Focusing on the experience of insomnia. *Behav Sleep Med*. 2005; 3:73–86.
- Altena E, Van Der Werf YD, Strijers RL, Van Someren EJ. Sleep loss affects vigilance: effects of chronic insomnia and sleep therapy. *J Sleep Res*. 2008; 17:335–43.
- Varkevisser M, Kerkhof GA. Chronic insomnia and performance in a 24-h constant routine study. *J Sleep Res*. 2005; 14:49–59.
- Baglioni C, Spiegelhalder K, Lombardo C, Riemann D. Sleep and emotions: a focus on insomnia. *Sleep Med Rev*. 2010; 14:227–38.
- Kales A, Caldwell AB, Preston TA, Healey S, Kales JD. Personality patterns in insomnia. Theoretical implications. *Arch Gen Psychiatry*. 1976; 33:1128–24.
- Kales A, Caldwell AB, Soldatos CR, Bixler EO, Kales JD. Biopsychobehavioral correlates of insomnia. II. Pattern specificity and consistency with the Minnesota Multiphasic Personality Inventory. *Psychosom Med*. 1983; 45:341–56.
- Kumar A, Vaidya AK. Anxiety as a personality dimension of short and long sleepers. *J Clin Psychol*. 1984; 40:197–98.
- Huang Z, Liang P, Jia X, Zhan S, Li N, Ding Y, Lu J, Wang Y, Li K. Abnormal amygdala connectivity in patients with primary insomnia: evidence from resting state fMRI. *Eur J Radiol*. 2012; 81:1288–95.
- Goldstein AN, Walker MP. The role of sleep in emotional brain function. *Annu Rev Clin Psychol*. 2014; 10:679–708.
- Khazaie H, Veronese M, Noori K, Emamian F, Zarei M, Ashkan K, Leschziner GD, Eickhoff CR, Eickhoff SB, Morrell MJ, Osorio RS, Spiegelhalder K, Tahmasian M, Rosenzweig I. Functional reorganization in obstructive sleep apnoea and insomnia: A systematic review of the resting-state fMRI. *Neurosci Biobehav Rev*. 2017; 77:219–31.
- Smith MT, Perlis ML, Chengazi VU, Pennington J, Soeffing J, Ryan JM, Giles DE. Neuroimaging of NREM sleep in primary insomnia: a Tc-99m-HMPAO single photon emission computed tomography study. *Sleep*. 2002; 25:325–35.
- Nofzinger E, Buysse D, Germain A, Price J, Miewald J, Kupfer D. Functional neuroimaging evidence for hyperarousal in insomnia. *Am J Psychiatry*. 2004; 161:2126–2128.
- Wang T, Li S, Jiang G, Lin C, Li M, Ma X, Zhan W, Fang J, Li L, Li C, Tian J. Regional homogeneity changes in patients with primary insomnia. *Eur Radiol*. 2016; 26:1292-300.
- Bonnet MH, Arand DL. Hyperarousal and insomnia: state of the science. *Sleep Med Rev*. 2010; 14:9–15.
- Riemann D, Spiegelhalder K, Feige B, Voderholzer U, Berger M, Perlis M, Nissen C. The hyperarousal model of insomnia: a review of the concept and its evidence. *Sleep Med Rev*. 2010; 14:19–31.
- Biswal B, Yetkin FZ, Haughton VM, Hyde JS. Functional connectivity in the motor cortex of resting human brain using echo-planar MRI. *Magn Reson Med*. 1995; 34:537–41.
- Mulders PC, van Eijndhoven PF, Schene AH, Beckmann CF, Tendolkar I. Resting-state functional connectivity in major depressive disorder: A review. *Neurosci Biobehav Rev*. 2015; 56:330–44.
- Buzsáki G, Draguhn A. Neuronal oscillations in cortical networks. *Science*. 2004; 304:1926–1929.

27. Zhang Z, Liu Y, Jiang T, Zhou B, An N, Dai H, Wang P, Niu Y, Wang L, Zhang X. Altered spontaneous activity in Alzheimer's disease and mild cognitive impairment revealed by Regional Homogeneity. *Neuroimage*. 2012; 59:1429–40.
28. Lu H, Zuo Y, Gu H, Waltz JA, Zhan W, Scholl CA, Rea W, Yang Y, Stein EA. Synchronized delta oscillations correlate with the resting-state functional MRI signal. *Proc Natl Acad Sci USA*. 2007; 104:18265–69.
29. Gao L, Bai L, Zhang Y, Dai XJ, Netra R, Min Y, Zhou F, Niu C, Dun W, Gong H, Zhang M. Frequency-dependent changes of local resting oscillations in sleep-deprived brain. *PLoS One*. 2015; 10:e0120323.
30. Zuo XN, Di Martino A, Kelly C, Shehzad ZE, Gee DG, Klein DF, Castellanos FX, Biswal BB, Milham MP. The oscillating brain: complex and reliable. *Neuroimage*. 2010; 49:1432–45.
31. Turner JA, Chen H, Mathalon DH, Allen EA, Mayer AR, Abbott CC, Calhoun VD, Bustillo J. Reliability of the amplitude of low-frequency fluctuations in resting state fMRI in chronic schizophrenia. *Psychiat Res*. 2012; 201:253–255.
32. Fransson P. Spontaneous low-frequency BOLD signal fluctuations: an fMRI investigation of the resting-state default mode of brain function hypothesis. *Hum Brain Mapp*. 2005; 26:15–29.
33. Horowitz SG, Fukunaga M, de Zwart JA, van Gelderen P, Fulton SC, Balkin TJ, Duyn JH. Low frequency BOLD fluctuations during resting wakefulness and light sleep: a simultaneous EEG-fMRI study. *Hum Brain Mapp*. 2008; 29:671–82.
34. Dai X, Nie X, Liu X, Pei L, Jiang J, Peng D, Gong H, Zeng X, Wang Y, Zhan Y. Gender Differences in Regional Brain Activity in Patients with Chronic Primary Insomnia: Evidence from a Resting-State fMRI Study. *J Clin Sleep Med*. 2016; 12:363-74.
35. Bonnet MH, Arand DL. Hyperarousal and insomnia. *Sleep Med Rev*. 1997; 1:97–108.
36. Tortorolo P, Vanini G. [New concepts in relation to generating and maintaining arousal] [Article in Spanish]. *Rev Neurol*. 2010; 50:747–58.
37. Moruzzi G, Magoun HW. Brain stem reticular formation and activation of the EEG. *Electroencephalogr Clin Neurophysiol*. 1949; 1:455–73.
38. Garcia-Rill E, Kezunovic N, Hyde J, Simon C, Beck P, Urbano FJ. Coherence and frequency in the reticular activating system (RAS). *Sleep Med Rev*. 2013; 17:227–38.
39. Sexton CE, Storsve AB, Walhovd KB, Johansen-Berg H, Fjell AM. Poor sleep quality is associated with increased cortical atrophy in community-dwelling adults. *Neurology*. 2014; 83:967–73.
40. Libedinsky C, Smith DV, Teng CS, Namburi P, Chen VW, Huettel SA, Chee MW. Sleep deprivation alters valuation signals in the ventromedial prefrontal cortex. *Front Behav Neurosci*. 2011; 5:70.
41. Killgore WD, Schwab ZJ, Kipman M, DelDonno SR, Weber M. Voxel-based morphometric gray matter correlates of daytime sleepiness. *Neurosci Lett*. 2012; 518:10–13.
42. Ballmaier M, Toga AW, Blanton RE, Sowell ER, Lavretsky H, Peterson J, Pham D, Kumar A. Anterior cingulate, gyrus rectus, and orbitofrontal abnormalities in elderly depressed patients: an MRI-based parcellation of the prefrontal cortex. *Am J Psychiatry*. 2004; 161:99–108.
43. Colrain IM. Sleep and the brain. *Neuropsychol Rev*. 2011; 21:1–4.
44. Bootzin RR, Epstein DR. Understanding and treating insomnia. *Annu Rev Clin Psychol*. 2011; 7:435–58.
45. Nissen C, Kloepfer C, Feige B, Piosczyk H, Spiegelhalder K, Voderholzer U, Riemann D. Sleep-related memory consolidation in primary insomnia. *J Sleep Res*. 2011; 20:129–36.
46. Walker MP. Cognitive consequences of sleep and sleep loss. *Sleep Med*. 2008; 9 Suppl 1: S29–34.
47. Ricciardi E, Bonino D, Gentili C, Sani L, Pietrini P, Vecchi T. Neural correlates of spatial working memory in humans: a functional magnetic resonance imaging study comparing visual and tactile processes. *Neuroscience*. 2006; 139:339–49.
48. Curtis CE. Prefrontal and parietal contributions to spatial working memory. *Neuroscience*. 2006; 139:173–80.
49. Rao SC, Rainer G, Miller EK. Integration of what and where in the primate prefrontal cortex. *Science*. 1997; 276:821–24.
50. Walter H, Bretschneider V, Grön G, Zurowski B, Wunderlich AP, Tomczak R, Spitzer M. Evidence for quantitative domain dominance for verbal and spatial working memory in frontal and parietal cortex. *Cortex*. 2003; 39:897–911.
51. Thomas M, Sing H, Belenky G, Holcomb H, Mayberg H, Dannals R, Wagner H Jr, Thorne D, Popp K, Rowland L, Welsh A, Balwinski S, Redmond D. Neural basis of alertness and cognitive performance impairments during sleepiness. I. Effects of 24 h of sleep deprivation on waking human regional brain activity. *J Sleep Res*. 2000; 9:335–52.
52. Li C, Ma X, Dong M, Yin Y, Hua K, Li M, Li C, Zhan W, Li C, Jiang G. Abnormal spontaneous regional brain activity in primary insomnia: a resting-state functional magnetic resonance imaging study. *Neuropsychiatr Dis Treat*. 2016; 12:1371–78.
53. Altena E, Vrenken H, Van Der Werf YD, van den Heuvel OA, Van Someren EJ. Reduced orbitofrontal and parietal gray matter in chronic insomnia: a voxel-based morphometric study. *Biol Psychiatry*. 2010; 67:182–85.
54. Joo EY, Noh HJ, Kim JS, Koo DL, Kim D, Hwang KJ, Kim JY, Kim ST, Kim MR, Hong SB. Brain gray matter deficits in patients with chronic primary insomnia. *Sleep*. 2013; 36:999–1007.
55. Lu J, Sherman D, Devor M, Saper CB. A putative flip-flop switch for control of REM sleep. *Nature*. 2006; 441:589–94.
56. Plante DT, Jensen JE, Schoerning L, Winkelman JW. Reduced γ -aminobutyric acid in occipital and anterior

- cingulate cortices in primary insomnia: a link to major depressive disorder? *Neuropsychopharmacology*. 2012; 37:1548–57.
57. Klumpers UM, Veltman DJ, Drent ML, Boellaard R, Comans EF, Meynen G, Lammertsma AA, Hoogendijk WJ. Reduced parahippocampal and lateral temporal GABAA-[11C]flumazenil binding in major depression: preliminary results. *Eur J Nucl Med Mol Imaging*. 2010; 37:565–74.
 58. Beattie L, Espie CA, Kyle SD, Biello SM. How are normal sleeping controls selected? A systematic review of cross-sectional insomnia studies and a standardized method to select healthy controls for sleep research. *Sleep Med*. 2015; 16:669–77.
 59. Olatunji BO, Deacon BJ, Abramowitz JS, Tolin DF. Dimensionality of somatic complaints: factor structure and psychometric properties of the Self-Rating Anxiety Scale. *J Anxiety Disord*. 2006; 20:543–61.
 60. Jegede RO. Psychometric attributes of the Self-Rating Anxiety Scale. *Psychol Rep*. 1977; 40:303–06.
 61. Zung WW. A rating instrument for anxiety disorders. *Psychosomatics*. 1971; 12:371–79.
 62. Buysse DJ, Reynolds CF 3rd, Monk TH, Berman SR, Kupfer DJ. The Pittsburgh Sleep Quality Index: a new instrument for psychiatric practice and research. *Psychiatry Res*. 1989; 28:193–213.
 63. Berry RB, Brooks R, Gamaldo CE, Harding S, Marcus C, Vaughn B. The AASM Manual for the Scoring of Sleep and Associated Events. Rules, Terminology and Technical Specifications. Darien (Illinois): American Academy of Sleep Medicine. 2012.
 64. Chao-Gan Y, Yu-Feng Z. DPARSF: a MATLAB toolbox for” pipeline” data analysis of resting-state fMRI. *Front Syst Neurosci*. 2010; 4:13.
 65. Satterthwaite TD, Elliott MA, Gerraty RT, Ruparel K, Loughead J, Calkins ME, Eickhoff SB, Hakonarson H, Gur RC, Gur RE, Wolf DH. An improved framework for confound regression and filtering for control of motion artifact in the preprocessing of resting-state functional connectivity data. *Neuroimage*. 2013; 64:240–56.
 66. Zang YF, He Y, Zhu CZ, Cao QJ, Sui MQ, Liang M, Tian LX, Jiang TZ, Wang YF. Altered baseline brain activity in children with ADHD revealed by resting-state functional MRI. *Brain Dev*. 2007; 29:83–91.
 67. Song XW, Dong ZY, Long XY, Li SF, Zuo XN, Zhu CZ, He Y, Yan CG, Zang YF. REST: a toolkit for resting-state functional magnetic resonance imaging data processing. *PLoS One*. 2011; 6:e25031.