

Biomarker analysis of the phase 3 TORCH trial for first line erlotinib *versus* chemotherapy in advanced non-small cell lung cancer patients

Lucia Kim^{1,12,*}, Mauro Saieg^{1,13,*}, Massimo Di Maio^{2,14,*}, Ciro Gallo^{3,*}, Charles Butts⁴, Fortunato Ciardiello⁵, Ronald Feld⁶, Dengxiao Cheng⁶, Vittorio Gebbia⁷, Marco Angelo Burgio⁸, Yasmin Alam⁹, Simona Signoriello³, Antonio Rossi¹⁰, Natasha Leigh⁶, Paolo Maione¹⁰, Alessandro Morabito², Geoffrey Liu^{6,**}, Ming-Sound Tsao^{1,**}, Francesco Perrone^{2,**} and Cesare Gridelli^{10,11,**}

¹ Department of Pathology, University Health Network, Princess Margaret Cancer Center and Department of Laboratory Medicine and Pathobiology, University of Toronto, Toronto, Canada

² National Cancer Institute, G. Pascale Foundation, IRCCS, Naples, Italy

³ Department of Mental Health and Preventive Medicine, Chair of Statistics, Second University of Naples, Naples, Italy

⁴ Medical Oncology, Cross Cancer Institute, Edmonton, Canada

⁵ Medical Oncology, Second University, Naples, Italy

⁶ Division of Hematology and Oncology, Princess Margaret Cancer Centre and Department of Medicine, University of Toronto, Toronto, Canada

⁷ Medical Oncology, Casa di Cura La Maddalena, Palermo, Italy

⁸ Department of Medical Oncology, Istituto Scientifico Romagnolo per lo Studio e la Cura dei Tumori IRCCS, Meldola, Italy

⁹ Medical Oncology, Windsor Regional Cancer Centre, Windsor, Canada

¹⁰ Department of Oncology/Hematology, Division of Medical Oncology, "S.G. Moscati" Hospital, Avellino, Italy

¹¹ On behalf of the TORCH Investigators

¹² Department of Pathology, Inha University School of Medicine, Incheon, South Korea

¹³ Santa Casa Medical School, Sao Paulo, SP, Brazil

¹⁴ University of Turin, Turin, Italy

* Co-first author

** Co-last author

Correspondence to: Cesare Gridelli, email: cgridelli@libero.it

Keywords: NSCLC, EGFR TKI, biomarker analysis, predictive factors, prognostic factors

Received: November 09, 2016

Accepted: February 01, 2017

Published: February 25, 2017

Copyright: Kim et al. This is an open-access article distributed under the terms of the Creative Commons Attribution License 3.0 (CC BY 3.0), which permits unrestricted use, distribution, and reproduction in any medium, provided the original author and source are credited.

ABSTRACT

Background: The TORCH phase III trial compared the efficacy of first-line erlotinib followed by chemotherapy at progression (experimental arm) with the reverse sequence (standard arm) in unselected advanced non-small cell lung cancer (NSCLC) patients. Here we report biomarker analyses.

Methods: *EGFR* and *KRAS* mutation, expression of *EGFR* family members and of *cMET* and *PTEN* and *EGFR* and *ABCG2* germline polymorphisms were tested on tumor tissue or blood samples to either confirm previously proposed predictive role or describe it in an explorative setting. Progression-free survival (PFS) was the primary end-point, overall survival, response rate and side effects (diarrhoea and skin toxicity) were secondary end-points. Interactions between biomarkers and treatment were studied with multivariable models (either Cox model or logistic regression). Statistical analyses accounted for multiple comparisons.

Results: At least one biomarker was assessed in 324 out of 760 patients in the TORCH study. *EGFR* mutation was more common in female ($P = 0.0001$), East Asians

($P < 0.0001$) and never smoker ($P < 0.0001$) patients; low MET protein expression by IHC (H-score < 200) was more frequent in squamous ($P < 0.00009$) and ABCG2 C/A or A/A polymorphism was more frequent among East-Asian patients ($P = 0.0003$). A significant interaction was found for *EGFR* mutation in PFS and response rate analyses while no predictive effect on OS was found for any biomarker. No biomarker tested was prognostic for PFS and OS. No polymorphism was significantly associated with skin toxicity or diarrhea.

Conclusion: In the present study, beyond the known role of *EGFR* mutation, no other biomarker has predictive or prognostic role.

INTRODUCTION

The discovery of oncogenic mutations in the tyrosine kinase (TK) domain of the epidermal growth factor receptor (*EGFR*) gene, and sensitivity of mutant lung cancers to *EGFR*-TK inhibitors (TKIs), have revolutionized the treatment of advanced NSCLC. Erlotinib, one of the first generation *EGFR*-TKIs, has become a standard first line drug for patients with *EGFR* mutant lung cancers.[1] However, only 60-80% of NSCLC patients with *EGFR* mutant tumour respond to *EGFR*-TKI therapy,[2-5] while a small proportion of patients with *EGFR* wild-type tumors may also benefit from this class of drugs.[6, 7] Primary resistance to *EGFR*-TKIs has been attributed to various factors, including *EGFR* exon 20 insertion mutations.[8, 9] Patients whose tumors harbor *KRAS* mutation are rarely responsive to *EGFR*-TKIs and *KRAS* mutation might serve as a predictor of resistance to *EGFR*-TKIs.[10, 11] Activation of alternative signaling pathways including mutations in *BRAF*, *PIK3CA* and loss of PTEN have also been implicated as resistance mechanisms in preclinical studies.[12, 13] In addition, germline polymorphisms involving the promoter and intron 1 transcription enhancer regions of the *EGFR* gene and the *ABCG2* multidrug transporter gene have also been reported as modifiers of response to *EGFR*-TKI therapy.[14-16]

The TORCH (Tarceva OR CHemotherapy) trial was an Italian-Canadian multicenter, open-label, randomized phase III trial comparing first line erlotinib followed by chemotherapy (cisplatin-gemcitabine) at progression, with the reverse standard sequence of first-line chemotherapy followed by erlotinib, in unselected advanced stage IIIB and IV, predominantly Caucasian, NSCLC patients.[17] The study was terminated early due to inferiority of the experimental arm (erlotinib first) in terms of overall survival (OS). In this manuscript, we summarize the results of confirmatory and exploratory analyses of the impact of biomarkers on clinical outcomes in this trial including *EGFR* gene copy number gains, *KRAS* mutations, immunohistochemical expression of *EGFR* family members, cMET and PTEN, and *EGFR* and *ABCG2* germline polymorphisms, in addition to *EGFR* mutations that have already been partially reported.[17]

RESULTS

Details of patients' flow and samples available for each biomarker are reported in Supplementary Figure S2. 556 patients consented to biomarker studies and at least one biomarker was tested for 324 (42.6%) patients (study population). Baseline characteristics of the biomarker population were comparable to both the population of patients ($N = 673$) enrolled in centers that provided at least one sample and the whole trial patient population ($N = 760$) (Supplementary Table S2).

Distribution of biomarkers categories is reported in Table 1. All biomarkers were balanced between treatment arms. Due to low prevalence or absence of positive cases, HER2 and HER3 were excluded from further analyses.

Associations between each biomarker and baseline patients characteristics are described in Supplementary Tables S3 to S13. According to the predefined 0.001 threshold for statistical significance, *EGFR* mutation was significantly more common in female ($p = 0.0001$), East Asians ($P < 0.0001$) and never smoker ($P < 0.0001$) patients; low MET protein expression by IHC (H-score < 200) was more frequent in case of squamous carcinoma ($P = 0.00009$) and ABCG2 C/A or A/A polymorphism was more frequent among East-Asian patients ($P = 0.0003$).

Pairwise association between biomarkers is reported in Supplementary Table S14. No association was significant at the predefined level of 0.001, with the exception of the obvious one between the two scoring systems for MET protein expression by IHC.

The modifying effects of biomarkers on PFS, OS and response to first treatment are provided in Figures 1 to 3. A significant interaction was only found for *EGFR* mutation in PFS (Figure 1) and response rate analyses (Figure 3) while no predictive effect on OS was found for any biomarker (Figure 2) at the predefined Bonferroni-Holm sequential significance levels.

In an exploratory unplanned analysis of patients with non-mutated *EGFR* or *EGFR* mutation unknown status, ABCG2 polymorphism had a significant ($P = 0.003$) interaction with treatment effect on PFS (HR for erlotinib vs chemotherapy was 0.62, 95%CI 0.28-1.34 among A/C or A/A and 2.07, 95%CI 1.54-2.80 among C/C ABCG2 polymorphisms). Further, adjustment for the Asian ethnicity, which was significantly more common in

the A/C or A/A arm when compared to the C/C arm, led to similar results.

None of the tested biomarkers was prognostic for PFS and OS at the pre-defined significance level of 0.01 (Table 2).

None of the polymorphisms evaluated were significantly associated with skin toxicity or diarrhea (Supplementary Table S15).

DISCUSSION

As an ancillary analysis of the TORCH trial, we explored potential biomarkers for predicting the response or resistance to the EGFR-TKIs compared with chemotherapy. We assessed both biomarker-by-treatment interactions and prognostic value of the proposed biomarkers. Follow-up data were mature and a conservative statistical analysis plan was applied accounting for multiplicity of comparisons and reducing the expected inflation of false positive results. As a major limitation, however, biomarkers' evaluation was not mandatory in the trial and was actually performed only in 43% of the patients; nonetheless, this rate compares well

with other trials in advanced lung cancer where biologic sample collection was not mandatory.

Except for *EGFR* mutation,[17] we failed to confirm the predictive role of any other biomarker, including high expression of HER2, HER3, cMET and loss of PTEN expression, that were studied due to their potential role in activating bypass survival pathway downstream of EGFR.[18, 19] Among these markers, we found no or very few cases with high expression of HER2 and HER3. Interestingly, the first treatment progression free hazard ratio for high and low cMET expression (H-score ≥ 200 vs < 200) was 3.04 vs. 1.45, with borderline interaction p value of 0.056. These results confirm that first line chemotherapy is superior to erlotinib irrespective of cMET expression level, however suggesting that any potential activity of erlotinib is significantly less in tumor that express very high level of cMET. Unfortunately, the low number of patients with *EGFR* mutant tumor exclude us from studying potential role of high MET expression as a potential negative predictive marker in first line EGFR TKI therapy.

The predictive role of *EGFR* gene copy number as determined by fluorescence in situ hybridization (FISH)

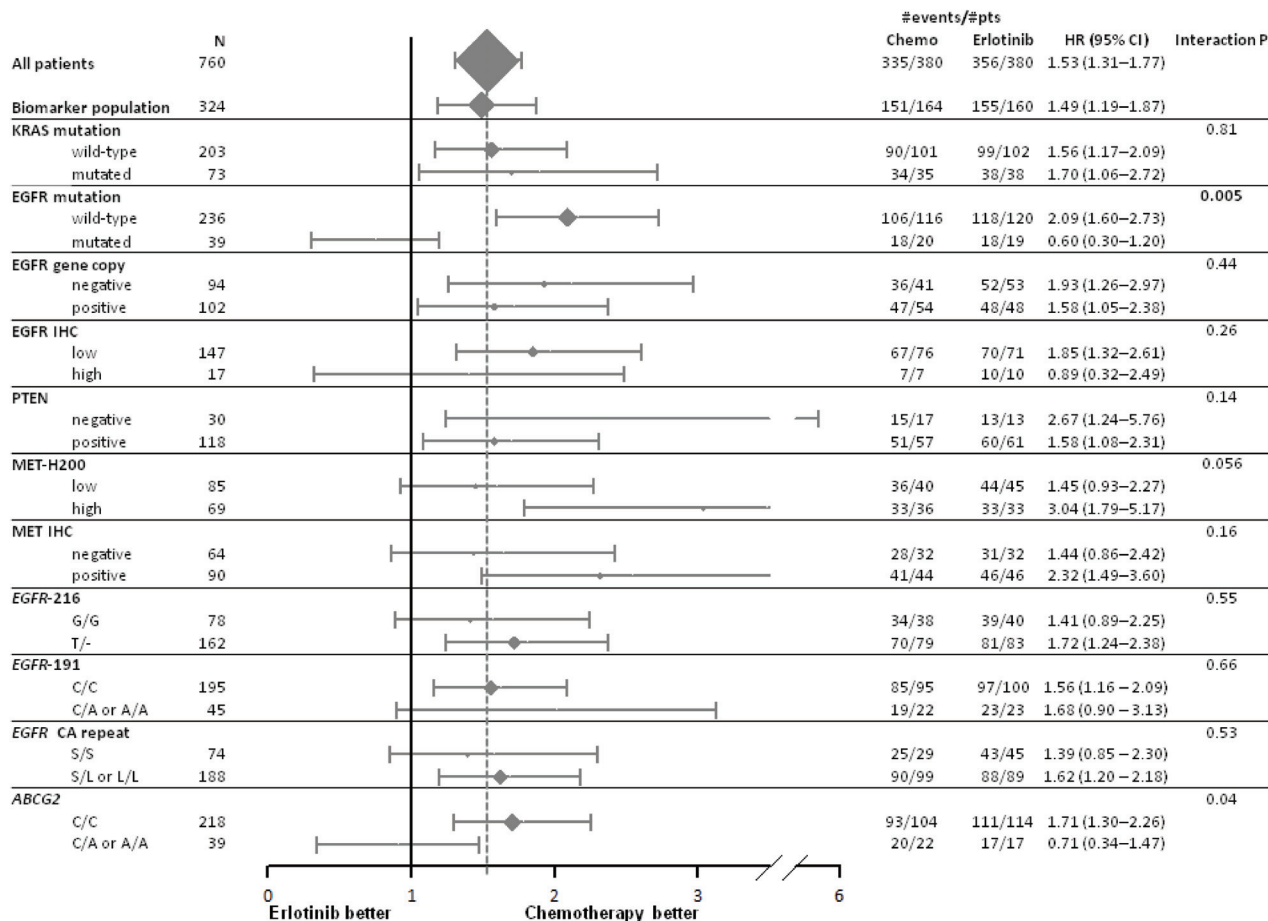


Figure 1: Forest plot of progression free survival by treatment arm and biomarkers. Hazard ratio (HR) < 1 means a lower risk of progression or death for patients treated with first-line erlotinib.

Table 1: Distribution of biomarkers according to treatment arm, within the biomarker population (n=324 patients with at least one biomarker available)

Biomarker	Category	Standard Arm (G/C) (N=164)	Experimental Arm (E) (N=160)	Overall (N=324)	P value*
Genomic Testing					
KRAS mutation	Wild type	101 (62%)	102 (64%)	203 (63%)	0.49
	Mutant	35 (21%)	38 (24%)	73 (23%)	
	Unknown	28 (17%)	20 (12%)	48 (15%)	
EGFR mutation	Wild type	116 (71%)	120 (75%)	236 (73%)	0.59
	Mutant	20 (12%)	19 (12%)	39 (12%)	
	Unknown	28 (17%)	21 (13%)	49 (15%)	
EGFR gene copy	Low	41 (25%)	53 (33%)	94 (29%)	0.27
	High	54 (33%)	48 (30%)	102 (31%)	
	Unknown	69 (42%)	59 (37%)	128 (40%)	
Immunohistochemical Staining					
EGFR IHC score	Low	76 (46%)	71 (44%)	147 (45%)	0.71
	High	7 (4%)	10 (6%)	17 (5%)	
	Unknown	81 (49%)	79 (49%)	160 (49%)	
PTEN	Negative	17 (10%)	13 (8%)	30 (9%)	0.70
	Positive	57 (35%)	61 (38%)	118 (36%)	
	Unknown	90 (55%)	86 (54%)	176 (54%)	
MET-H200	Low	40 (24%)	45 (28%)	85 (26%)	0.75
	High	36 (22%)	33 (21%)	69 (21%)	
	Unknown	88 (54%)	82 (51%)	170 (52%)	
MET-IHC	Negative	32 (20%)	32 (20%)	64 (20%)	0.90
	Positive	44 (27%)	46 (29%)	90 (28%)	
	Unknown	88 (54%)	82 (51%)	170 (52%)	
HER2	Low	59 (36%)	56 (35%)	115 (35%)	0.83
	High	2 (1%)	1 (1%)	3 (1%)	
	Unknown	103 (63%)	103 (64%)	206 (64%)	
HER3	Low	74 (45%)	70 (44%)	144 (44%)	0.80
	High	0	0	0	
	Unknown	90 (55%)	90 (56%)	180 (56%)	
Germline polymorphisms					
EGFR -216	G/G	38 (23%)	40 (25%)	78 (24%)	0.52
	G/T or T/T	79 (48%)	83 (52%)	162 (50%)	
	Unknown	47 (29%)	37 (23%)	84 (26%)	
EGFR -191	C/C	95 (58%)	100 (62%)	195 (60%)	0.52
	C/A or A/A	22 (13%)	23 (14%)	45 (14%)	
	Unknown	47 (29%)	37 (23%)	84 (26%)	
EGFR CA repeat	S/S	29 (18%)	45 (28%)	74 (23%)	0.06
	S/L or L/L	99 (60%)	89 (56%)	188 (58%)	
	Unknown	36 (22%)	26 (16%)	62 (19%)	
ABCG2	C/C	104 (63%)	114 (71%)	218 (67%)	0.32
	C/A or A/A	22 (13%)	17 (11%)	39 (12%)	
	Unknown	38 (23%)	29 (18%)	67 (21%)	

*Chi square test, comparing Standard and Experimental Arms; EGFR CA repeat S (short): ≤16CA repeat; L (Long): ≥17CA repeat; Unknowns are due to lack of remaining material available for biomarker assessment.

is a matter of controversy.[3, 20-22] As high percentages of *EGFR* mutant NSCLC also demonstrate amplification of the gene, it was postulated that the predictiveness of *EGFR* high gene copy number could be accounted by the presence of mutation. In fact, in the IPASS patients, *EGFR* FISH was not predictive in *EGFR* wild type patients.[23] The results of our analysis in the TORCH patients confirm this finding (Supplementary Figure S3).

Despite suggestions that germline polymorphisms may be associated with erlotinib efficacy, none has consistently been associated with survival or response.[15, 16] In the TORCH trial, we found a significant interaction between the *ABCG2* +421 polymorphism and PFS. The non significant finding of interaction for OS ($P = 0.11$) may have been favoured by the cross-over design. In this trial, the vast majority of patients likely carried wild type *EGFR*, which is the primary driver of best initial response. In contrast, wild type *EGFR* produces mostly stable disease responses, and thus it was unlikely that initial response would be differentiated in this population by genetic polymorphisms; indeed we found no relationship between any of the polymorphisms and best initial

response to therapy. Two exploratory analyses of *ABCG2* +421 were performed. This *ABCG2* polymorphism had been evaluated in one other randomized control trial involving erlotinib as the experimental drug but in a different setting: the BR.21 trial of chemo-refractory placebo-controlled metastatic/advanced stage patients found no significantly interaction associations between this polymorphism and the trial arm for any treatment outcomes.[15] The same polymorphisms may affect toxicity.[15, 24] However, in the TORCH trial, we found no significant or even trends in relationship with any of the main toxicities of erlotinib, but small samples sizes limited any firm conclusions.

In conclusion, an extensive exploratory biomarker analysis in TORCH trial failed to identify additional predictive or prognostic biomarkers beyond *EGFR* mutation in first line erlotinib therapy.

MATERIALS AND METHODS

The details of the TORCH clinical trial eligibility and conduct have been described previously.[17]

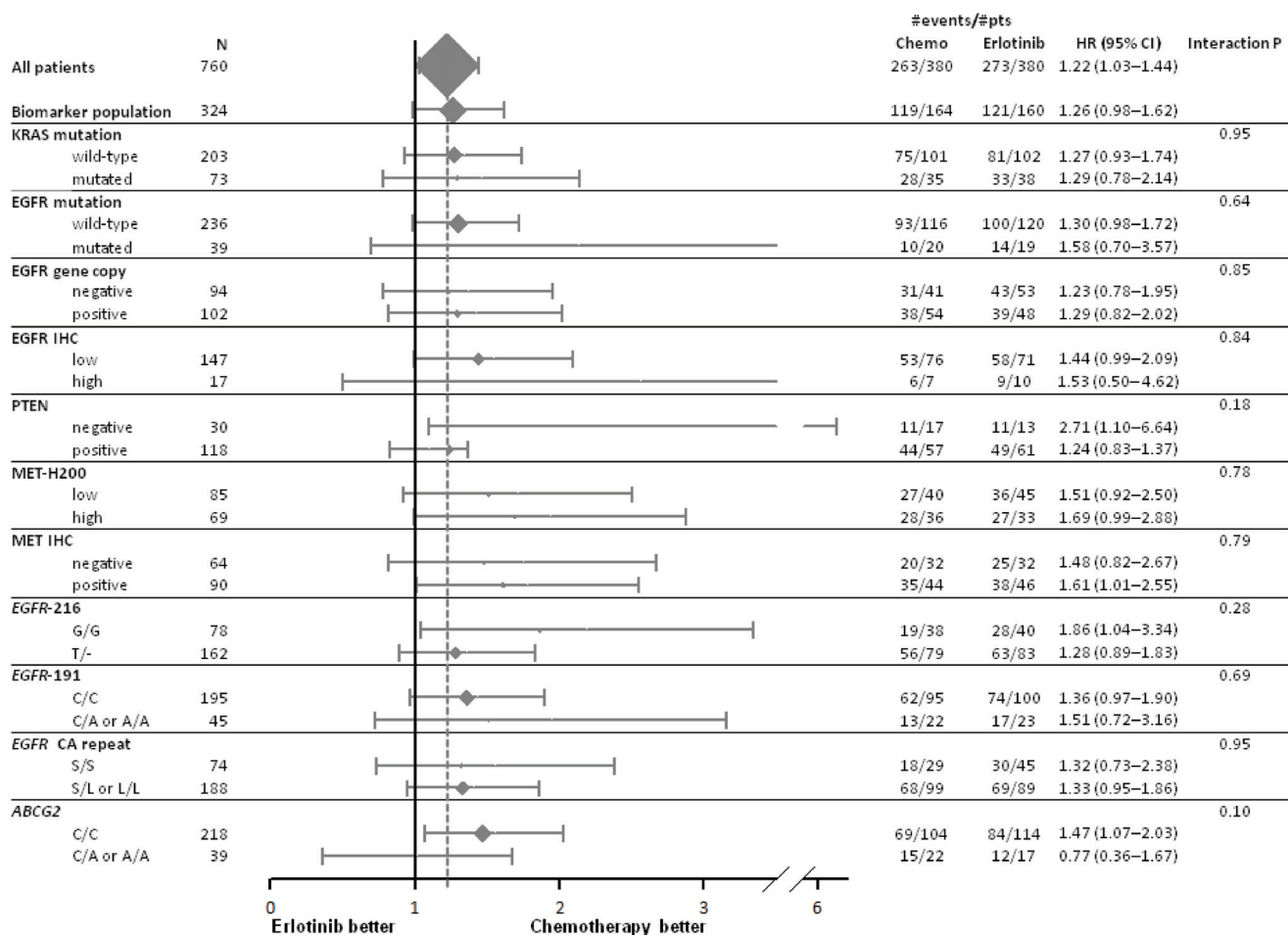


Figure 2: Forest plot of overall survival by treatment arm and biomarkers. Hazard ratio (HR) < 1 means a lower risk of death for patients treated with first-line erlotinib.

Formalin fixed paraffin embedded blocks or unstained sections of tumor tissue were collected. Because of limited tissue materials, biomarker analyses were performed in the following priority order: *EGFR* mutation status, *KRAS* mutation, *EGFR* gene copy number (GCN) by fluorescent in situ hybridization (FISH), *EGFR*, *cMET*, *HER2*, *HER3* and *PTEN* protein expression by immunohistochemistry. The remaining material was used for genotyping of *EGFR* and *ABCG2* polymorphisms (when no blood sample or tissue block of normal tissue was available). No prioritization was required for blood sample derived DNA.

All biomarker assays were performed at the Applied Molecular Profiling Laboratory at the Princess Margaret Cancer Centre. All tissue analyses were preceded by a pathology review of the hematoxylin eosin (HE) stained slides to confirm the diagnosis, estimate the tumor cell abundance and mark the tumor areas for macrodissection or FISH scoring. The procedure of the *EGFR* mutation test and *EGFR/ABCG2* polymorphism analysis has been described previously.[15, 17, 25]

EGFR exon 19 deletion and exon 21 L858R mutations were analysed as previously reported.[17] *KRAS* codon 12 and 13 mutations were analysed using the capillary sequencing method, with positive or equivocal results confirmed by repeat sequencing. *EGFR* gene copy number was evaluated by fluorescence in situ hybridization; high and low copy number cases were categorized using the University of Colorado system, as reported previously.[25]

IHC staining was performed using the BenchMark XT autostainer (Ventana, Tucson, AZ). The antibodies, staining conditions and scoring cut-offs used are detailed in Supplementary Table S1. For each marker, the staining intensity (grades 0 to 3) and estimated percentage (%) of tumor cells at each intensity grade were recorded. The H-score was the sum of % stained tumor cells at each staining intensity. For *EGFR*, *HER2* and *HER3*, cases were classified as low or high expression, using H-score < 200 and ≥200, respectively. Two scoring systems were used for *cMET*: (1) MET-H200 scoring system using H-score < 200 and ≥200 as above; and (2) the MET

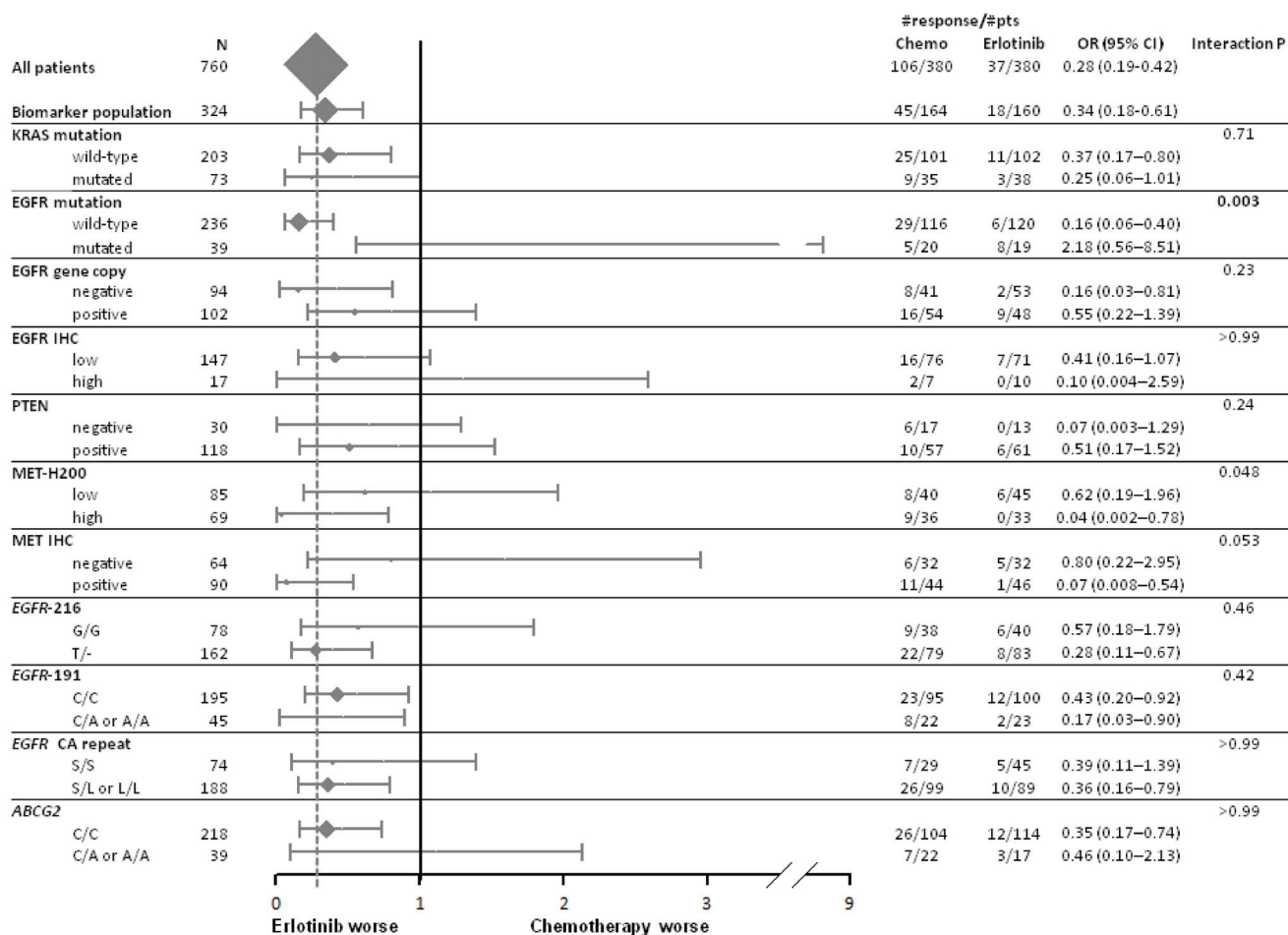


Figure 3: Forest plot of response by treatment arm and biomarkers. Odds ratio (OR) >1 means a higher probability of response for patients treated with first-line erlotinib.

Table 2: Prognostic role of biomarkers with no significant interaction with treatment

	Progression-free survival		Overall survival	
	Hazard ratio (95% CI)	P value	Hazard ratio (95% CI)	P value
EGFR gene copy				
High vs low	0.82 (0.61 – 1.10)	0.19	0.77 (0.56 – 1.06)	0.11
EGFR IHC				
High vs low	1.06 (0.64 – 1.77)	0.82	1.00 (0.58 – 1.72)	0.99
KRAS mutation				
Mutant vs wild type	1.23 (0.93 – 1.61)	0.14	1.13 (0.84 – 1.52)	0.42
PTEN				
Positive vs negative	0.99 (0.65 – 1.51)	0.95	1.13 (0.71 – 1.81)	0.61
MET-H200				
High vs low	1.39 (0.99 – 1.95)	0.055	1.42 (0.99 – 2.05)	0.059
MET-IHC				
Positive vs negative	1.50 (1.07 – 2.10)	0.02	1.46 (1.01 – 2.13)	0.047
EGFR SNP 216				
G/G vs T/-	0.78 (0.59 – 1.03)	0.082	0.67 (0.48 - 0.94)	0.019
EGFR SNP 191				
C/C vs A/-	1.13 (0.80 – 1.58)	0.49	1.19 (0.80 – 1.78)	0.38
ABCG2				
C/C vs A/-	1.10 (0.78 – 1.57)	0.58	1.10 (0.73 – 1.66)	0.66
EGFR CA repeat				
S/S vs L/-	0.94 (0.71 – 1.25)	0.67	0.89 (0.64 – 1.24)	0.48

IHC scoring system that was developed in a previous trial.[26] The latter score was assessed independently by two pathologists (LK and MST) and the final MET-IHC represents the mean of the two independent scores (Supplementary Figure S1). PTEN IHC was interpreted as negative when there was no staining at all.[27] All interpretation was performed without information on clinical outcome and assigned treatment strategy.

Blood samples were collected using a kit provided by the central laboratory with specific processing and shipment instructions. DNA was isolated using the Qiagen humanDNA kit. Polymorphism analyses for *EGFR* promoter (-216 G>T, rs712829 and -191 C>A rs712830), *EGFR* intron 1CA repeat polymorphisms and for the *ABCG2* +421 C>A (rs2231142) polymorphisms have been described previously.[15, 16] In brief, analyses were conducted using direct Sanger sequencing and Taqman polymerase chain reaction (PCR) reaction. For patients

without blood samples, analyses were conducted using DNA isolated from FFPE tumor samples used for mutation analyses, as a surrogate material. Our prior work has shown this region to be highly preserved when comparing germline to somatic material from lung cancer, with >90% agreement in paired blood-tumor tissue analyses.[15, 16]

The statistical analysis plan is detailed in the Supplementary materials on line. Several biomarkers were evaluated in confirmatory (*EGFR* mutation, *EGFR* gene copy, *EGFR* IHC, *KRAS* mutation, polymorphic variants of *EGFR* (SNP 216, SNP 191, CA repeat) and *ABCG2*) and exploratory (PTEN, MET.H200, MET IHC, HER2, HER3) analyses. Because of multiplicity of comparisons different significance levels were used according to a pre-defined step-down Holm-Bonferroni sequential testing procedure.

All efficacy analyses were based on intention-to-treat strategy. The primary end-point was progression-free

survival (PFS) to first treatment, while overall survival (OS) and response rate to first treatment (RR) were secondary end-points.

Both predictive and prognostic roles of biomarkers were evaluated using the appropriate multivariable models.

ACKNOWLEDGMENTS

M.Tsao is the M. Qasim Choksi Chair in Lung Cancer Translational Research at the Princess Margaret Cancer Centre/University of Toronto.

CONFLICTS OF INTEREST

M.Tsao and F.Perrone have received research funding from Roche. G.Liu, C.Butts, F.Ciardello, A.Morabito, F.Perrone and C.Gridelli have received honoraria from AstraZeneca, Boehringer Ingelheim and Roche. A. Rossi has received honoraria from AstraZeneca and Boehringer Ingelheim.

FUNDING

This work was supported by a research grant from the Hoffmann-LaRoche. L.Kim and M.Saieg were supported by the Terry Fox Foundation Special Training Initiative in Health Research for clinician scientists in molecular Oncologic Pathology at CIHR (STP 53912).

Authors contribution

All the authors reviewed the manuscript and agreed to submit it. CG, CB, FC, RF, FP and CG represented the Steering Committee. LK, MS, DC, GL and MST produced laboratory data. MDM, CG, SS, GL, MST and FP performed analysis and interpreted data. CB, FC, RF, VG, MAB, YA, AR, NL, PM, AM, CG enrolled and treated patients and provided clinical data.

REFERENCES

1. Besse B, Adjei A, Baas P, Meldgaard P, Nicolson M, Paz-Ares L, Reck M, Smit EF, Syrigos K, Stahel R, Felip E, Peters S, Panel M, et al. 2nd ESMO Consensus Conference on Lung Cancer: non-small-cell lung cancer first-line/second and further lines of treatment in advanced disease. *Ann Oncol.* 2014; 25: 1475-84. doi: 10.1093/annonc/mdu123.
2. Mitsudomi T, Morita S, Yatabe Y, Negoro S, Okamoto I, Tsurutani J, Seto T, Satouchi M, Tada H, Hirashima T, Asami K, Katakami N, Takada M, et al. Gefitinib versus cisplatin plus docetaxel in patients with non-small-cell lung cancer harbouring mutations of the epidermal growth factor receptor (WJTOG3405): an open label, randomised phase 3 trial. *Lancet Oncol.* 2010; 11: 121-8. doi: 10.1016/S1470-2045(09)70364-X.
3. Mok TS, Wu YL, Thongprasert S, Yang CH, Chu DT, Saijo N, Sunpaweravong P, Han B, Margono B, Ichinose Y, Nishiwaki Y, Ohe Y, Yang JJ, et al. Gefitinib or carboplatin-paclitaxel in pulmonary adenocarcinoma. *N Engl J Med.* 2009; 361: 947-57. doi: 10.1056/NEJMoa0810699.
4. Rosell R, Carcereny E, Gervais R, Vergnenegre A, Massuti B, Felip E, Palmero R, Garcia-Gomez R, Pallares C, Sanchez JM, Porta R, Cobo M, Garrido P, et al. Erlotinib versus standard chemotherapy as first-line treatment for European patients with advanced EGFR mutation-positive non-small-cell lung cancer (EURTAC): a multicentre, open-label, randomised phase 3 trial. *Lancet Oncol.* 2012; 13: 239-46. doi: 10.1016/S1470-2045(11)70393-X.
5. Zhou C, Wu YL, Chen G, Feng J, Liu XQ, Wang C, Zhang S, Wang J, Zhou S, Ren S, Lu S, Zhang L, Hu C, et al. Erlotinib versus chemotherapy as first-line treatment for patients with advanced EGFR mutation-positive non-small-cell lung cancer (OPTIMAL, CTONG-0802): a multicentre, open-label, randomised, phase 3 study. *Lancet Oncol.* 2011; 12: 735-42. doi: 10.1016/S1470-2045(11)70184-X.
6. Shepherd FA, Rodrigues Pereira J, Ciuleanu T, Tan EH, Hirsh V, Thongprasert S, Campos D, Maoleekoonpiroj S, Smylie M, Martins R, van Kooten M, Dediu M, Findlay B, et al. Erlotinib in previously treated non-small-cell lung cancer. *N Engl J Med.* 2005; 353: 123-32. doi: 10.1056/NEJMoa050753.
7. Soria JC, Felip E, Cobo M, Lu S, Syrigos K, Lee KH, Goker E, Georgoulas V, Li W, Isla D, Guclu SZ, Morabito A, Min YJ, et al. Afatinib versus erlotinib as second-line treatment of patients with advanced squamous cell carcinoma of the lung (LUX-Lung 8): an open-label randomised controlled phase 3 trial. *Lancet Oncol.* 2015; 16: 897-907. doi: 10.1016/S1470-2045(15)00006-6.
8. Rosell R, Molina MA, Costa C, Simonetti S, Gimenez-Capitan A, Bertran-Alamillo J, Mayo C, Moran T, Mendez P, Cardenal F, Isla D, Provencio M, Cobo M, et al. Pretreatment EGFR T790M mutation and BRCA1 mRNA expression in erlotinib-treated advanced non-small-cell lung cancer patients with EGFR mutations. *Clin Cancer Res.* 2011; 17: 1160-8. doi: 10.1158/1078-0432.CCR-10-2158.
9. Yasuda H, Kobayashi S, Costa DB. EGFR exon 20 insertion mutations in non-small-cell lung cancer: preclinical data and clinical implications. *Lancet Oncol.* 2012; 13: e23-31. doi: 10.1016/S1470-2045(11)70129-2.
10. Riely GJ, Marks J, Pao W. KRAS mutations in non-small cell lung cancer. *Proc Am Thorac Soc.* 2009; 6: 201-5. doi: 10.1513/pats.200809-107LC.
11. Zer A, Ding K, Lee SM, Goss GD, Seymour L, Ellis PM, Hackshaw A, Bradbury PA, Han L, O'Callaghan CJ, Tsao MS, Shepherd FA. Pooled Analysis of the Prognostic and Predictive Value of KRAS Mutation Status and Mutation Subtype in Patients with Non-Small Cell Lung Cancer Treated with Epidermal Growth Factor Receptor Tyrosine

- Kinase Inhibitors. *J Thorac Oncol.* 2016; 11: 312-23. doi: 10.1016/j.jtho.2015.11.010.
12. Janmaat ML, Kruyt FA, Rodriguez JA, Giaccone G. Response to epidermal growth factor receptor inhibitors in non-small cell lung cancer cells: limited antiproliferative effects and absence of apoptosis associated with persistent activity of extracellular signal-regulated kinase or Akt kinase pathways. *Clin Cancer Res.* 2003; 9: 2316-26. doi:
 13. Sos ML, Koker M, Weir BA, Heynck S, Rabinovsky R, Zander T, Seeger JM, Weiss J, Fischer F, Frommolt P, Michel K, Peifer M, Mermel C, et al. PTEN loss contributes to erlotinib resistance in EGFR-mutant lung cancer by activation of Akt and EGFR. *Cancer Res.* 2009; 69: 3256-61. doi: 10.1158/0008-5472.CAN-08-4055.
 14. Amador ML, Oppenheimer D, Perea S, Maitra A, Cusatis G, Iacobuzio-Donahue C, Baker SD, Ashfaq R, Takimoto C, Forastiere A, Hidalgo M. An epidermal growth factor receptor intron 1 polymorphism mediates response to epidermal growth factor receptor inhibitors. *Cancer Res.* 2004; 64: 9139-43. doi: 10.1158/0008-5472.CAN-04-1036.
 15. Liu G, Cheng D, Ding K, Le Maitre A, Liu N, Patel D, Chen Z, Seymour L, Shepherd FA, Tsao MS. Pharmacogenetic analysis of BR.21, a placebo-controlled randomized phase III clinical trial of erlotinib in advanced non-small cell lung cancer. *J Thorac Oncol.* 2012; 7: 316-22. doi: 10.1097/JTO.0b013e31824166c1.
 16. Liu G, Gurubhagavatula S, Zhou W, Wang Z, Yeap BY, Asomaning K, Su L, Heist R, Lynch TJ, Christiani DC. Epidermal growth factor receptor polymorphisms and clinical outcomes in non-small-cell lung cancer patients treated with gefitinib. *Pharmacogenomics J.* 2008; 8: 129-38. doi: 10.1038/sj.tpj.6500444.
 17. Gridelli C, Ciardiello F, Gallo C, Feld R, Butts C, Gebbia V, Maione P, Morgillo F, Genestreti G, Favaretto A, Leigh N, Wierzbicki R, Cinieri S, et al. First-line erlotinib followed by second-line cisplatin-gemcitabine chemotherapy in advanced non-small-cell lung cancer: the TORCH randomized trial. *J Clin Oncol.* 2012; 30: 3002-11. doi: 10.1200/JCO.2011.41.2056.
 18. Ohashi K, Maruvka YE, Michor F, Pao W. Epidermal growth factor receptor tyrosine kinase inhibitor-resistant disease. *J Clin Oncol.* 2013; 31: 1070-80. doi: 10.1200/JCO.2012.43.3912.
 19. Stewart EL, Tan SZ, Liu G, Tsao MS. Known and putative mechanisms of resistance to EGFR targeted therapies in NSCLC patients with EGFR mutations-a review. *Transl Lung Cancer Res.* 2015; 4: 67-81. doi: 10.3978/j.issn.2218-6751.2014.11.06.
 20. Douillard JY, Shepherd FA, Hirsh V, Mok T, Socinski MA, Gervais R, Liao ML, Bischoff H, Reck M, Sellers MV, Watkins CL, Speake G, Armour AA, et al. Molecular predictors of outcome with gefitinib and docetaxel in previously treated non-small-cell lung cancer: data from the randomized phase III INTEREST trial. *J Clin Oncol.* 2010; 28: 744-52. doi: 10.1200/JCO.2009.24.3030.
 21. Hirsch FR, Varella-Garcia M, Bunn PA Jr, Franklin WA, Dziadziuszko R, Thatcher N, Chang A, Parikh P, Pereira JR, Ciuleanu T, von Pawel J, Watkins C, Flannery A, et al. Molecular predictors of outcome with gefitinib in a phase III placebo-controlled study in advanced non-small-cell lung cancer. *J Clin Oncol.* 2006; 24: 5034-42. doi: 10.1200/JCO.2006.06.3958.
 22. Tsao MS, Sakurada A, Cutz JC, Zhu CQ, Kamel-Reid S, Squire J, Lorimer I, Zhang T, Liu N, Daneshmand M, Marrano P, da Cunha Santos G, Lagarde A, et al. Erlotinib in lung cancer - molecular and clinical predictors of outcome. *N Engl J Med.* 2005; 353: 133-44. doi: 10.1056/NEJMoa050736.
 23. Fukuoka M, Wu YL, Thongprasert S, Sunpaweravong P, Leong SS, Sriuranpong V, Chao TY, Nakagawa K, Chu DT, Saijo N, Duffield EL, Rukazenzov Y, Speake G, et al. Biomarker analyses and final overall survival results from a phase III, randomized, open-label, first-line study of gefitinib versus carboplatin/paclitaxel in clinically selected patients with advanced non-small-cell lung cancer in Asia (IPASS). *J Clin Oncol.* 2011; 29: 2866-74. doi: 10.1200/JCO.2010.33.4235.
 24. Rudin CM, Liu W, Desai A, Karrison T, Jiang X, Janisch L, Das S, Ramirez J, Poonkuzhali B, Schuetz E, Fackenthal DL, Chen P, Armstrong DK, et al. Pharmacogenomic and pharmacokinetic determinants of erlotinib toxicity. *J Clin Oncol.* 2008; 26: 1119-27. doi: 10.1200/JCO.2007.13.1128.
 25. Zhu CQ, da Cunha Santos G, Ding K, Sakurada A, Cutz JC, Liu N, Zhang T, Marrano P, Whitehead M, Squire JA, Kamel-Reid S, Seymour L, Shepherd FA, et al. Role of KRAS and EGFR as biomarkers of response to erlotinib in National Cancer Institute of Canada Clinical Trials Group Study BR.21. *J Clin Oncol.* 2008; 26: 4268-75. doi: 10.1200/JCO.2007.14.8924.
 26. Koeppen H, Yu W, Zha J, Pandita A, Penuel E, Rangell L, Raja R, Mohan S, Patel R, Desai R, Fu L, Do A, Parab V, et al. Biomarker analyses from a placebo-controlled phase II study evaluating erlotinib[±]-onartuzumab in advanced non-small cell lung cancer: MET expression levels are predictive of patient benefit. *Clin Cancer Res.* 2014; 20: 4488-98. doi: 10.1158/1078-0432.CCR-13-1836.
 27. Yanagawa N, Leduc C, Kohler D, Saieg MA, John T, Sykes J, Yoshimoto M, Pintilie M, Squire J, Shepherd FA, Tsao MS. Loss of phosphatase and tensin homolog protein expression is an independent poor prognostic marker in lung adenocarcinoma. *J Thorac Oncol.* 2012; 7: 1513-21. doi: 10.1097/JTO.0b013e3182641d4f.